

TIM 2015 Components by type

Resistors

Designation	Value & Colours (3col/ 4 col)
R1, R4, R5, R6, R7, R9, R11, R14, R21, R22†, R27	10k Bn Bk Or/ Bn Bk Bk Red
R2, R3, R15, R16, R17†	1k Bn Bk Red / Bn Bk Bk Bn
R8	33k Or Or Or/ Or Or Bk Red
R10	4k7 Yel Vi Red / Yel Vi Bk Bn
R12	2k7 Red Vi Red / Red Vi Bk Bn
R13	10k (103) preset (LCD contrast)
R18†	1k5 Bn Gn Red / Bn Gn Bk Bn
R19, R23†, R24	47k Yel Vi Or/ Yel Vi Bk Red
R20	50k (503) preset (Headphone vol)
R25	68R Blu Gy Bk/ Blu Gy Bk Gld
R26	47k Log pot & switch (Volume)

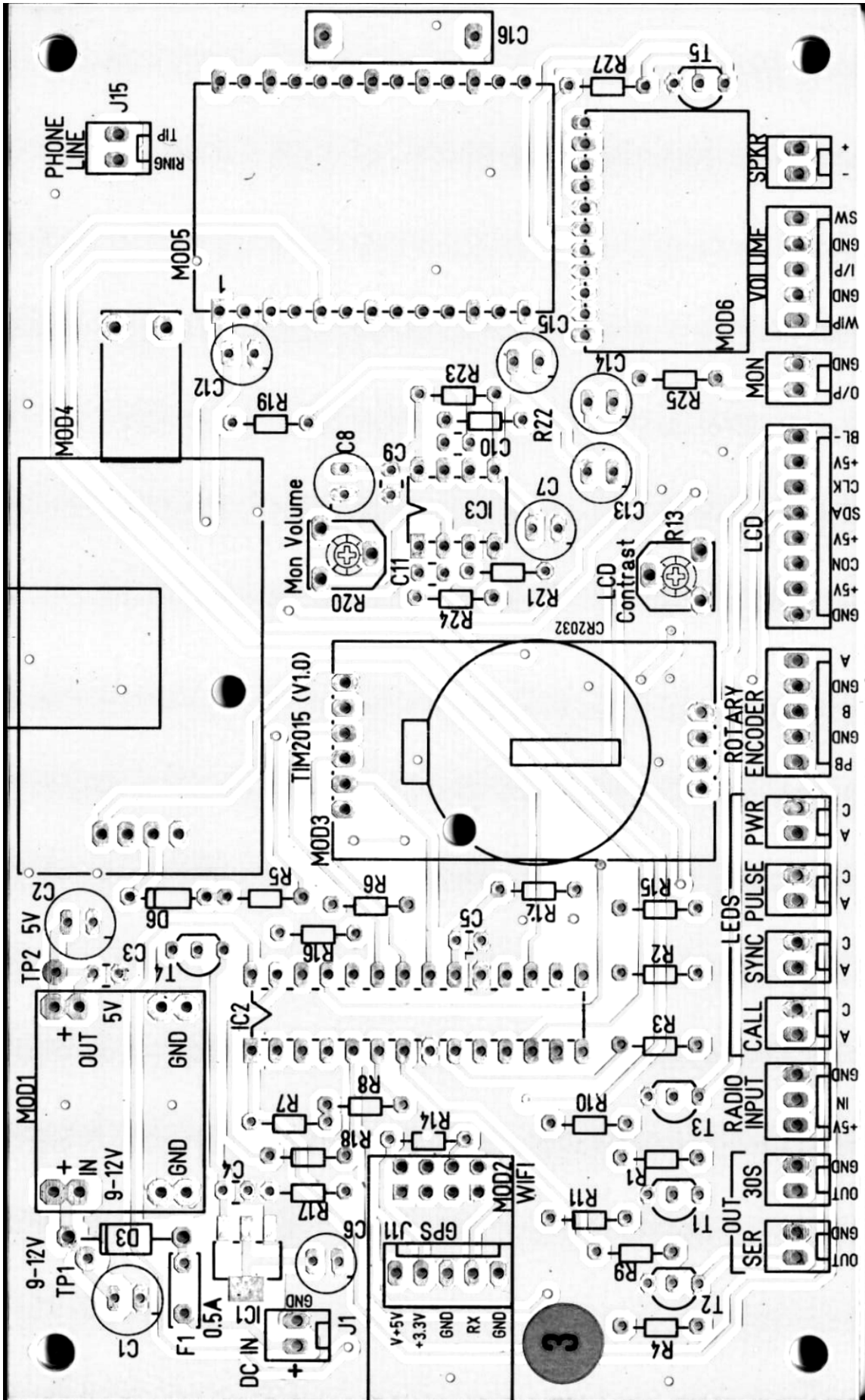
† (NB R17 & 18 and R22 & 23 & are transposed on the silk screening)

Capacitors

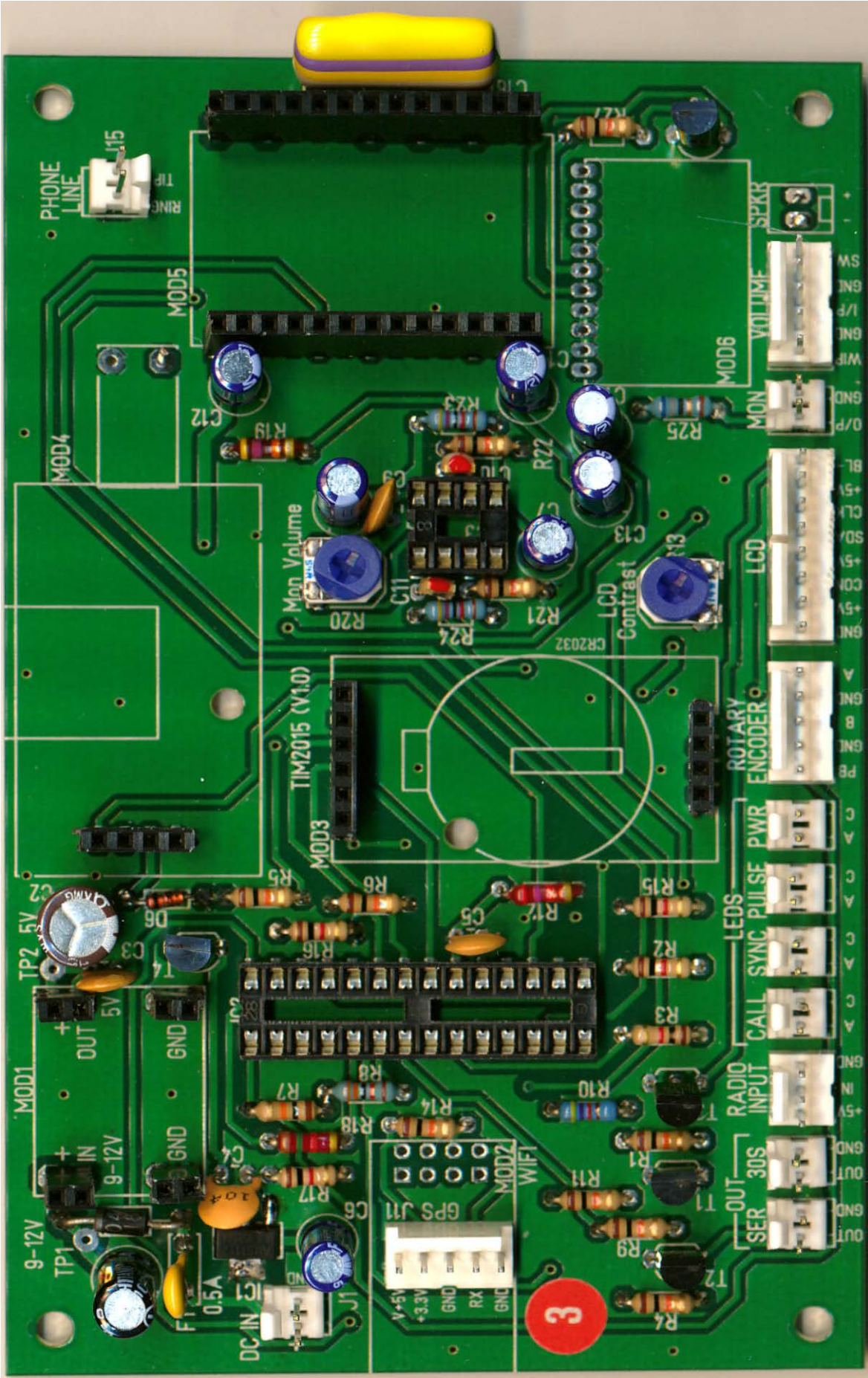
C1, C2	100µF 25V
C3, C4, C5, C9,	0.1µF (104) 50V
C6, C7, C8, C12, C13, C14, C15	10µF 25V
C10, C11	1nF (1000pF, 102) 50V
C16	0.47µF (474, Yel Vi Yel) 250V

Semiconductors

D1, D2, D4, D5	3mm LED Yell (Sync), Red (Call), Gn (Power), Blu (pulse)
D3	1N4004 1A 400V
D6	1N4148 150mA 75V Gen purpose
T1, T2, T3, T5	BC547B NPN
T4	BC327.25 PNP
IC1	LD1117-3.3 3.3V 800mA regulator
IC2	PIC18F25K22 microcontroller
IC3	MC33072PG Operational Amp



3



3