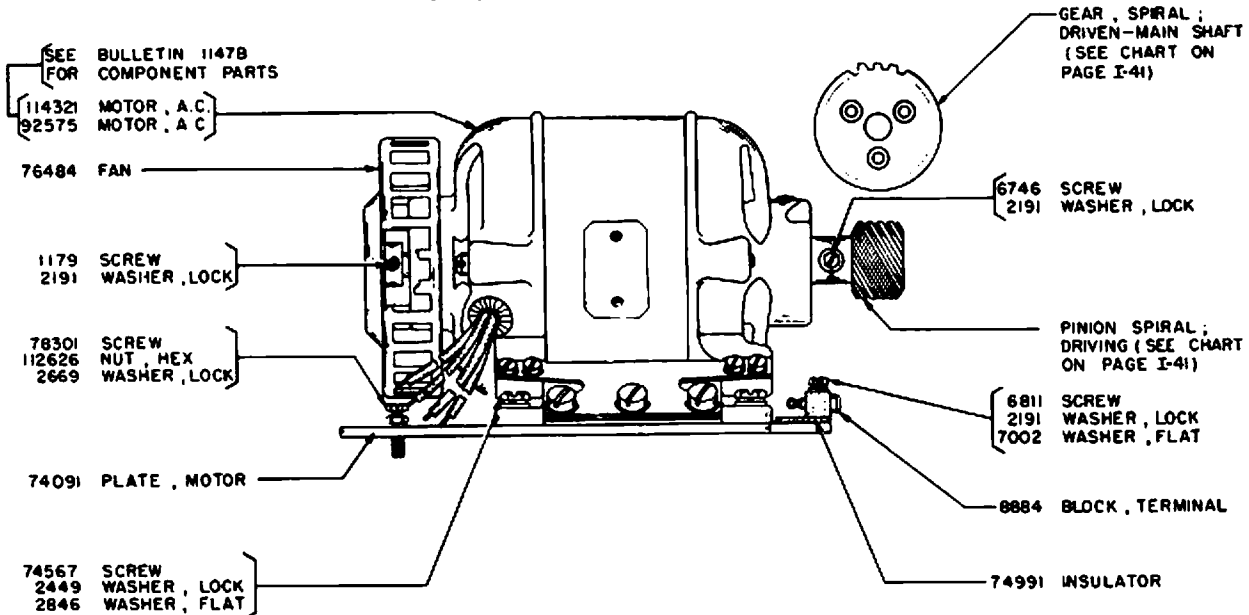
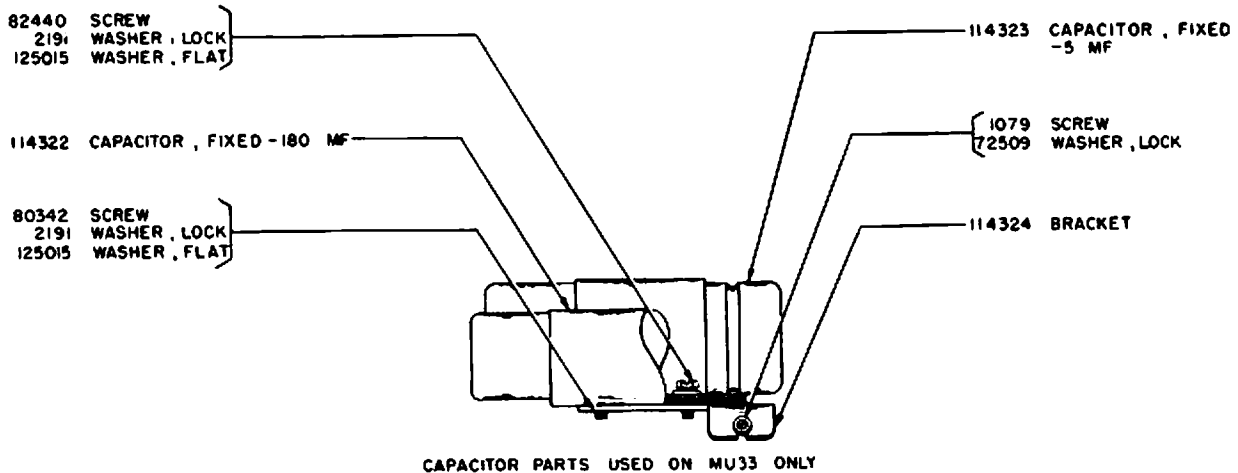


MU4 MOTOR UNIT ( BELL SYSTEM 150 ) - INCLUDES 82283 SYNCHRONOUS MOTOR, 60 CYCLE A. C.  
 MU7 MOTOR UNIT ( BELL SYSTEM 15M ) - INCLUDES 83799 SYNCHRONOUS MOTOR, 60 CYCLE A. C.  
 MUB MOTOR UNIT ( BELL SYSTEM 15E ) - INCLUDES 82714 SYNCHRONOUS MOTOR, 50 CYCLE A. C.

( PINION AND GEAR NOT INCLUDED WITH ABOVE MOTOR UNITS )

GEAR AND MOTOR PINION COMBINATIONS  
 USED WITH GOVERNED AND SYNCHRONOUS MOTORS

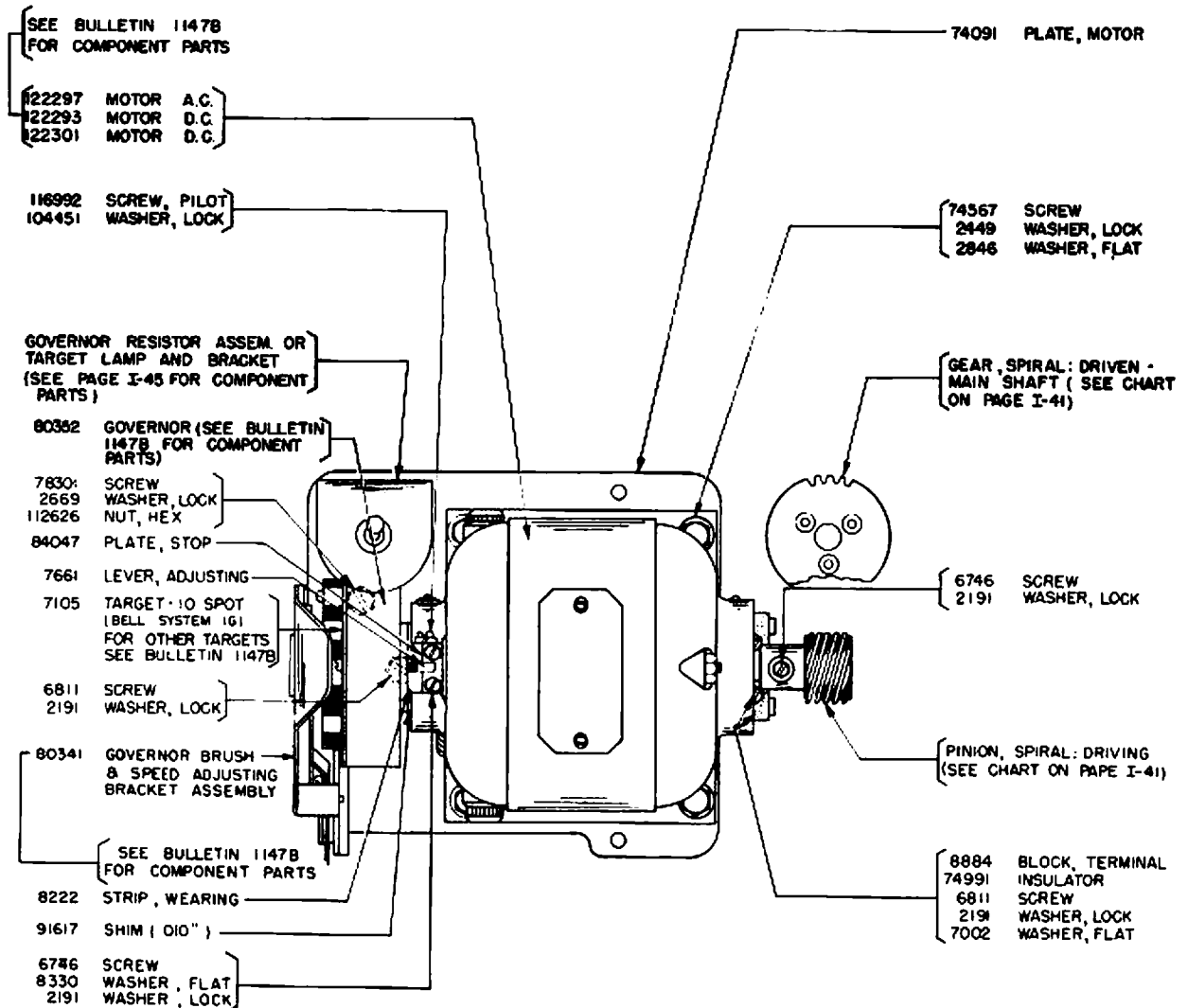
SET NUMBER	GEARS					OPERATIONS PER MINUTE	WORDS PER MINUTE	MOTOR DATA				TYPE OF MOTOR
	BELL CODE	MAIN PART NO.	GEAR TEETH	MOTOR PINION				TARGET		SPEED INDICATOR		
				PART NO.	TEETH			PART NO.	SPOTS	PART NO.	V. P. S.	
80437	15C	74913	30	74912	7	368	60	—	—	—	—	110V. 60 CYCLE - SYNCHRONOUS
96535	15G	91287	24	91286	7	460	75	—	—	—	—	
84042	15E	84019	25	84018	7	368	60	—	—	—	—	110V. 50 CYCLE - SYNCHRONOUS
107474	—	107460	20	107461	7	460	75	—	—	—	—	
84042	—	84019	25	84018	7	368	60	—	—	—	—	110V. 25 CYCLE - SYNCHRONOUS
107474	—	107460	20	107461	7	460	75	—	—	—	—	
80374	15A	74151	35	74505	7	368	60	7105	10	103628	87.6	110V. A. C. SERIES
96536	15H	84106	32	84105	8	460	75	7105	10	103628	87.6	
80374	—	74151	35	74505	7	368	60	7105	10	103628	87.6	110V. D. C. SHUNT
96536	—	84106	32	84105	8	460	75	7105	10	103628	87.6	
80374	—	74151	35	74505	7	368	60	7105	10	103628	87.6	220V. D. C. SHUNT
96536	—	84106	32	84105	8	460	75	7105	10	103628	87.6	



MU15 MOTOR UNIT (BELL SYSTEM 15L) INCLUDES 92575 SYNCHRONOUS MOTOR, 60 CYCLE A.C. (\*93854 SYNCHRONOUS MOTOR, 60 CYCLE A.C.)

MU33 MOTOR UNIT-INCLUDES 114321 SYNCHRONOUS MOTOR, 25 CYCLE A.C. (PINION AND GEAR NOT INCLUDED WITH ABOVE MOTOR UNITS)

\* SAME AS 92575 EXCEPT EQUIPPED WITH AN ADDITIONAL 89946 (BELL SYSTEM SERVICE) NAME PLATE AND 78025 NAME PLATE MOUNTING SCREWS

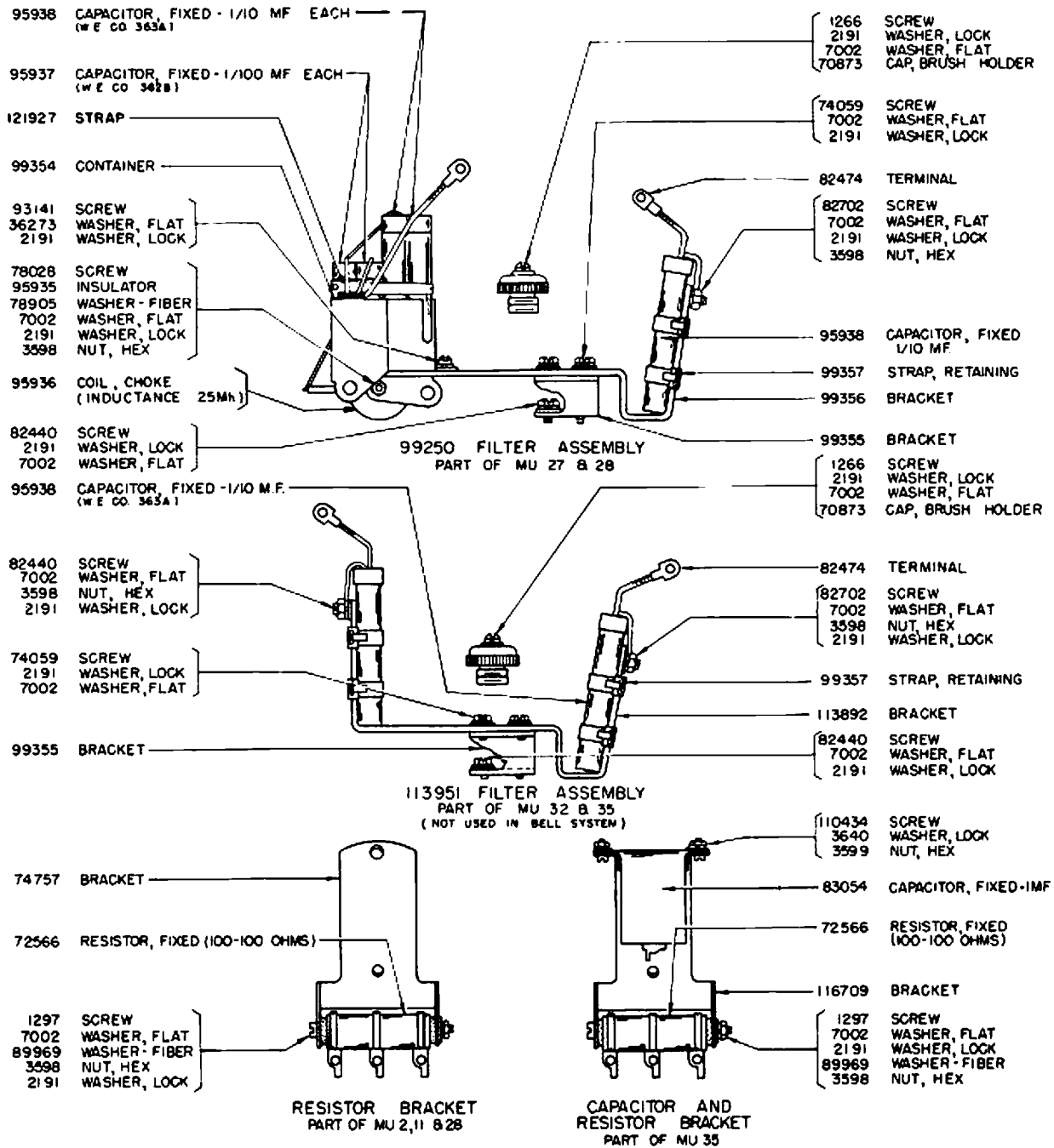


- (A) MUI MOTOR UNIT (BELL SYSTEM 15A) - INCLUDES 122297 GOVERNED MOTOR, 60 CYCLE A. C. SERIES  
 MU3 MOTOR UNIT (BELL SYSTEM 15C) - INCLUDES 122297 GOVERNED MOTOR, 60 CYCLE A. C. SERIES  
 MUI2 MOTOR UNIT (BELL SYSTEM 15J) - INCLUDES 122297 GOVERNED MOTOR, 60 CYCLE A. C. SERIES  
 MU27 MOTOR UNIT - INCLUDES 122297 GOVERNED MOTOR, 60 CYCLE A. C. SERIES  
 MU32 MOTOR UNIT - INCLUDES 122297 GOVERNED MOTOR, 60 CYCLE A. C. SERIES  
 MU2 MOTOR UNIT (BELL SYSTEM 15B) - INCLUDES 122293 GOVERNED, 110V. D. C. SHUNT  
 MUII MOTOR UNIT (BELL SYSTEM 15K) - INCLUDES 122293 GOVERNED, 110V. D. C. SHUNT  
 MU28 MOTOR UNIT INCLUDES 122293 GOVERNED MOTOR, 110V. D. C. SHUNT  
 MU35 MOTOR UNIT INCLUDES 122293 GOVERNED MOTOR, 110V. D. C. SHUNT  
 MU5 MOTOR UNIT INCLUDES 122301 GOVERNED MOTOR, 220V. D. C. SHUNT

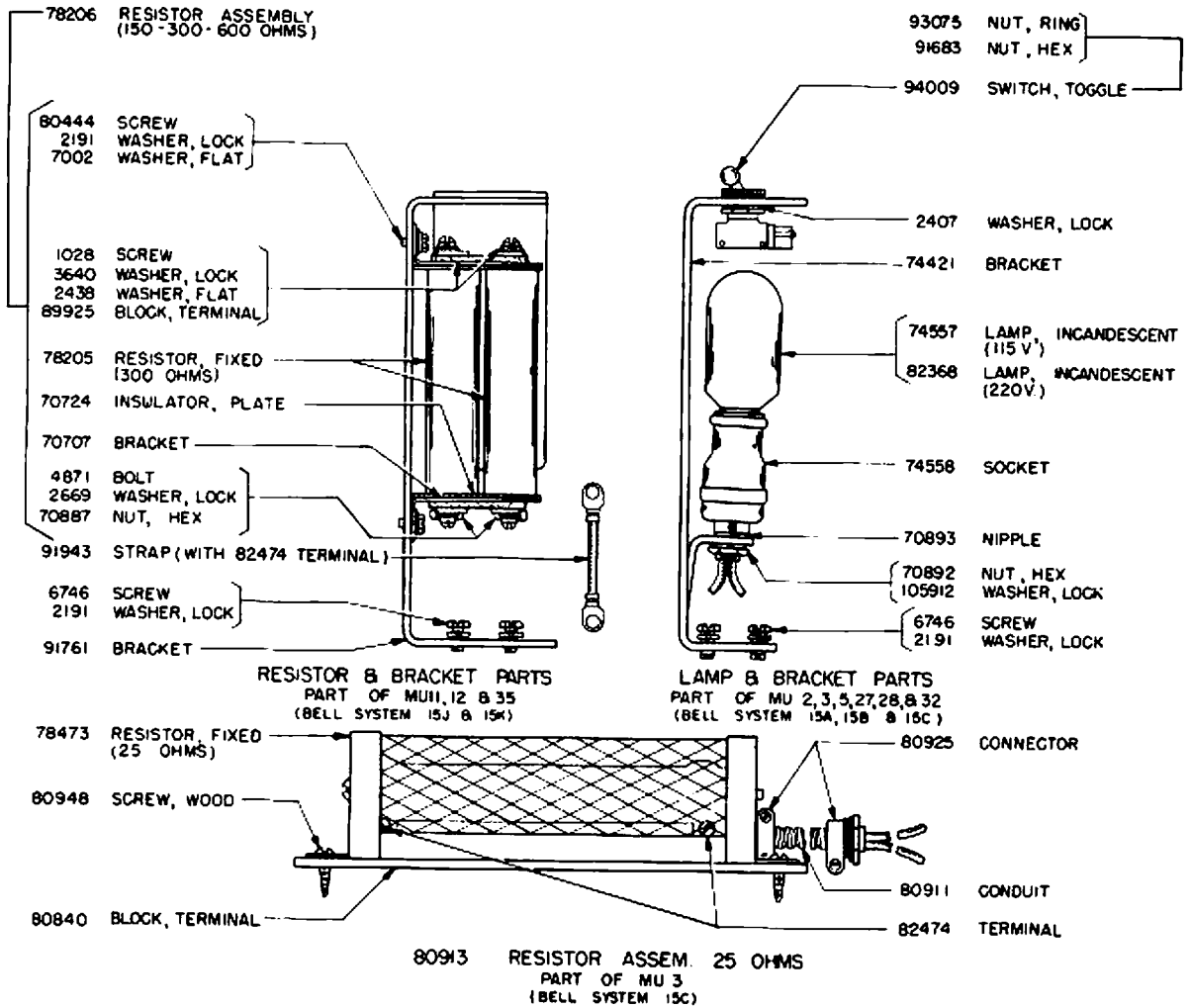
(PINION AND GEAR NOT INCLUDED WITH ABOVE MOTOR UNITS)

(SEE PAGES I-44 & I-45 FOR ACCESSORIES USED ON ABOVE MOTOR UNITS)

(A) SEE SEC. IV FOR EXPLANATION

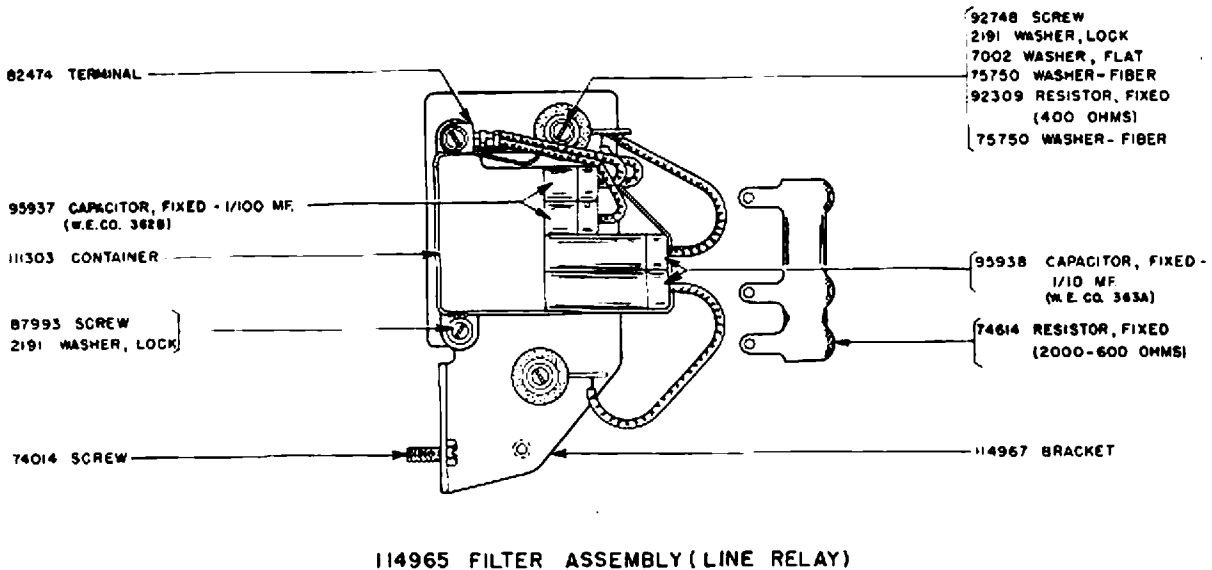
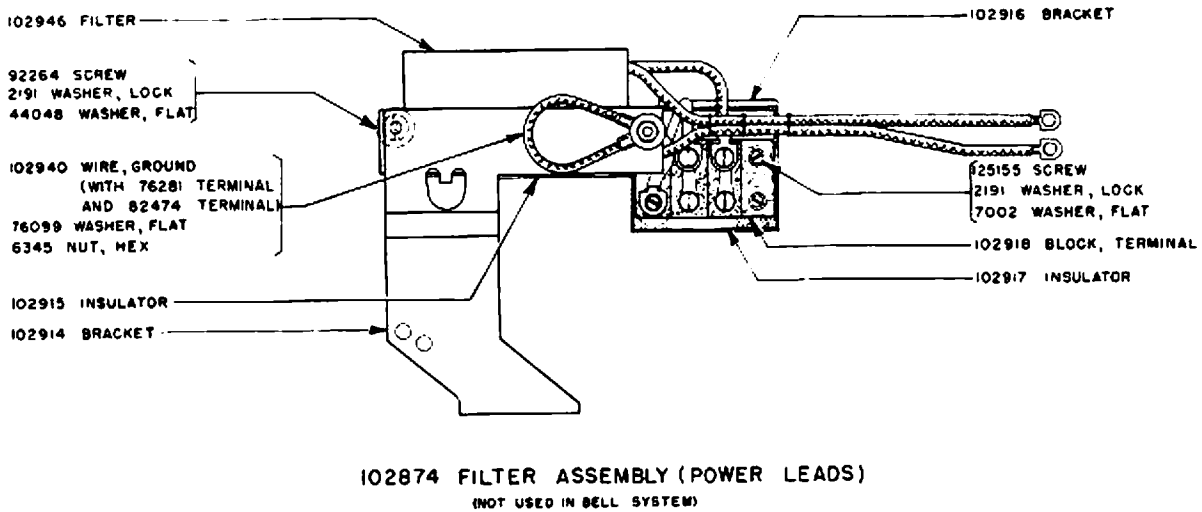
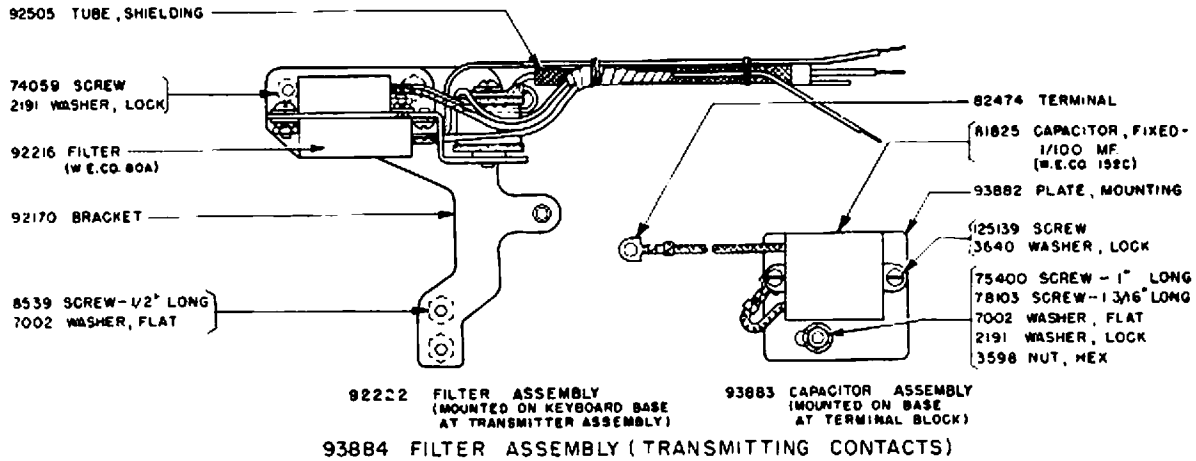


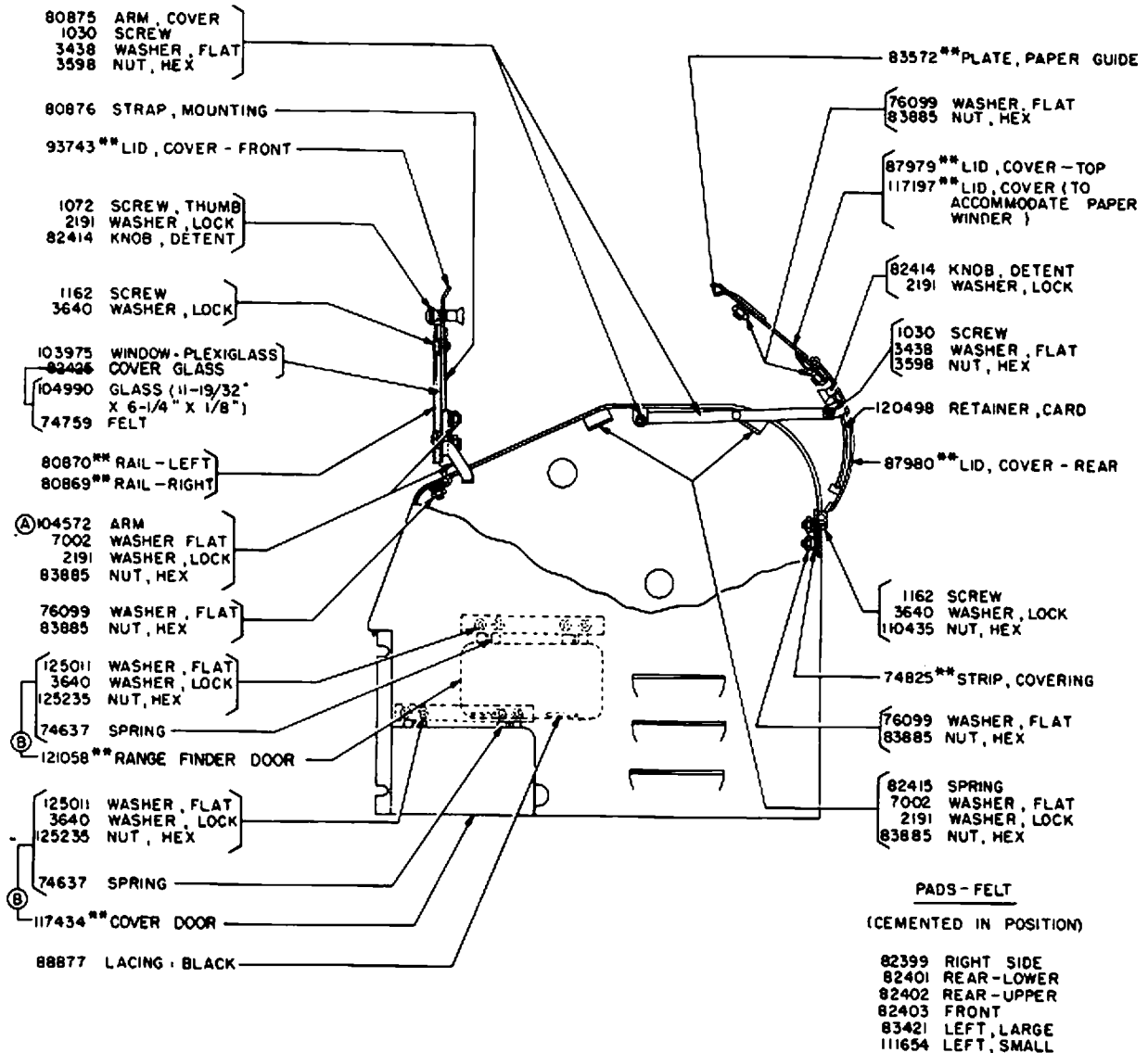
VARIABLE FEATURES OF MOTOR UNITS  
MU 2, 11, 27, 28, 32 & 35



CABLE ASSEMBLY CHART		
MOTOR UNIT USED ON	CABLE ASSEMBLY NO	WIRING DIAGRAM
MU 1 (BELL SYSTEM 15A)	74788	1277 WD
MU 2 (BELL SYSTEM 15B)	74571	1277 WD
MU 3 (BELL SYSTEM 15C)	74788	1297 WD
MU 4 (BELL SYSTEM 15D)	NONE	1297 WD
MU 5	74571	1297 WD
MU 7 (BELL SYSTEM 15M)	NONE	1221 WD
MU 8 (BELL SYSTEM 15E)	NONE	1277 WD
MU 11 (BELL SYSTEM 15K)	91763	1620 WD
MU 12 (BELL SYSTEM 15J)	91762	1620 WD
MU 15 (BELL SYSTEM 15L)	NONE	1277 WD
MU27	74788	2143 WD
MU28	74571	2143 WD
MU32	74788	2386 WD
MU33	NONE	1620 WD
MU35	11586	2422 WD

VARIABLE FEATURES OF MOTOR UNITS  
MU 1, 2, 3, 5, 11, 12, 27, 28, 32 & 35

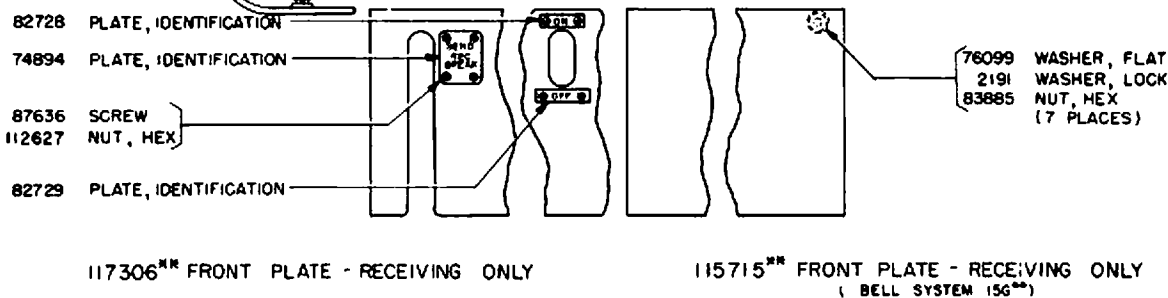
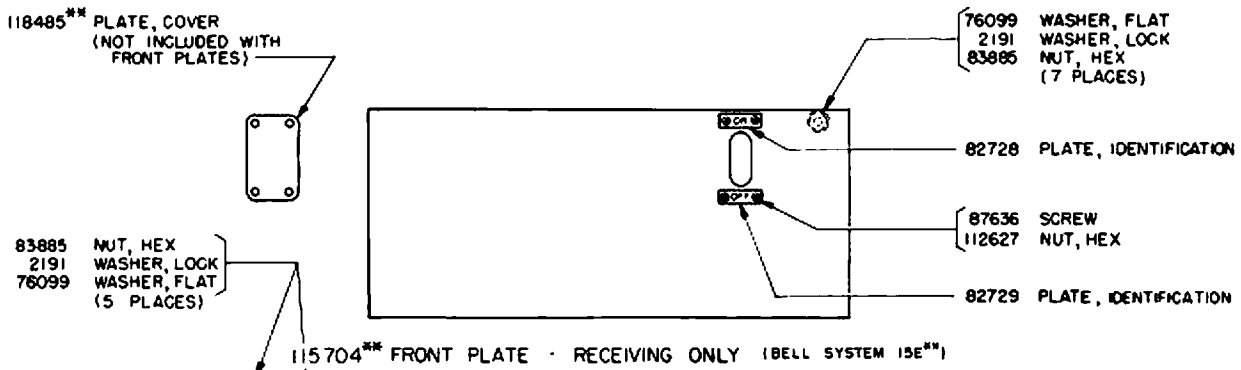
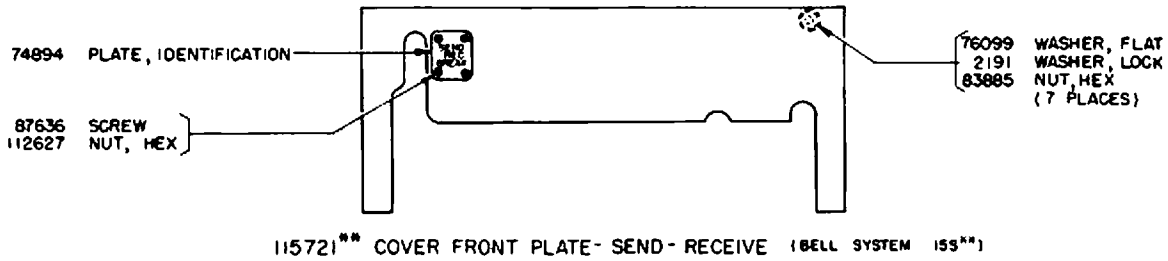
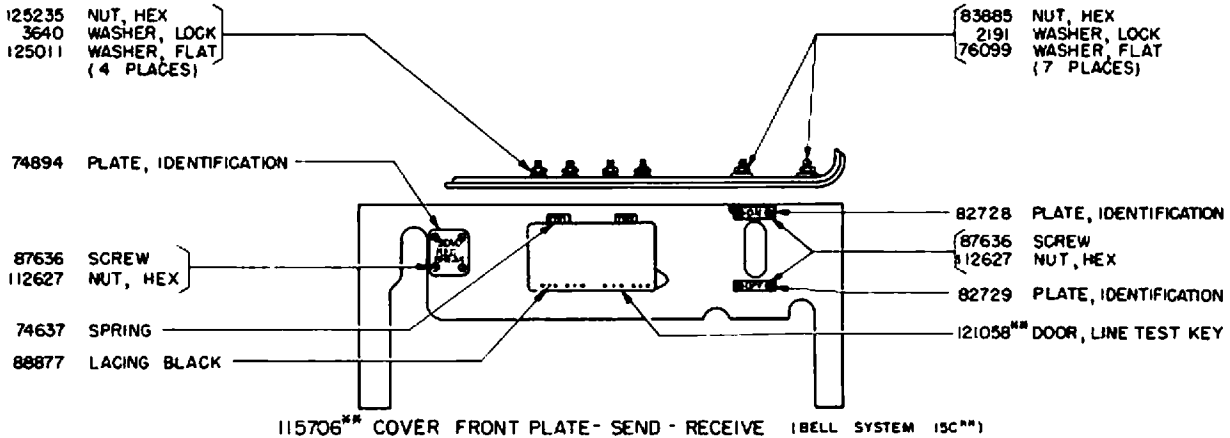




BPC200 \*\* COVER ASSEMBLY  
( BELL SYSTEM 15C \*\* )

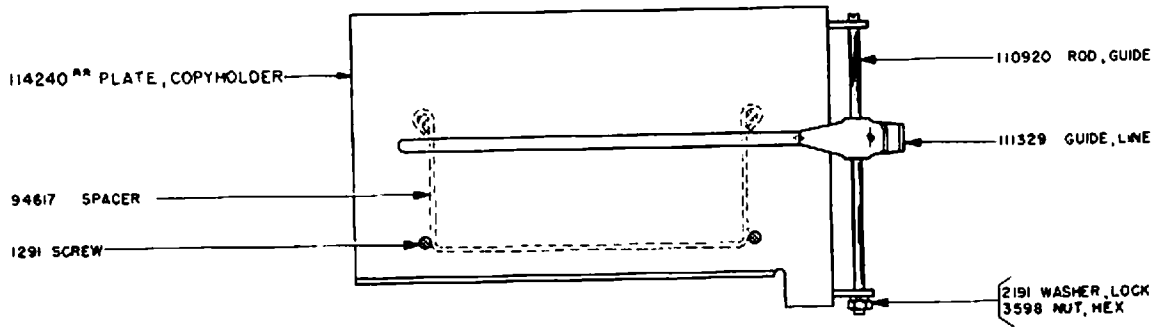
\*\* SEE SEC IX, PAGE 4 FOR EXPLANATION

(A) & (B) SEE SEC IX FOR EXPLANATION



\*\*SEE SEC. IX, PAGE 4 FOR EXPLANATION

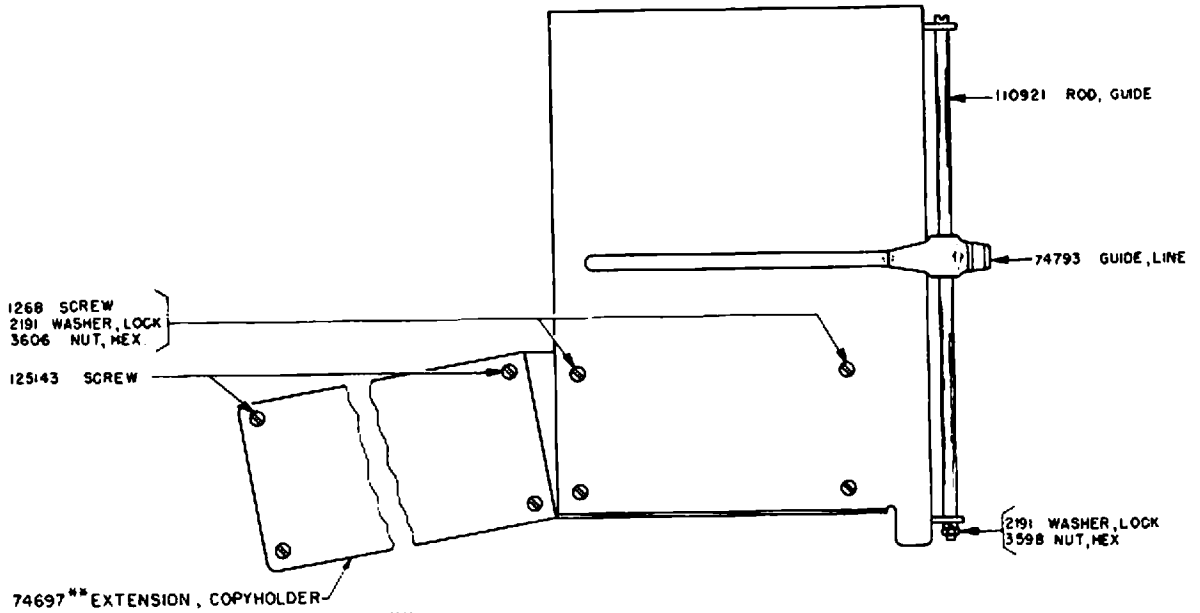




115700\*\* COPYHOLDER ASSEMBLY - 6" ( NEW STYLE )

( BELL SYSTEM 14A\*\* )

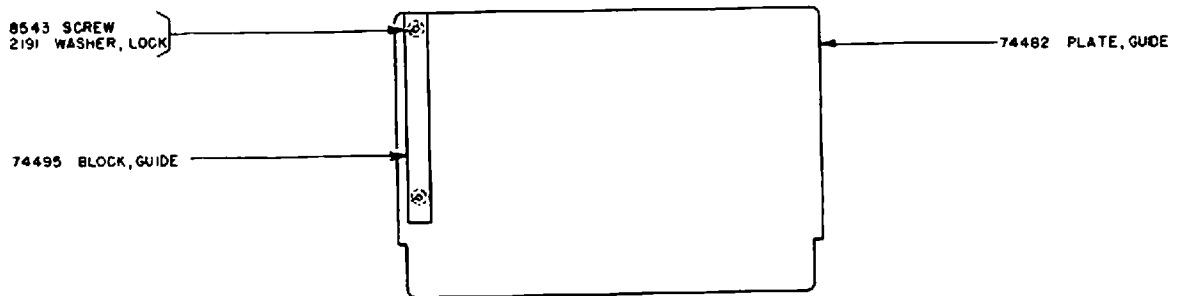
SEE SEC. III, PAGE 2 FOR OLD STYLE



115709\*\* COPYHOLDER ASSEMBLY - 12" (NEW STYLE )

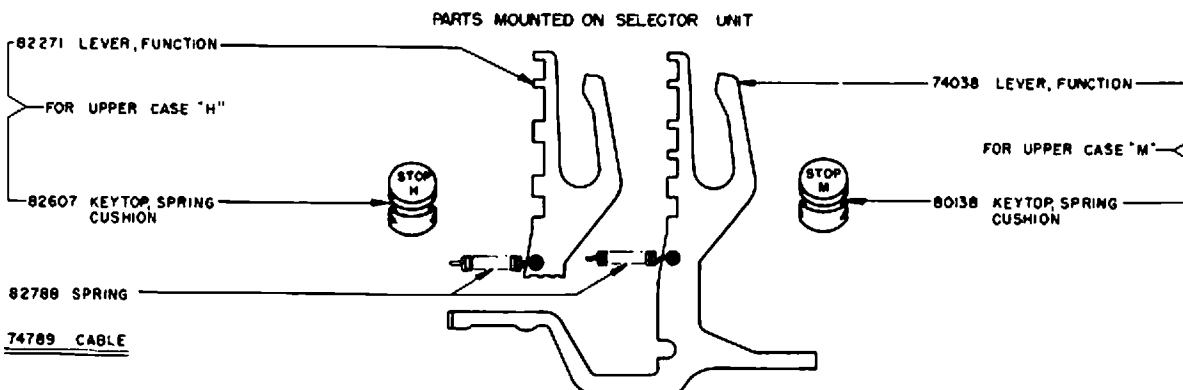
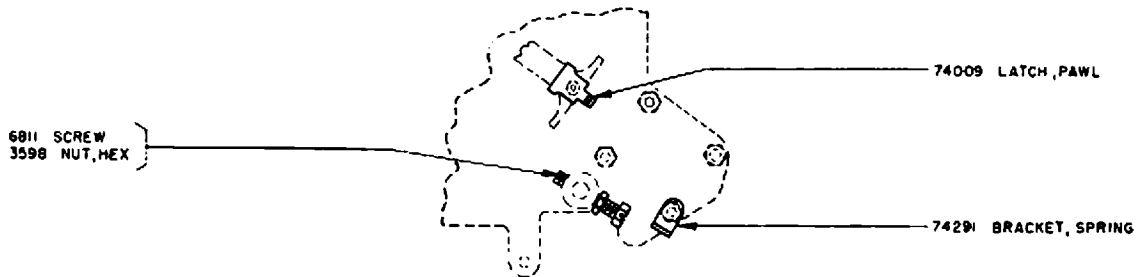
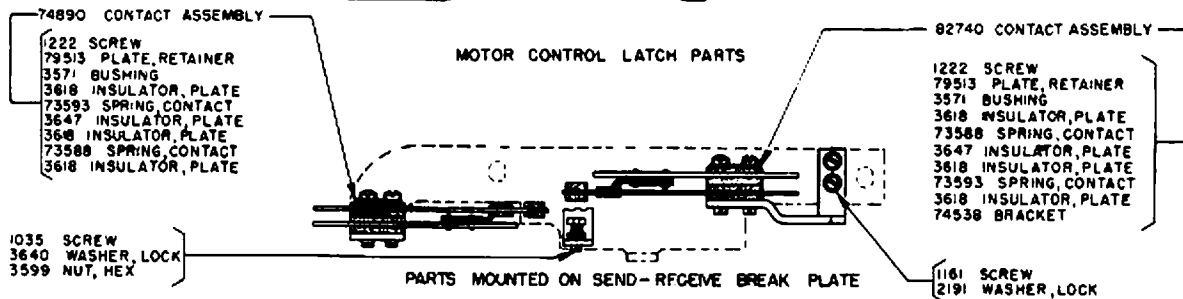
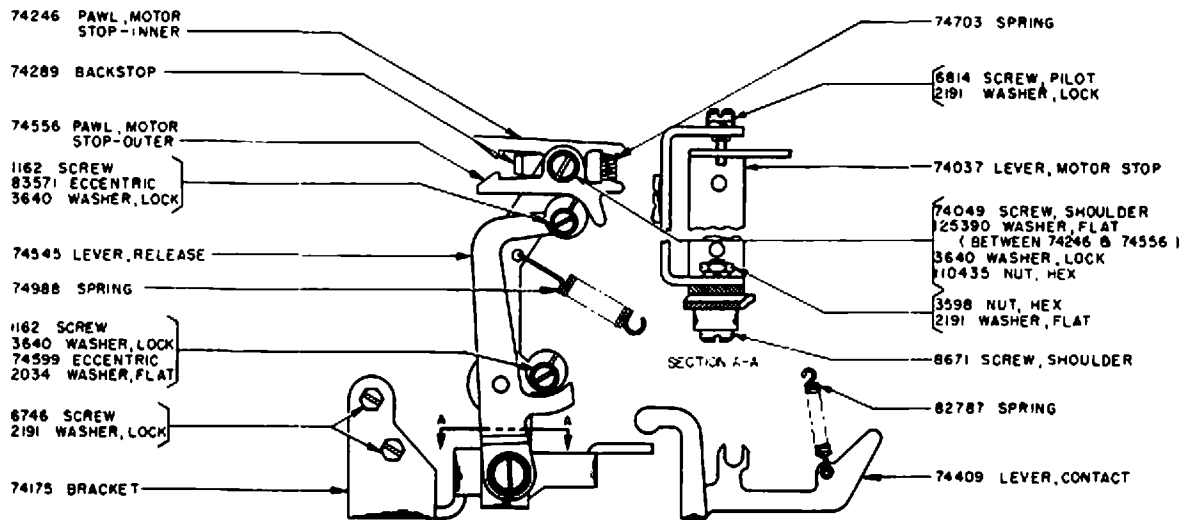
( BELL SYSTEM 15A\*\* )

SEE SEC. III, PAGE 2 FOR OLD STYLE



74624 BLANK GUIDE ASSEMBLY

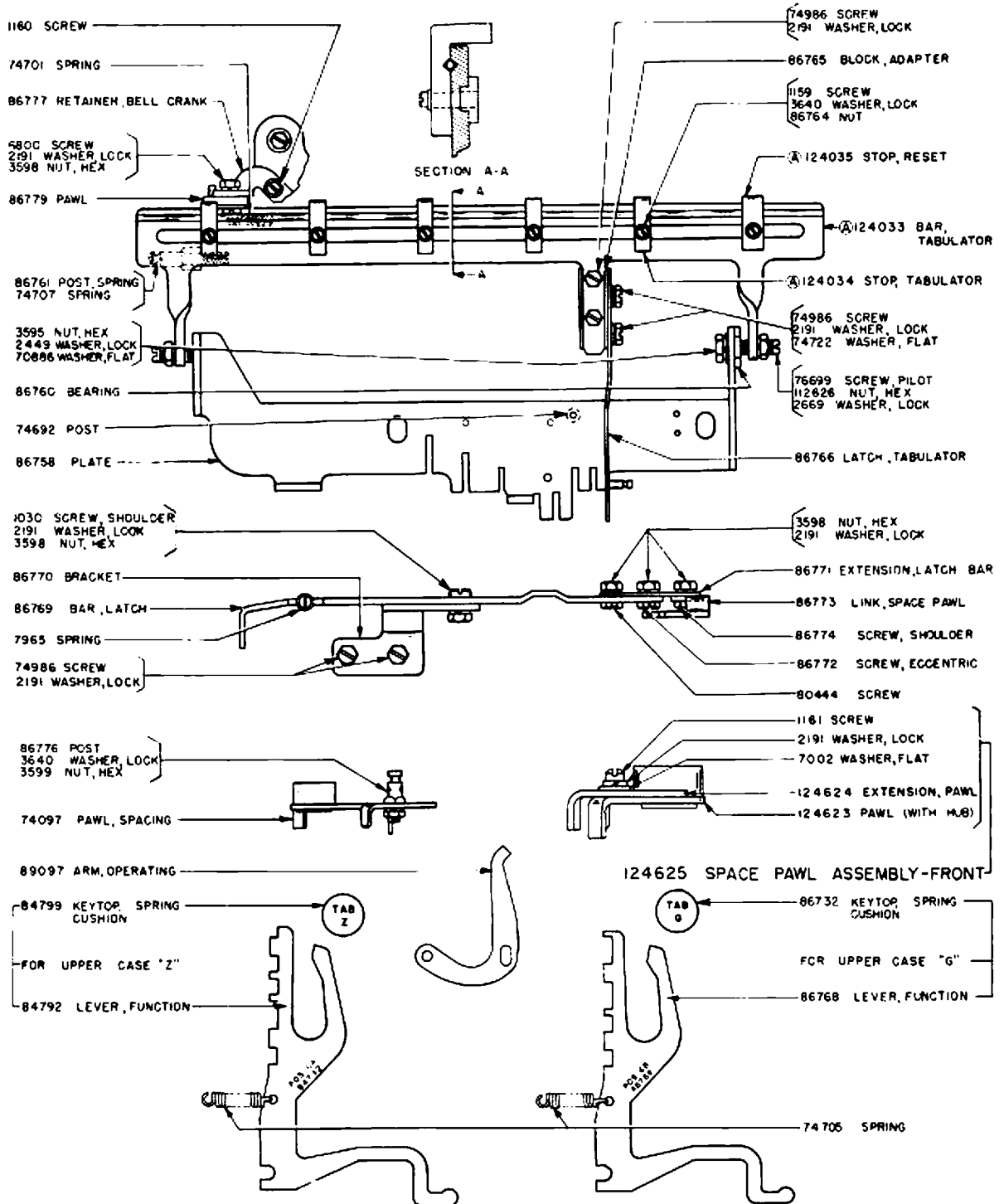
\*\* SEE SEC. III, PAGE 4 FOR EXPLANATION



SET OF PARTS FOR MECHANICAL MOTOR CONTROL

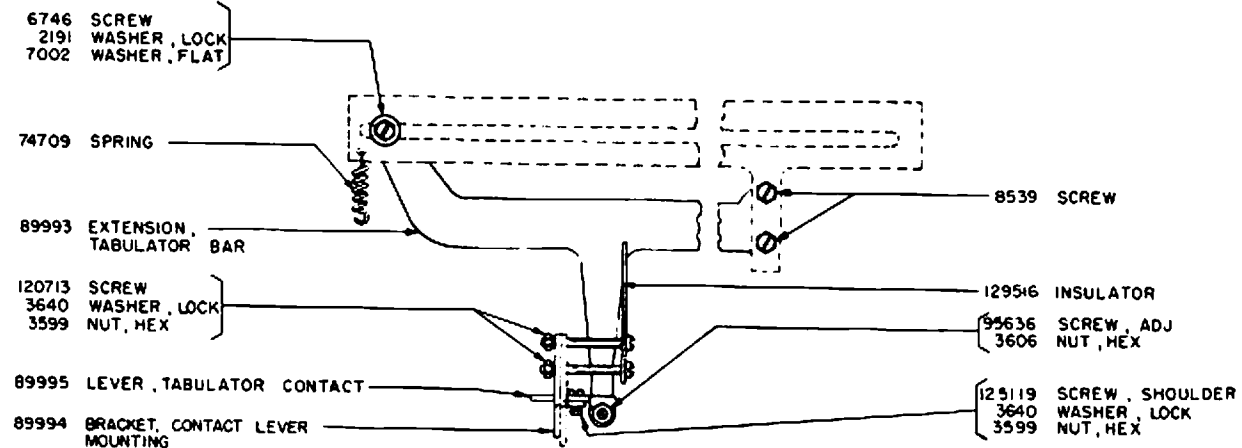
74764 FOR UPPER CASE "M"

82742 FOR UPPER CASE "H"

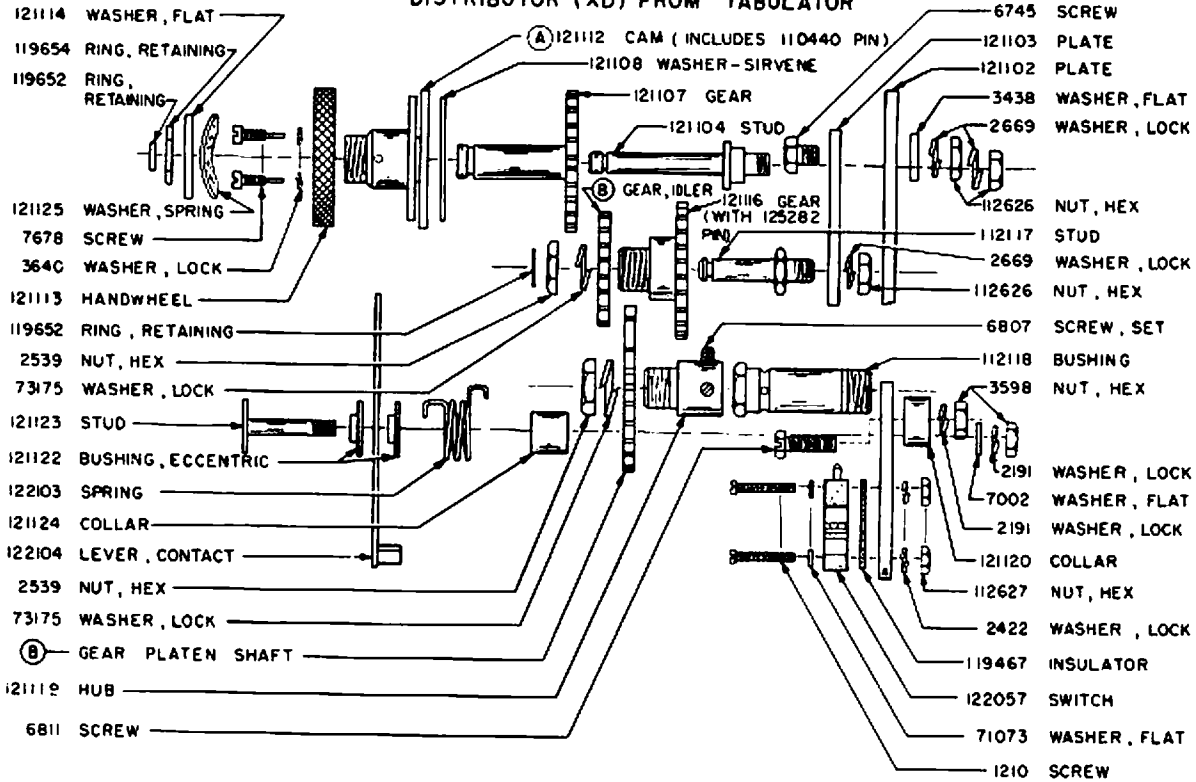


SET OF PARTS FOR HORIZONTAL TABULATOR  
 84925 FOR UPPER CASE "G"  
 87860 FOR UPPER CASE "Z"

(A) SEE SEC. IX FOR EXPLANATION



89992 SET OF PARTS TO CONTROL TRANSMITTER DISTRIBUTOR (XD) FROM TABULATOR

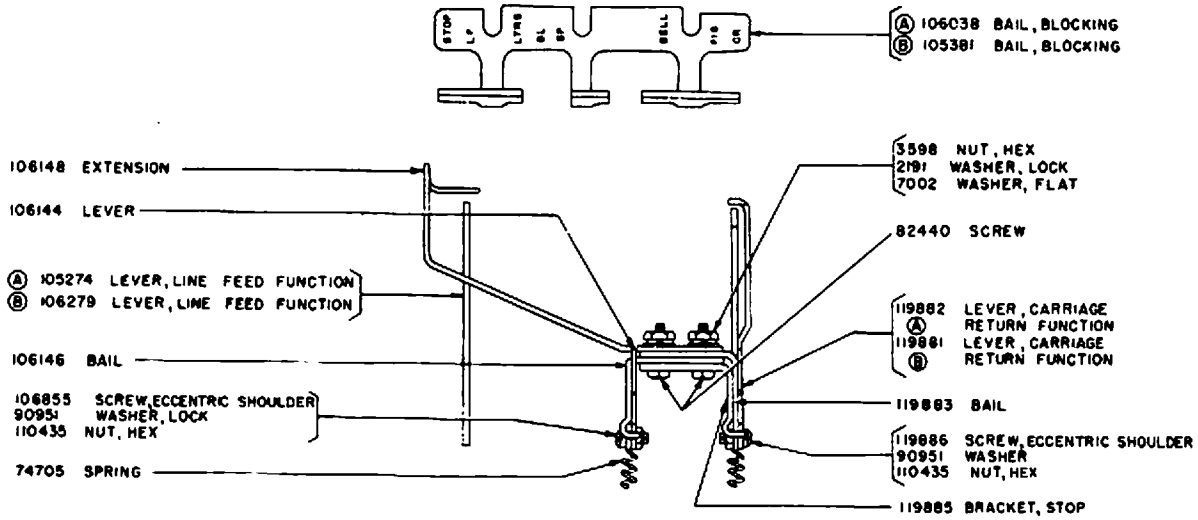


121130 SET OF PARTS TO PROVIDE PLATEN INDEXING FEATURE ON SPROCKET FEED PRINTER

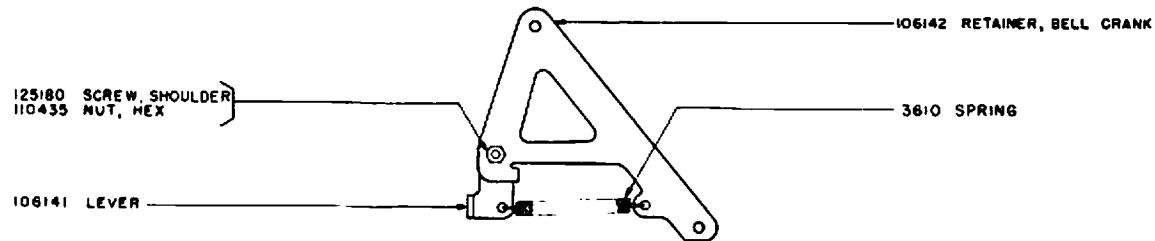
Ⓐ SEE SEC. IV FOR EXPLANATION

Ⓑ SETS OF GEARS AVAILABLE FOR VARIOUS LENGTHS OF FORMS ARE LISTED IN SECTION IV AND MUST BE ORDERED SEPARATELY.

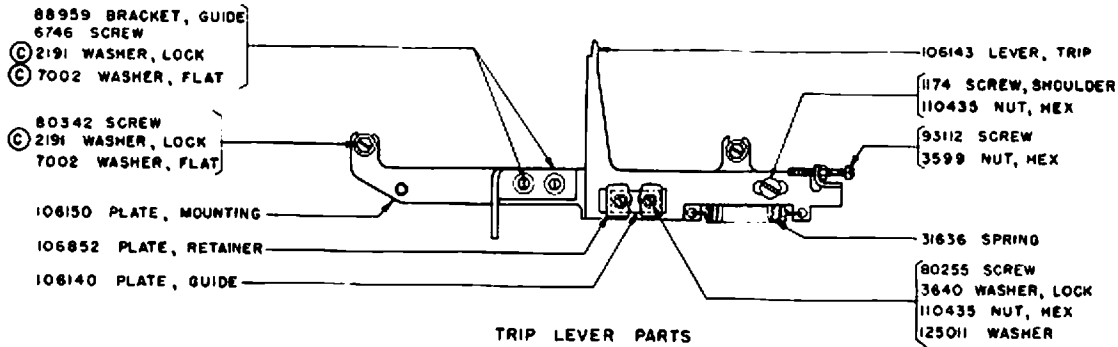




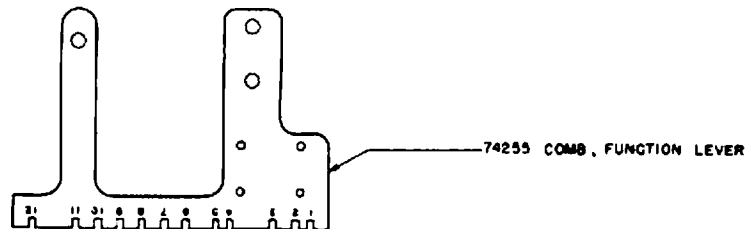
BAIL AND FUNCTION LEVER PARTS



BELL CRANK RETAINER PARTS

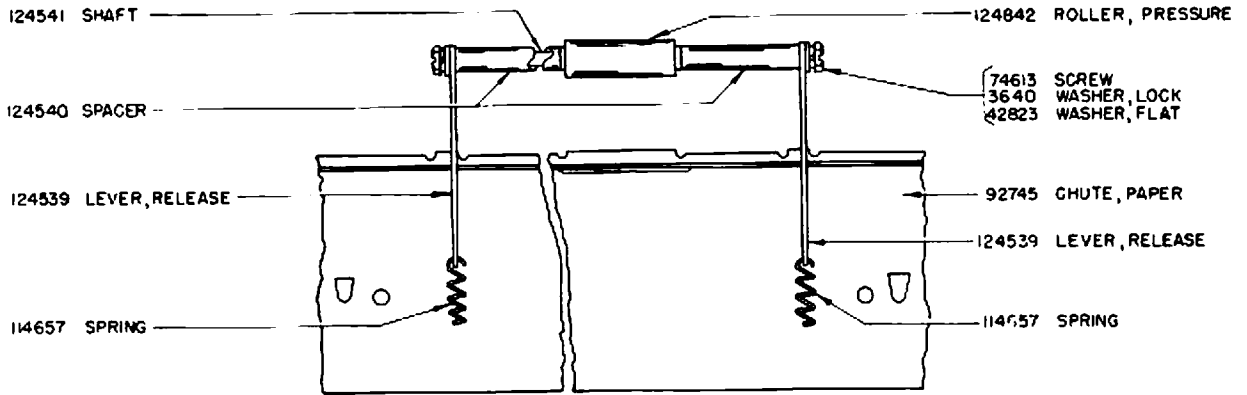


TRIP LEVER PARTS

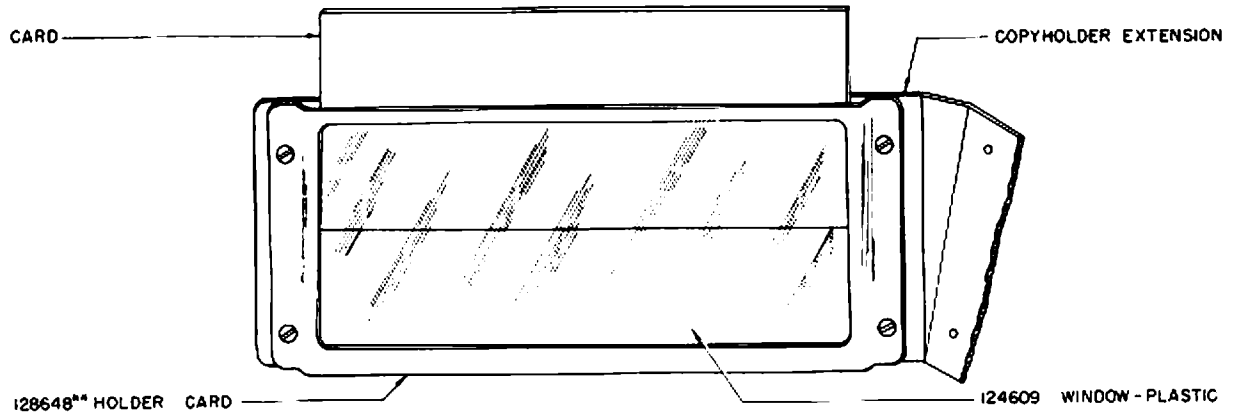


AUTOMATIC CARRIAGE RETURN AND LINE FEED PARTS

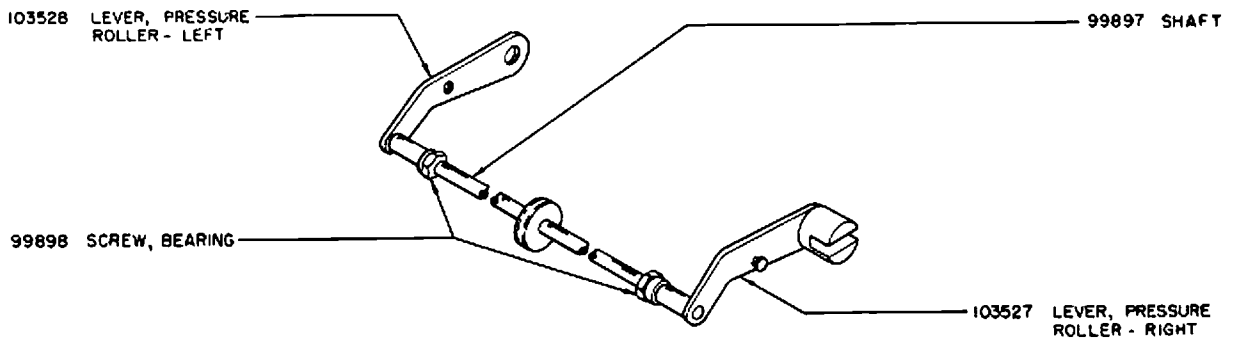
115751 SET OF PARTS FOR COMMUNICATION SERVICE  
 OPERATES IN LETTERS & FIGURES POSITIONS - EXCLUDES PARTS MARKED (B) & (C)  
 115752 SET OF PARTS FOR WEATHER SERVICE  
 OPERATES IN LETTERS POSITION ONLY - EXCLUDES PARTS MARKED (A) & (C)



(A) 115790 SET OF PARTS TO PROVIDE A SINGLE PRESSURE ROLLER ON THE PLATEN



124608\*\* SET OF PARTS FOR INSTRUCTION CARD HOLDER  
(ACCOMMODATES A CARD 3 1/2" WIDE BY 8 1/2" LONG)



113699 PAPER GUIDE ROLLER SHAFT ASSEMBLY

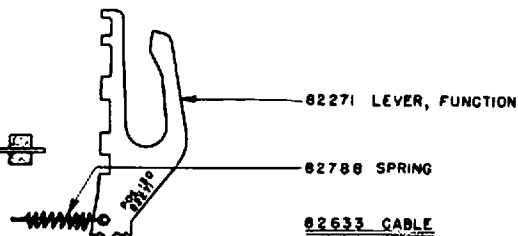
(REQUIRED FOR SPROCKET FEED PRINTERS EQUIPPED WITH TWO-COLOR PRINTING)

(A) SEE SEC III FOR EXPLANATION

\*\*SEE SEC. IV, PAGE 4 FOR EXPLANATION

81800 CONTACT ASSEMBLY

- 1210 SCREW
- 81299 BUSHING
- 79513 PLATE, RETAINER
- 3618 INSULATOR, PLATE
- 3647 INSULATOR, PLATE
- 73588 SPRING, CONTACT
- 73593 SPRING, CONTACT



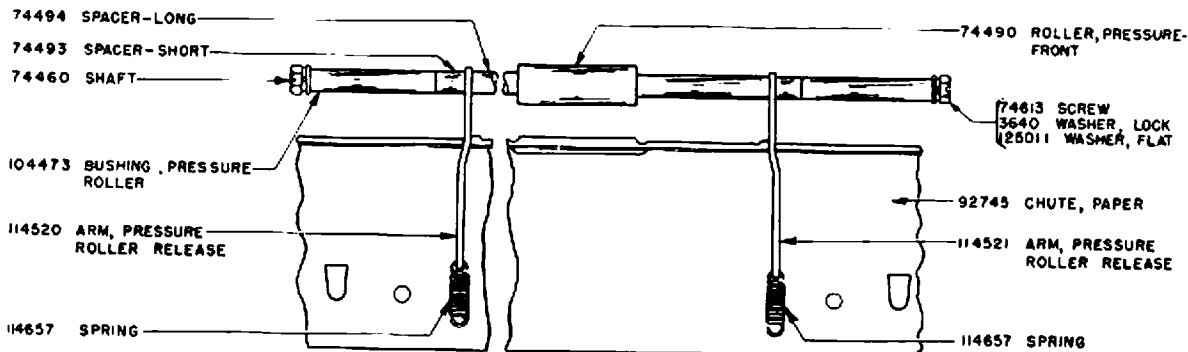
87868 SET OF PARTS FOR UPPER CASE 'H' CONTACT MECHANISM

- 6746 SCREW
- (B) 2191 WASHER, LOCK
- (B) 7002 WASHER, FLAT
- 88966 LEVER, BLOCKING
- 80342 SCREW
- 7002 WASHER, FLAT
- 125011 WASHER, FLAT
- 3640 WASHER, LOCK
- 3599 NUT, HEX
- 88962 PLATE, ADAPTER
- 88959 GUIDE, INTERMEDIATE LEVER

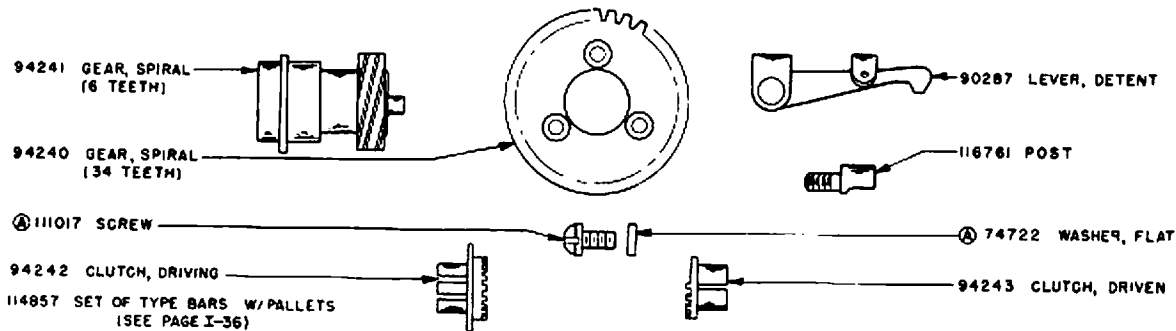
- (C) 1097 SCREW
- (C) 3640 WASHER, LOCK
- (C) 3599 NUT, HEX
- (C) 88969 SPRING
- (C) 88967 PLATE, RETAINER
- (C) 1162 SCREW
- (C) 3640 WASHER, LOCK
- (C) 88963 BRACKET, SPRING
- (C) 88968 STUD
- (B) 3640 WASHER, LOCK
- (B) 3599 NUT, HEX

87403 SET OF PARTS TO ADAPT A MECHANICAL OR ELECTRICAL MOTOR CONTROL MECHANISM TO OPERATE ON SHIFT-BLANK-STOP (EXCLUDES PARTS MARKED (B))

106039 SET OF PARTS (SAME AS ABOVE) FOR PRINTERS EQUIPPED WITH THE AUTOMATIC CARRIAGE RETURN AND LINE FEED MECHANISM (CONSISTS OF PARTS MARKED (C))



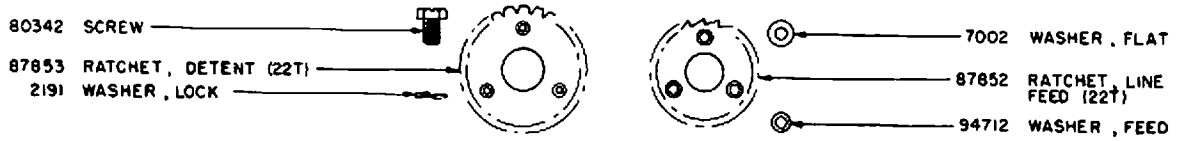
SINGLE PRESSURE ROLLER PARTS



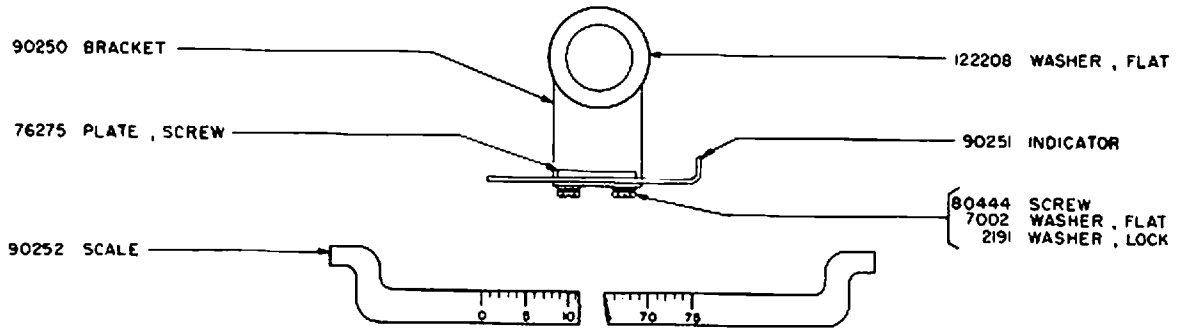
113763 SIX CHARACTERS PER INCH PARTS (HORIZONTALLY)

(A) SEE SEC. IX FOR EXPLANATION

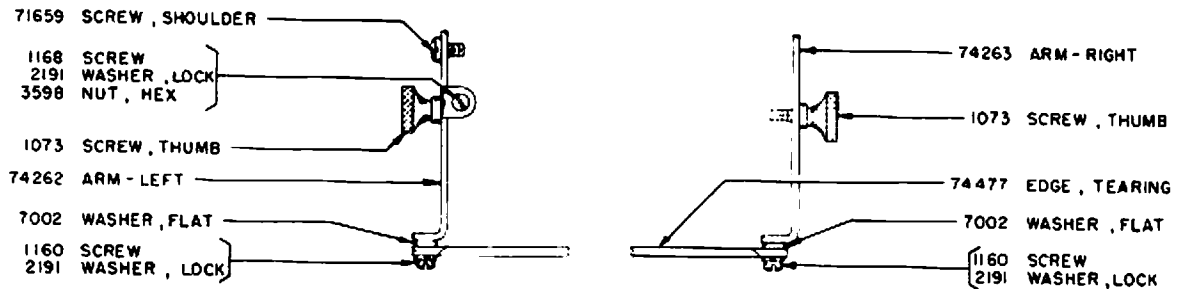




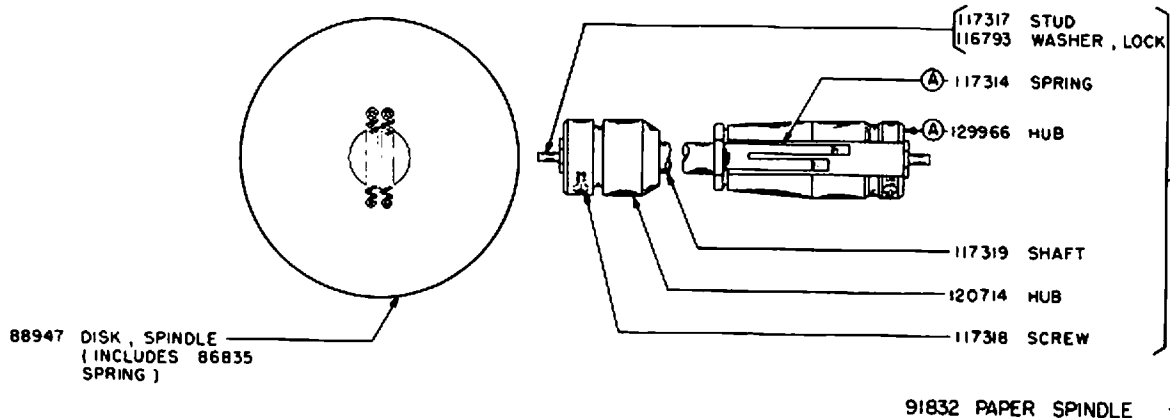
87692 SET OF PARTS FOR FEEDING FOUR LINES PER INCH



90249 SET OF PARTS FOR TABULATOR INDICATION



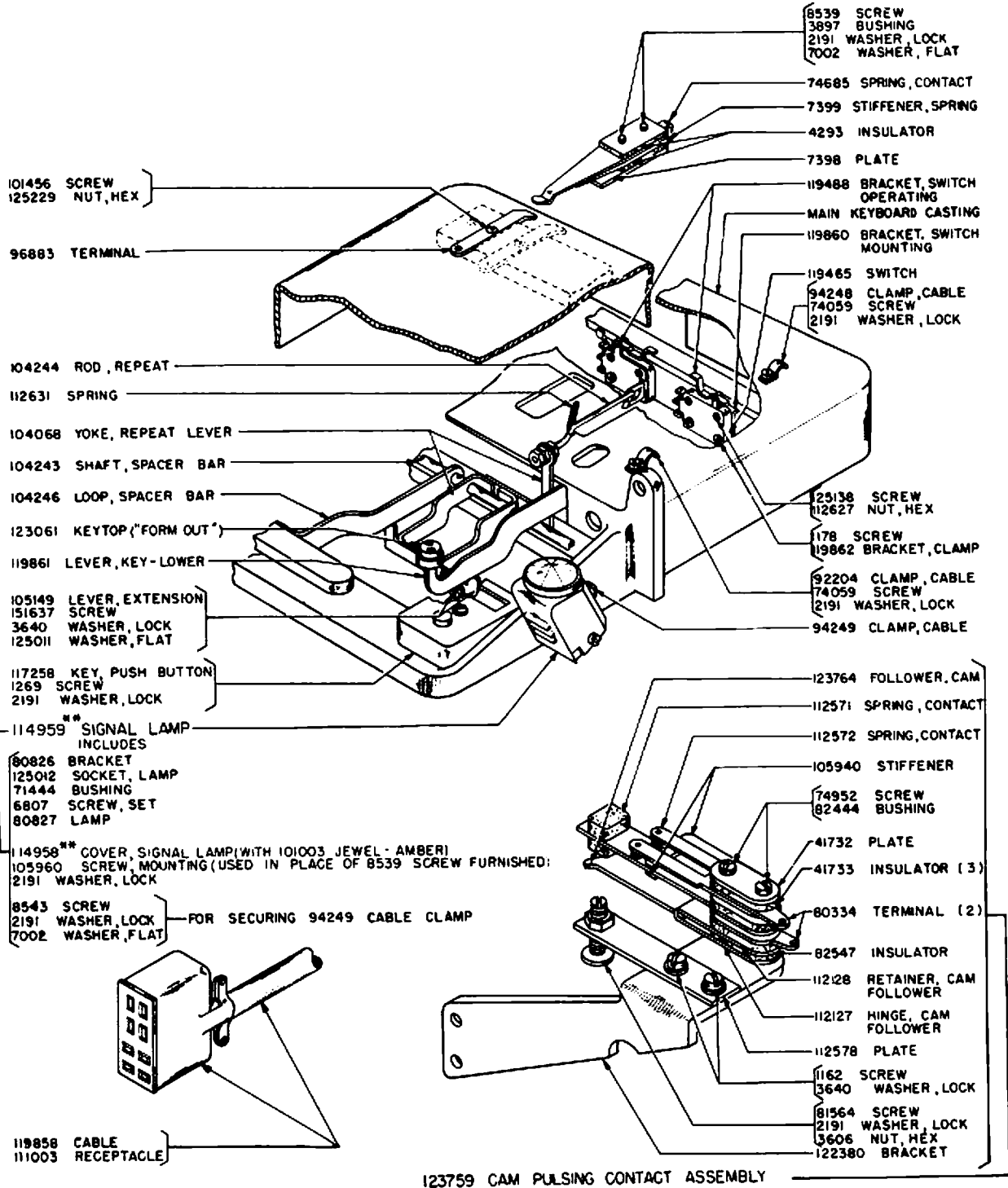
74813 SET OF PARTS FOR PLATEN TEARING EDGE



91832 PAPER SPINDLE

SPINDLE AND DISKS FOR USE WITH MULTI-COPY PAPER

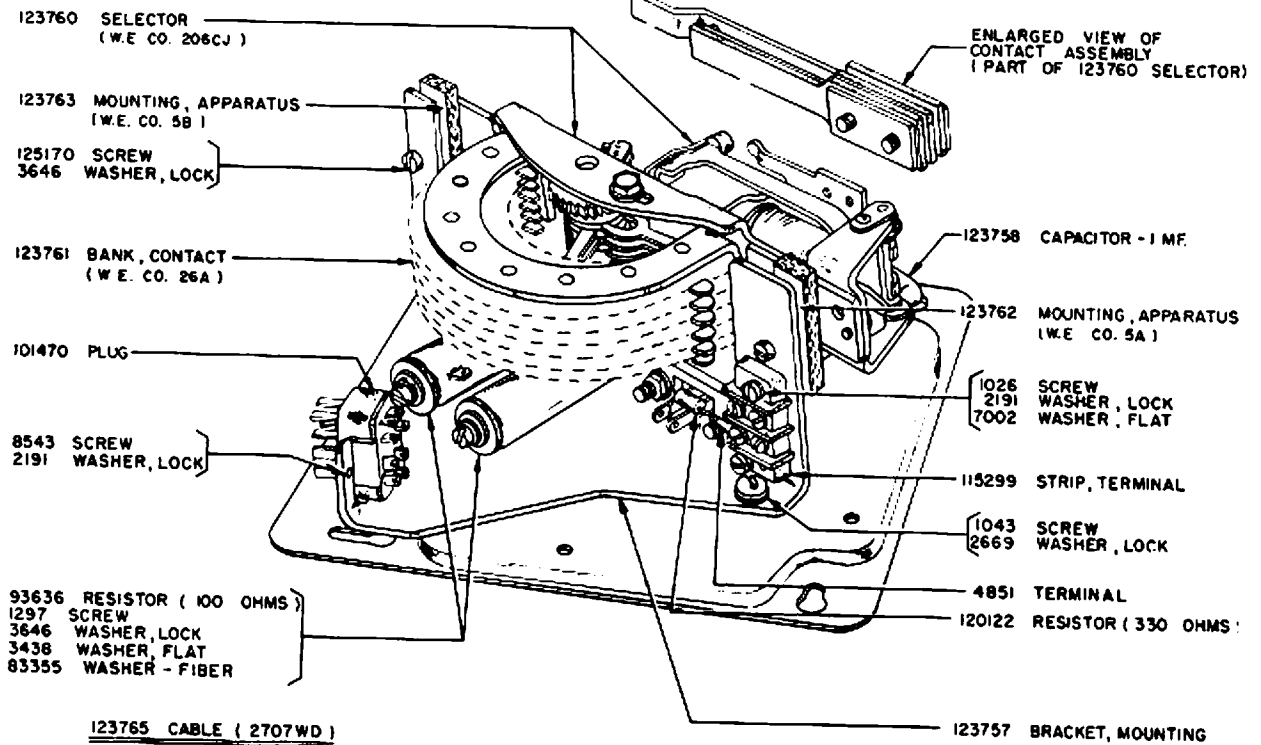
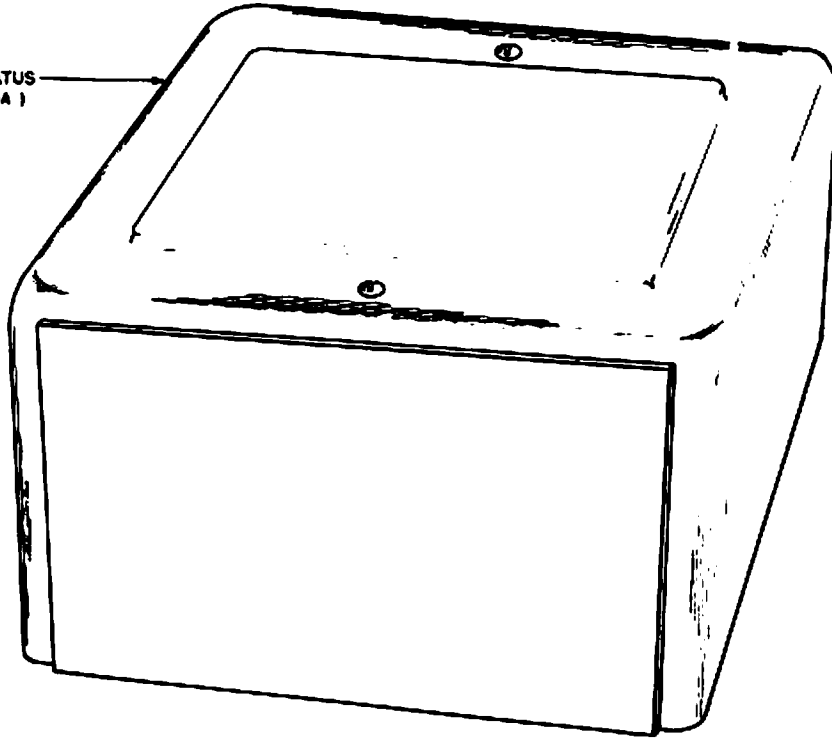
(A) SEE SEC. II FOR EXPLANATION



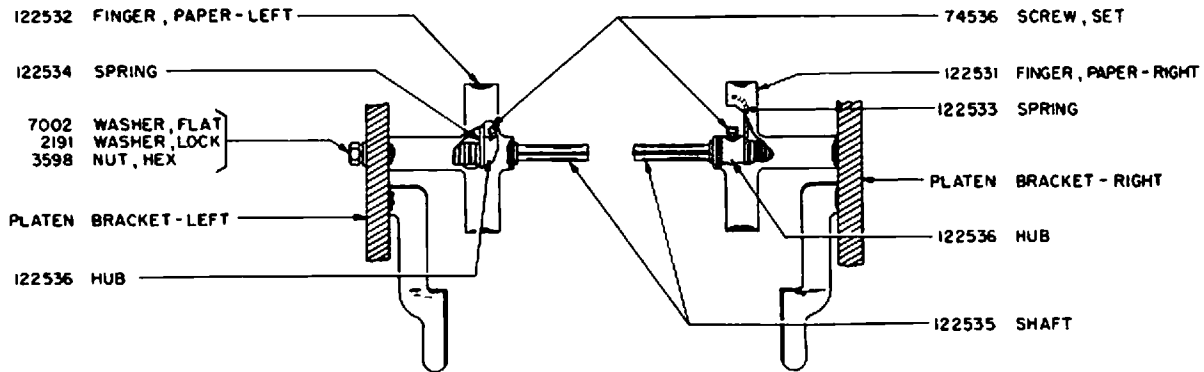
\*\*SEE SEC. IV, PAGE 4 FOR EXPLANATION

- 123745 SET OF PARTS FOR LINE FEED COUNTING
- 123743 LINE FEED COUNTER ASSEMBLY (SHOWN ABOVE)
- 123744 ACCESSORY BOX (SHOWN ON PAGE I-59)

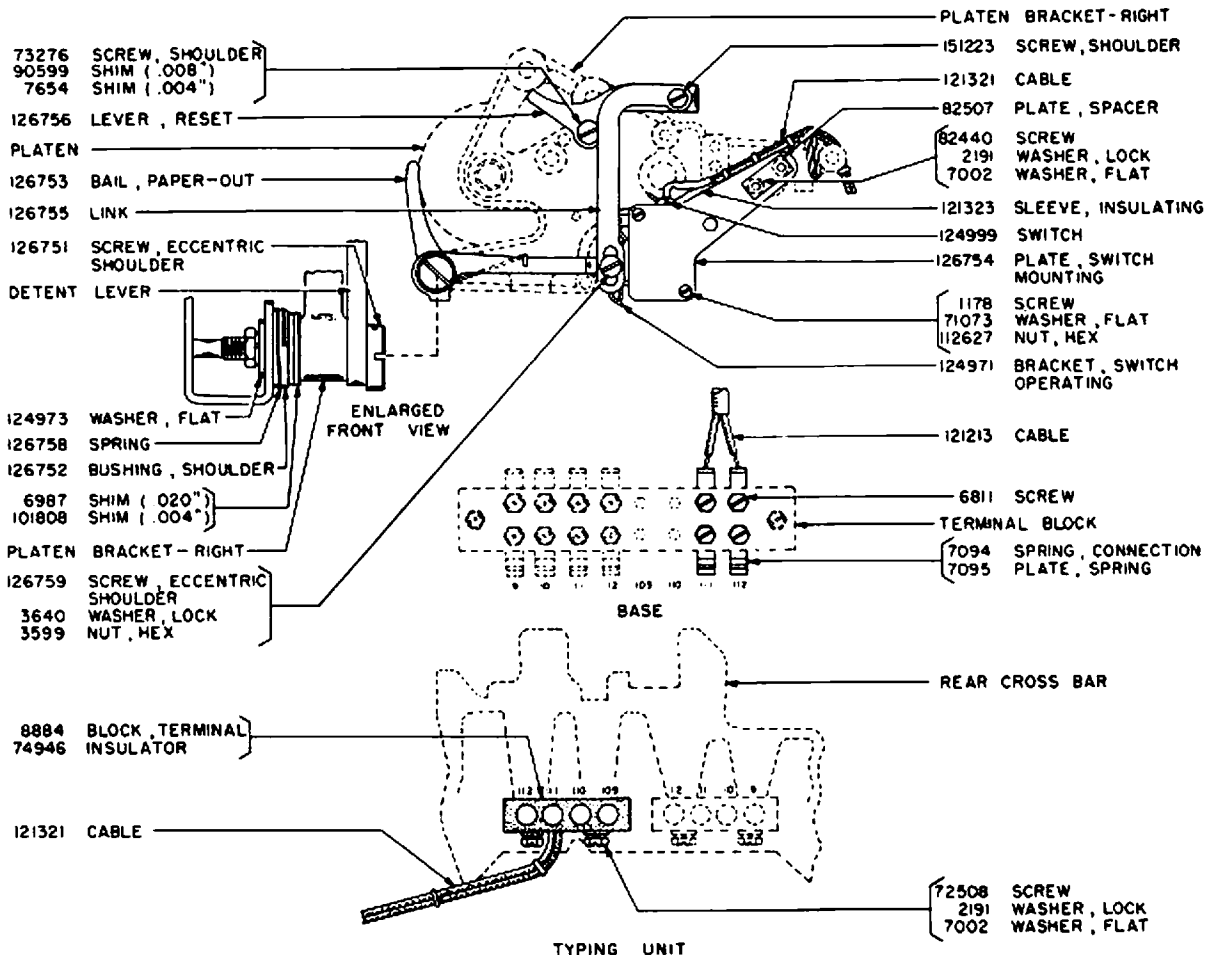
123756 BOX, APPARATUS  
( W.E. CO. 103A )



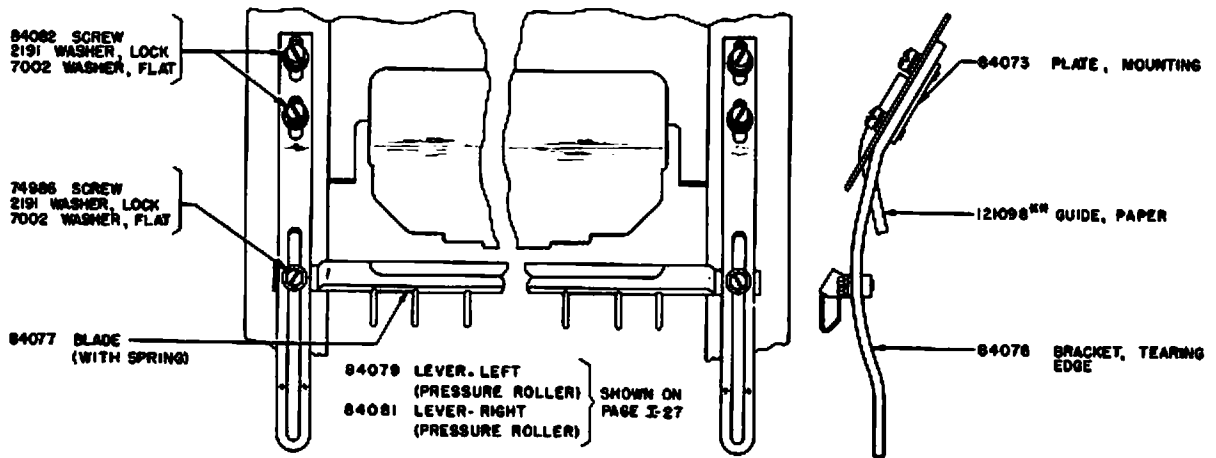
123744 ACCESSORY BOX  
PART OF 123745 SET OF PARTS FOR LINE FEED COUNTING



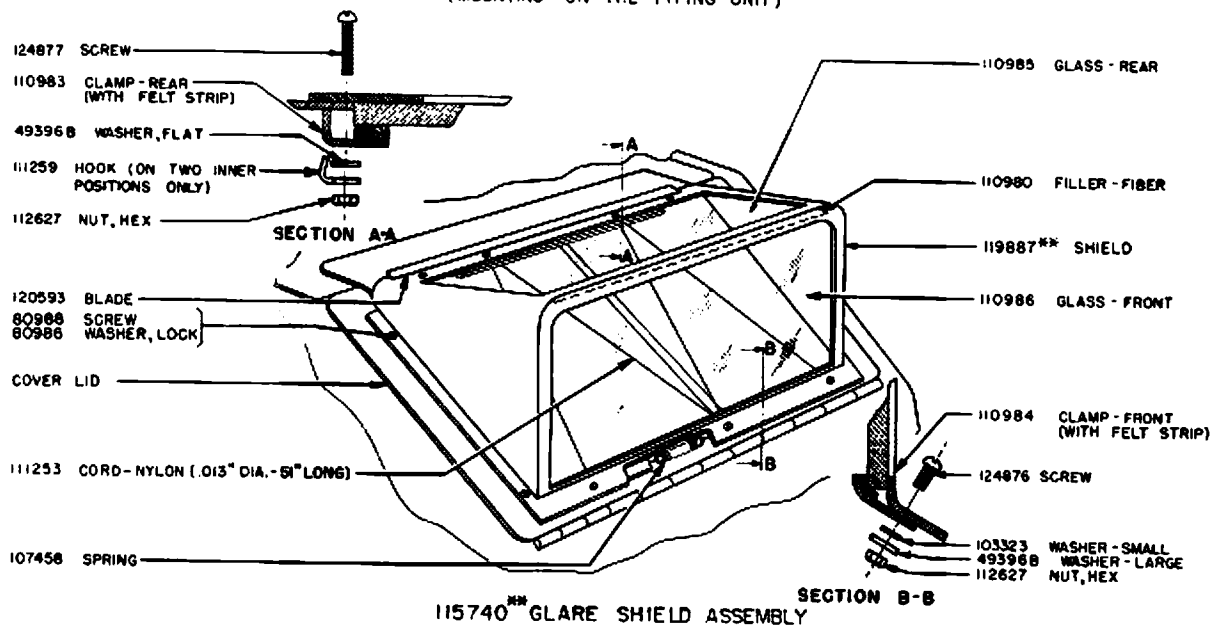
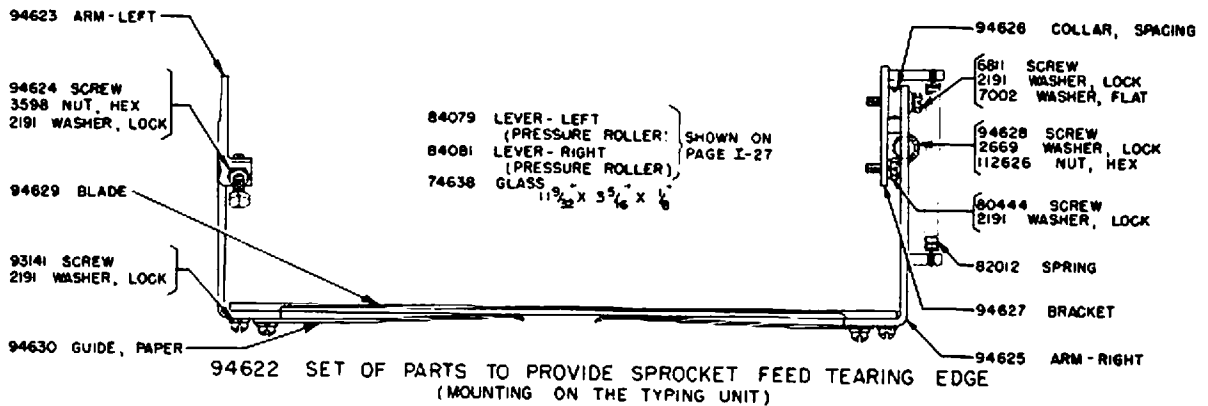
113675 SET OF PARTS FOR INDEPENDENTLY OPERATED PAPER FINGERS



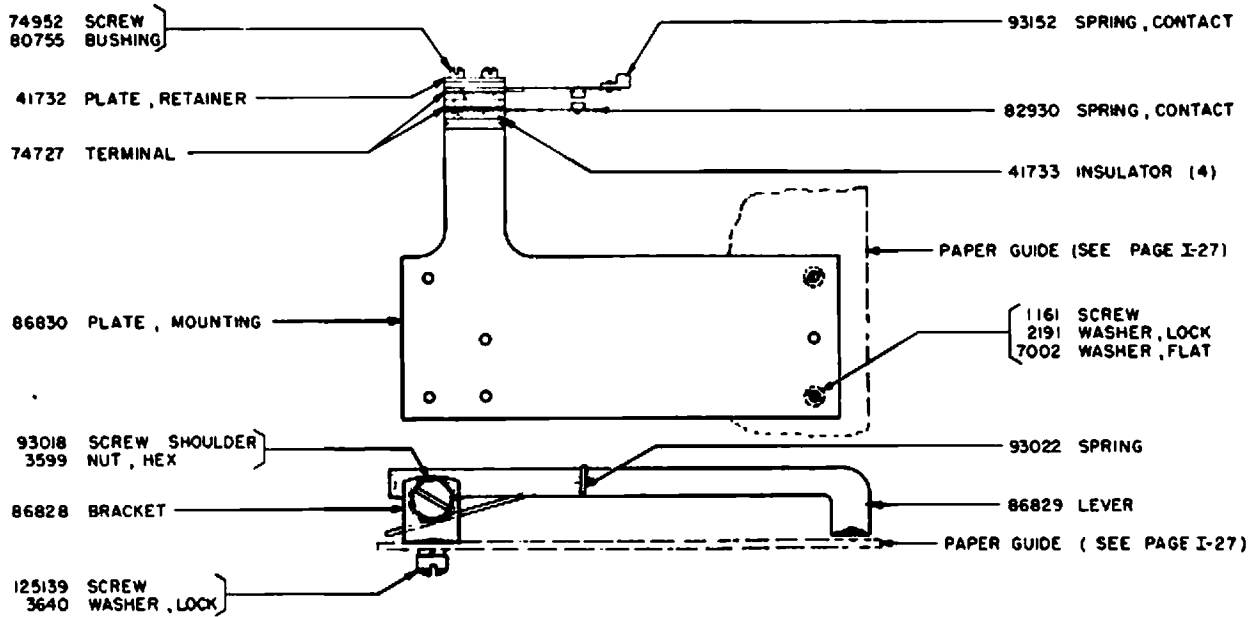
115847 SET OF PARTS TO PROVIDE END-OF-LAST-FORM INDICATING MECHANISM (MOUNTED ON THE TYPING UNIT)



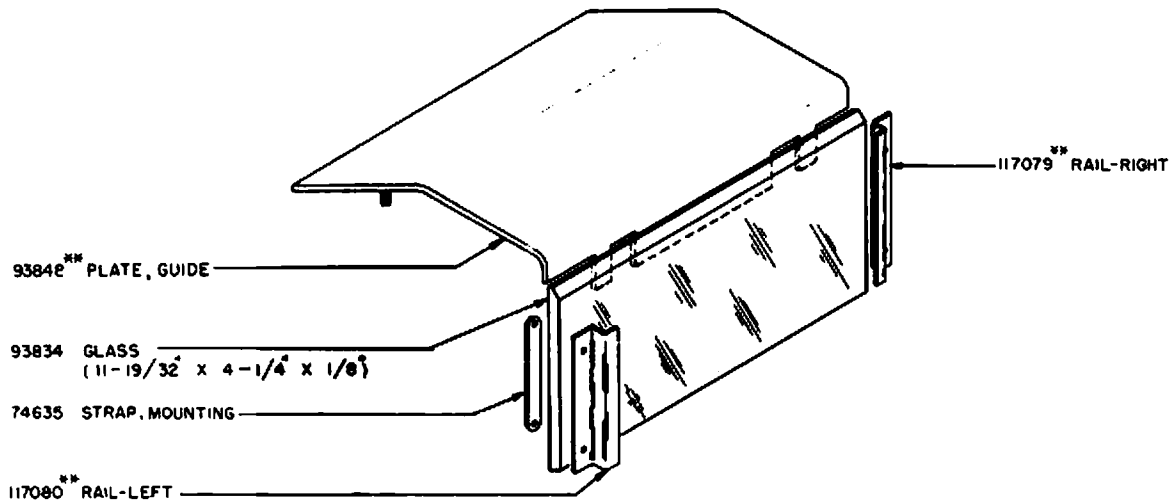
115769\*\* SET OF PARTS TO PROVIDE SPROCKET FEED TEARING EDGE  
(MOUNTED ON THE COVER)



\*\*SEE SEC. IX, PAGE 4 FOR EXPLANATION

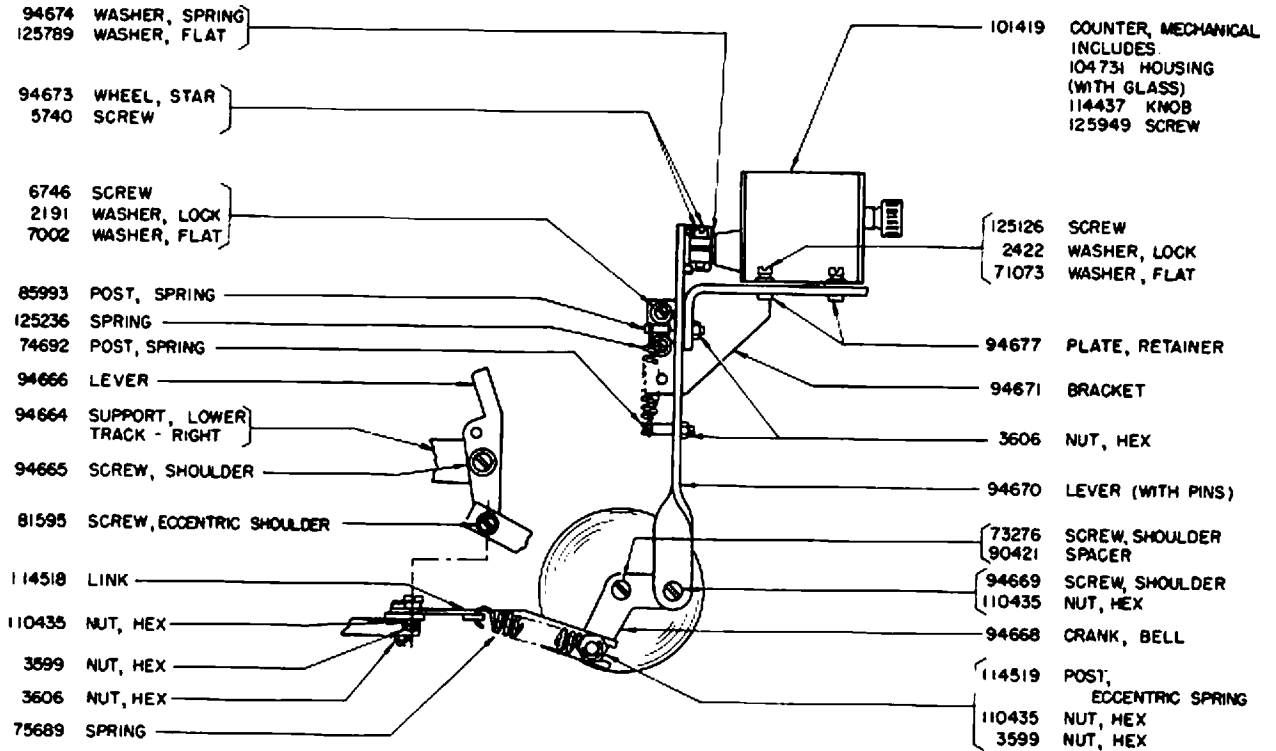


95201 SET OF PARTS TO PROVIDE END-OF-LAST-FORM INDICATING MECHANISM  
(MOUNTED ON THE COVER)

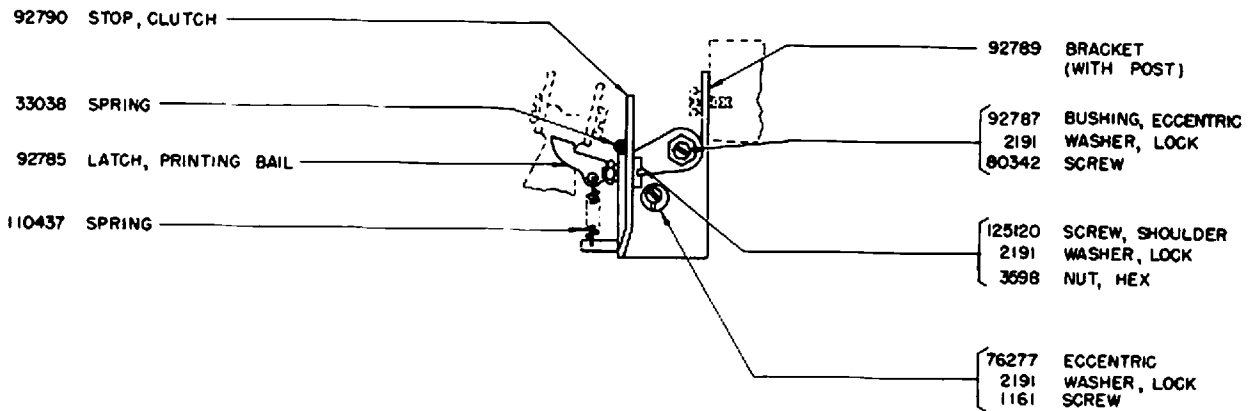


113790<sup>\*\*</sup> PAPER GUIDE PLATE AND COVER GLASS TO PROVIDE TEAR-OFF  
EDGE FOR SHORT FORMS

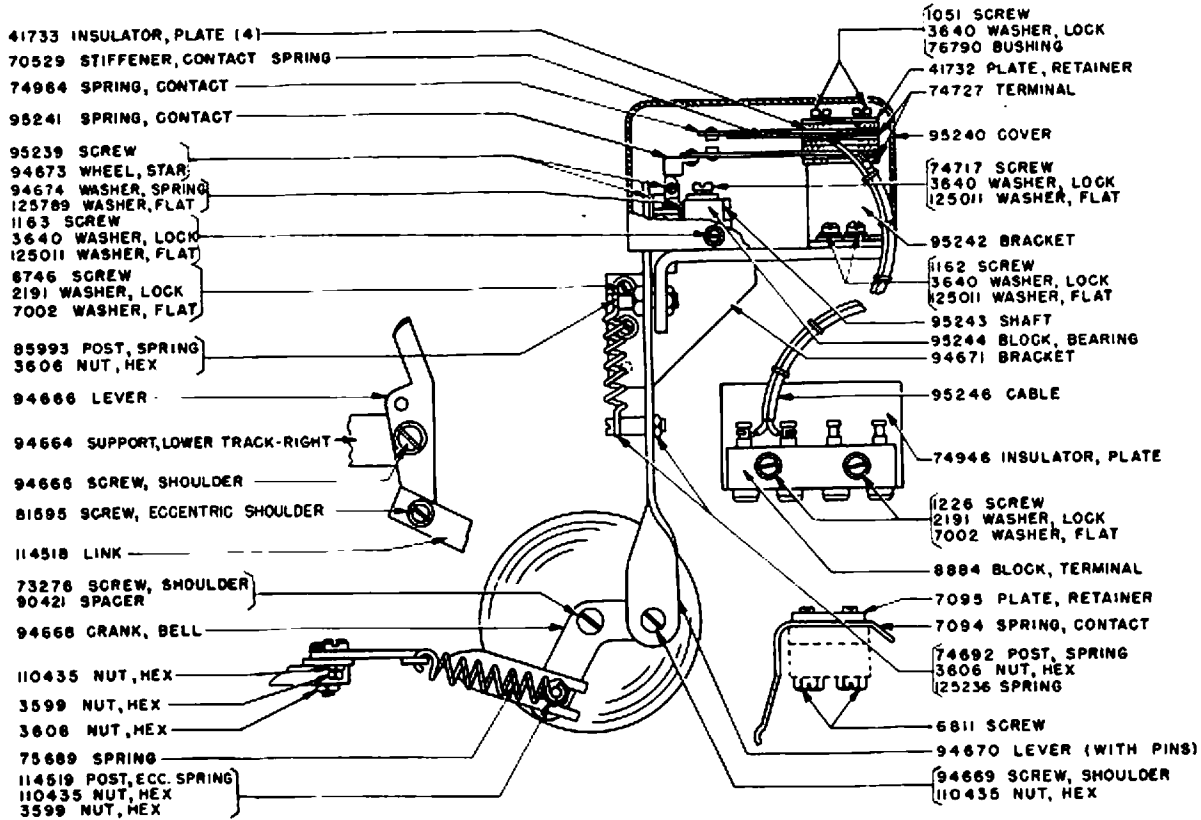
<sup>\*\*</sup> SEE SEC. IV, PAGE 4 FOR EXPLANATION



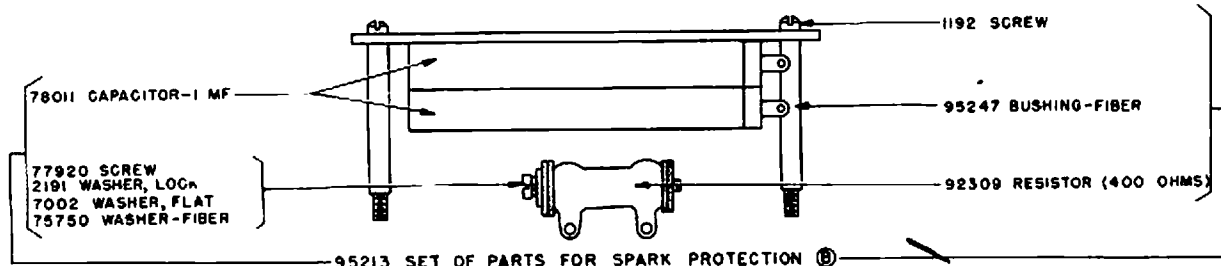
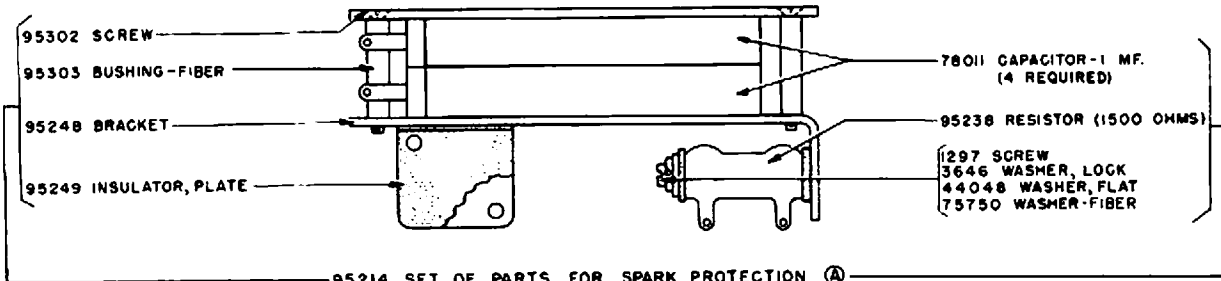
94663 SET OF PARTS FOR MECHANICAL WORD COUNTER



92784 SET OF PARTS TO PROVIDE END-OF-LINE PRINTING AND SPACING CUTOUT MECHANISM



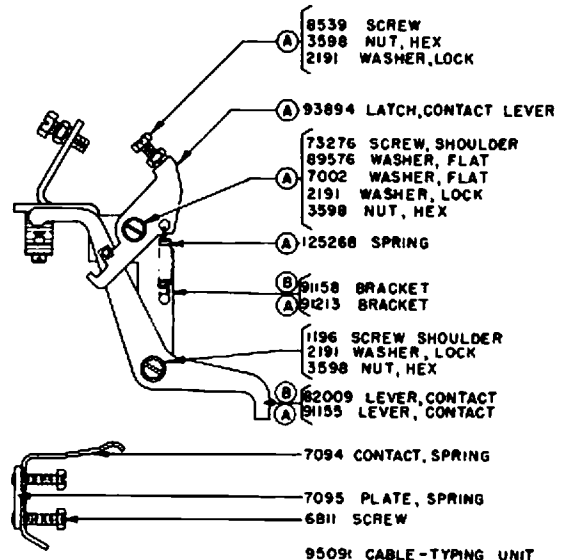
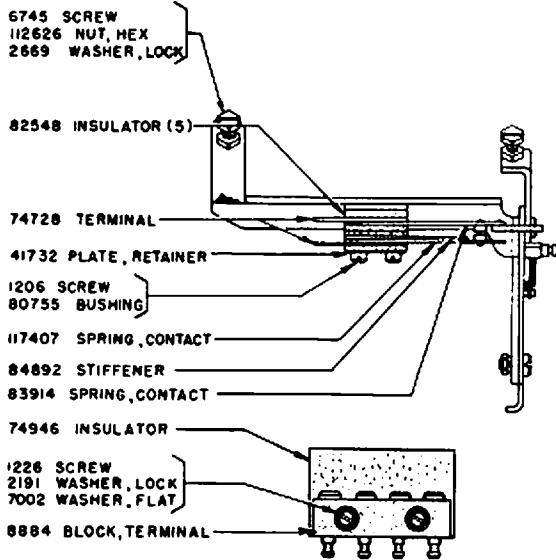
PARTS FOR ELECTRICAL COUNTER



95216 SET OF PARTS TO PROVIDE ELECTRICAL WORD AND OPERATIONS COUNTER FOR USE WITH A C (EXCLUDES PARTS MARKED (A))

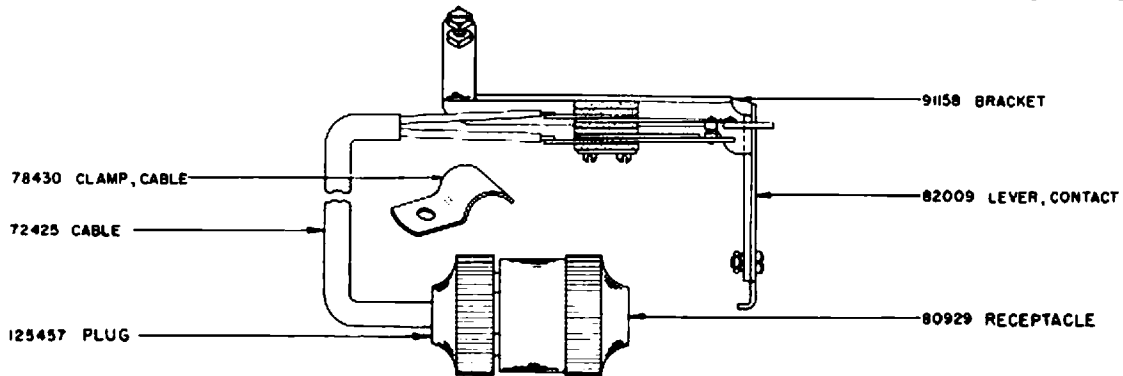
95217 SET OF PARTS TO PROVIDE ELECTRICAL WORD AND OPERATIONS COUNTER FOR USE WITH D C (EXCLUDES PARTS MARKED (B))



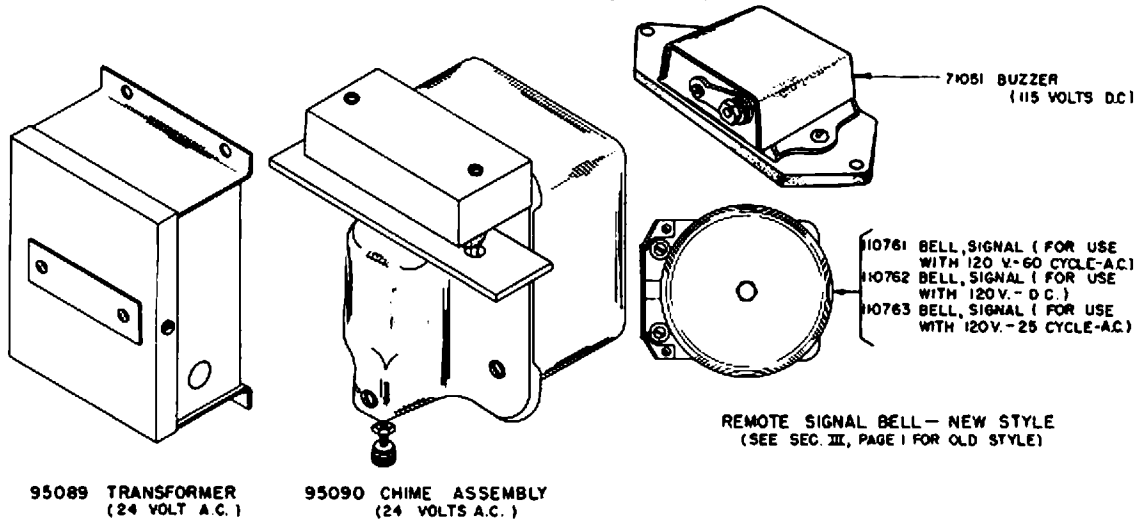


95091 CABLE-TYPING UNIT  
95092 CABLE-BASE

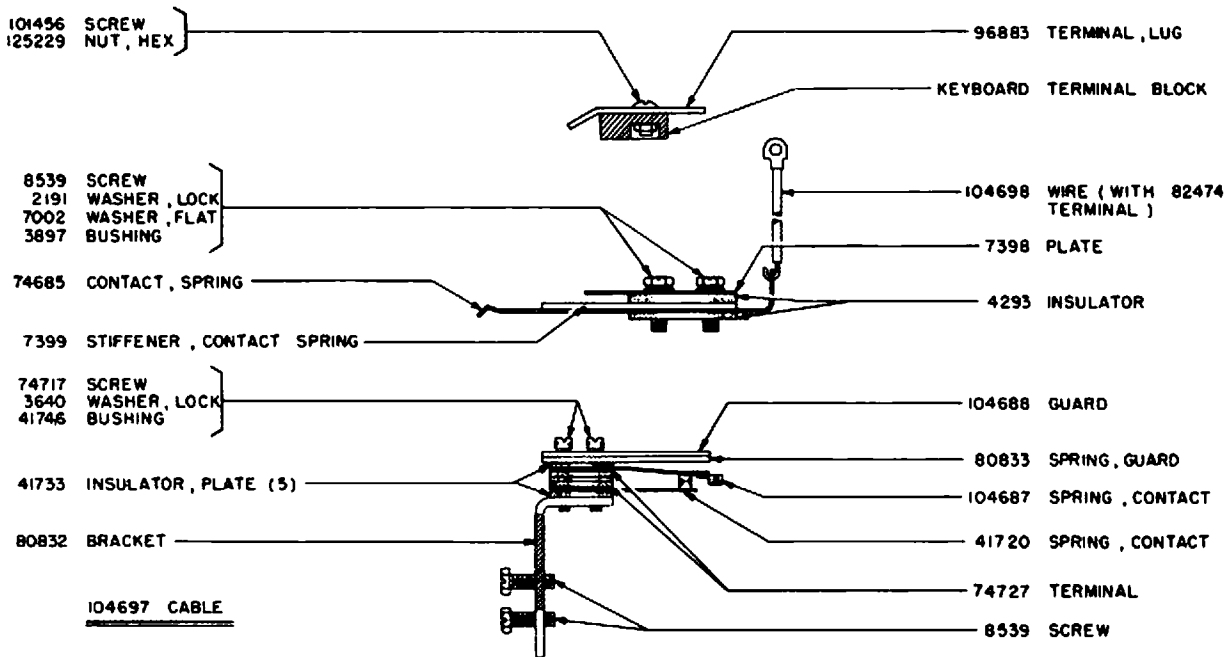
95088 SET OF PARTS FOR REMOTE SIGNAL BELL CONTACTS (WITHOUT LATCH) EXCLUDES PARTS MARKED (A)  
91159 SET OF PARTS FOR REMOTE SIGNAL BELL CONTACTS (WITH LATCH) EXCLUDES PARTS MARKED (B)



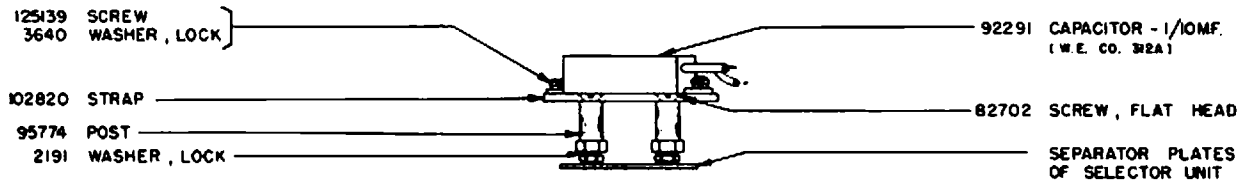
80956 SET OF PARTS FOR REMOTE SIGNAL BELL CONTACTS  
(PARTS SHOWN BUT NOT LISTED SAME AS ABOVE)



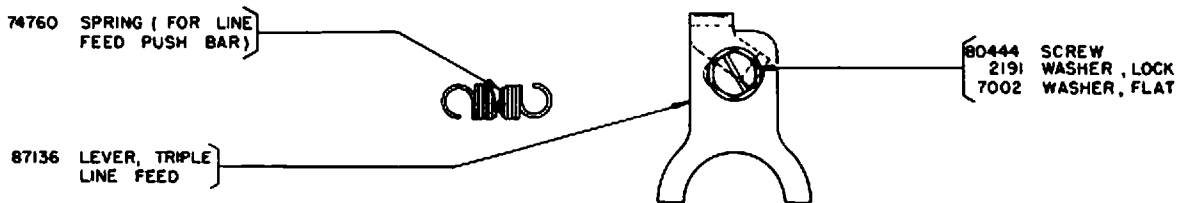
REMOTE SIGNAL BELL-NEW STYLE  
(SEE SEC. III, PAGE 1 FOR OLD STYLE)



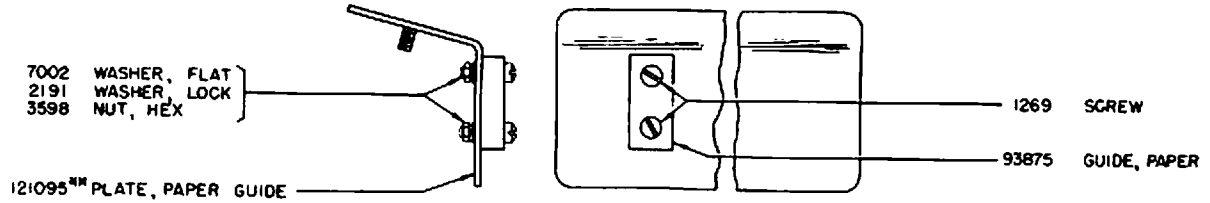
104666 SET OF PARTS FOR CAM OPERATED CONTACTS



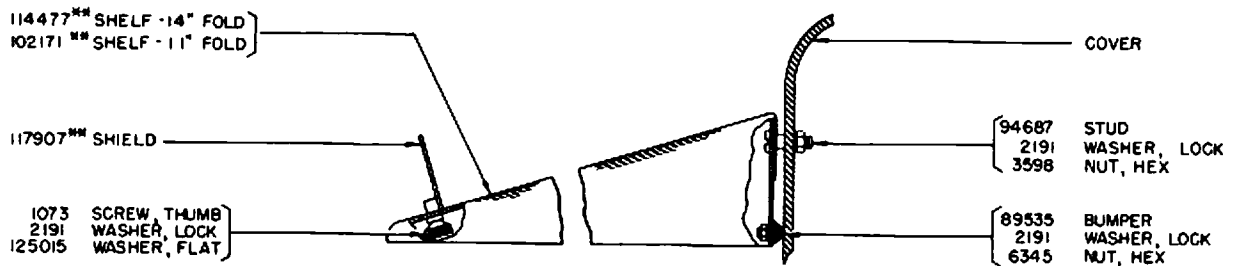
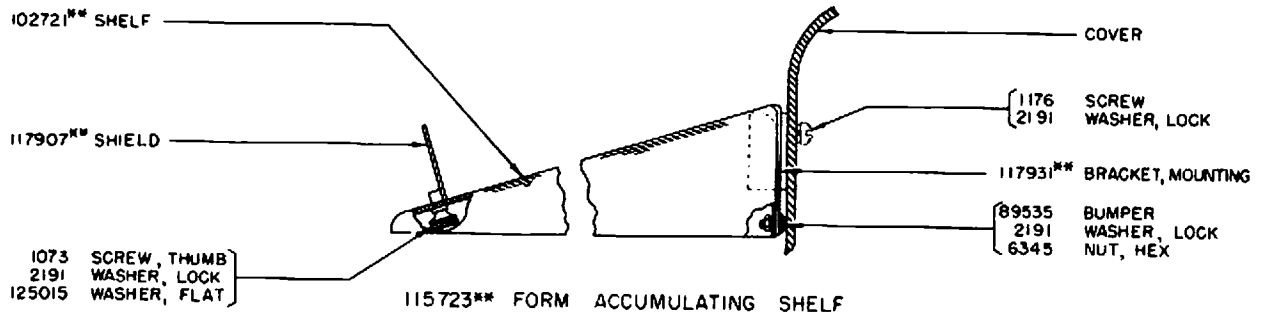
102821 SET OF PARTS TO PROVIDE 1/10MF CAPACITOR ACROSS UPPER CASE "H" MOTOR CONTROL CONTACTS



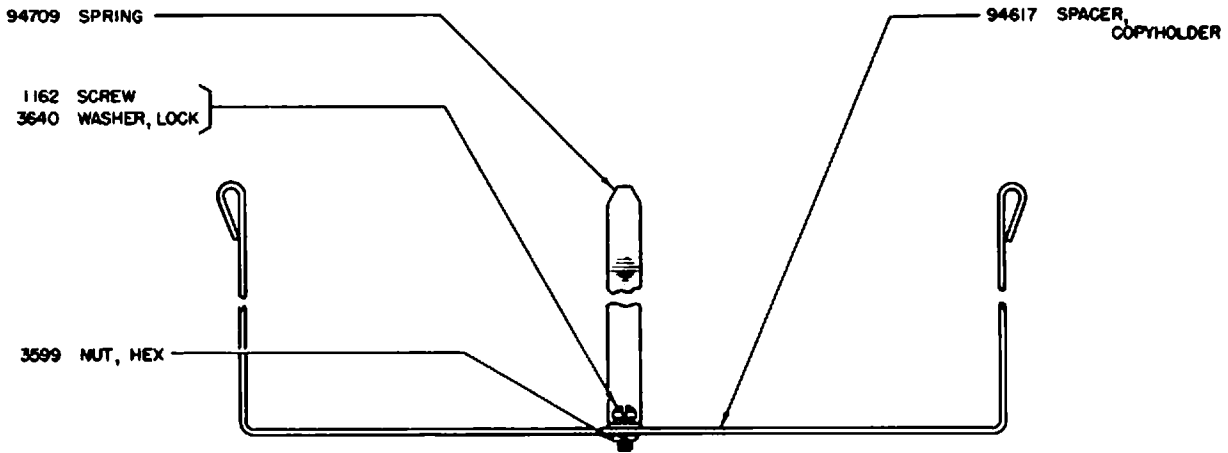
91507 SET OF PARTS FOR TRIPLE LINE FEED FUNCTION



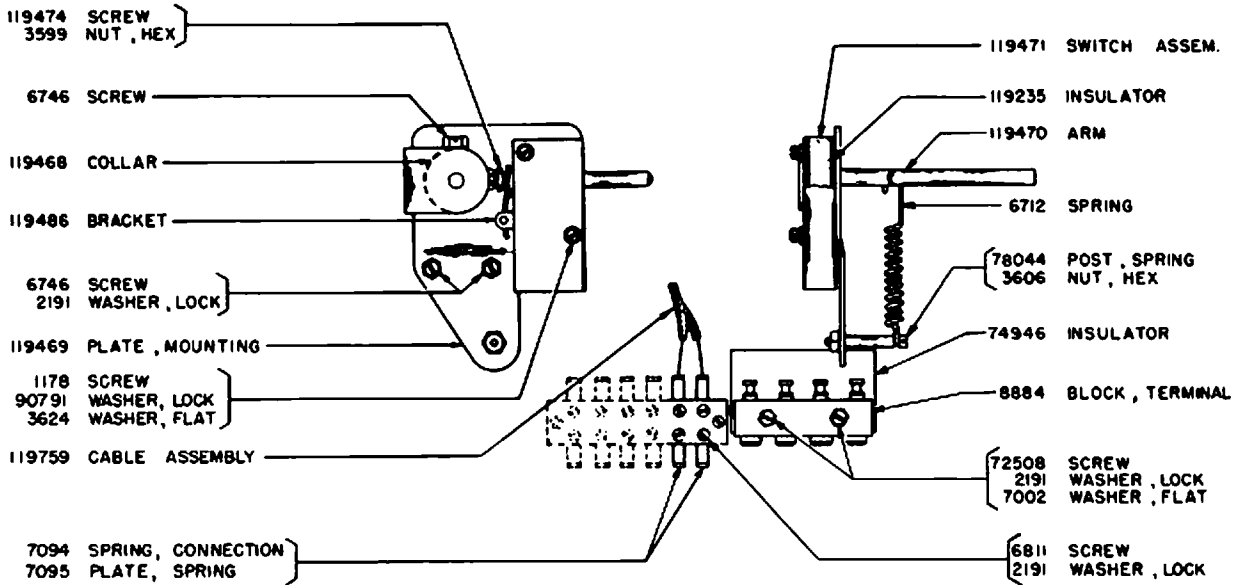
121096\*\* PAPER GUIDE PLATE ASSEMBLY  
TO FACILITATE HANDLING OF INDIVIDUAL FORMS OR MULTICOPY 8 1/2" WIDE  
WITHOUT LIFTING THE TOP HINGED SECTION OF THE COVER



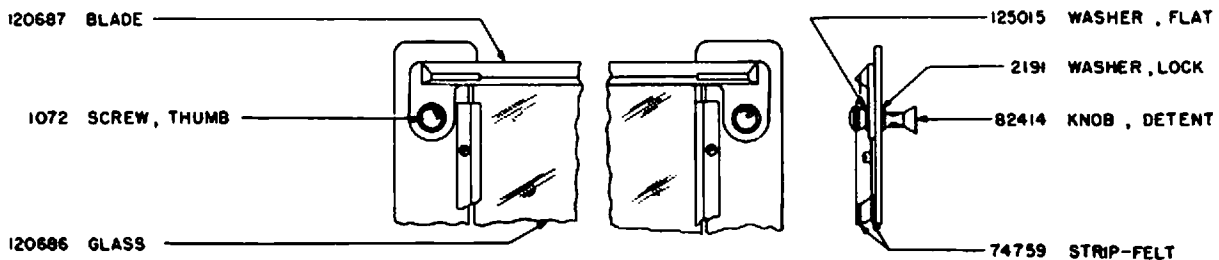
\*\*SEE SEC. IX, PAGE 4 FOR EXPLANATION



94616 SET OF PARTS FOR INSTRUCTION CARD HOLDER

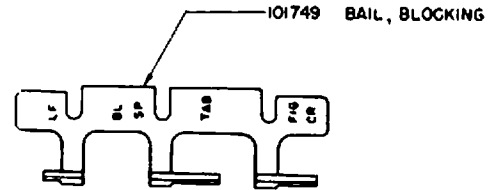


119975 SET OF PARTS FOR PAPER-OUT DEVICE

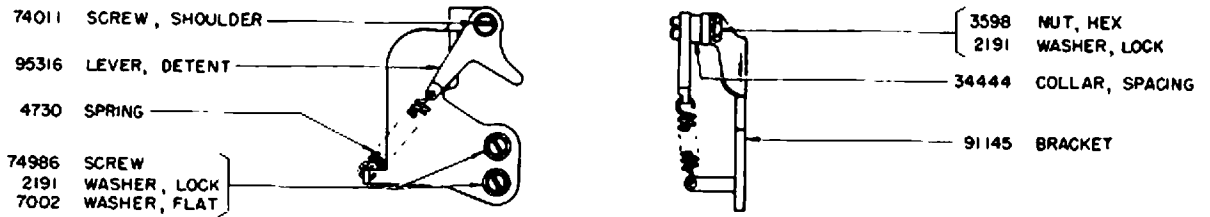


120685 SET OF PARTS TO PROVIDE TEARING  
EDGE WITH COVER GLASS

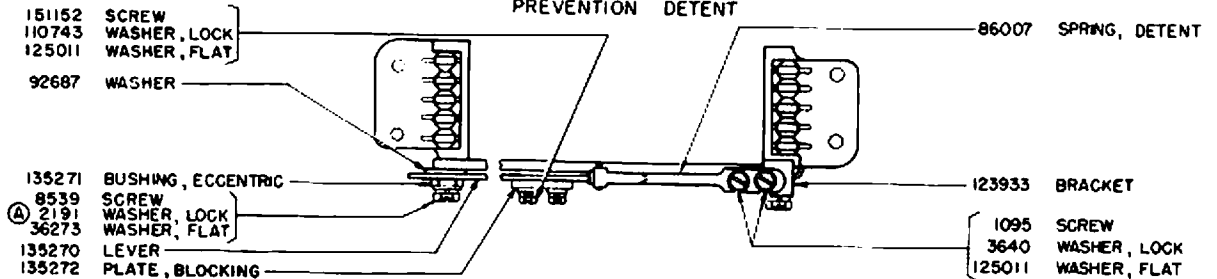
- 101750 TYPE BAR WITH PALLET
  - 101751 TYPE BAR WITH PALLET
  - 101752 TYPE BAR WITH PALLET
  - 74845 TYPE BAR WITH PALLET
  - 74185 PULL BAR (2)
  - 7634 SPRING (2)
- LISTED ON PAGES I-36, I-37 & I-38



103440 SET OF PARTS TO PROVIDE FOR PRINTING AND SPACING ON BLANK AND OTHER FUNCTIONS



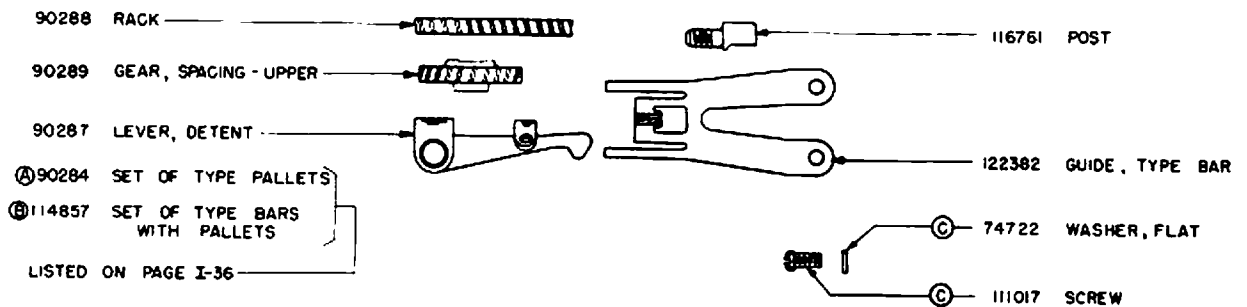
95317 SET OF PARTS TO APPLY SIGNAL DISTORTION PREVENTION DETENT



113761 SET OF PARTS TO PROVIDE "H" SUPPRESSION ON KEYBOARDS (EXCLUDES PARTS MARKED (A))



10696B SET OF PARTS TO PROVIDE FOR 84 CHARACTERS PER LINE OR 11 2/3 CHARACTERS PER INCH

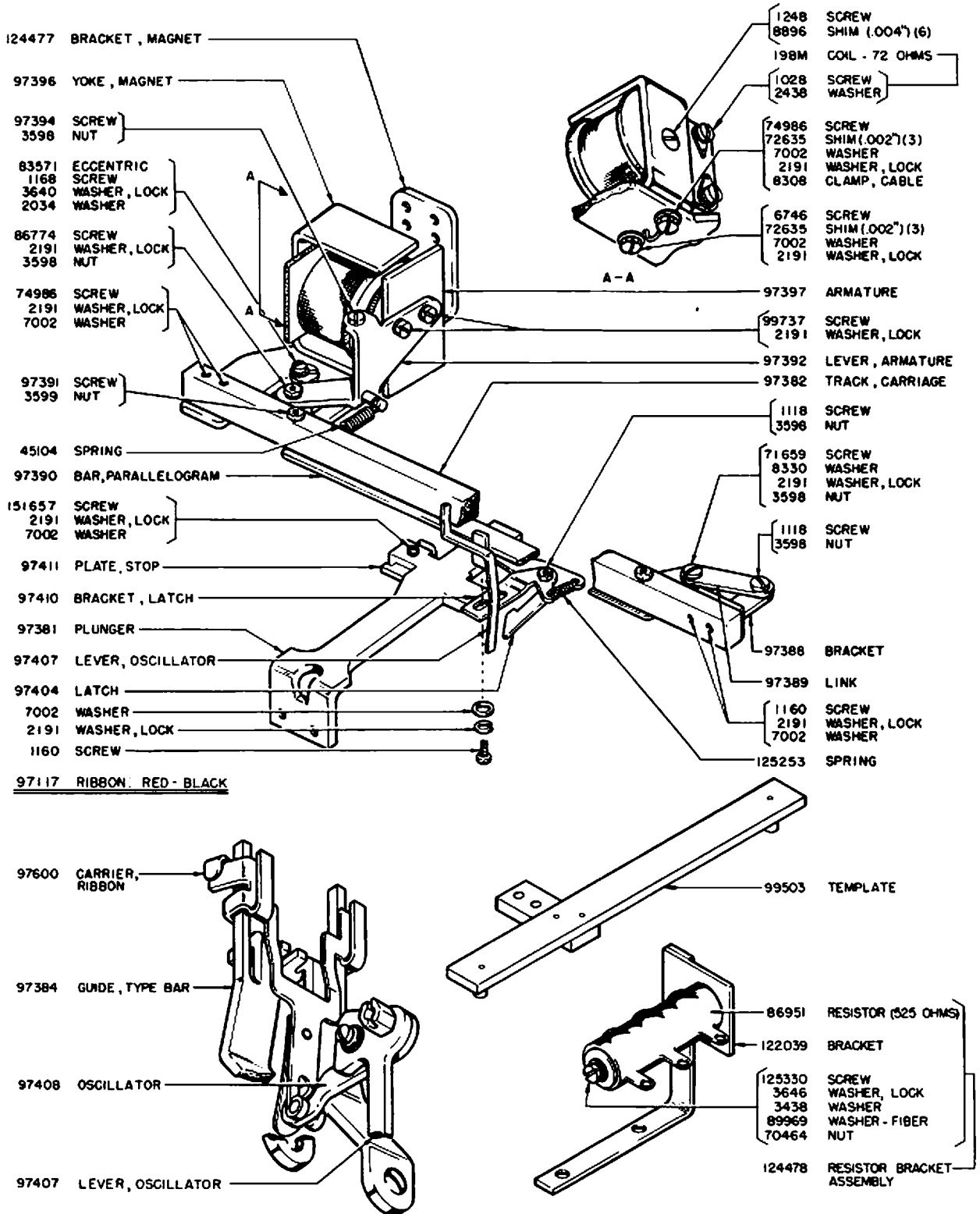


- (A) 84893 SET OF PARTS TO PROVIDE SPACING FOR 8 CHARACTERS TO THE INCH
- (B) 106939 SET OF PARTS TO PROVIDE SPACING FOR 8 CHARACTERS TO THE INCH

(C) FOR NOTE OF EXPLANATION SEE SEC. IX, PARAGRAPH FOR PAGE I-56 (A).

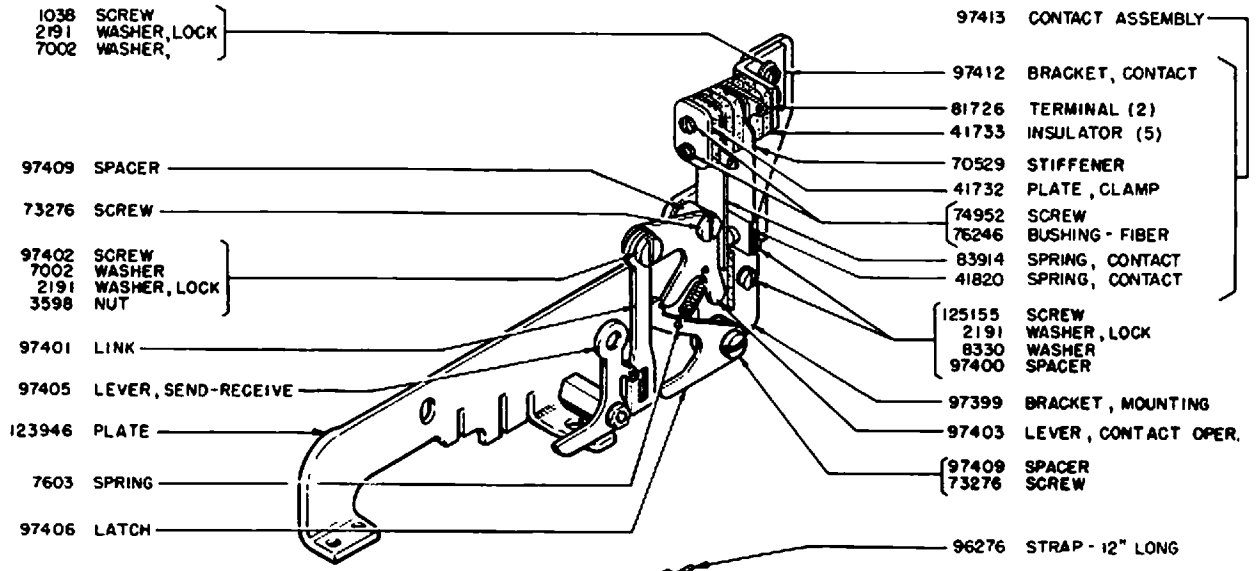
ACCESSORIES

1037B

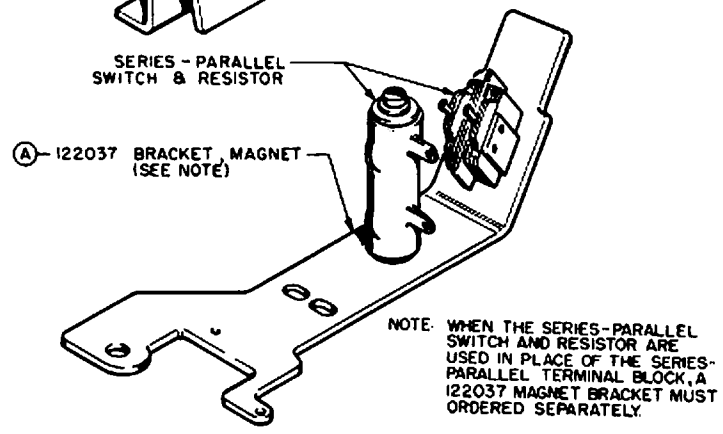
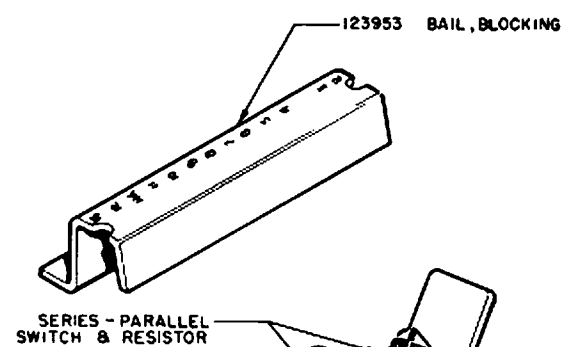
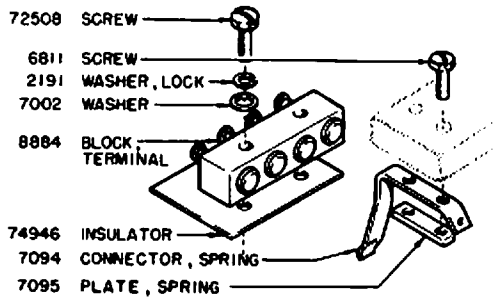
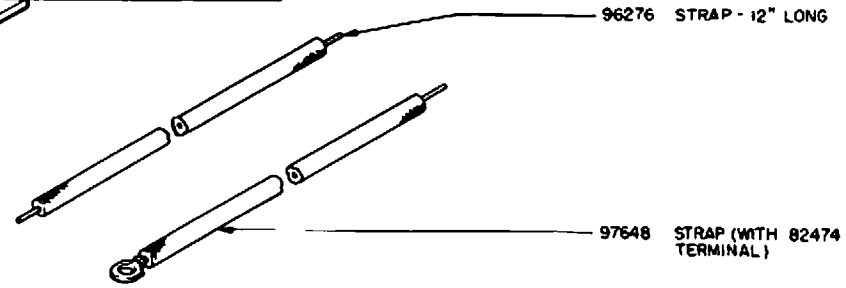
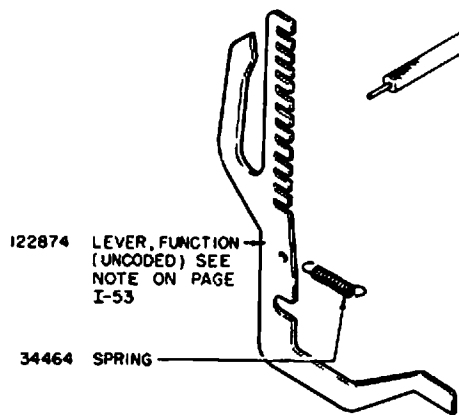


123525 SET OF PARTS FOR MANUALLY OPERATED TWO-COLOR RIBBON CONTROL  
(INCLUDES ALL PARTS SHOWN ON THIS PAGE)

99502 SET OF PARTS FOR AUTOMATIC OPERATION OF TWO-COLOR RIBBON CONTROL  
(INCLUDES ALL PARTS SHOWN ON THIS PAGE AND PAGE I-71, EXCLUDING PART MARKED (A))

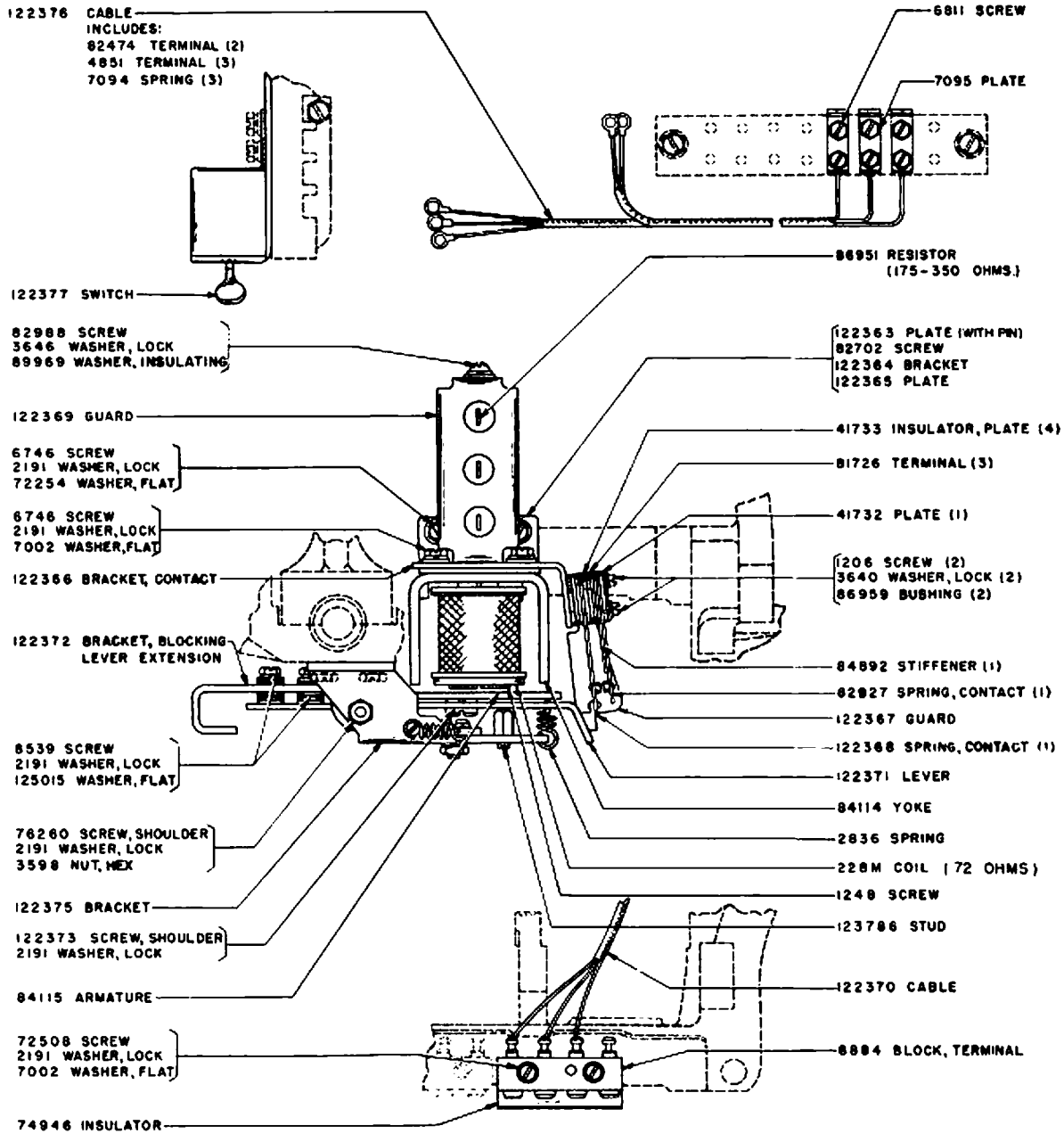


97420 CABLE



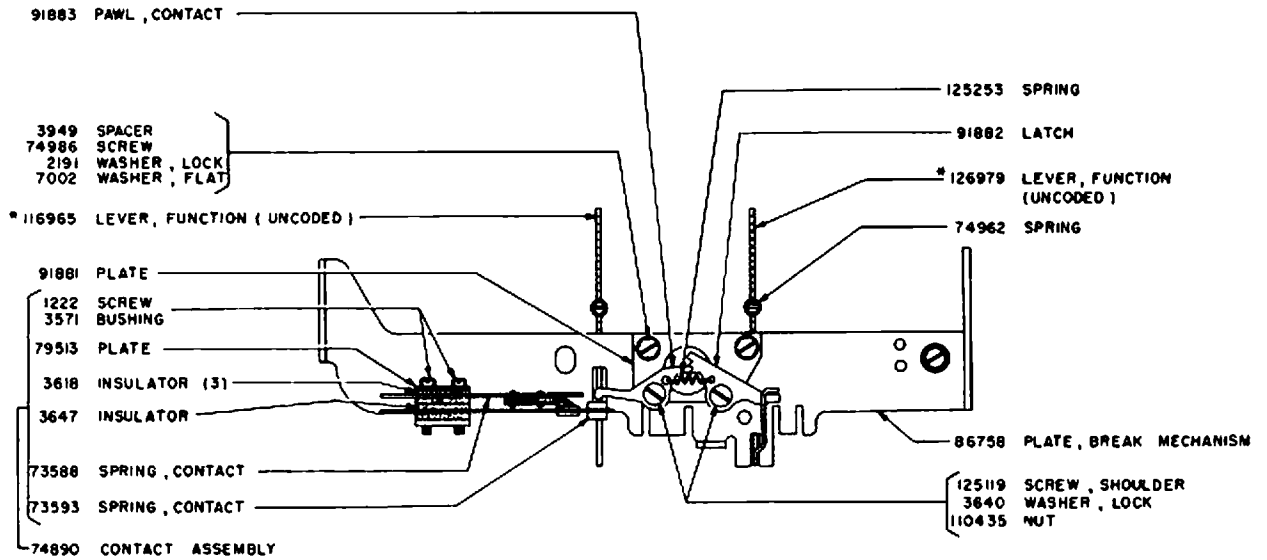
NOTE: WHEN THE SERIES-PARALLEL SWITCH AND RESISTOR ARE USED IN PLACE OF THE SERIES-PARALLEL TERMINAL BLOCK, A 122037 MAGNET BRACKET MUST BE ORDERED SEPARATELY.

99502 SET OF PARTS FOR AUTOMATIC OPERATION OF TWO-COLOR RIBBON CONTROL (INCLUDES ALL PARTS SHOWN ON THIS PAGE AND PAGE I-70, EXCLUDES PART MARKED (A))

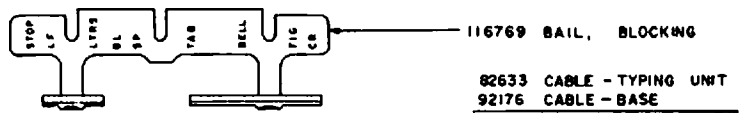


122362 SET OF PARTS FOR SWITCH CUT-IN AND AUTOMATIC  
CUT-OUT OF THE HORIZONTAL TABULATION FEATURE

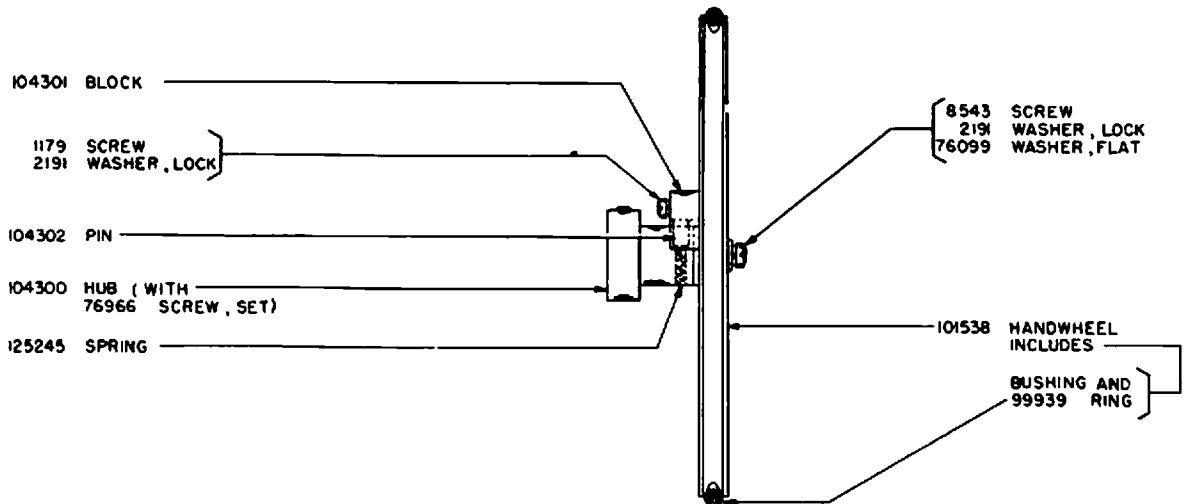




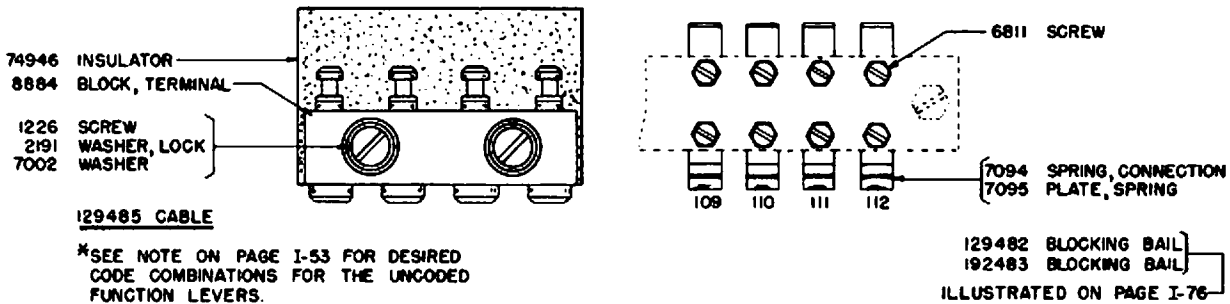
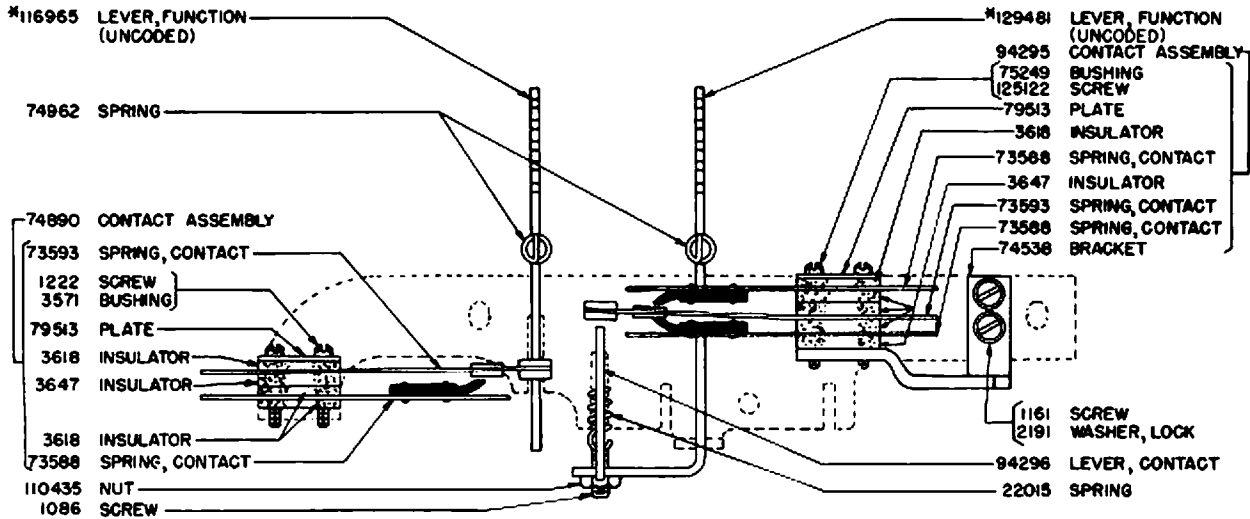
\* SEE NOTE ON PAGE I-53 FOR DESIRED CODE COMBINATIONS FOR THE UNCODED FUNCTION LEVERS.



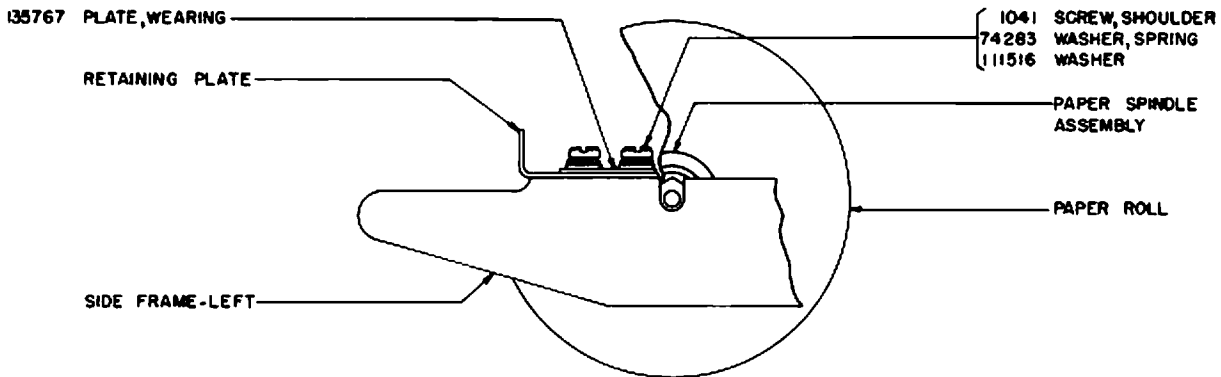
115889 SET OF PARTS TO CONTROL REPERFORATOR FROM MODEL 15 PRINTER  
( FOR USE WITH HORIZONTAL TABULATION )



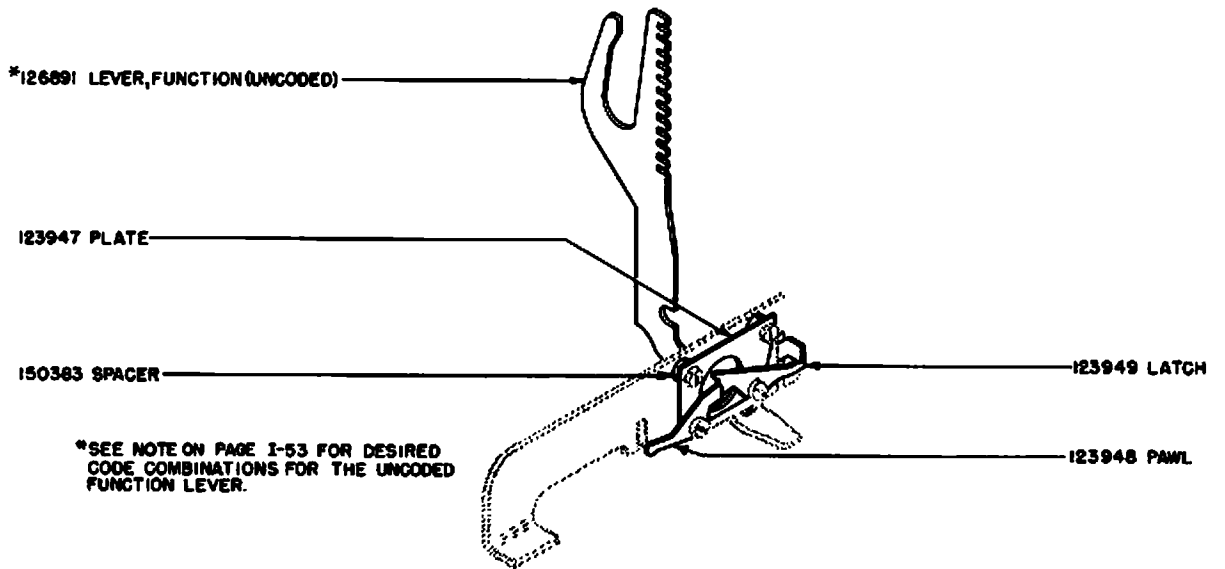
104521 HANDWHEEL ASSEMBLY



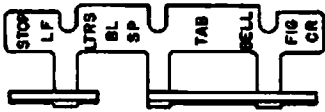
129480 SET OF PARTS TO OPEN AND CLOSE CIRCUITS EXTERNAL TO MODEL 15 PRINTER



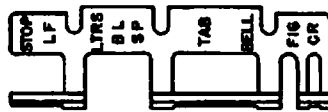
113780 SET OF PARTS FOR PRINTER HAVING EXCESSIVE WEAR ON THE LEFT SIDE FRAME (ALUMINUM)



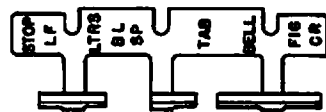
113700 SET OF PARTS FOR TWO-COLOR RIBBON PRINTER EQUIPPED WITH REPERFORATOR CONTROL



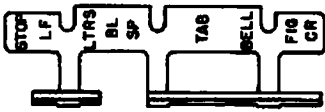
81956 (9,10)



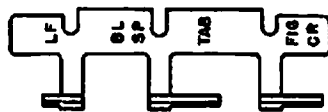
91519 (3,9,10,11)



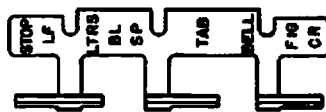
91885 (6,9,10,13)



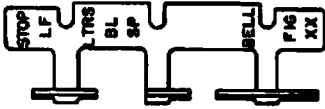
94300 (9,10,13)



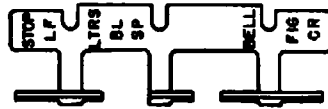
101749 (4,5,9,10,11,13)



104084 (4,5,9,10)



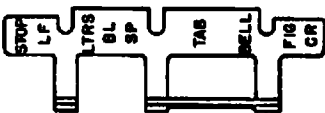
105381 (6,9,10,13)



106038 (6,9,10)



116769 (7,8,9,10,13)



118491 (2,3,9,10,11,12,13)



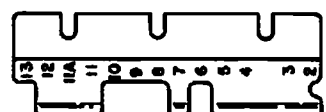
123953 (BLOCKS ALL FUNCTION LEVERS)



129482 (10)



129483 (9,10,13)



129557 (6,8,9,10,13)

**FUNCTION LEVER BLOCKING BAILS**  
 NUMBERS IN PARENTHESIS INDICATE POSITIONS OF NON-BLOCKING  
 FUNCTION LEVERS