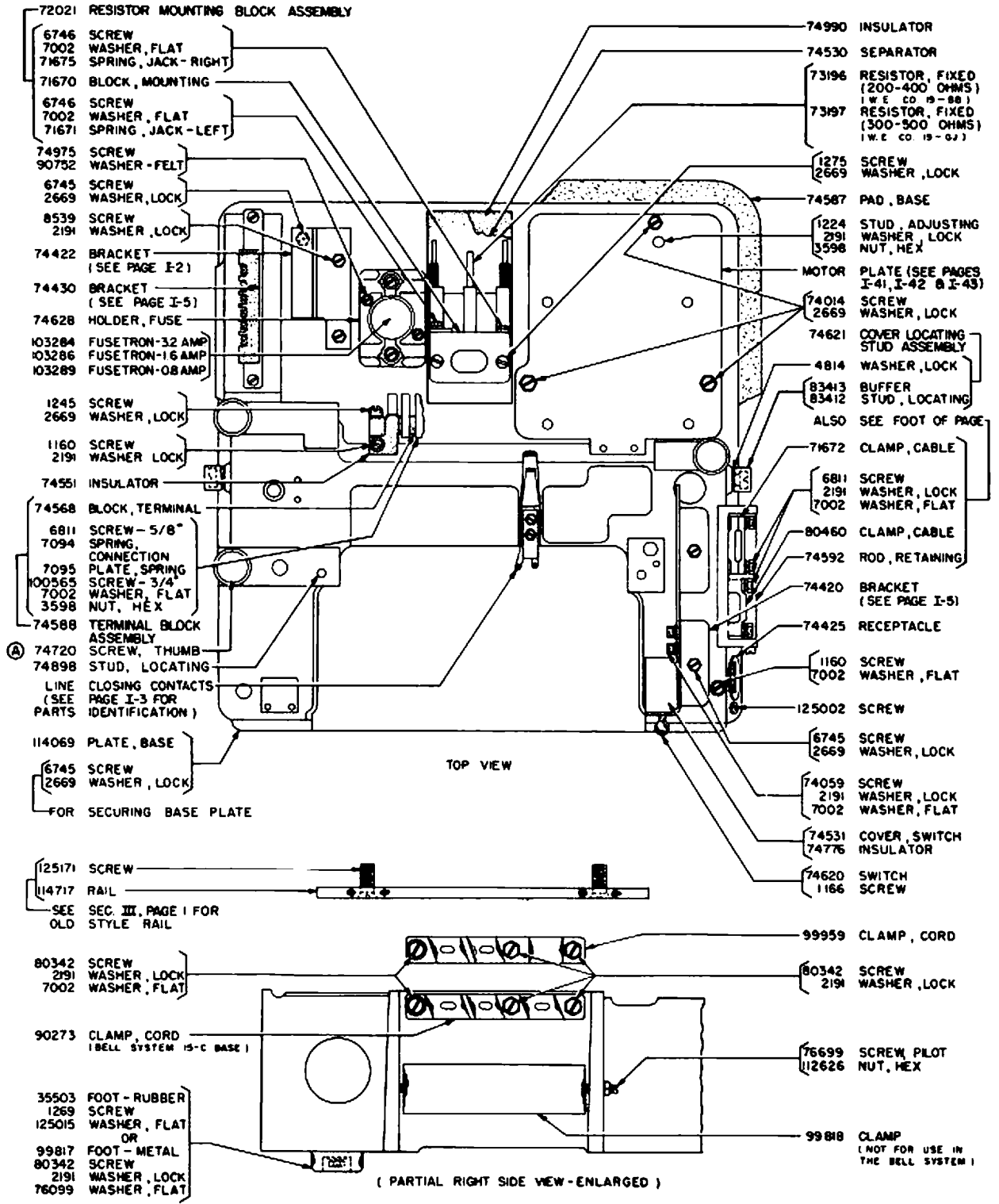


SECTION I

BASIC PARTS AND ACCESSORIES

PAGES I-1 THROUGH I-76



- 72021 RESISTOR MOUNTING BLOCK ASSEMBLY
- 6746 SCREW
- 7002 WASHER, FLAT
- 71675 SPRING, JACK - RIGHT
- 71670 BLOCK, MOUNTING
- 6746 SCREW
- 7002 WASHER, FLAT
- 71671 SPRING, JACK - LEFT
- 74975 SCREW
- 90752 WASHER - FELT
- 6745 SCREW
- 2669 WASHER, LOCK
- 8539 SCREW
- 2191 WASHER, LOCK
- 74422 BRACKET (SEE PAGE I-2)
- 74430 BRACKET (SEE PAGE I-5)
- 74628 HOLDER, FUSE
- 103284 FUSE TRON-32 AMP
- 103286 FUSE TRON-16 AMP
- 103289 FUSE TRON-08 AMP
- 1245 SCREW
- 2669 WASHER, LOCK
- 1160 SCREW
- 2191 WASHER, LOCK
- 74551 INSULATOR
- 74568 BLOCK, TERMINAL
- 6811 SCREW - 5/8"
- 7094 SPRING, CONNECTION
- 7095 PLATE, SPRING
- 100565 SCREW - 3/4"
- 7002 WASHER, FLAT
- 3598 NUT, HEX
- 74588 TERMINAL BLOCK ASSEMBLY
- 74720 SCREW, THUMB
- 74898 STUD, LOCATING
- LINE CLOSING CONTACTS (SEE PAGE I-3 FOR PARTS IDENTIFICATION)
- 114069 PLATE, BASE
- 6745 SCREW
- 2669 WASHER, LOCK
- FOR SECURING BASE PLATE

- 74990 INSULATOR
- 74530 SEPARATOR
- 73196 RESISTOR, FIXED (200-400 OHMS) (W.E. CO. 19-88)
- 73197 RESISTOR, FIXED (300-500 OHMS) (W.E. CO. 19-02)
- 1275 SCREW
- 2669 WASHER, LOCK
- 74587 PAD, BASE
- 1224 STUD, ADJUSTING
- 2191 WASHER, LOCK
- 3598 NUT, HEX
- MOTOR PLATE (SEE PAGES I-41, I-42 & I-43)
- 74014 SCREW
- 2669 WASHER, LOCK
- 74621 COVER LOCATING STUD ASSEMBLY
- 4814 WASHER, LOCK
- 83413 BUFFER STUD, LOCATING
- 83412 ALSO SEE FOOT OF PAGE
- 74672 CLAMP, CABLE
- 6811 SCREW
- 2191 WASHER, LOCK
- 7002 WASHER, FLAT
- 80460 CLAMP, CABLE
- 74592 ROD, RETAINING
- 74420 BRACKET (SEE PAGE I-5)
- 74425 RECEPTACLE
- 1160 SCREW
- 7002 WASHER, FLAT
- 125002 SCREW
- 6745 SCREW
- 2669 WASHER, LOCK
- 74059 SCREW
- 2191 WASHER, LOCK
- 7002 WASHER, FLAT
- 74531 COVER, SWITCH
- 74776 INSULATOR
- 74620 SWITCH
- 1166 SCREW

125171 SCREW

114717 RAIL

SEE SEC. III, PAGE I FOR OLD STYLE RAIL

- 80342 SCREW
- 2191 WASHER, LOCK
- 7002 WASHER, FLAT
- 90273 CLAMP, CORD (BELL SYSTEM 15-C BASE)
- 35503 FOOT - RUBBER
- 1269 SCREW
- 125015 WASHER, FLAT OR
- 99817 FOOT - METAL
- 80342 SCREW
- 2191 WASHER, LOCK
- 76099 WASHER, FLAT

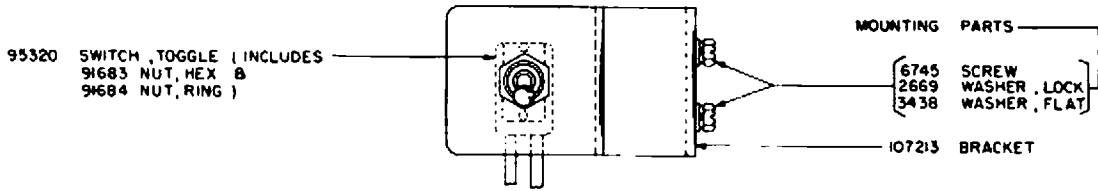
- 99959 CLAMP, CORD
- 80342 SCREW
- 2191 WASHER, LOCK
- 76699 SCREW PLOT
- 112626 NUT, HEX
- 99818 CLAMP (NOT FOR USE IN THE BELL SYSTEM)

(A) SEE SEC. III FOR EXPLANATION

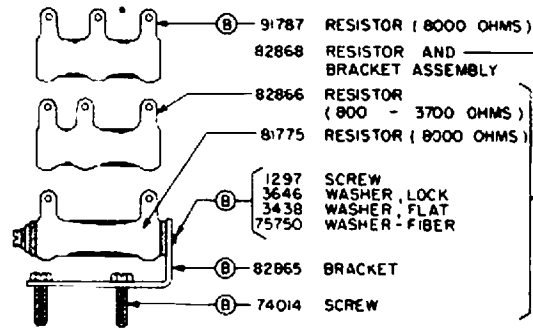
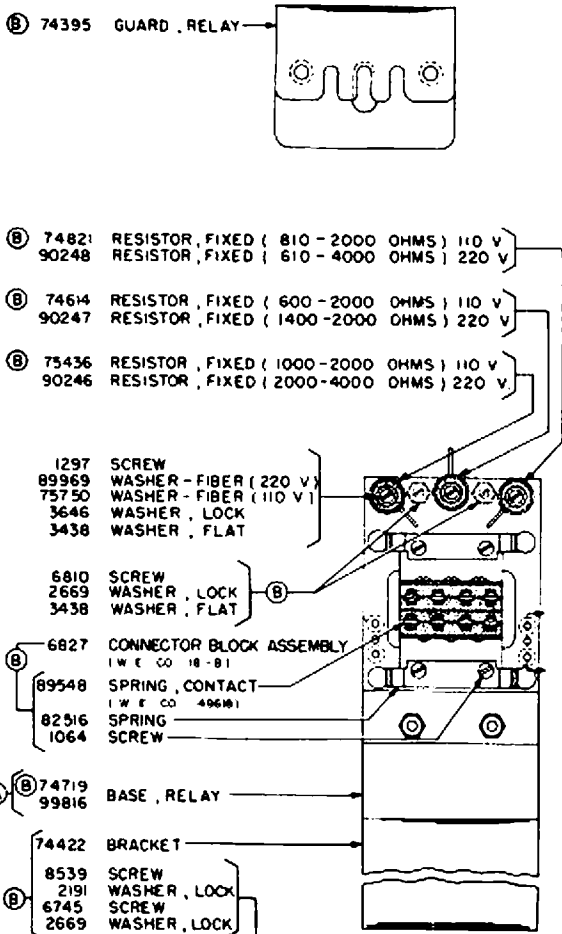
BASE

ORIGINAL

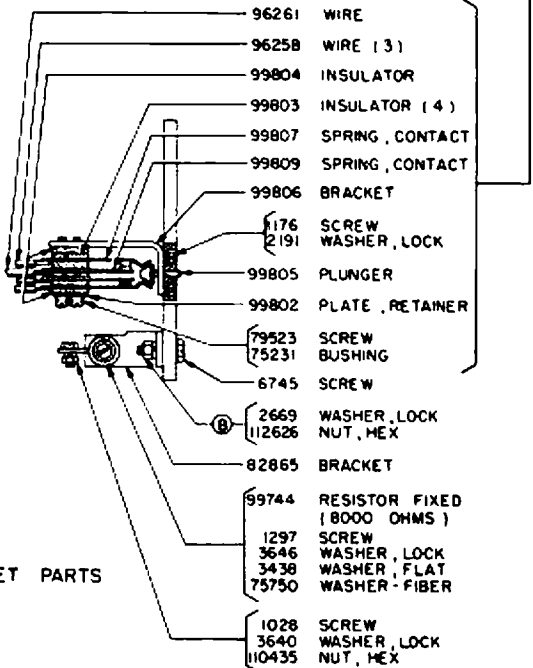
I1



107269 POLAR-NEUTRAL TOGGLE SWITCH
(EXCLUDES MOUNTING PARTS)



99745 LINE AND SELECTOR CLOSING JACK ASSEMBLY



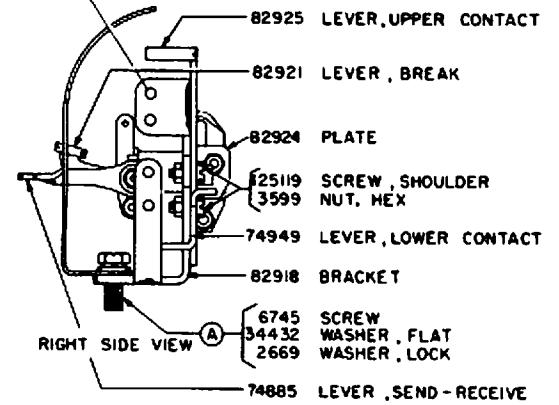
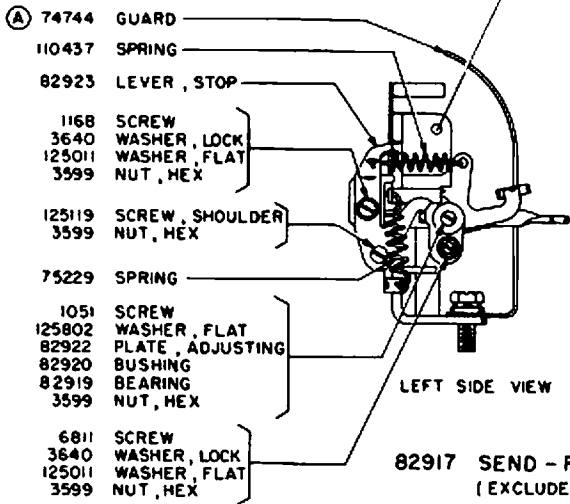
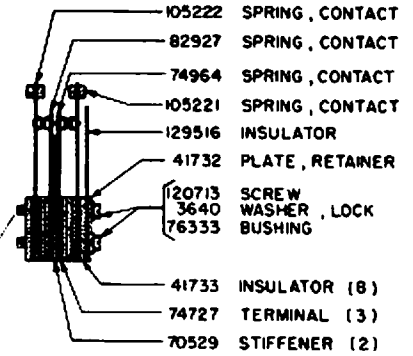
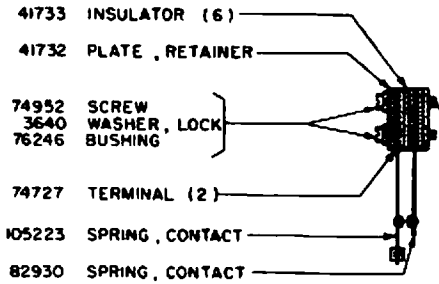
LINE RELAY BRACKET PARTS

74575 CABLE, LINE RELAY

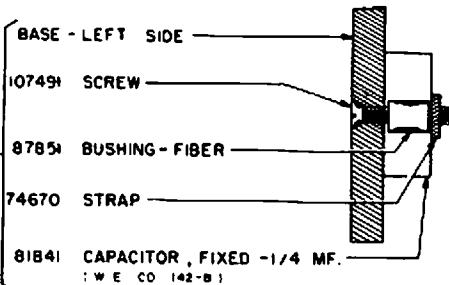
(B) 91789 CABLE, LINE RELAY

(A) SEE SEC III FOR EXPLANATION

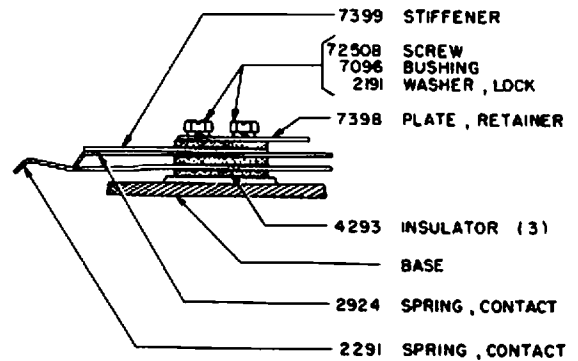
(B) 91786 SET OF PARTS FOR RELAY MOUNTING - .020 AMP. (INCLUDES ALL PARTS MARKED (B) ON THIS PAGE AND PAGE I-3)



82917 SEND - RECEIVE - BREAK MECHANISM
(EXCLUDES PARTS MARKED **(A)**)

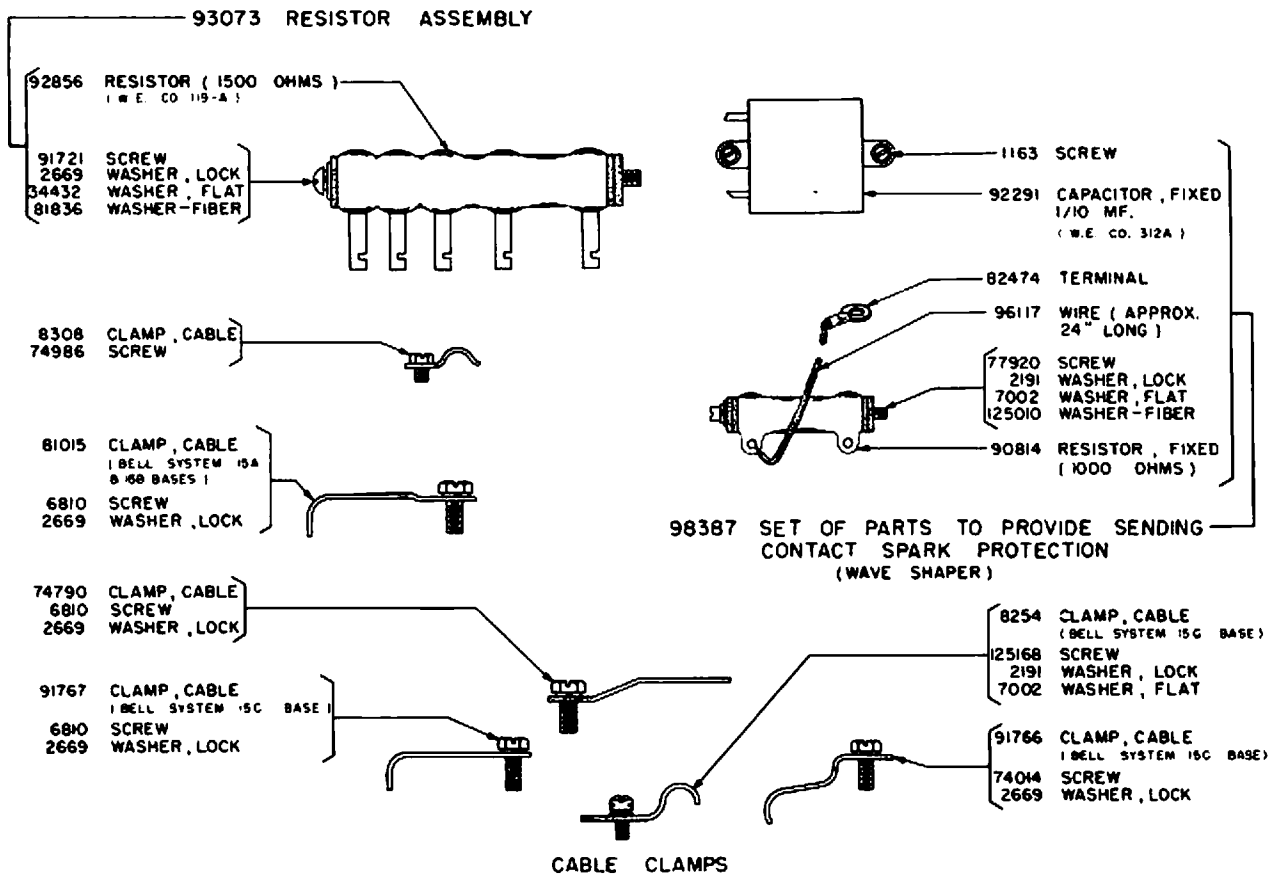
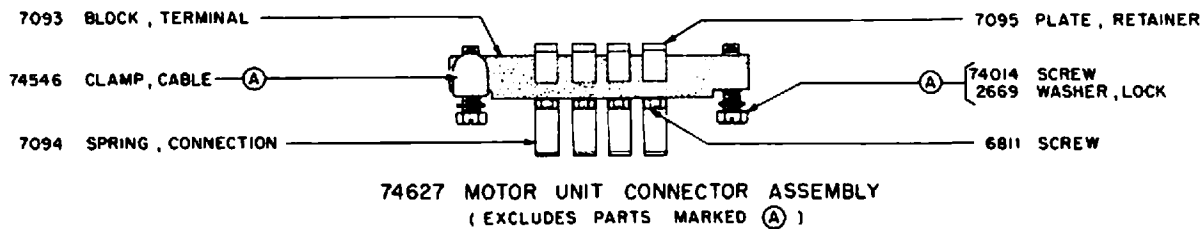
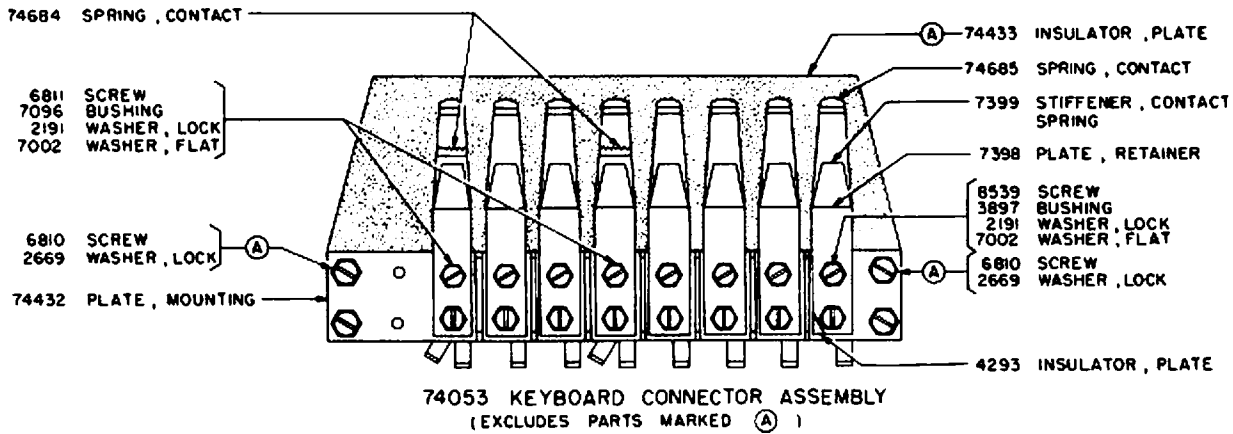


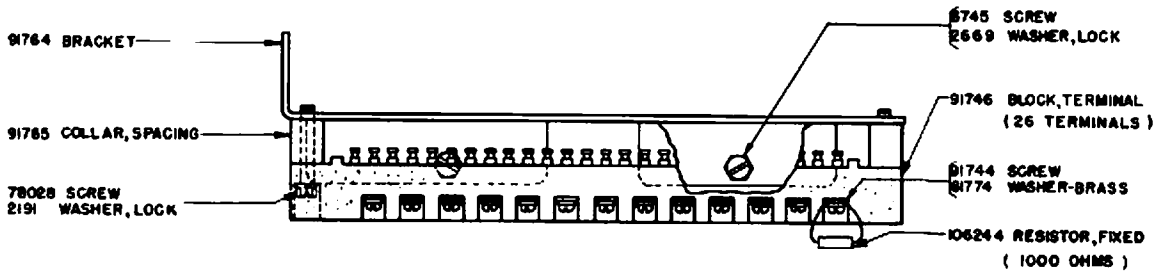
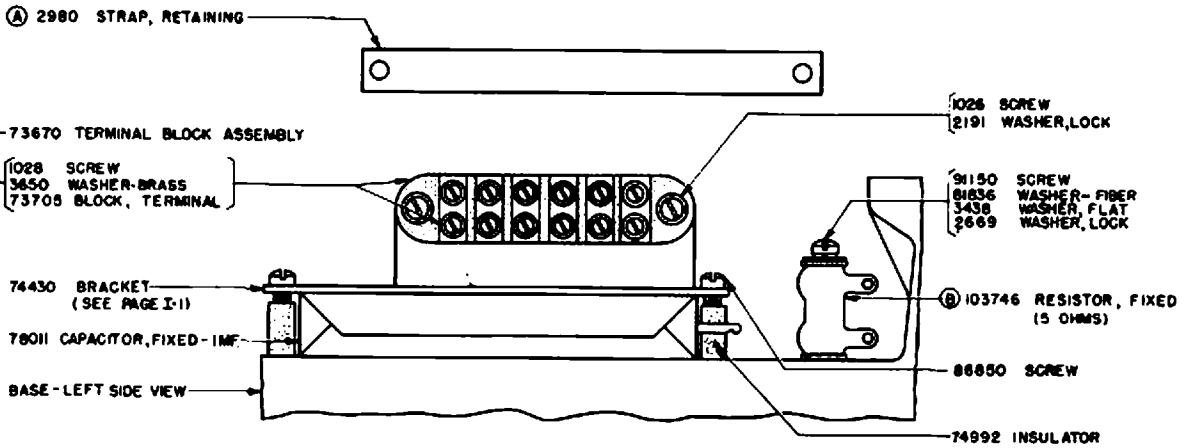
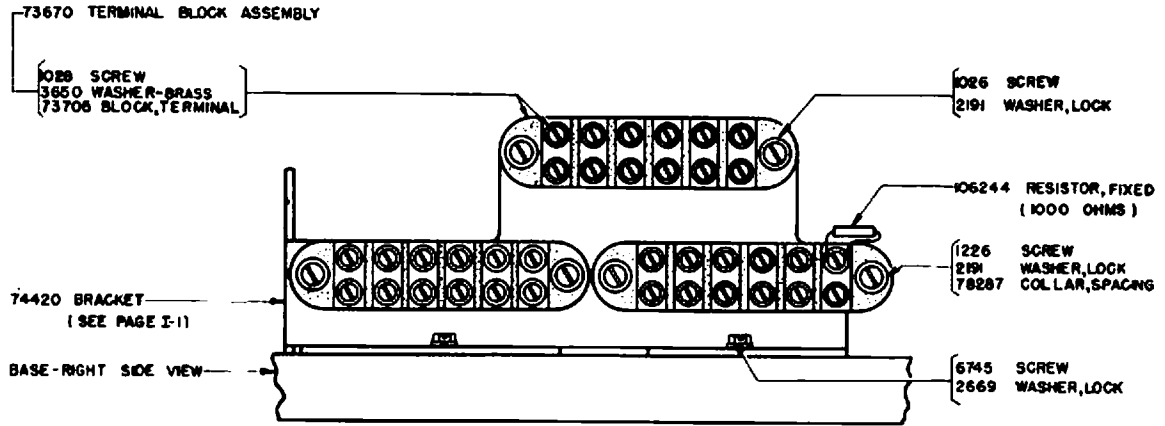
(B) 74817 LINE RELAY SPARK PROTECTION



LINE CLOSING CONTACTS

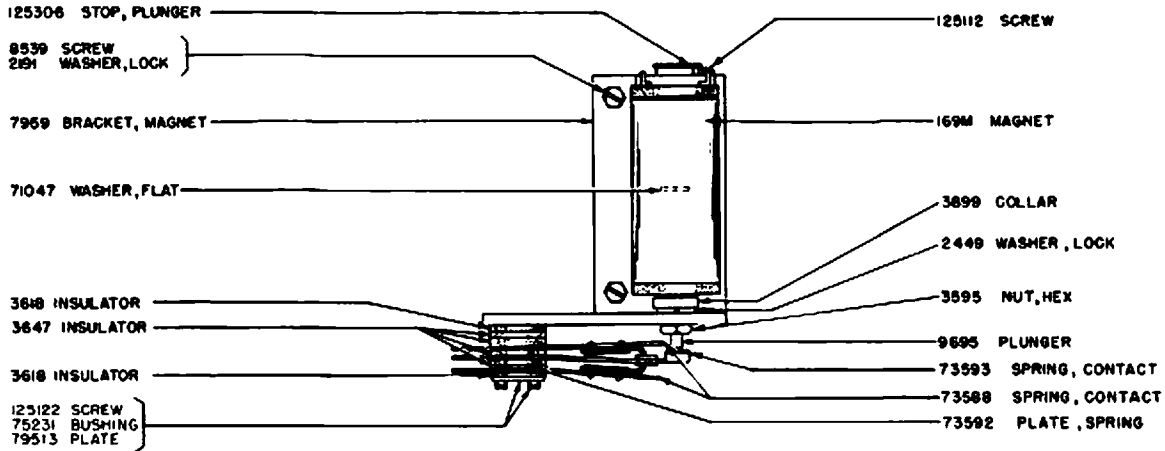
(B) SEE PAGE I-2 FOR EXPLANATION



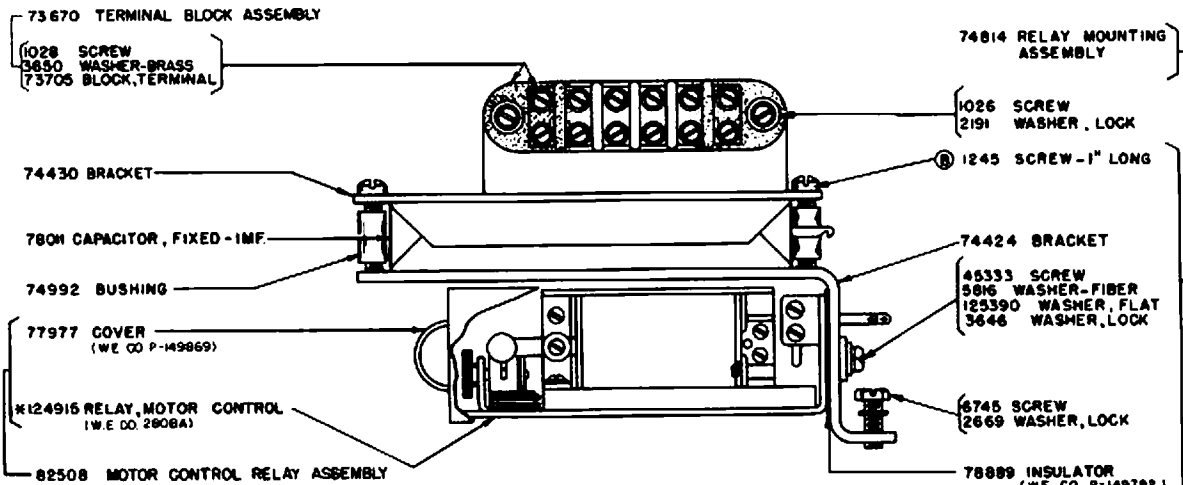


TERMINAL BLOCK PARTS

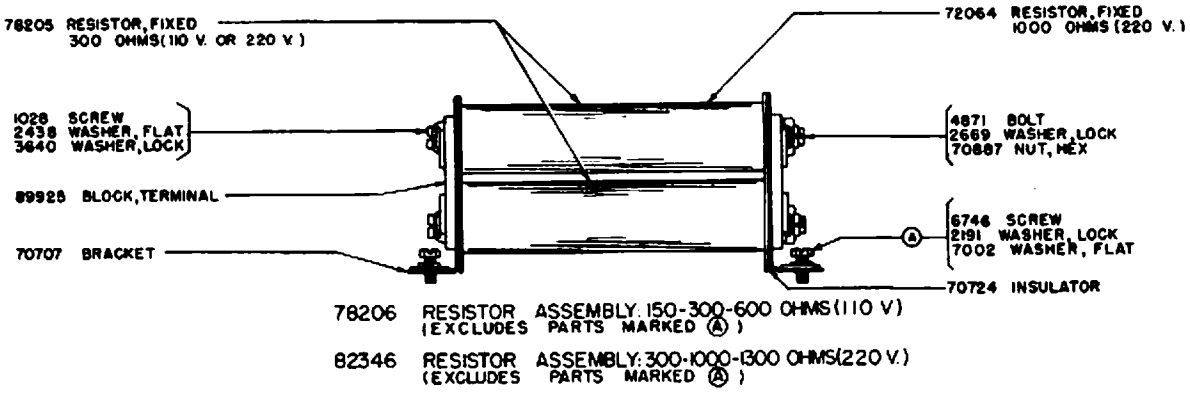
(A) & (B) SEE SEC. III FOR EXPLANATION



72484 MOTOR CONTROL RELAY

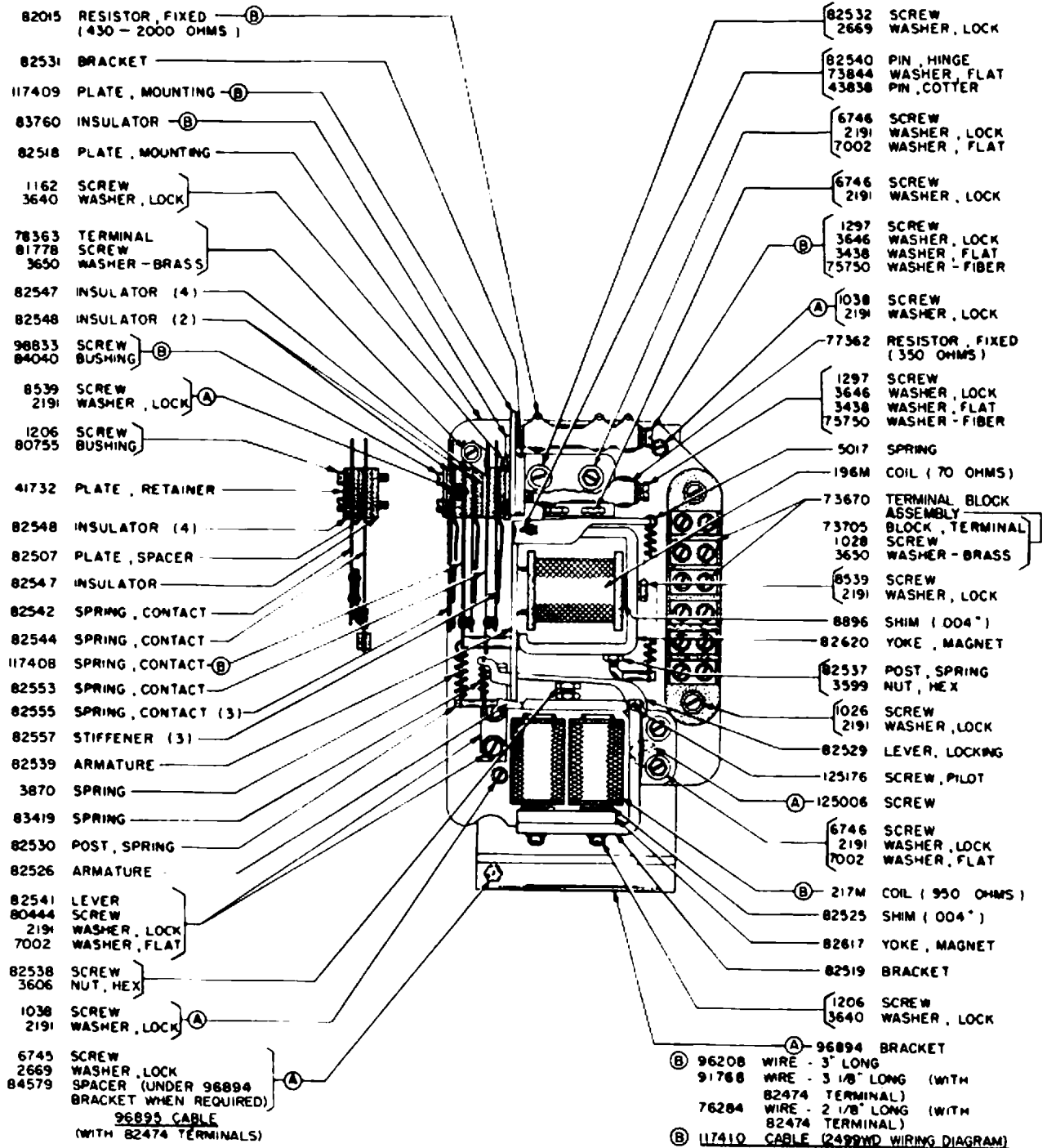


MOTOR CONTROL RELAY (POLARIZED)



* FORMERLY 72818 (W.E. CO. 2064M)

(B) SEE SEC. IX FOR EXPLANATION

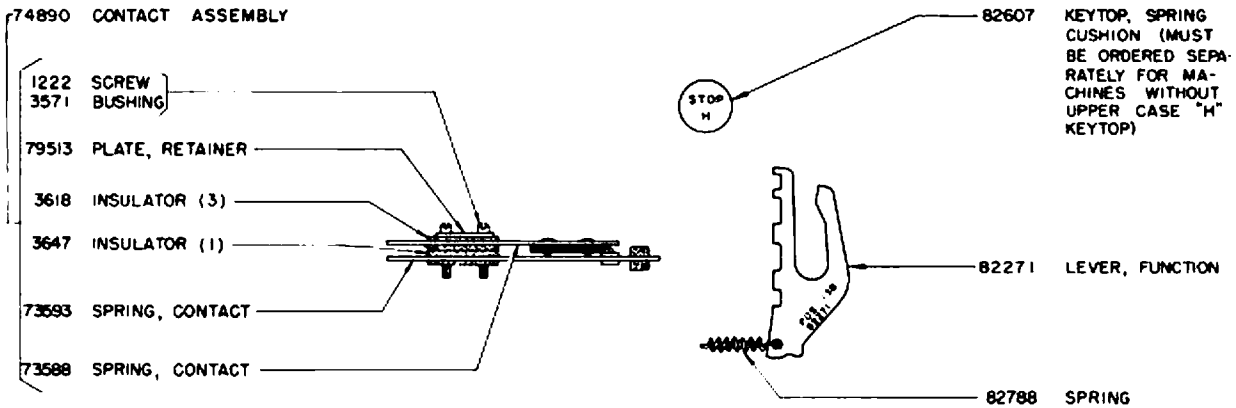


117746 SET OF PARTS FOR BASE

117745 SET OF PARTS TO PROVIDE ELECTRICAL MOTOR CONTROL ON UPPER CASE "H" (.020 AMP OR .060 AMP - POLAR OR NEUTRAL) NOT USED IN THE BELL SYSTEM

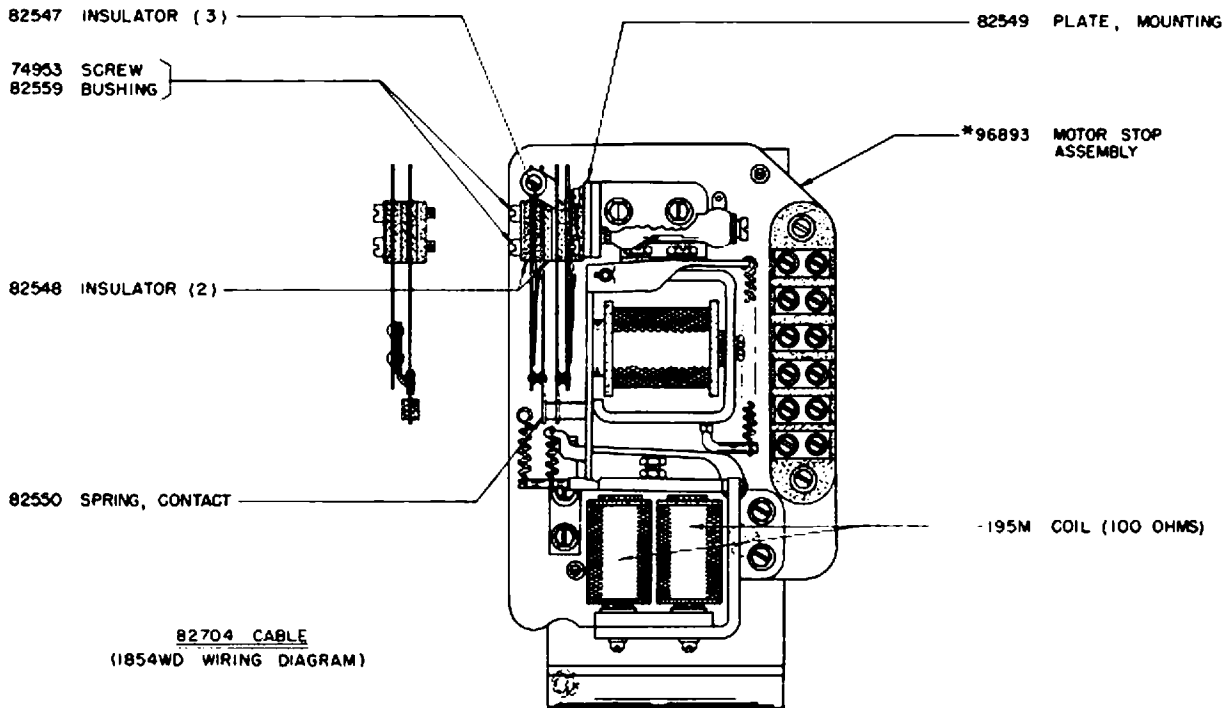
(97645 SET OF PARTS FOR TYPING UNIT (SHOWN ON PAGE I-8)
*117746 SET OF PARTS FOR BASE (SHOWN ABOVE)

*THE 117746 SET OF PARTS INCLUDES A 117747 MOTOR STOP ASSEMBLY CONSISTING OF THE PARTS LISTED ABOVE, INCLUDING PARTS MARKED (B) AND EXCLUDING PARTS MARKED (A)



82633 CABLE

97645 SET OF PARTS FOR TYPING UNIT

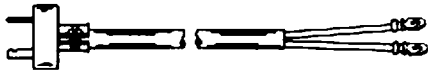


97646 SET OF PARTS FOR BASE
(PARTS SHOWN BUT NOT LISTED ARE THE SAME AS ON PAGE I-7)

96892 SET OF PARTS TO PROVIDE ELECTRICAL MOTOR CONTROL ON UPPER CASE "H" (.060 AMP. - POLAR OR NEUTRAL)

97645 SET OF PARTS FOR TYPING UNIT
*97646 SET OF PARTS FOR BASE

*THE 97646 SET OF PARTS INCLUDES A 96893 MOTOR STOP ASSEMBLY CONSISTING OF THE PARTS LISTED ABOVE AND ON PAGE I-7, EXCLUDING PARTS MARKED (A) AND (B)



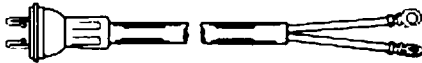
74853 CORD, POWER

APPROXIMATELY 28 1/2 INCHES LONG, INCLUDES
72481 PLUG (2 PRONGS) AND 82474
TERMINALS.



89317 CORD, LINE

APPROXIMATELY 35 INCHES LONG, INCLUDES
73497 PLUG - RED (W.E. CO 347A)
AND 82474 TERMINALS



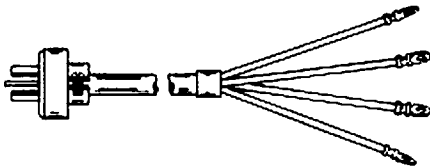
89469 CORD, POWER

APPROXIMATELY 40 INCHES LONG, INCLUDES
92854 PLUG (2 PRONGS) AND 82474
TERMINALS



8811 CORD, LINE

APPROXIMATELY 59 INCHES LONG, INCLUDES
73497 PLUG - RED (W.E. CO 347A)
AND 82474 TERMINALS.



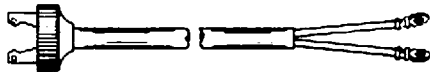
95050 CORD, POWER

APPROXIMATELY 40 INCHES LONG, INCLUDES
95063 PLUG (3 PRONGS) AND 82474
TERMINALS



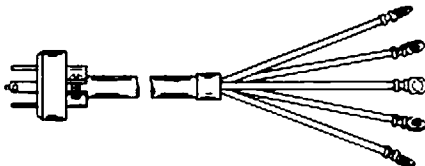
89472 CORD, LINE

APPROXIMATELY 41 INCHES LONG, INCLUDES
73497 PLUG - RED (W.E. CO 347A)
AND 102100 TERMINALS



8809 CORD, POWER

APPROXIMATELY 63 INCHES LONG, INCLUDES
125457 PLUG (2 PRONGS) AND 82474
TERMINALS.



95052 CORD, POWER

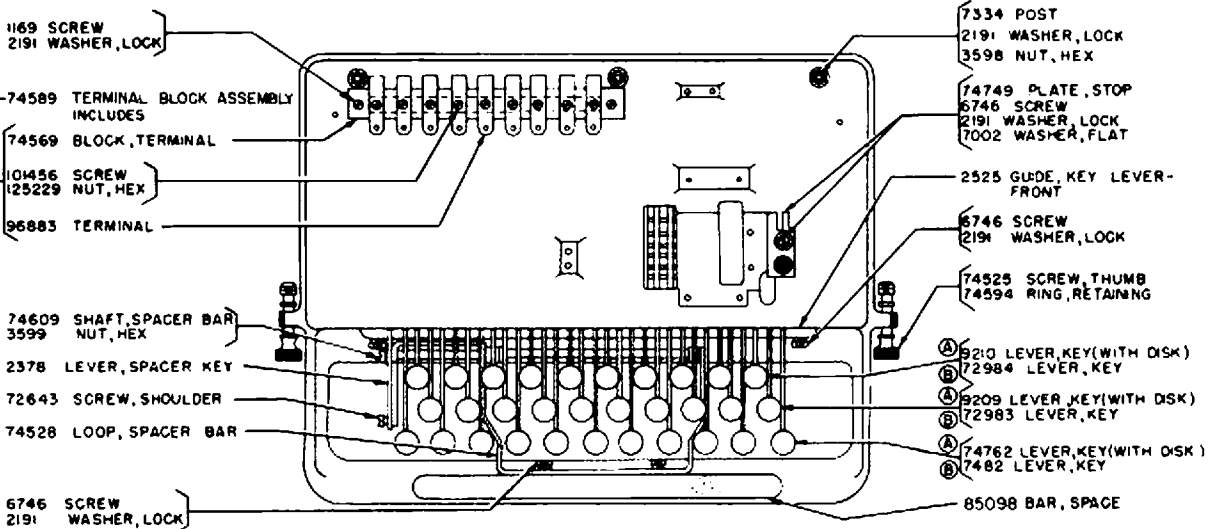
APPROXIMATELY 40 INCHES LONG, INCLUDES
95064 PLUG (4 PRONGS) AND 82474
TERMINALS.



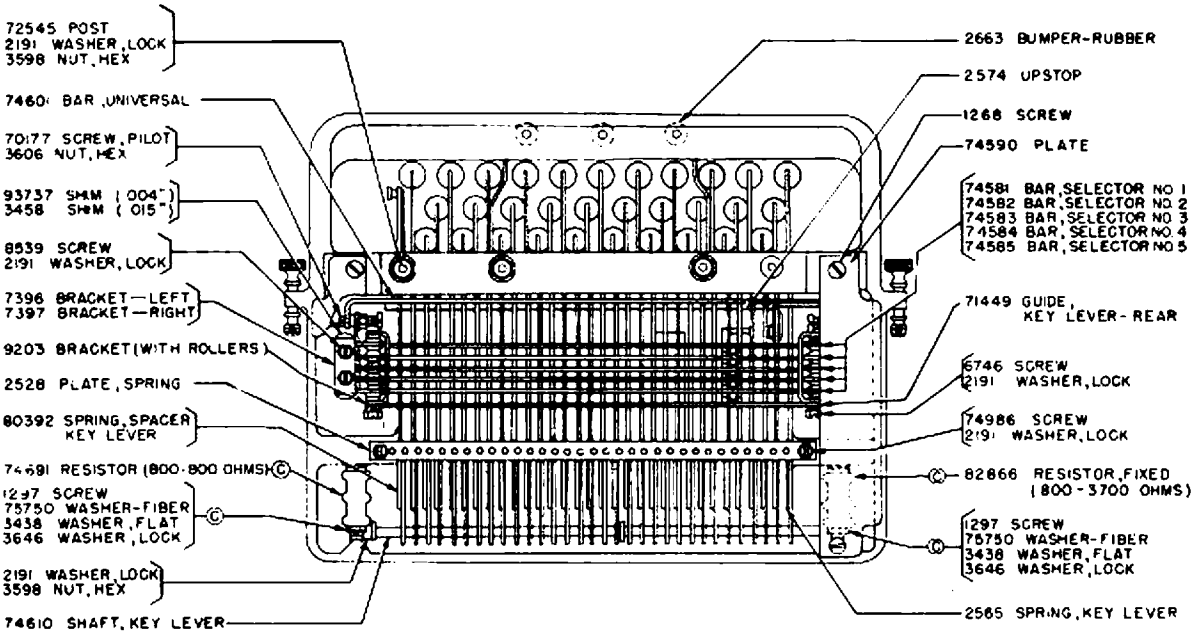
89438 CORD, LINE

APPROXIMATELY 41 INCHES LONG, INCLUDES
103236 PLUG - BLACK AND 102100 TERMINALS

POWER AND LINE CORD ASSEMBLIES



TOP VIEW



BOTTOM VIEW

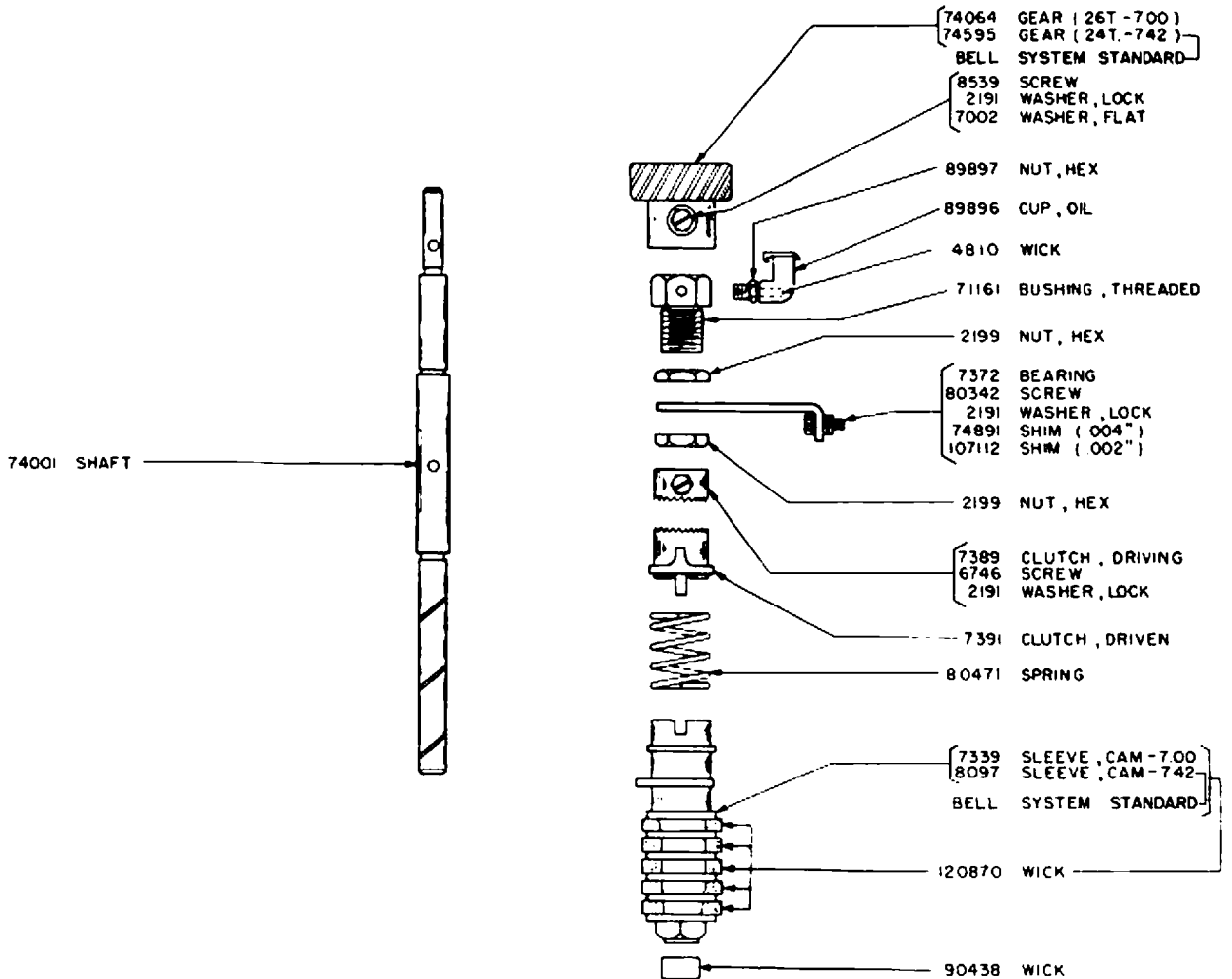
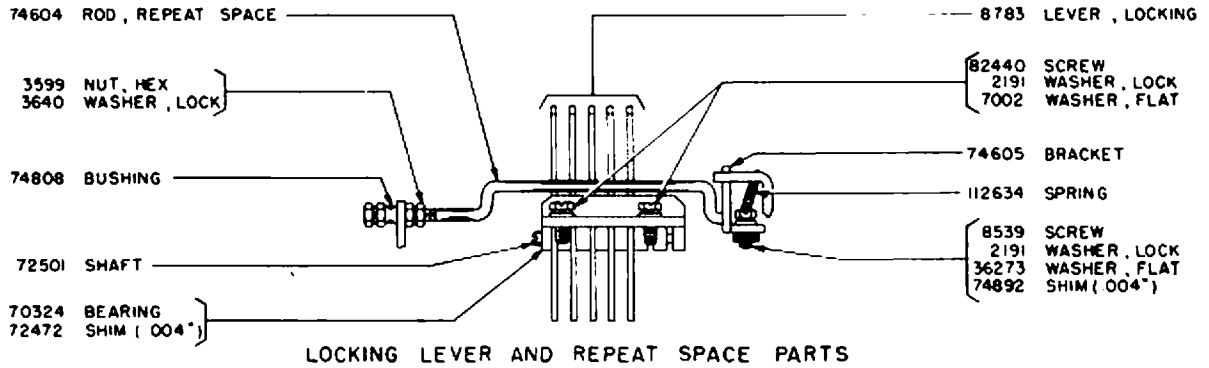
KEYBOARD

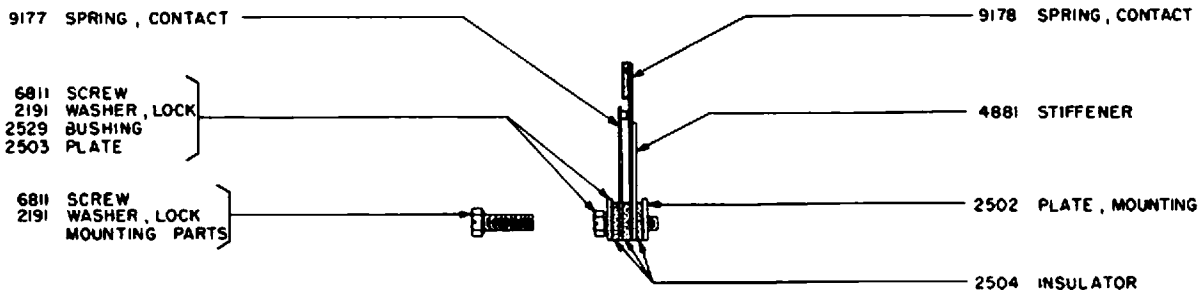
FOR KEYTOPS SEE CHART SHOWN ON PAGE I-38

(A) FOR SPRING CUSHION KEYTOPS

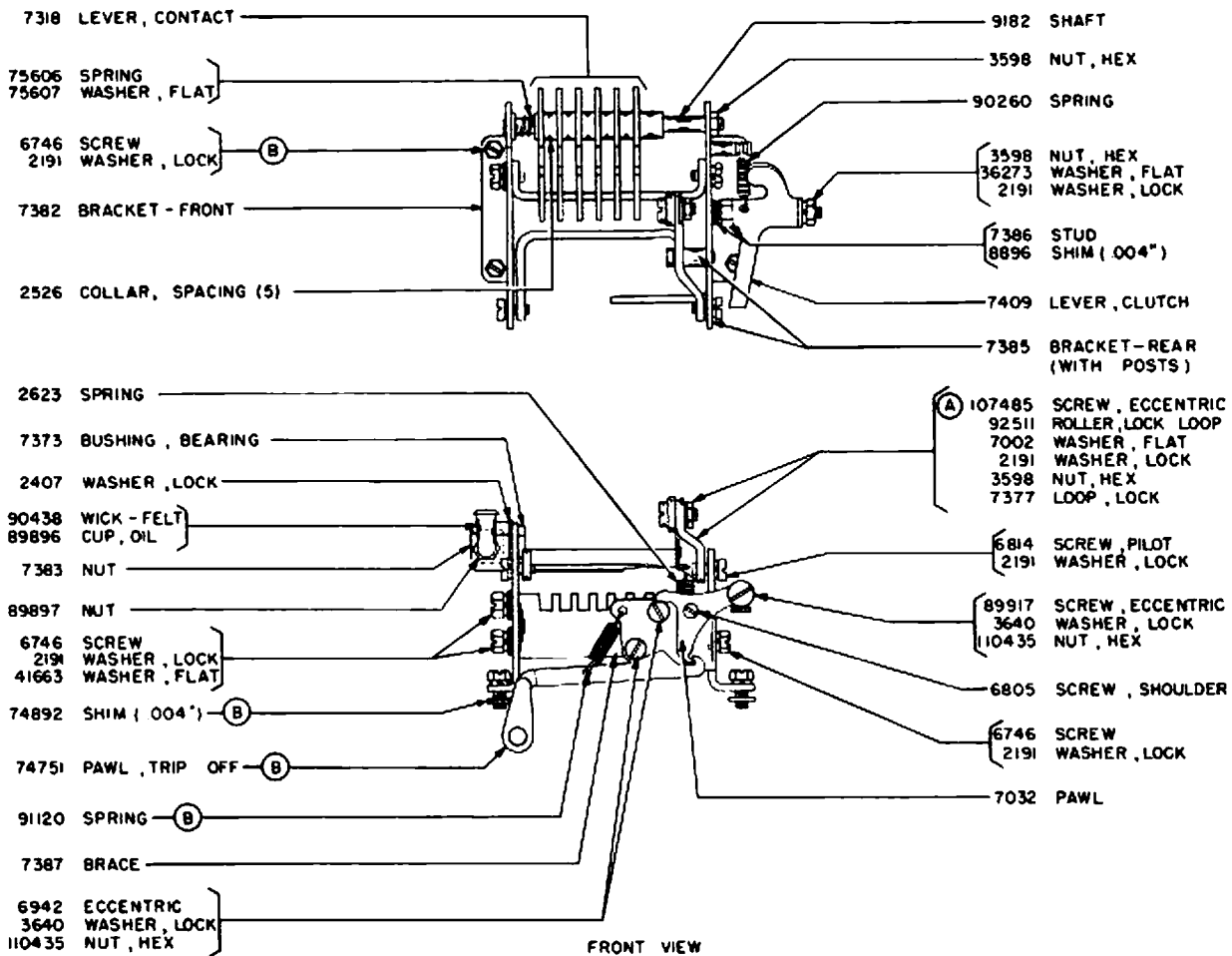
(B) FOR CELLULOID KEYTOPS

(C) PARTS ARE USED WITH LOCAL TEST KEY
(SEE PAGE I-13 FOR ADDITIONAL PARTS)



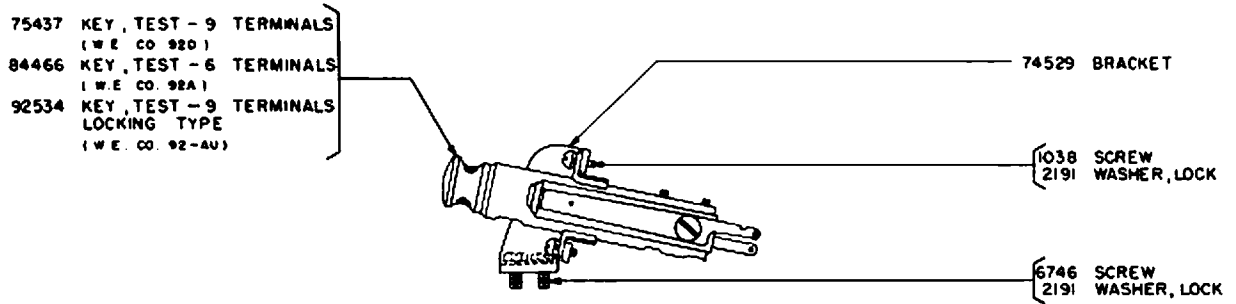


7381 CONTACT MOUNTING ASSEMBLY—LESS MOUNTING PARTS

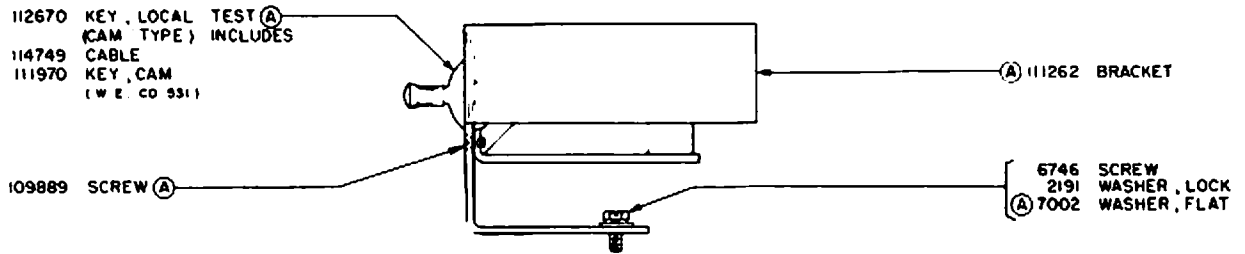


74690 TRANSMITTER MECHANISM (INCLUDES 7381 CONTACT MOUNTING ASSEMBLY)
(EXCLUDES PARTS MARKED (B))

(A) SEE SEC. III FOR EXPLANATION

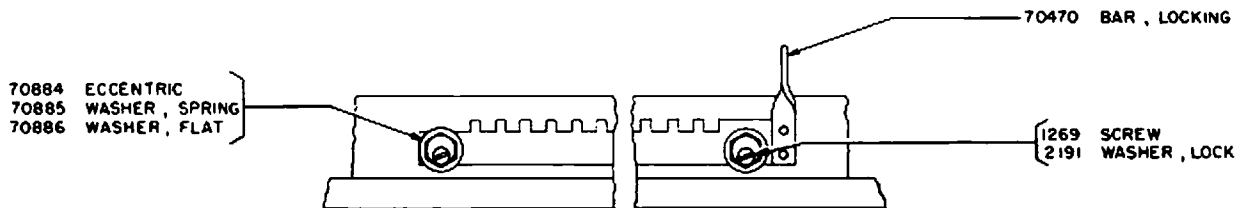


LINE TEST KEY - LOCKING AND NON-LOCKING (PUSH TYPE)



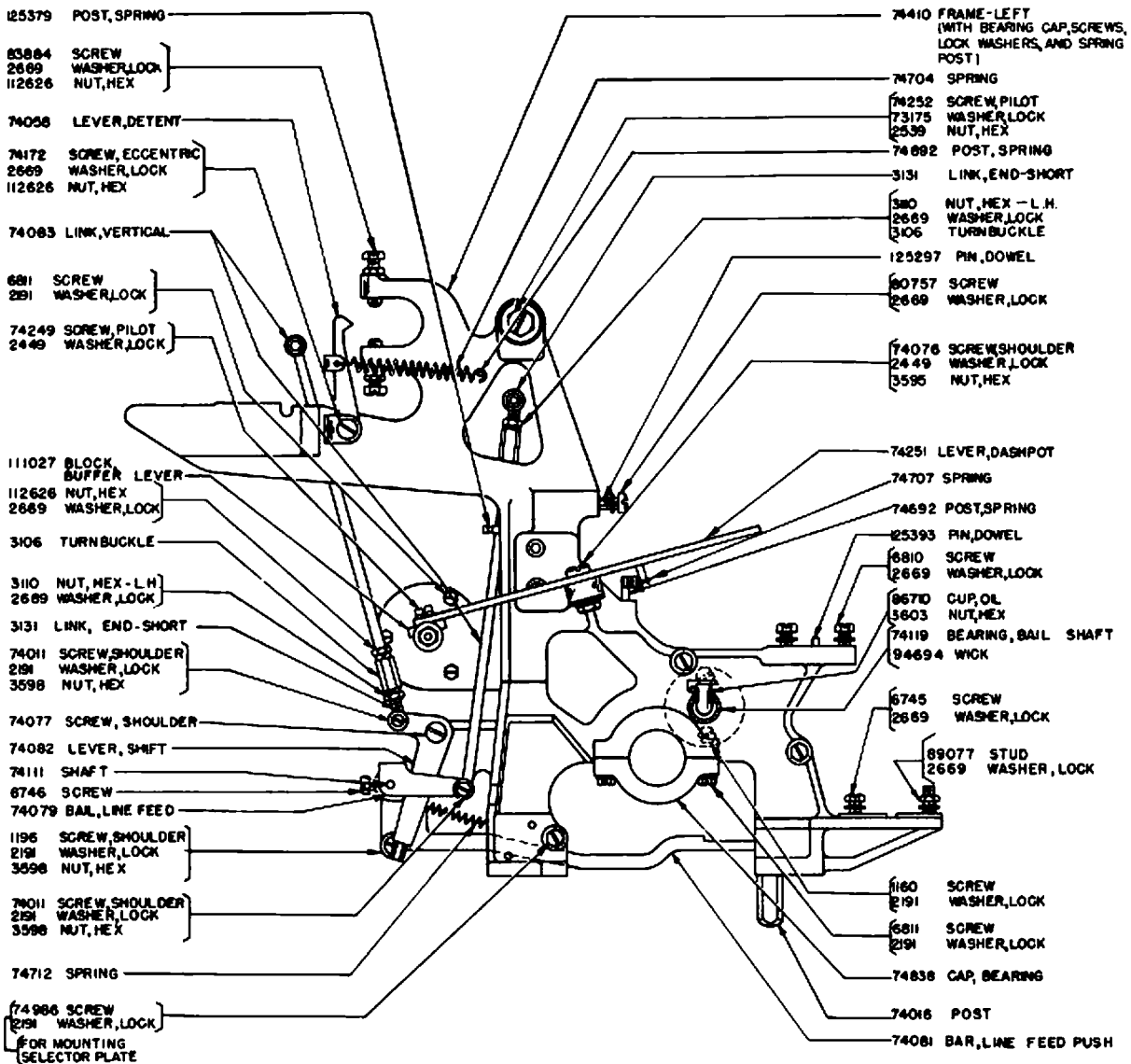
112549 SET OF PARTS TO PROVIDE LOCAL TEST ON KEYBOARD

(SEE PAGE I-10 FOR ADDITIONAL PARTS MARKED (C))

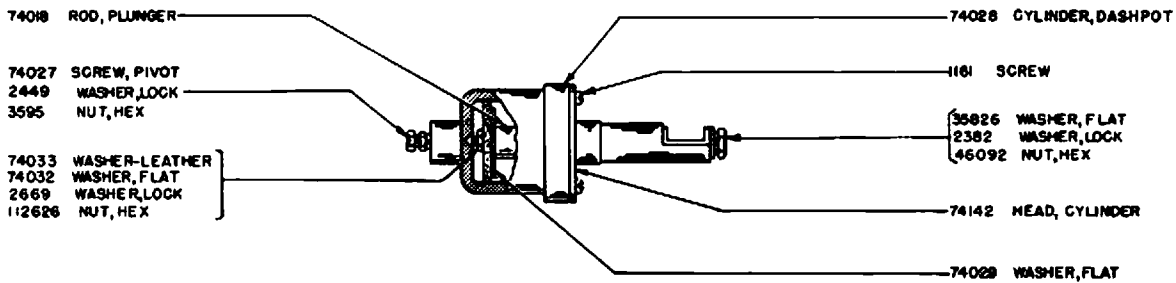


MANUAL KEYLEVER

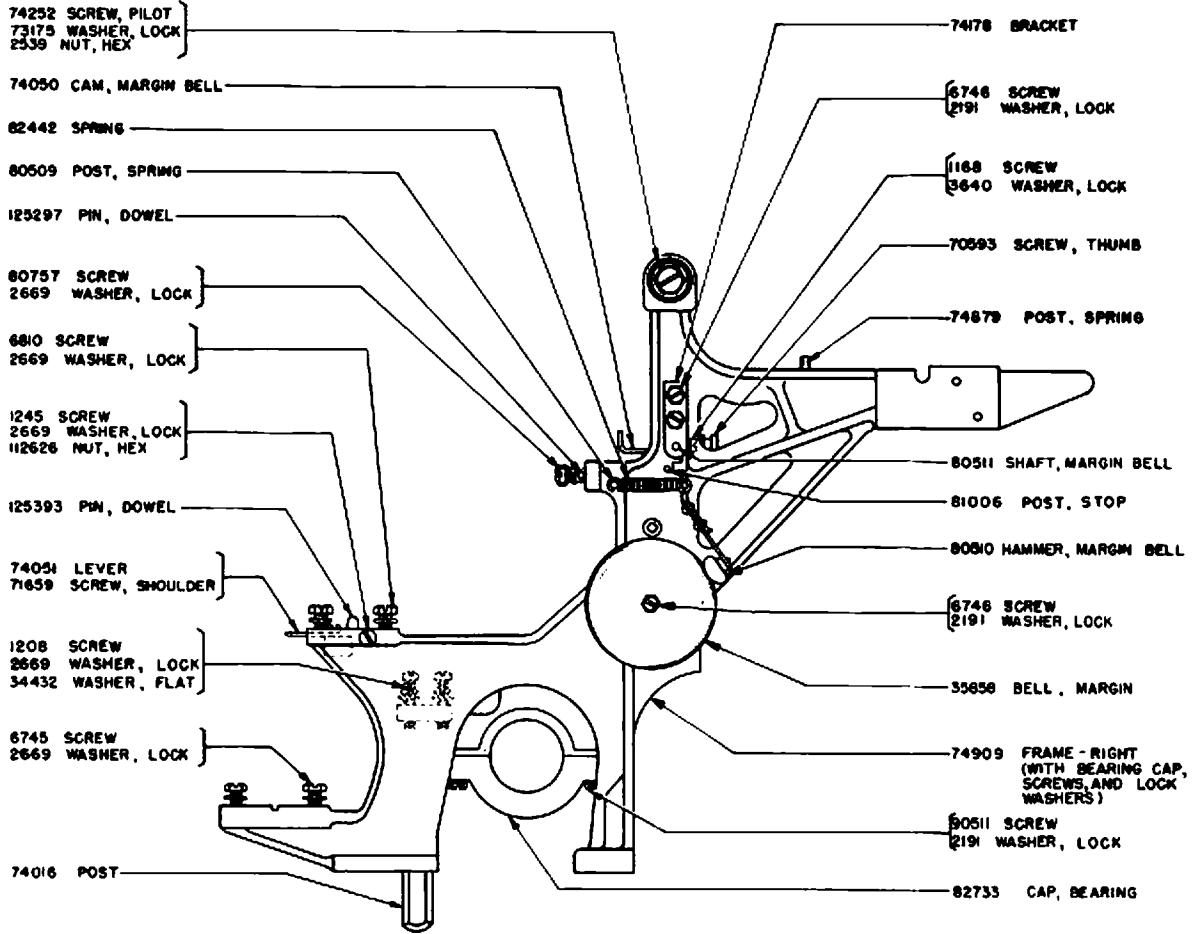
(A) 106938 SET OF PARTS TO CONVERT THE PUSH
TYPE TEST KEY TO THE CAM TYPE TEST KEY.



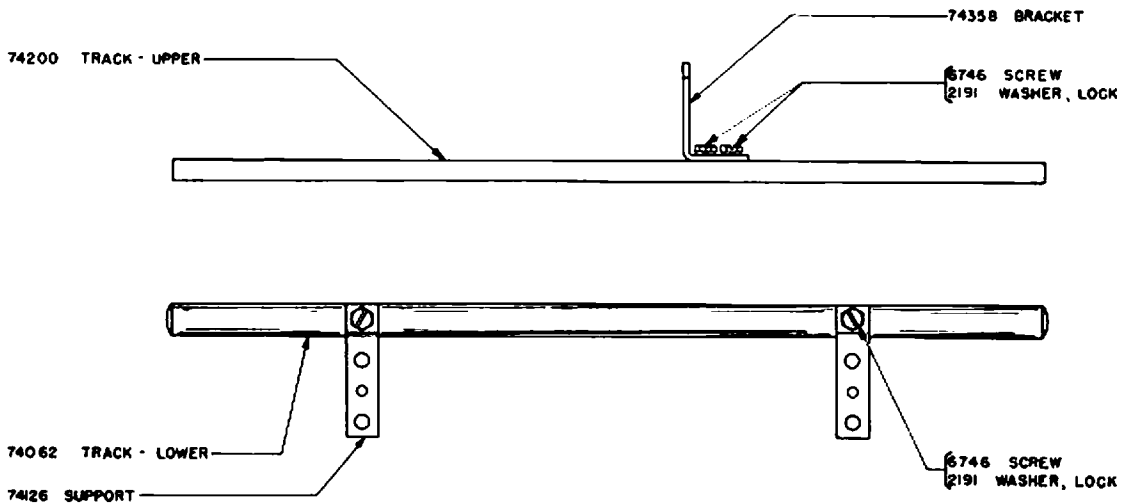
LEFT SIDE FRAME PARTS



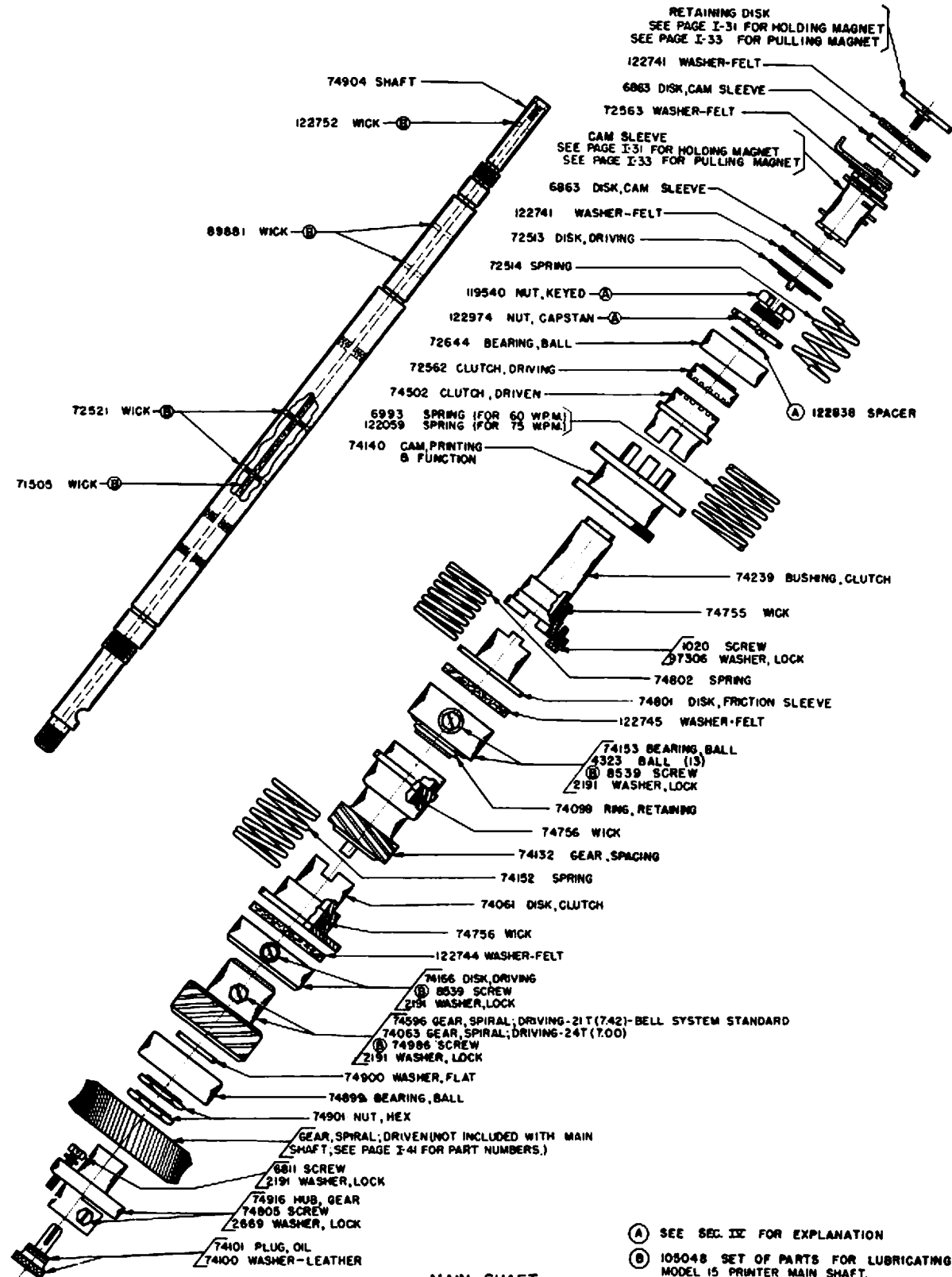
74282 DASHPOT ASSEMBLY



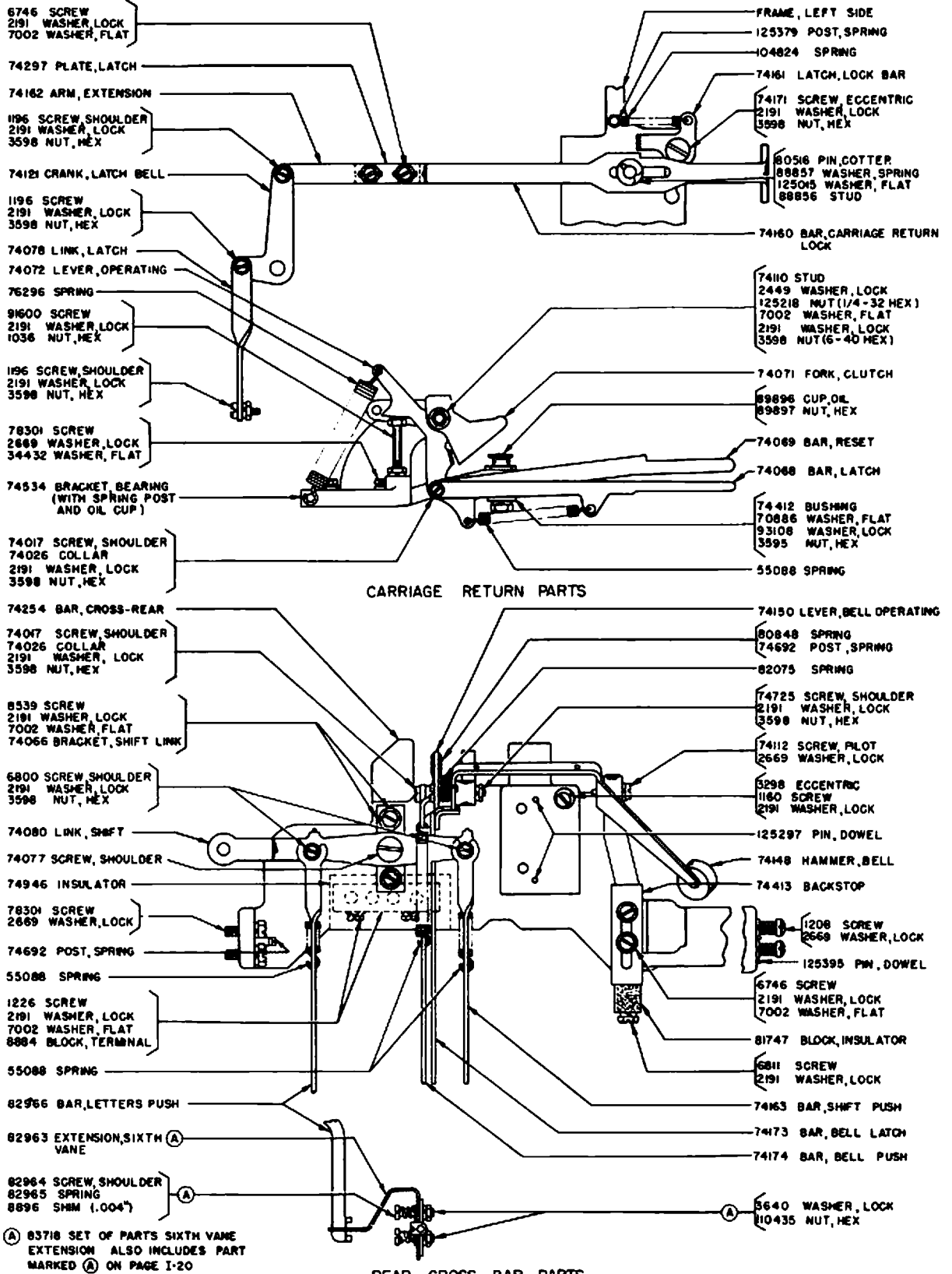
RIGHT SIDE FRAME PARTS

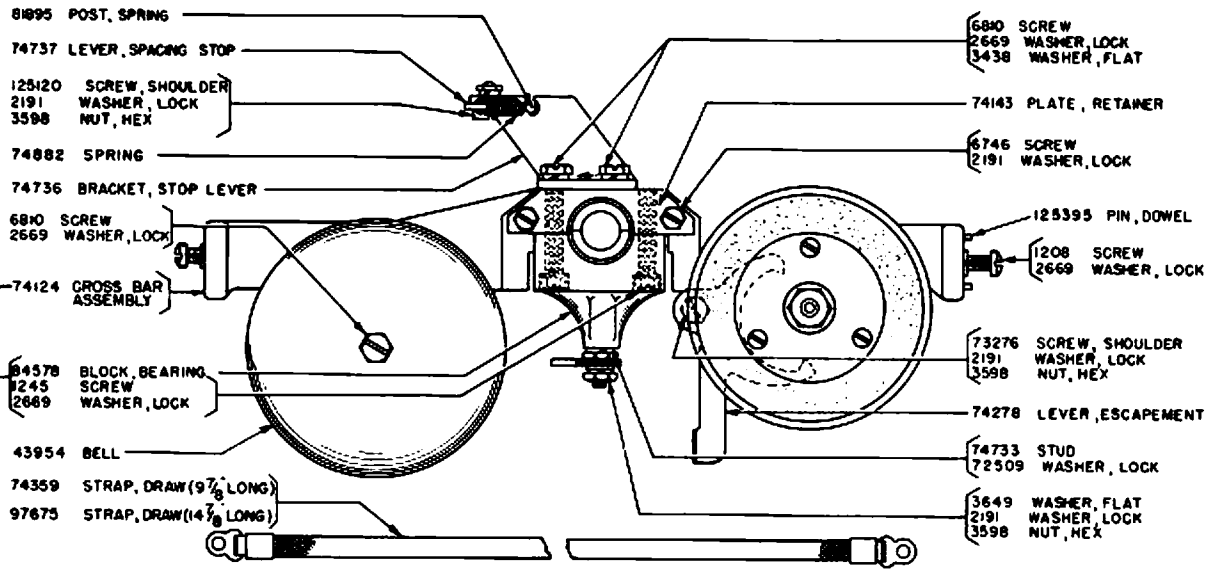


TYPE BAR CARRIAGE TRACKS

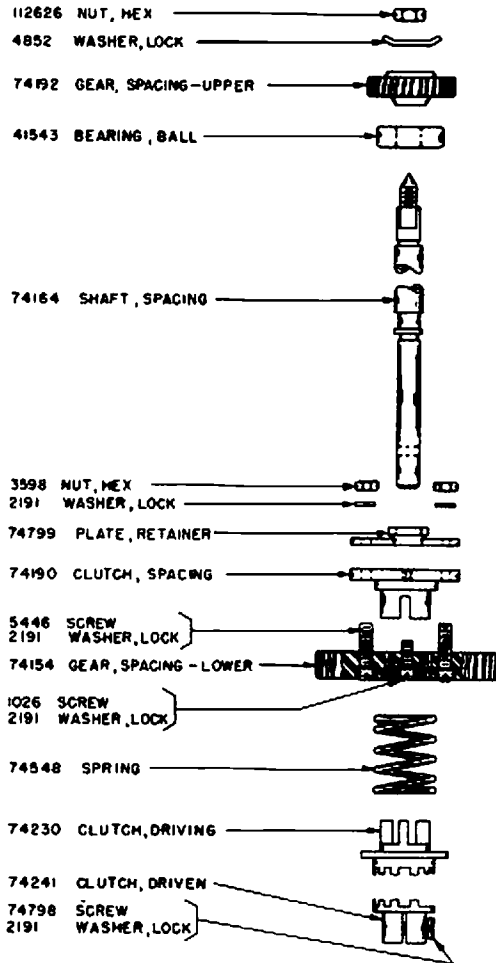


- (A) SEE SEC. IX FOR EXPLANATION
- (B) 105048 SET OF PARTS FOR LUBRICATING MODEL 15 PRINTER MAIN SHAFT.

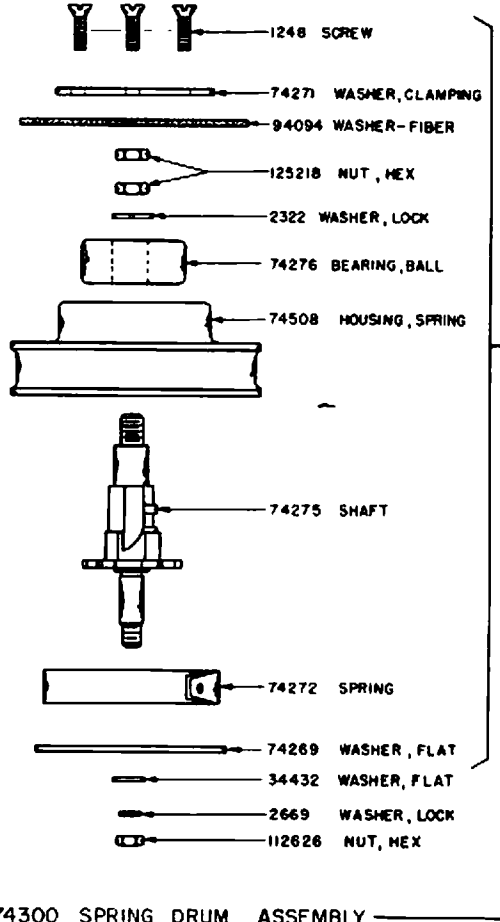




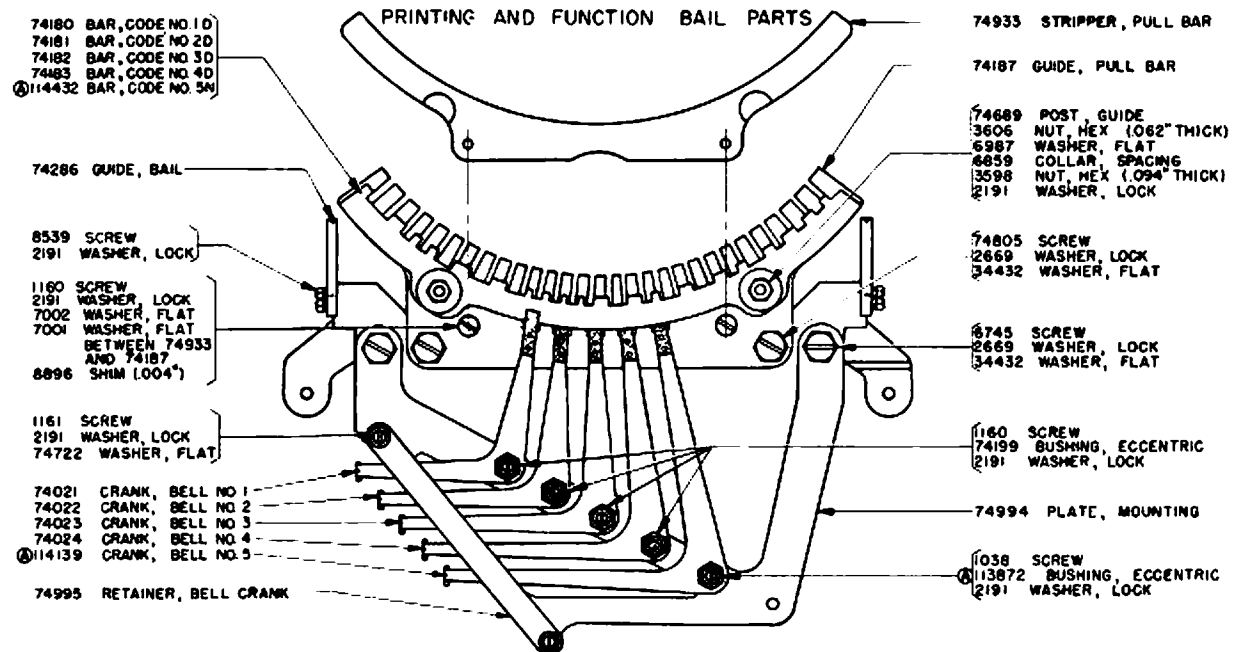
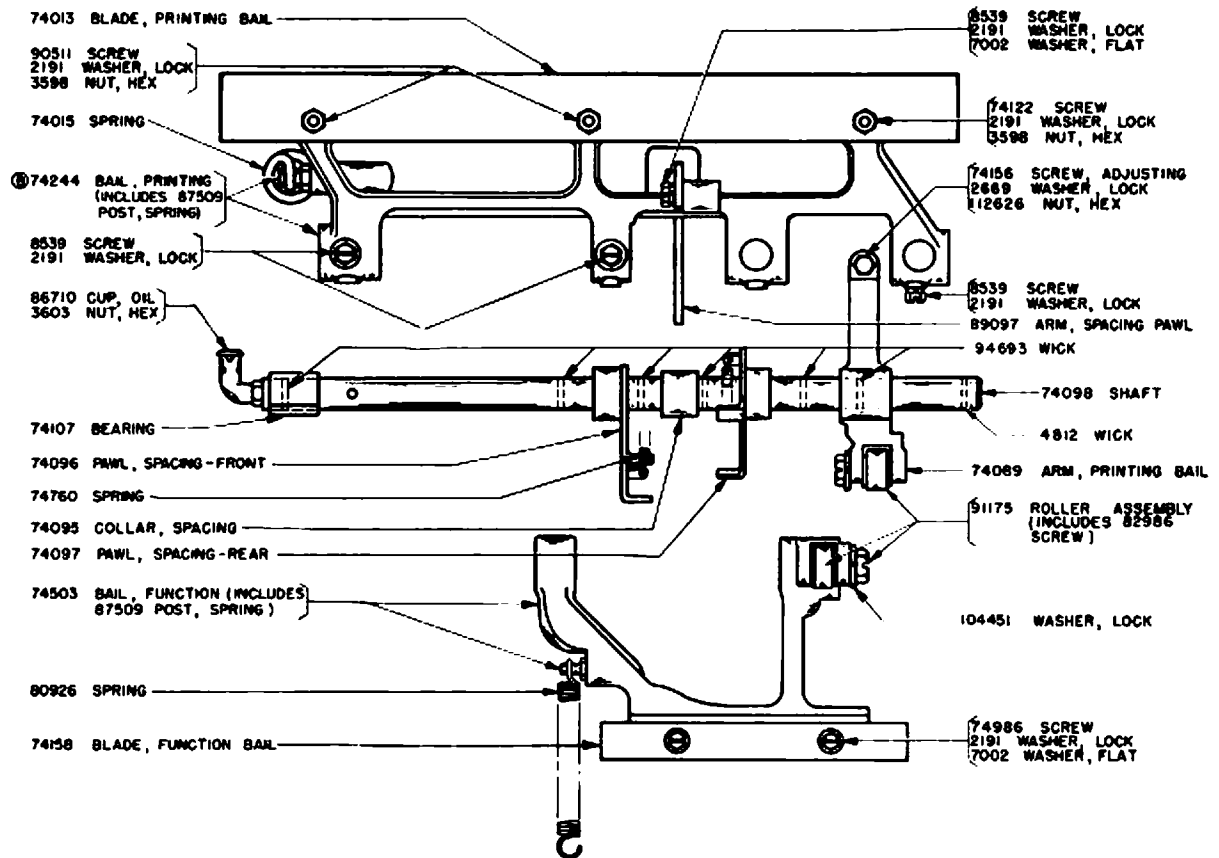
SPACING CROSS BAR PARTS



SPACING SHAFT PARTS

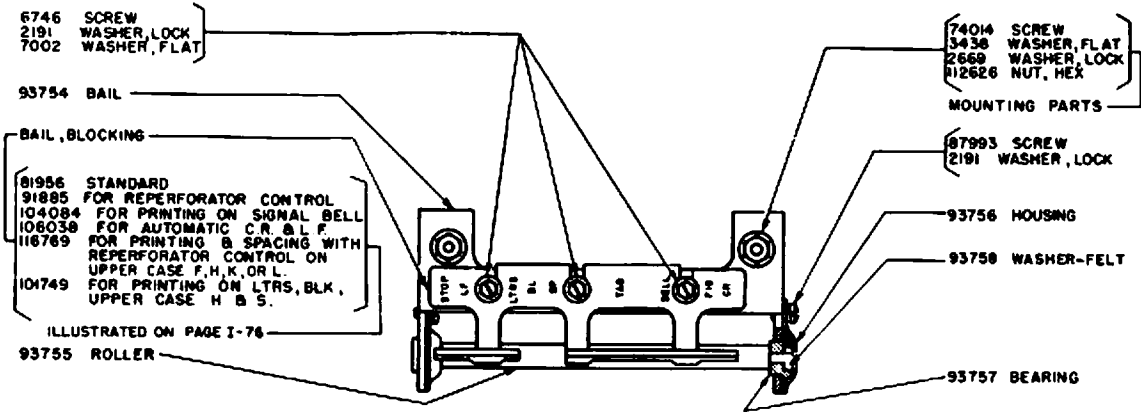


74300 SPRING DRUM ASSEMBLY

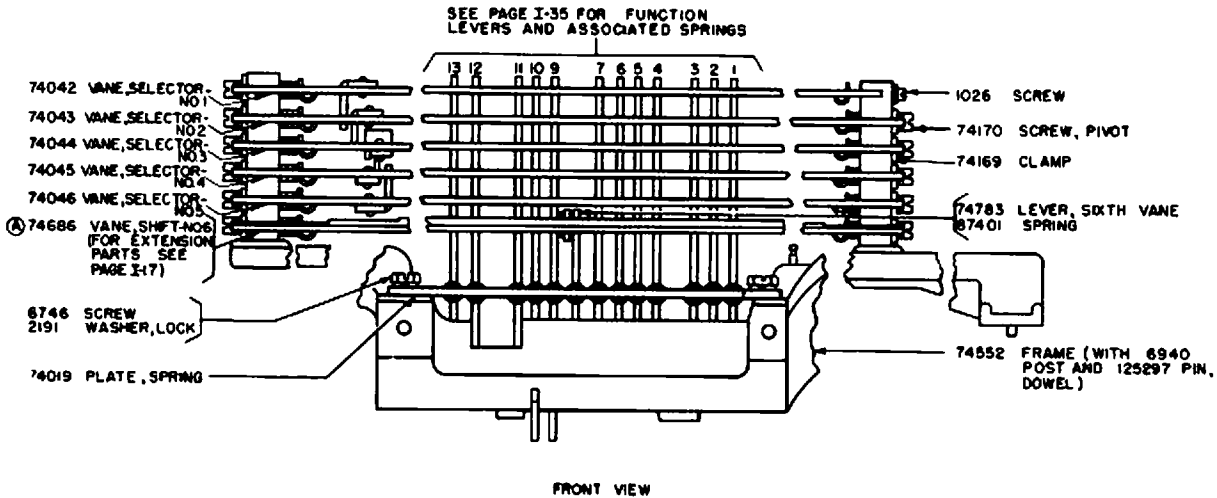


(A) (B) SEE SEC. IV FOR EXPLANATION

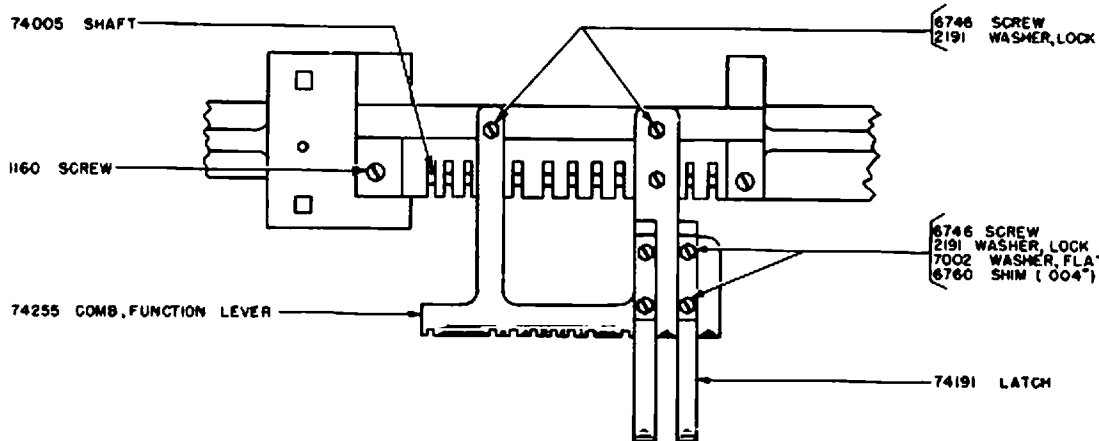
CODE BAR AND BELL CRANK PARTS



93839 FUNCTION LEVER BAIL ASSEMBLY - LESS MOUNTING PARTS
INCLUDES 81956 (STANDARD) BLCCKING BAIL



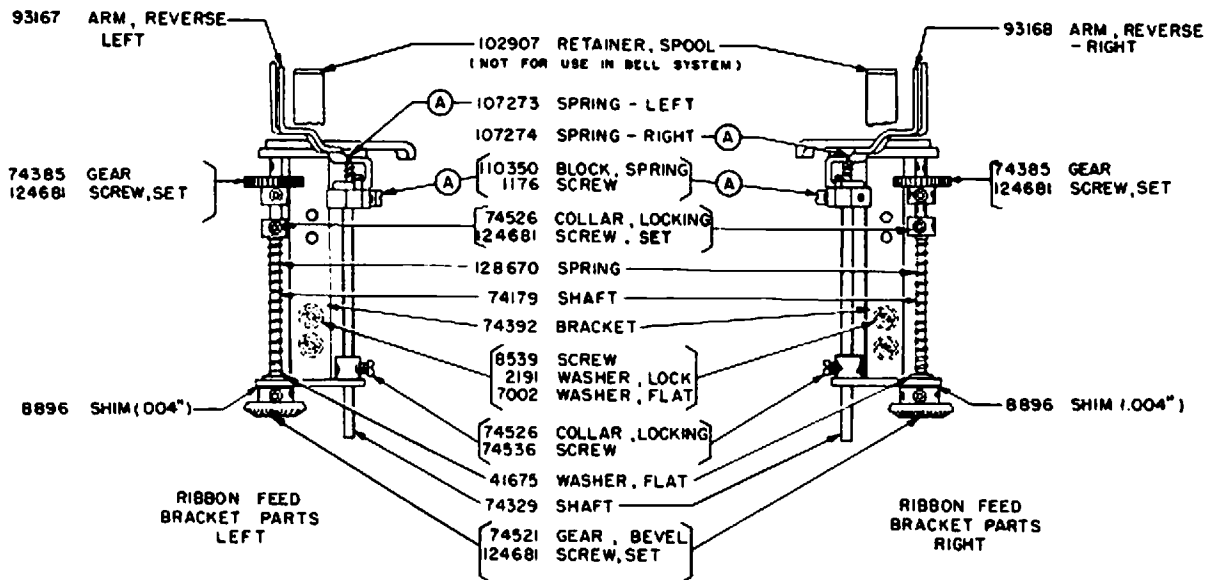
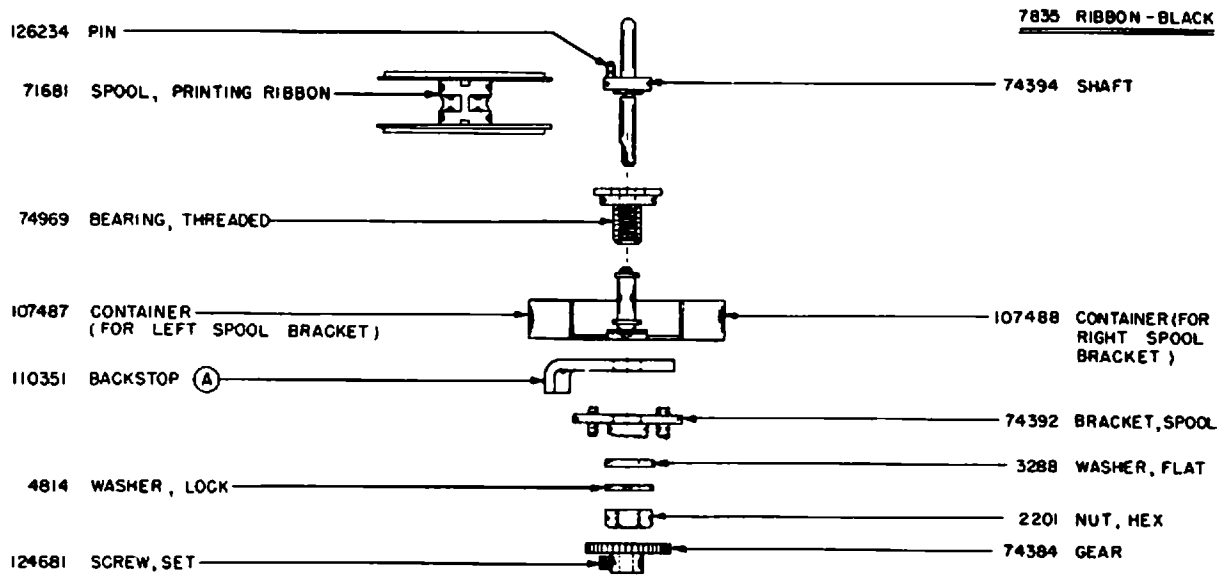
FRONT VIEW



BOTTOM VIEW

VANE FRAME

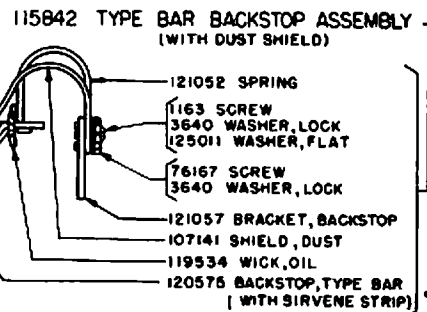
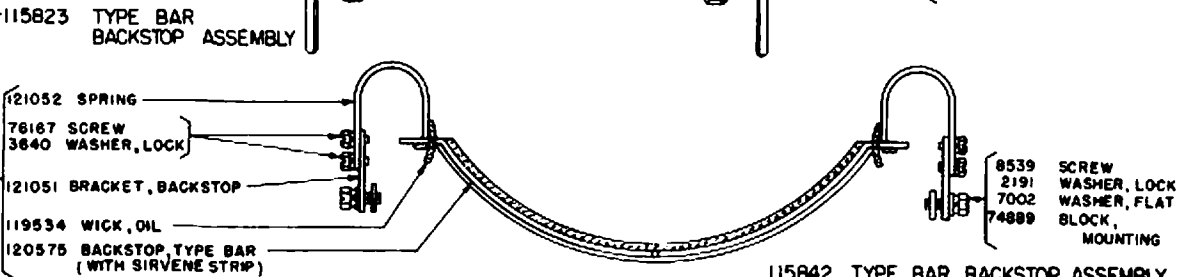
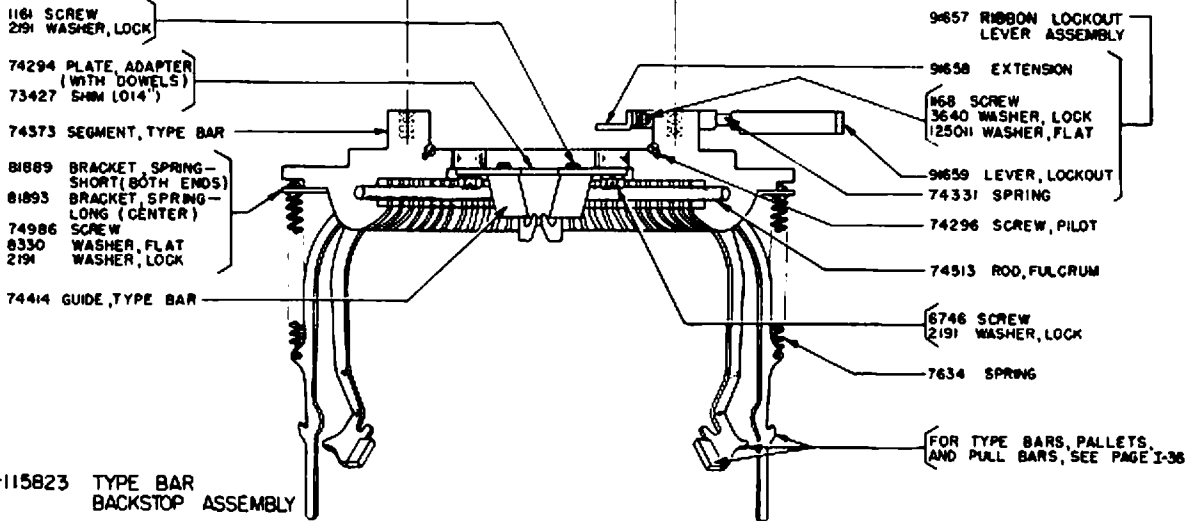
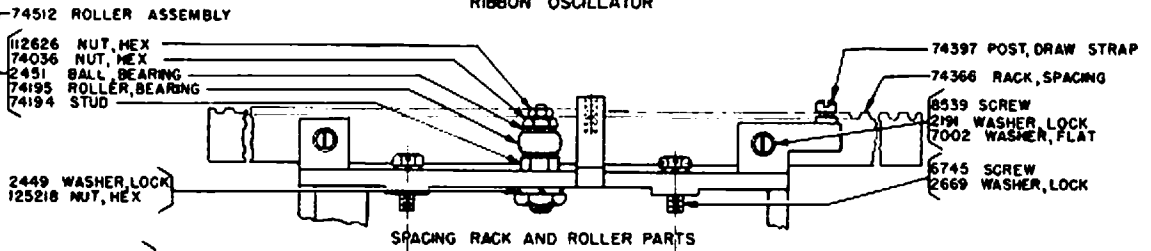
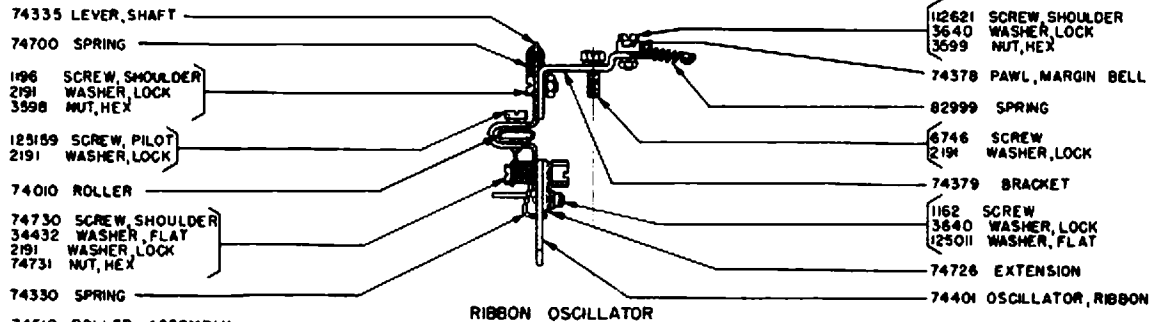
(A) SEE PAGE I-17 FOR EXPLANATION



PARTS MARKED (A) COMPRISE THE 110352 SET OF RIBBON REVERSE ARM, YIELD SPRING AND BACKSTOP PARTS

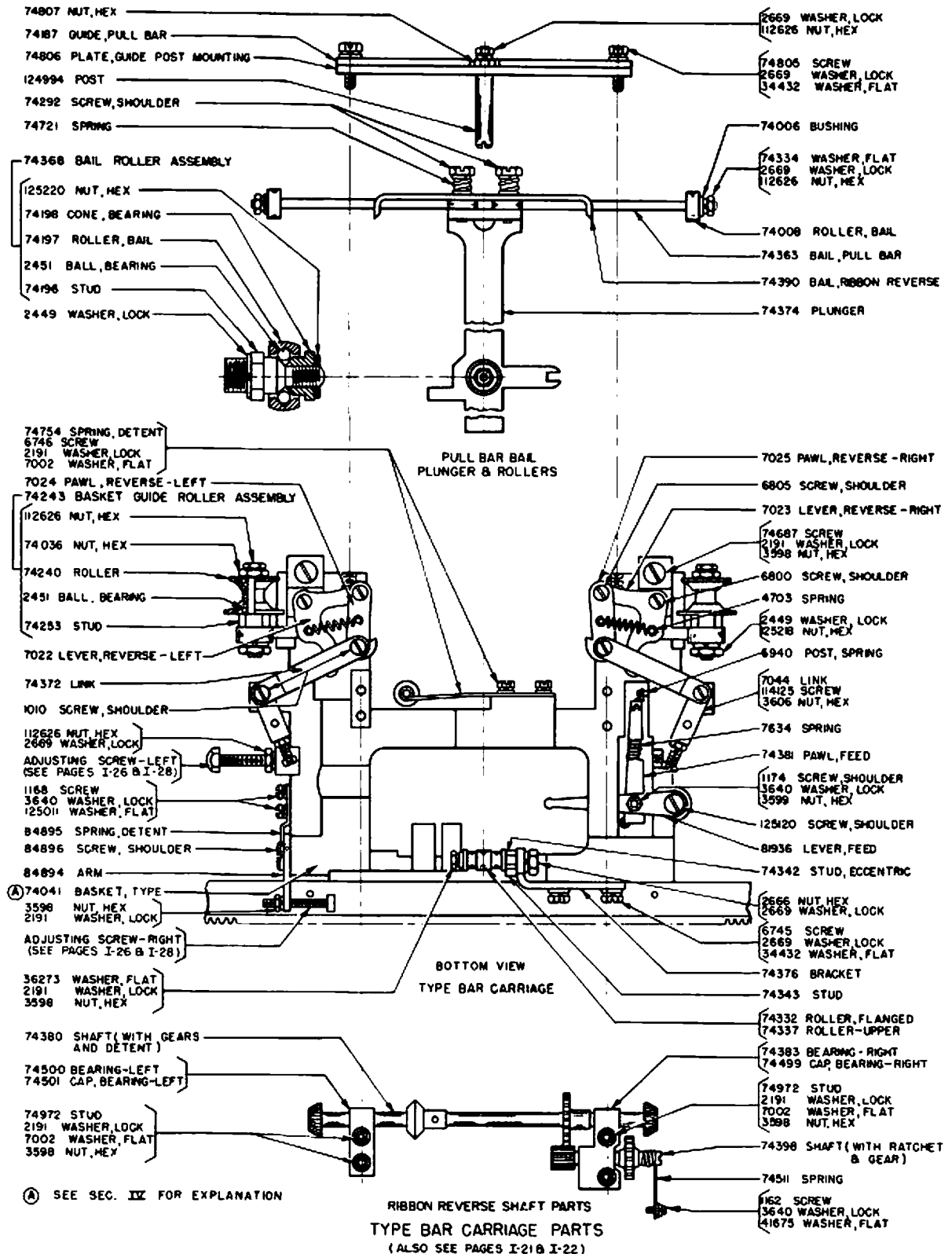
TYPE BAR CARRIAGE PARTS
(ALSO SEE PAGES I-22 & I-23)

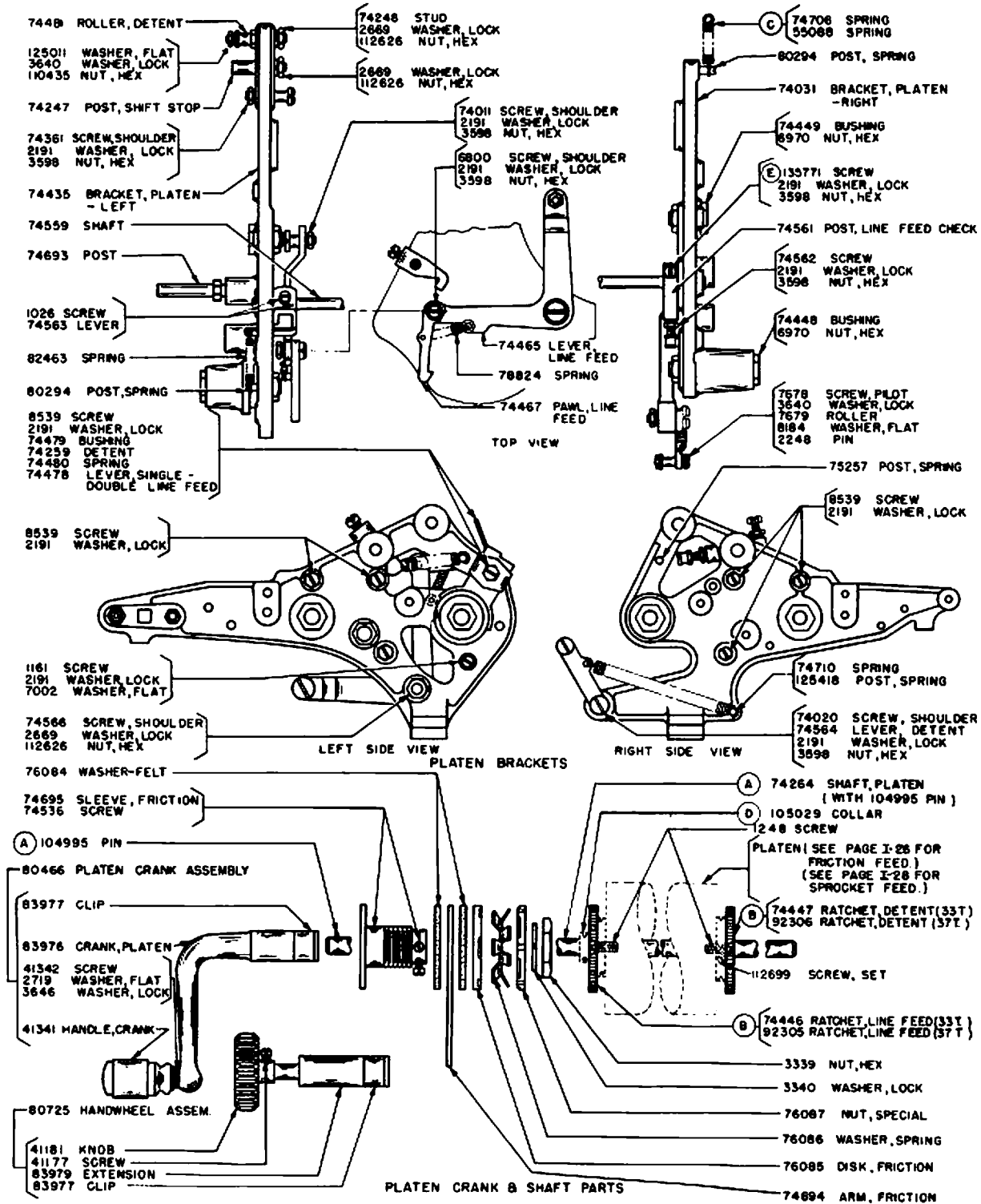
(SEE SEC. III, PAGE I FOR OLD STYLE)



NOTE: SEE SEC III, PAGE 3 FOR OLD STYLE BACKSTOP ASSEMBLIES

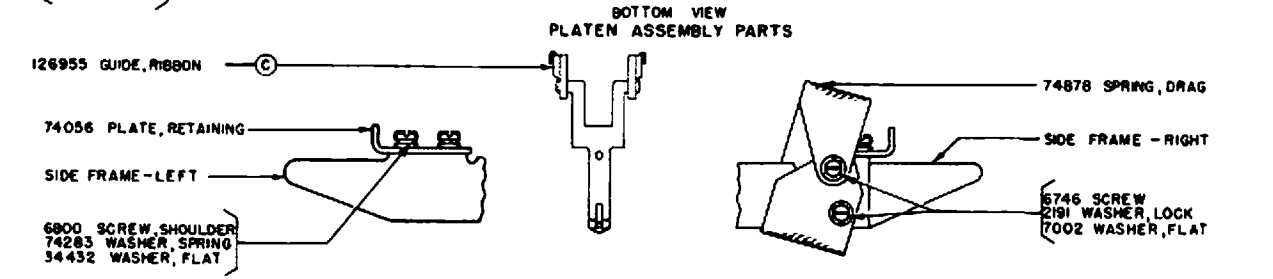
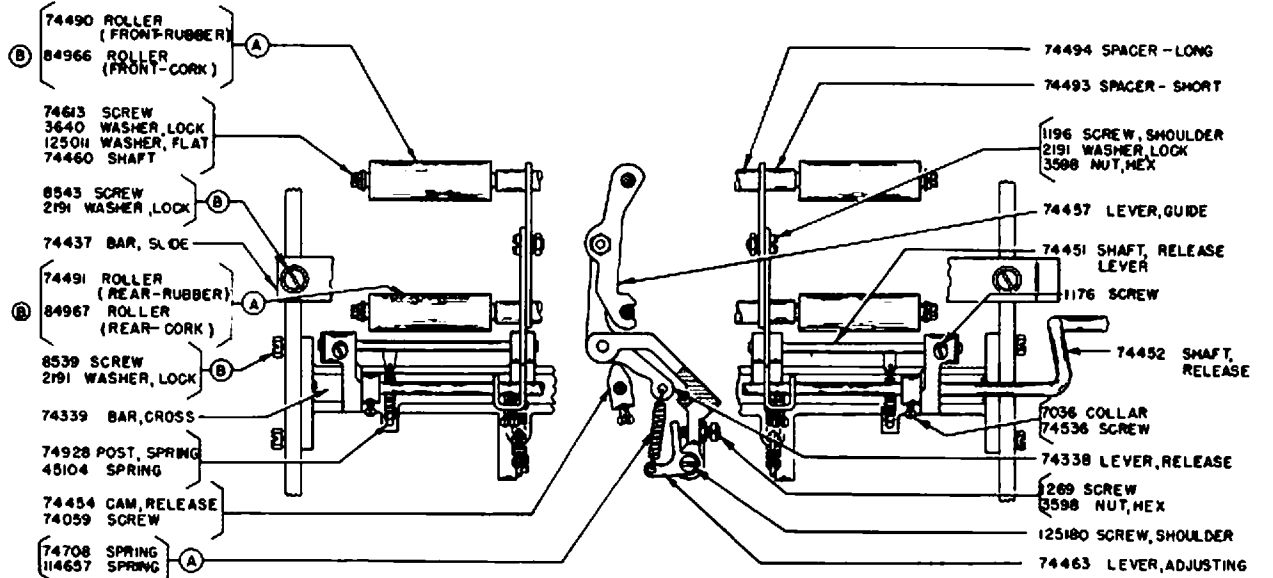
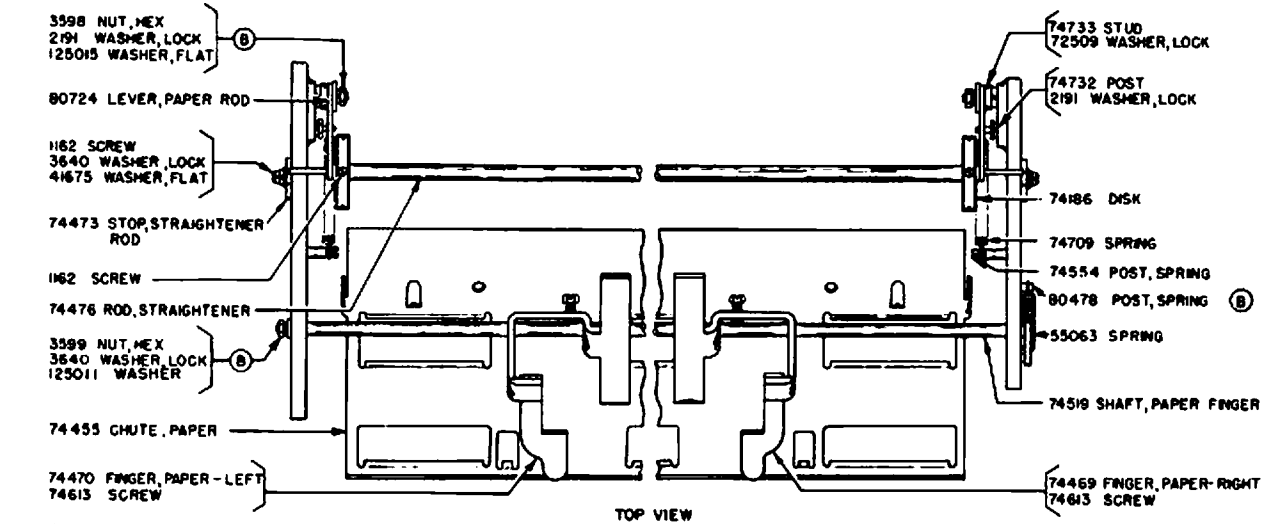
TYPE BAR CARRIAGE PARTS
(ALSO SEE PAGES I-21 & I-23)





ALL PARTS ON THIS PAGE ARE FOR USE WITH EITHER FRICTION OR SPROCKET FEED PRINTERS
 (FOR PARTS USED ONLY WITH FRICTION FEED, SEE PAGES I-25 & I-26)
 (FOR PARTS USED ONLY WITH SPROCKET FEED, SEE PAGES I-27 & I-28)

A B C D E SEE SEC. II FOR EXPLANATION



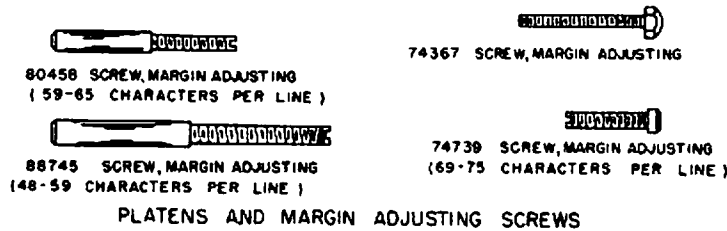
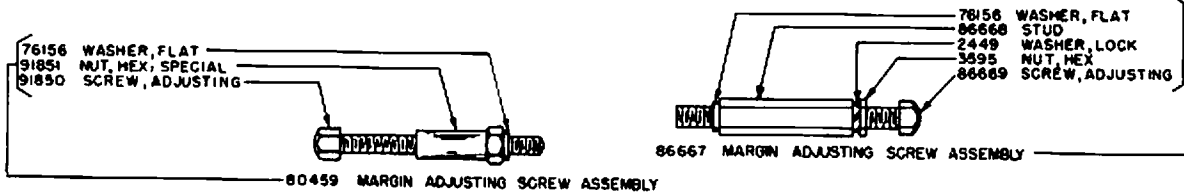
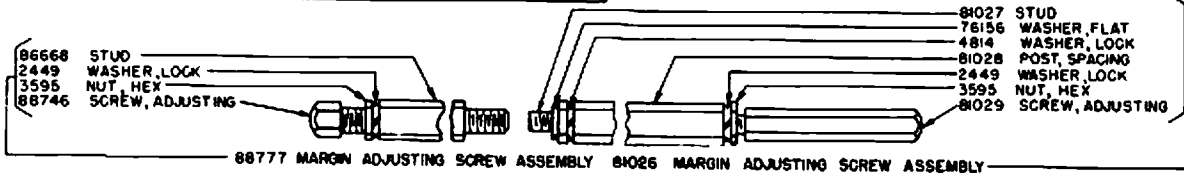
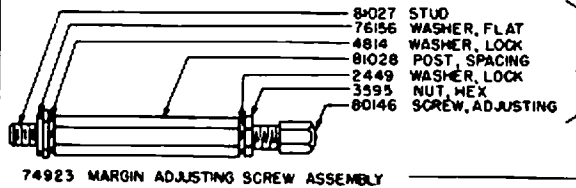
84913 SET OF PARTS FOR CONVERTING SPROCKET FEED PRINTERS TO FRICTION FEED
 (EXCLUDES PARTS MARKED B)
 ALL PARTS ON THIS PAGE AND PAGE I-26 ARE FOR USE WITH FRICTION FEED PRINTERS
 (FOR PARTS USED ONLY WITH SPROCKET FEED, SEE PAGES I-27 & I-28)
 (FOR PARTS USED WITH EITHER FRICTION OR SPROCKET FEED, SEE PAGE I-24)

A B C SEE SEC IX FOR EXPLANATION

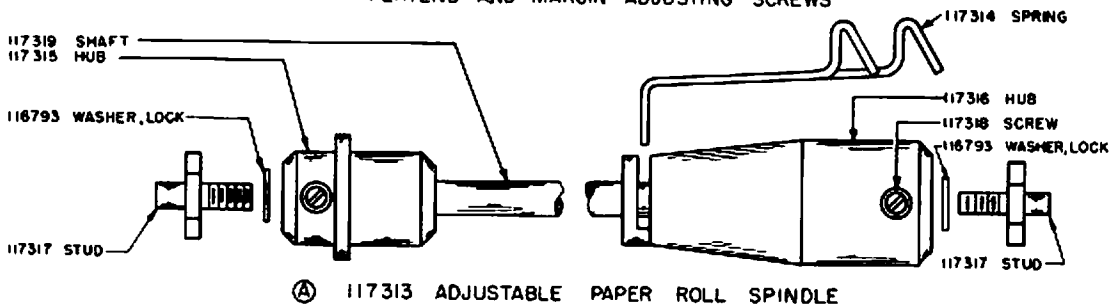


FRICTION FEED PLATENS				
WIDTH OF PAPER	PAPER LOCATED AT RIGHT HAND SIDE OF PLATEN			
	LEFT HAND MARGIN ADJ. SCREW	RIGHT HAND MARGIN ADJ. SCREW	PAPER ROLL SPINDLE	PLATEN RC- RUBBER COVERED HR-HARD RUBBER SJ-STEEL JACKETED
8 1/2	74367	74739	117313	74438 - RC 74820 - HR 82253 - SJ
8	80459	74739	117313	74438 - RC 74820 - HR 82253 - SJ
7	80459	74739	117313	74438 - RC 74820 - HR 82253 - SJ
6 1/2	86667	74739	117313	74438 - RC 74820 - HR 82253 - SJ
6	74923	74739	117313	74438 - RC 74820 - HR 82253 - SJ
5 1/2	74923	74739	117313	74438 - RC 74820 - HR 82253 - SJ
5	74923	74739	117313	74438 - RC 74820 - HR 82253 - SJ
4 5/16	81026	74739	117313	74438 - RC 74820 - HR 82253 - SJ

FRICTION FEED PLATENS				
WIDTH OF PAPER	PAPER CENTRALLY LOCATED			
	LEFT HAND MARGIN ADJ. SCREW	RIGHT HAND MARGIN ADJ. SCREW	PAPER ROLL SPINDLE	PLATEN RC- RUBBER COVERED HR-HARD RUBBER SJ-STEEL JACKETED
8 1/2	74367	74739	117313	74438 - RC 74820 - HR 82253 - SJ
6 1/2	80459	80458	117313	74438 - RC 74820 - HR 82253 - SJ
5 1/2	88777	88745	117313	74438 - RC 74820 - HR 82253 - SJ
5	88777	88745	117313	74438 - RC 74820 - HR 82253 - SJ



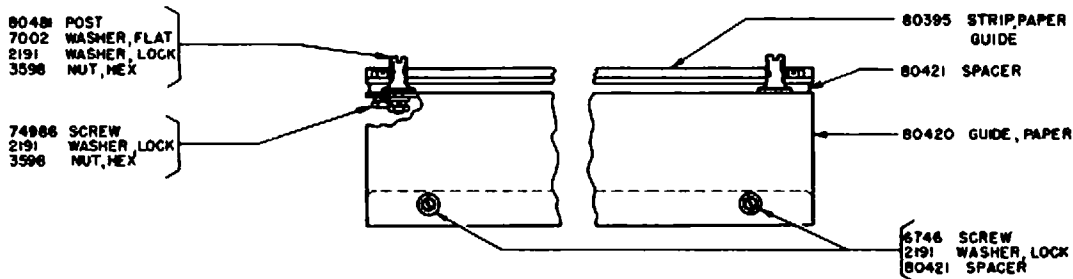
PLATENS AND MARGIN ADJUSTING SCREWS



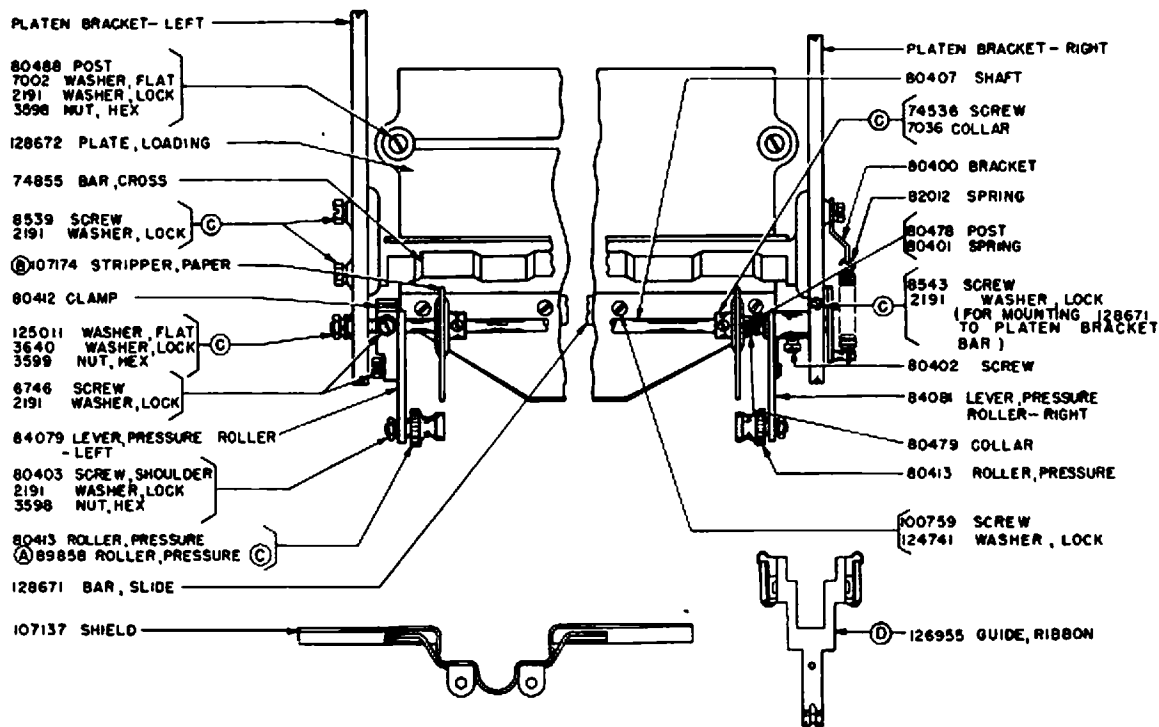
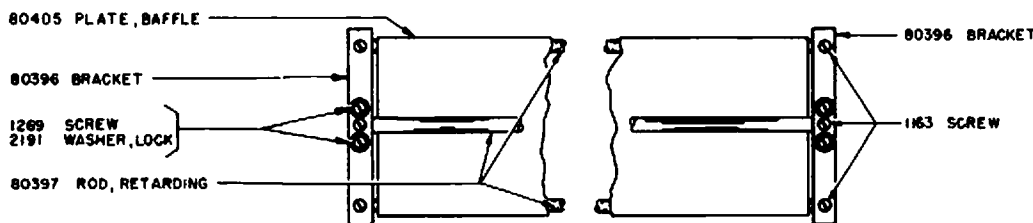
117313 ADJUSTABLE PAPER ROLL SPINDLE

ALL PARTS ON THIS PAGE AND PAGE I-25 ARE FOR USE WITH FRICTION FEED PRINTERS
 (FOR PARTS USED WITH SPROCKET FEED, SEE PAGES I-27 & I-28)
 (FOR PARTS USED WITH EITHER FRICTION OR SPROCKET FEED, SEE PAGE I-24)

SEE SEC. III FOR EXPLANATION



87154 SET OF PARTS TO PROVIDE A PAPER GUIDE ON THE COVER



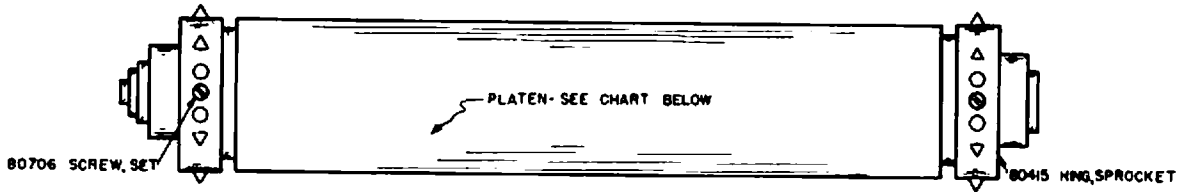
115872 SET OF PARTS TO CONVERT A FRICTION FEED TYPING UNIT INTO A SPROCKET FEED TYPING UNIT (EXCLUDES PARTS MARKED ©)

80483 SET OF PARTS FOR CONVERTING FRICTION FEED PRINTERS TO SPROCKET FEED (INCLUDES 87154 AND 115872 SET OF PARTS SHOWN ABOVE (EXCLUDES PARTS MARKED ©))

ALL PARTS ON THIS PAGE AND PAGE I-28 ARE FOR USE WITH SPROCKET FEED PRINTERS

(FOR PARTS USED ONLY WITH FRICTION FEED, SEE PAGES I-25 & I-26)
 (FOR PARTS USED WITH EITHER FRICTION OR SPROCKET FEED, SEE PAGE I-24)

(A), (B) & (D) SEE SEC. III FOR EXPLANATION



SPROCKET FEED PLATENS

* WIDTH OF PAPER	PAPER LOCATED AT RIGHT HAND SIDE OF PLATEN			
	LEFT HAND MARGIN ADJ. SCREW	RIGHT HAND MARGIN ADJ. SCREW	PLATEN RC - HARD RUBBER COVERED SJ - STEEL JACKETED	PLATEN WITH RINGS, SET SCREWS, AND LEFT HAND MARGIN ADJ. SCREW (SEE NOTES 1 AND 2)
8 1/2"	74367	74739	80422 (RC) 80765 (S.J.) 135000 (HRI)	80722 (RC) 80766 (S.J.) 135001 (HRI)
8"	80459	74739	80217 (RC) 89971 (S.J.)	80723 (RC) 89972 (S.J.)
7 1/2"	80459	74739	118265 (RC)	118267 (RC)
7"	80459	74739	82174 (RC)	82175 (RC)
5 1/2"	86667	74739	84902 (RC) 91509 (S.J.)	89540 (RC) 91512 (S.J.)
6 3/8"	86667	74739	92796 (RC)	92798 (RC)
6 1/4"	86667	74739	92819 (S.J.)	** 92821 (S.J.)
6 1/4"	86667	74739	99458 (RC)	99440 (RC)
6 1/4"	74923	74739	102369 (S.J.)	102372 (S.J.)
6"	74923	74739	80216 (RC) 81802 (S.J.)	80598 (RC) 81801 (S.J.)
5 3/4"	74923	74739	82172 (RC) 92793 (S.J.)	82173 (RC) 92793 (S.J.)
5 1/2"	74923	74739	80248 (RC) 81806 (S.J.)	80599 (RC) 81805 (S.J.)
5"	74923	74739	80451 (RC)	80800 (RC)
4 1/2"	81026	74739	92304 (RC) 92300 (S.J.)	92308 (RC) 92303 (S.J.)
4 5/16"	81026	74739	80249 (RC)	80601 (RC)
4 1/4"	81026	74739	91136 (RC)	91135 (RC)
4"	81026	74739	81025 (RC) 91868 (S.J.)	81024 (RC) 91871 (S.J.)
3 5/8"	81026	74739	88832 (RC)	88833 (RC)

NOTE 1

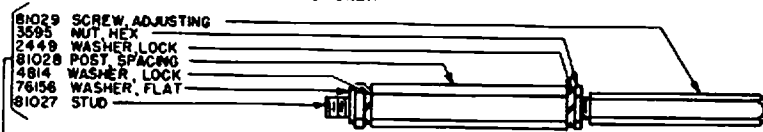
NO MARGIN ADJUSTING SCREW WITH 8-1/2" PLATENS

NOTE 2

WHEN CONVERTING FROM FRICTION FEED (NARROW PAPER, CENTRALLY LOCATED) TO SPROCKET FEED, THE RIGHT HAND MARGIN SCREW MUST ALSO BE CHANGED.

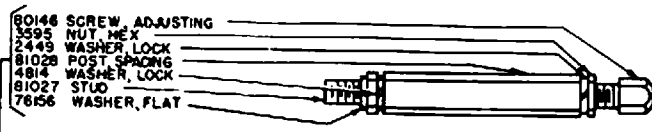
* THE WIDTH SHOWN IS THE OVERALL DIMENSION OF THE PAPER AND THE DISTANCE BETWEEN SPROCKET PIN HOLES IS 1/2" LESS.

** THE 92821 PLATEN ASSEMBLY HAS SPROCKET PINS ON THE LEFT HAND RING ONLY.

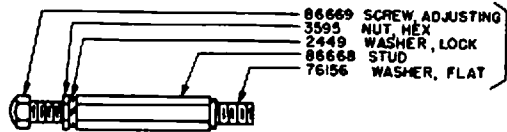


81026 MARGIN ADJUSTING SCREW ASSEMBLY

74739 SCREW, MARGIN ADJUSTING



74923 MARGIN ADJUSTING SCREW ASSEMBLY



86667 MARGIN ADJUSTING SCREW ASSEMBLY



74367 SCREW, MARGIN ADJUSTING

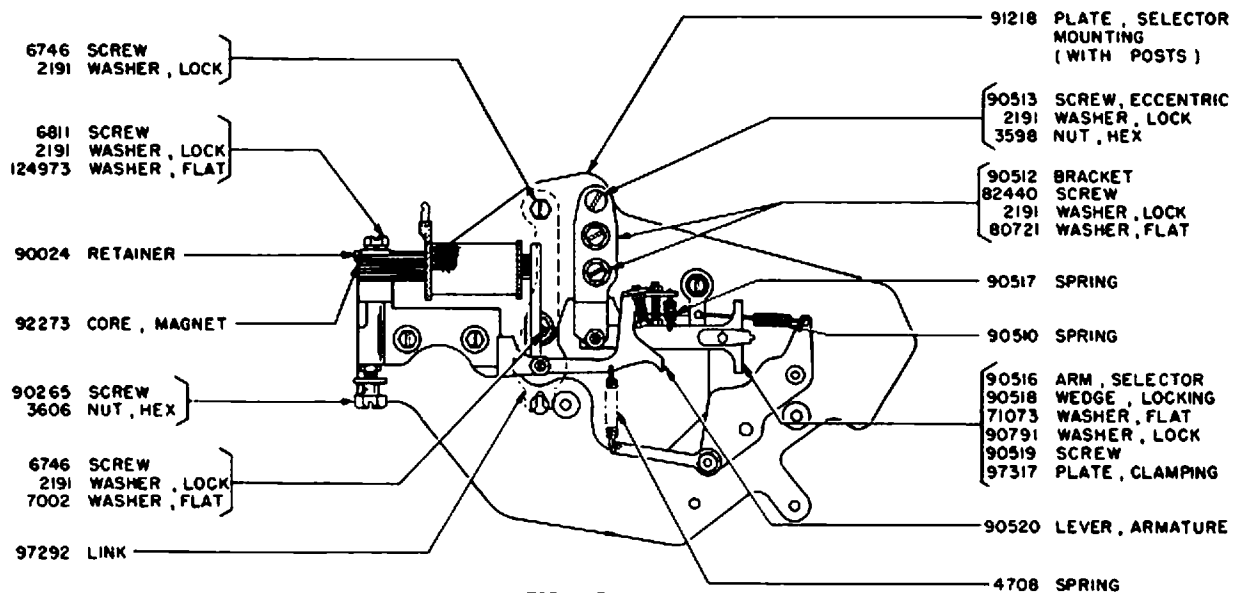


80459 MARGIN ADJUSTING SCREW ASSEMBLY

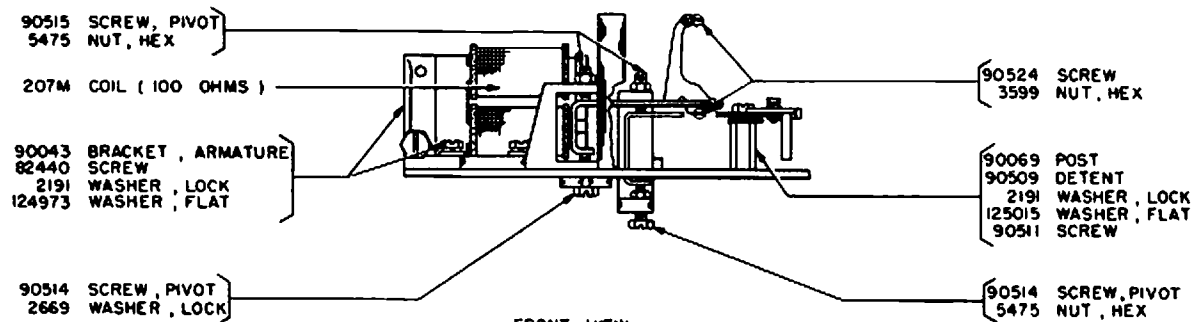
PLATEN AND MARGIN ADJUSTING SCREWS

ALL PARTS ON THIS PAGE AND PAGE I-27 ARE FOR USE WITH SPROCKET FEED PRINTERS

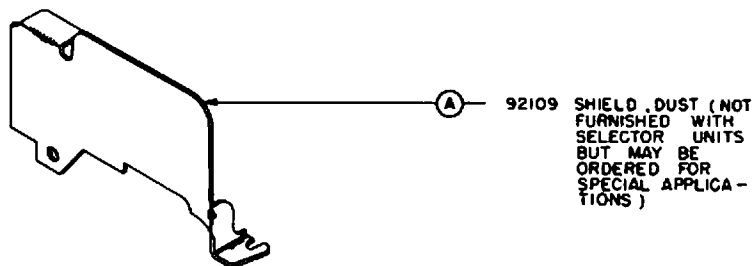
(FOR PARTS USED ONLY WITH FRICTION FEED, SEE PAGES I-25 & I-26)
(FOR PARTS USED WITH EITHER FRICTION OR SPROCKET FEED, SEE PAGE I-24)



TOP VIEW



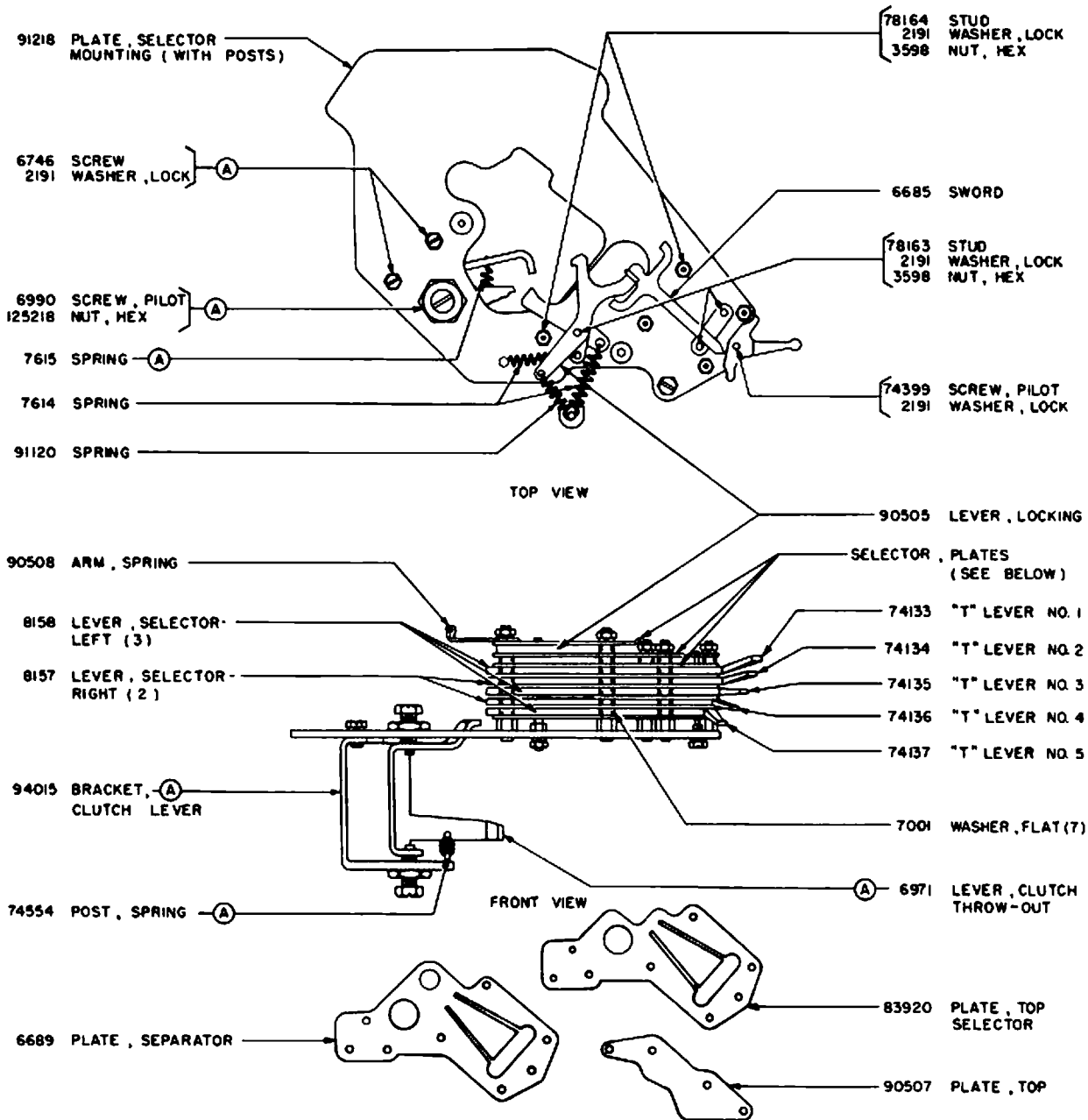
FRONT VIEW



HOLDING MAGNET SELECTOR

ALL PARTS ON THIS PAGE AND PAGES I-30 & I-31 ARE FOR USE WITH HOLDING MAGNET SELECTORS (FOR PARTS USED WITH PULLING MAGNET SELECTORS, SEE PAGES I-32 & I-33)

NOTE: 95380 SET OF PARTS CONVERTING A TYPING UNIT WITH A PULLING MAGNET SELECTOR TO A TYPING UNIT WITH A HOLDING MAGNET SELECTOR CONSISTS OF PARTS ON THIS PAGE AND PAGES I-30 & I-31 (EXCLUDING PARTS MARKED (A))

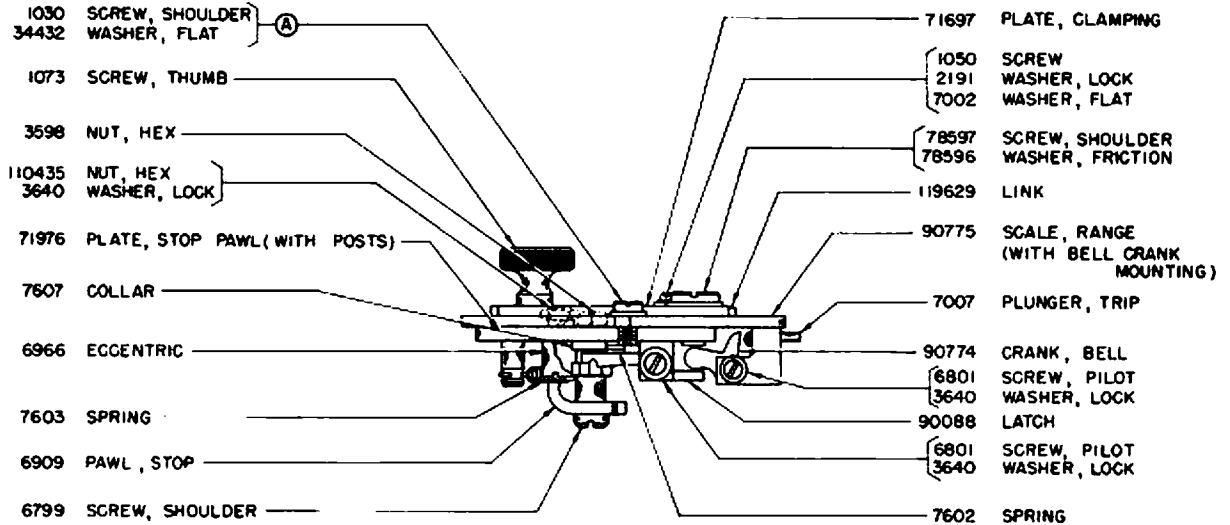


HOLDING MAGNET SELECTOR

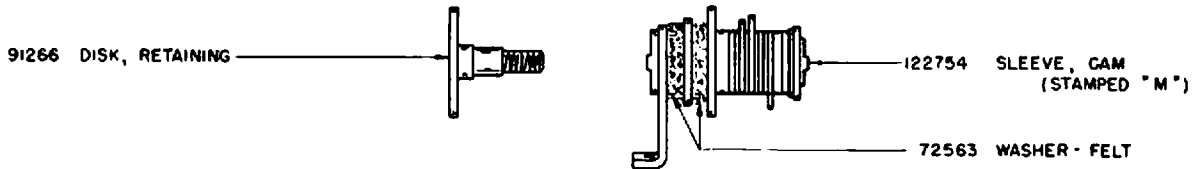
ALL PARTS ON THIS PAGE AND PAGES I-298 I-31 ARE FOR USE WITH HOLDING MAGNET SELECTORS

(FOR PARTS USED WITH PULLING MAGNET SELECTORS, SEE PAGES I-32 & I-33)

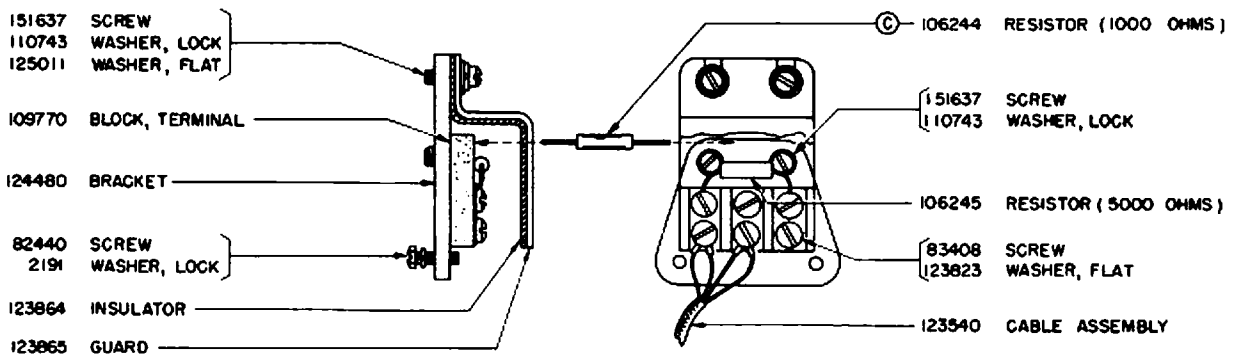
(A) SEE NOTE ON PAGE I-29



90760 RANGE SCALE ASSEMBLY
(EXCLUDES PARTS MARKED (A))



MAIN SHAFT PARTS
(FOR OTHER MAIN SHAFT PARTS SEE PAGE I-16)

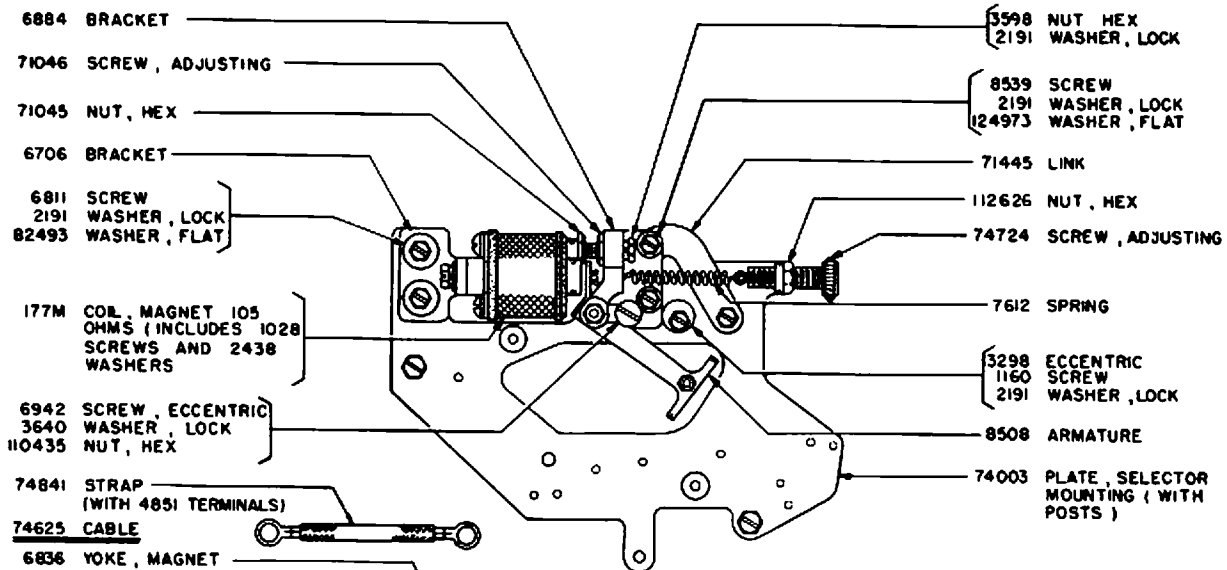


(A) 113703 TERMINAL BLOCK ASSEMBLY (SERIES - PARALLEL)
(EXCLUDES PARTS MARKED (C))

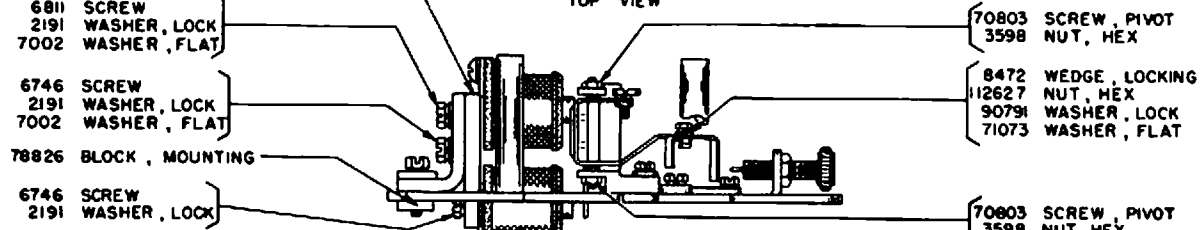
(A) & (B) 113704 TERMINAL BLOCK ASSEMBLY (SERIES - PARALLEL)
(INCLUDES PARTS MARKED (C)) NOT FOR USE IN BELL SYSTEM
SUPERSEDES 94490 SWITCH ASSEMBLY (SERIES - PARALLEL) SEE SEC. III, PAGE 3

ALL PARTS ON THIS PAGE AND PAGES I-29 & I-30 ARE FOR USE WITH HOLDING MAGNET SELECTORS
(FOR PARTS USED WITH PULLING MAGNET SELECTORS, SEE PAGES I-32 & I-33)

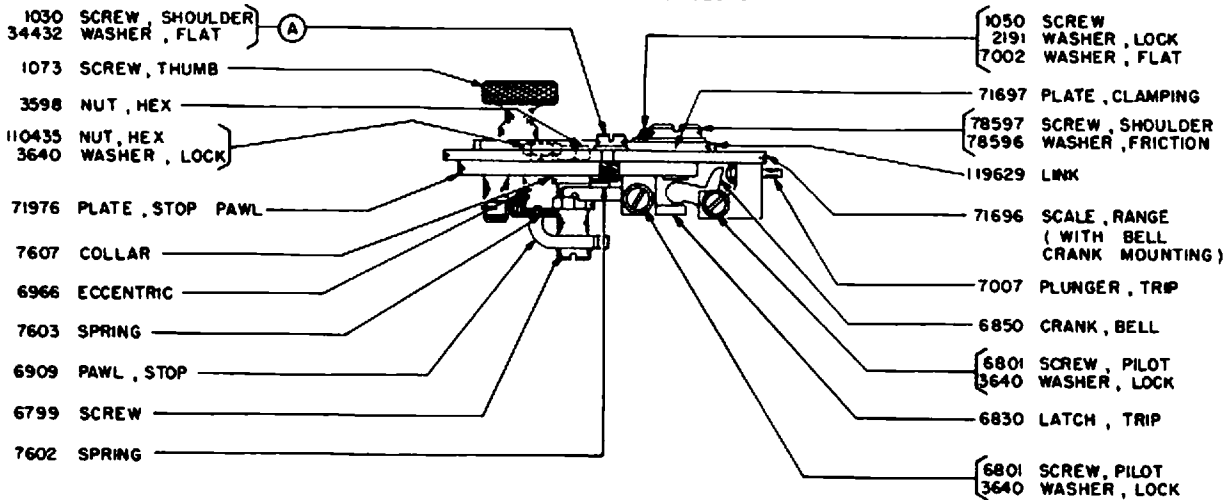
- (A) SEE NOTE ON PAGE I-29
- (B) SEE SEC III FOR EXPLANATION



TOP VIEW

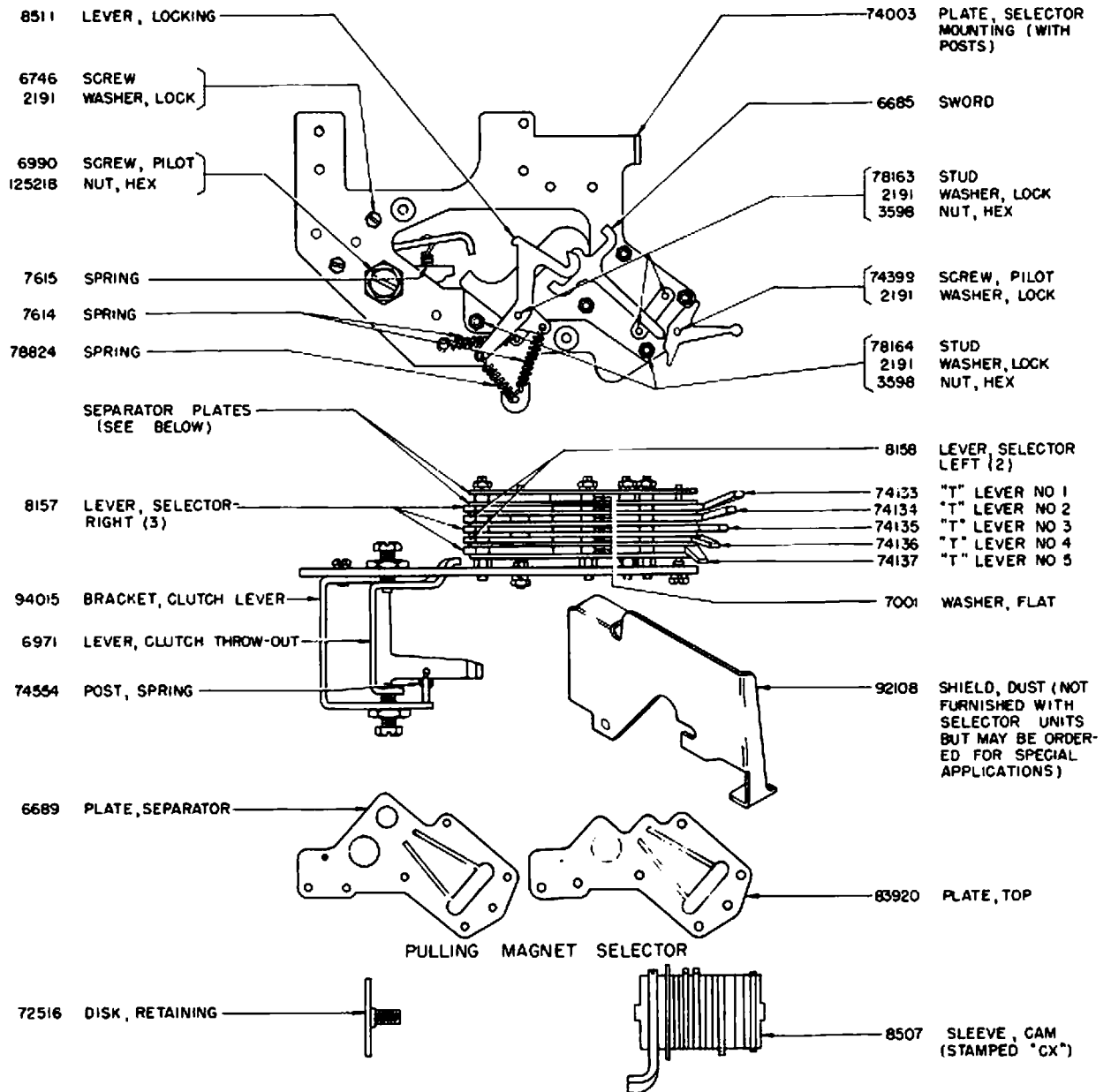


FRONT VIEW
PULLING MAGNET SELECTOR



71829 RANGE SCALE ASSEMBLY
(EXCLUDES PARTS MARKED (A))

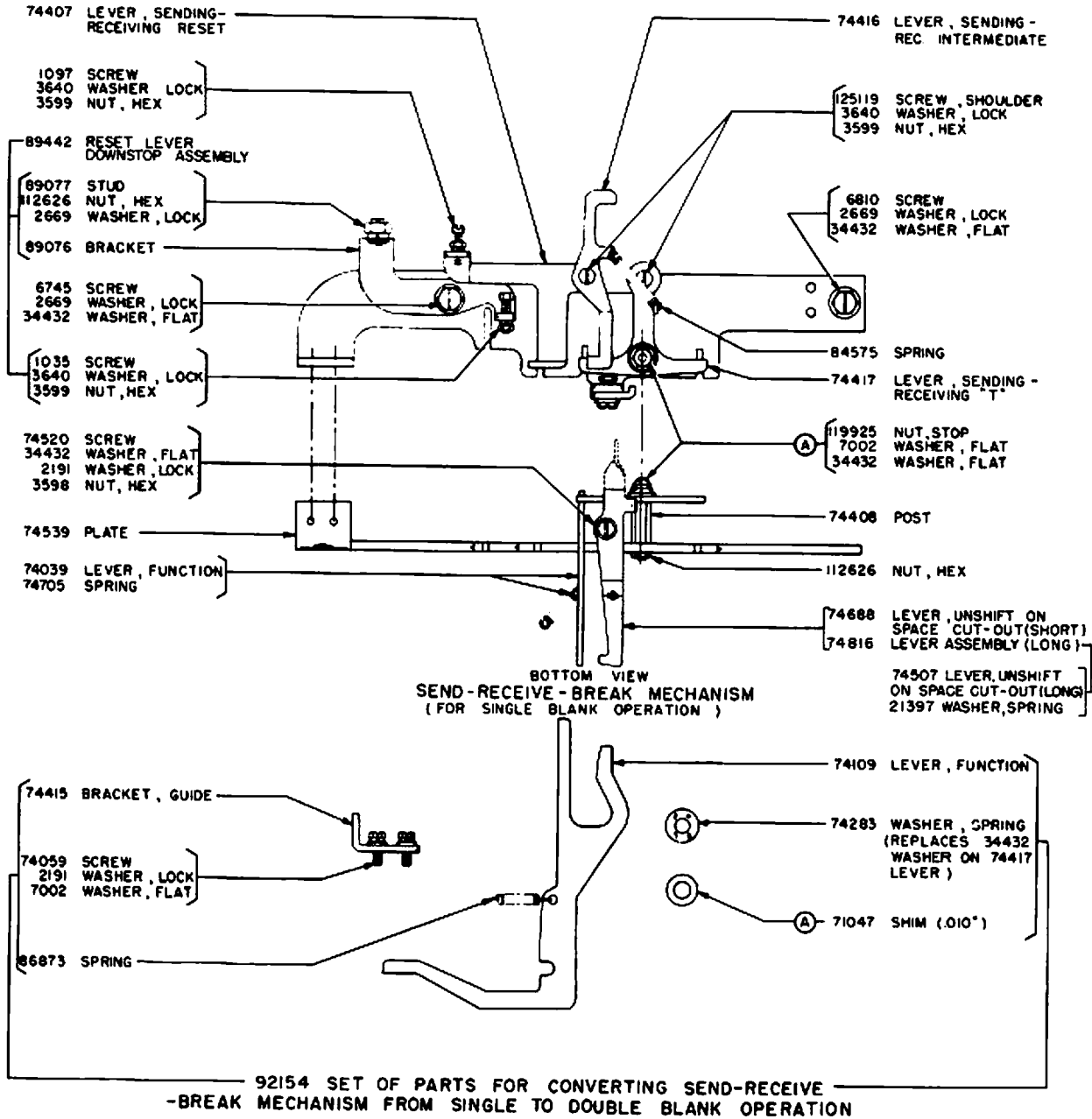
ALL PARTS ON THIS PAGE AND PAGE I-33 ARE FOR USE WITH
PULLING MAGNET SELECTORS
(FOR PARTS USED WITH HOLDING MAGNET SELECTORS, SEE PAGES I-29, I-30 & I-31)



MAIN SHAFT PARTS

(FOR OTHER MAIN SHAFT PARTS SEE PAGE I-16)

ALL PARTS ON THIS PAGE AND PAGE I-32 ARE FOR USE WITH PULLING MAGNET SELECTORS
(FOR PARTS USED WITH HOLDING MAGNET SELECTORS, SEE PAGE I-29, I-30 & I-31)



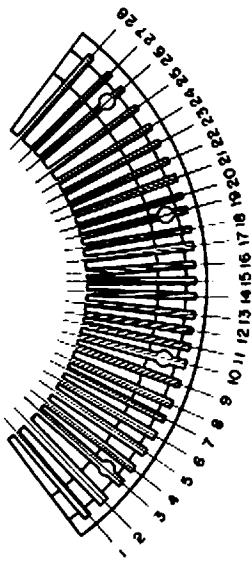
(A) SEE SEC. IV FOR EXPLANATION

FUNCTION LEVERS						
CATALOG NUMBER	POSITION USED	FUNCTION PERFORMED	SPRING	CODE SELECTION	OLD STAMPING	NEW STAMPING
74040	1	LOCKS VANES	74962	ALL COMBINATIONS	1	1
74131	2	CARRIAGE RETURN	74961	---4-	2	POS. 2 OR 3 74131
(A) 84927	2	CARRIAGE RETURN IN "LETTERS" POSITION ONLY	74961	---4-	2-B	POS. 32 84927
106145	2	CARRIAGE RETURN FOR AUTOMATIC C.R. & L.F.	74705	---4-	2	POS. 2 106145
119881	2	CARRIAGE RETURN IN "LETTERS" POSITION ONLY	74705	---4-	—	—
119882	2	CARRIAGE RETURN IN "LETTERS" AND "FIGURES"	74705	---4-	—	—
74128	3	SHIFT TO "FIGURES" POSITION	74962	12_45	3	POS. 3 74128
74138	4	BELL ON FIGURES "S"	74961	1_3_--	4	POS. 4 74138
80489	4	BELL ON FIGURES "J"	74961	12_4_	4	POS. 4A 80489
80919	4	BELL ON 'BLANK'	74961	-----	4	POS. 4B 80919
115542	4	BELL ON FIGURES "A"	74961	12_--	4	POS. 4C 115542
74109	5	RESETS SEND-RECEIVE-BREAK MECHANISM	86873	ANY SPACING CHARACTER	U	POS. 5A 74109
124421	5	RETURN RIBBON TO BLACK ON FIGURES "H"	34464	--3_5	—	UC-H 124421
84792	6	TABULATION ON FIGURES "Z"	74705	1_---5	6	POS. 6A 84792
86768	6	TABULATION ON FIGURES "G"	74705	_2_45	6	POS. 6B 86768
106144	6	AUTOMATIC CARRIAGE RETURN AND LINE FEED	74705	NONE	6	POS. 6 106144
120683	6	MOMENTARY OPERATION OF CONTACTS IN UPPER AND LOWER CASE "X"	74705	1_345	—	U & LC-X 120683
120684	6	MOMENTARY OPERATION OF CONTACTS IN UPPER AND LOWER CASE "Z"	74705	1_---5	—	U & LC-Z 120684
122874	6	STARTS OR STOPS REPERFORATOR	34464	SEE NOTE 1	—	—
124420	6	SHIFT RIBBON TO RED ON FIGURES "L"	34464	_2_--5	—	UC-L 124420
74932	7	SUPPRESSES PRINTING AND SPACING ON "BLANK"	87402	-----	7	7A
(B) 84060	7	SUPPRESSES PRINTING AND SPACING ON "BLANK" IN LETTERS POSITION ONLY	4708	-----	7	7B
111015	7	STOPS REPERFORATOR ON FIGURES "H"	74962	--3_5	7	POS. 7 111015
116714	7	STOPS REPERFORATOR ON FIGURES "L"	74962	_2_--5	7	POS. 7 116714
122541	7	STOPS REPERFORATOR ON FIGURES "N"	74962	--34_	—	UC-N 122541
122542	7	STOPS REPERFORATOR ON FIGURES "V"	74962	_2345	—	UC-V 122542
126979	7	STOPS REPERFORATOR	74962	SEE NOTE 1	—	POS. 7 126979
126891	7	STOPS REPERFORATOR	74962	SEE NOTE 1	—	POS. 7
129481	9	MOMENTARY OPERATION OF CONTACTS	74962	SEE NOTE 1	—	—
74130	9	SHIFT TO LETTERS POSITION ON "SPACE"	74962	--3_--	9	POS. 9 74130
74039	10	OPERATES SEND-REC-BRK. MECH. ON "BLANK" SIGNAL	74705	-----	10	10
74129	11	SHIFT TO "LETTERS" POSITION	74962	12345	11	POS. 11 74129
74127	12	LINE FEED	74962	_2_---	12	POS. 12 74127
(A) 84928	12	LINE FEED IN "LETTERS" POSITION ONLY	74962	_2_---	S-12	POS. 12A 84928
106279	12	LINE FEED IN "LETTERS" POSITION ONLY	74962	_2_---	—	POS. 12 106279
105274	12	LINE FEED FOR AUTOMATIC C.R. & L.F.	74962	_2_---	12	POS. 12 105274
74038	13	MOTOR STOP ON FIGURES "M"	82788	--345	13	POS. 13 74038
81784	13	MOTOR STOP ON "BLANK"	82788	-----	13	POS. 13C 81784
82271	13	MOTOR STOP ON FIGURES "H"	82788	--3_5	13	POS. 13D 82271
118484	13	MOTOR STOP ON FIGURES "F"	82788	1_34_	13	POS. 13 118484
96822	13	STARTS REPERFORATOR ON FIGURES "F"	74962	1_34_	13	POS. 13R-F 96822
98492	13	STARTS REPERFORATOR ON FIGURES "J"	74962	12_4_	—	POS. 13U-J 98492
99112	13	STARTS REPERFORATOR ON FIGURES "K"	74962	1234_	13	6G-K 99112
103300	13	STARTS REPERFORATOR ON FIGURES "M"	74962	--345	—	POS. 6 103300
116965	6 OR 13	STARTS OR STOPS REPERFORATOR	74962	SEE NOTE 1	—	—

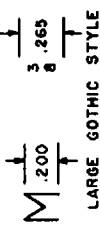
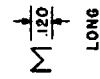
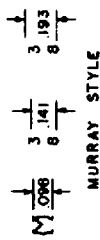
NOTE 1: ANY CODE SELECTION MAY BE OBTAINED BY REMOVING THE PROPER KNOCKOUTS (SEE PAGE I-53)

(A) & (B) SEE SEC. IX FOR EXPLANATION

CODE BARS	
NO. STAMPED ON CODE BARS	CATALOG NO.
1D	74180
2D	74181
3D	74182
4D	74183
5N	114432



NOTE:
CHECK CAREFULLY THE POSITION OF TYPE BARS IN THE SEGMENT AND THE ARRANGEMENT OF THE TYPE PALLETS ON THE TYPE BARS. IF THESE DIFFER IN ANY WAY FROM THE ARRANGEMENT SHOWN ON THIS PAGE, THE FOLLOWING PARTS SHOULD BE ORDERED BY NAME. FOR EXAMPLE ORDER:
TYPE PALLET -----(A-)
TYPE BAR 17(WITH PALLET)------(A-)
SPRING CUSHION KEYTOP------(A-)



NOTE 74185 PULL BAR AND 7634 PULL BAR SPRING ARE USED IN ALL POSITIONS.

NOTE: SEE PAGE 'J' FOR SAMPLE PRINTING ILLUSTRATING THE VARIOUS STYLES OF TYPE AS PRINTED.

TELETYPE ARRANGEMENT	DESCRIPTION	SETS OF TYPE PALLETS										TYPE BARS WITH PALLETS				TYPE BARS						
		MURRAY STYLE					LONG GOTHIC STYLE					GOTHIC STYLE		GOTHIC STYLE LARGE TYPE		PART NUMBER	NUMBER STAMPED ON BAR					
A	74317	X	X	X	X	X	X	X	X	X	X	X	X	X	X			91057	74657	90206	84722	114840
A	82147																84743				74217	17
B	74305	X	X	X	X	X	X	X	X	X	X	X	X	X	X	X	74643	90194	84710		74205	5
B	80149																82589	90220			74205	5
B	82176																82178				74205	5
B	74767	X	X	X	X	X	X	X	X	X	X	X	X	X	X	X	74843	90226		114863	74205	5
B	80862																82590				74205	5
B	83420																84737				74205	5
C	74321	X	X	X	X	X	X	X	X	X	X	X	X	X	X	X	74661	90210	84726		74221	21
C	74770	X	X	X	X	X	X	X	X	X	X	X	X	X	X	X	74687	90230		114868	74221	21
C	80865																82599				74221	21
C	82423																84787				74221	21
C	105343																74221H				74221	21
D	74320	X	X	X	X	X	X	X	X	X	X	X	X	X	X	X	74680	90209	84725	114843	74220	20
D	82148																84746				74220	20
E	74315	X	X	X	X	X	X	X	X	X	X	X	X	X	X	X	74659	90204	84720	114838	74215	15
F	74322	X	X	X	X	X	X	X	X	X	X	X	X	X	X	X	74662	90211	84727		74222	22
F	74771	X	X	X	X	X	X	X	X	X	X	X	X	X	X	X	74848	90223		114869	74222	22

