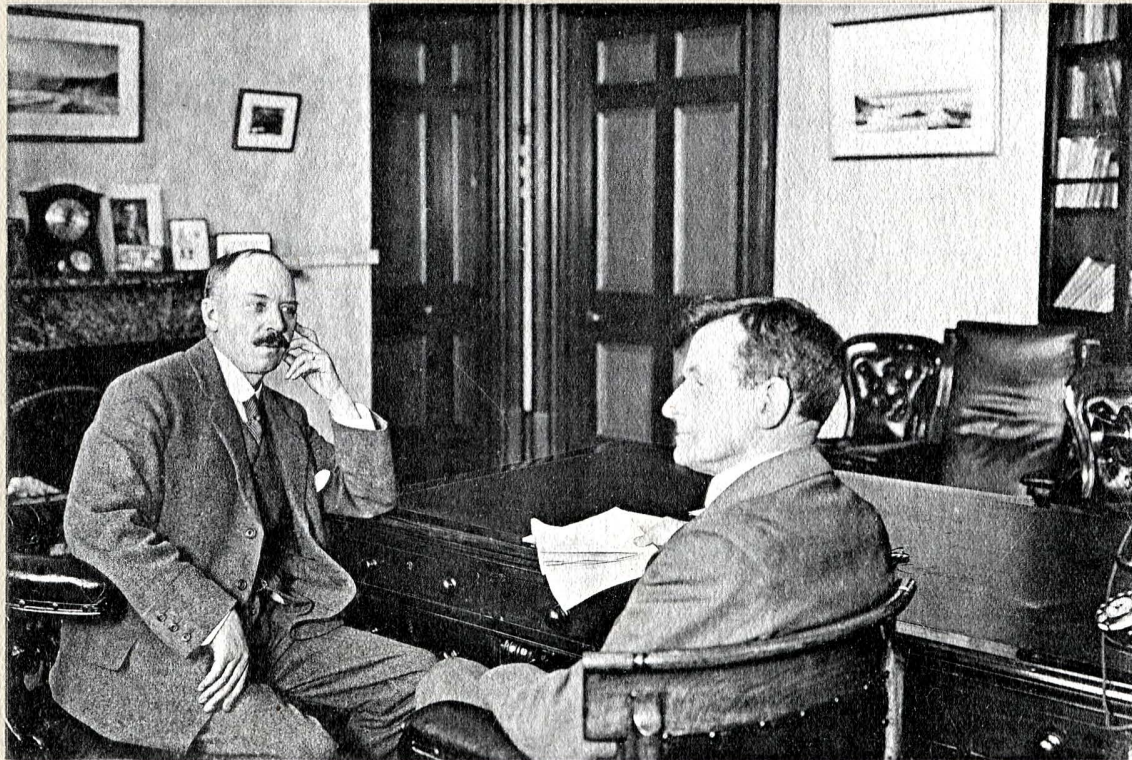




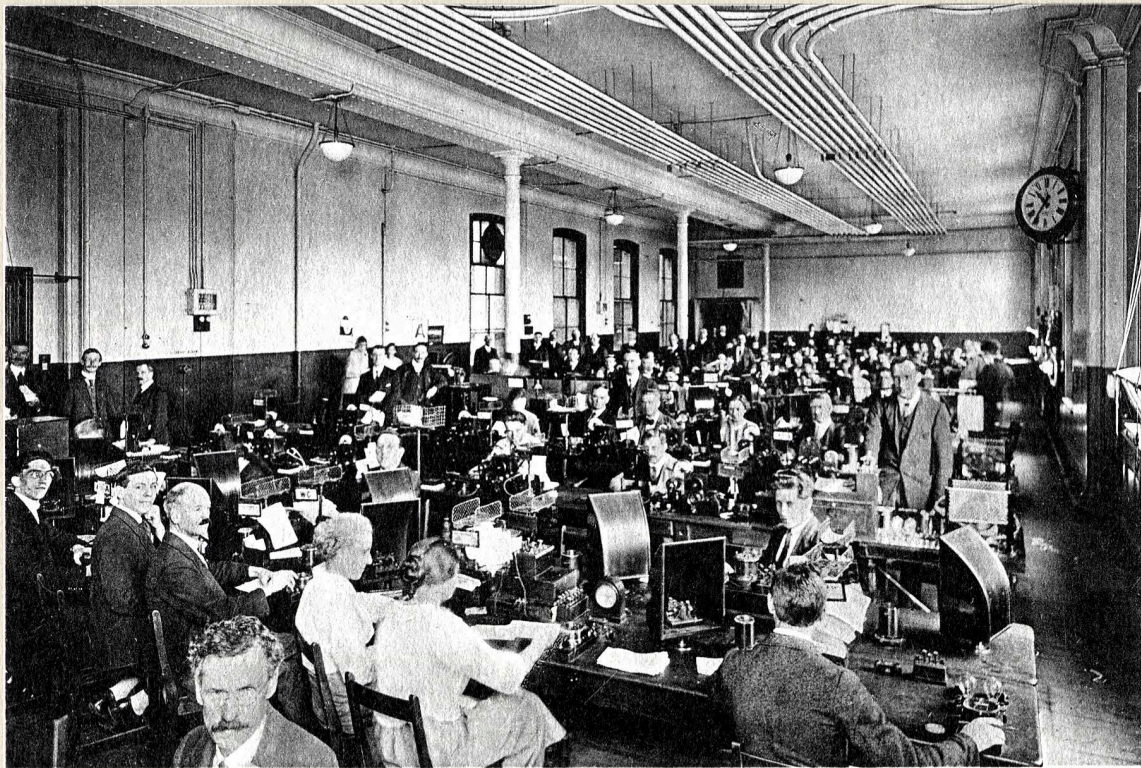
CENTRAL TELEGRAPH OFFICE
LONDON

15th, 16th, 17th November, 1922



MR. A. W. EDWARDS,
Deputy Controller.

MR. JOHN LEE, M.A. M. Com.
Controller.



A CORNER ON SECOND FLOOR.
In communication with offices in the South Eastern Counties.



MAIN GALLERY OF CABLE ROOM. (International, Cable and Wireless.)

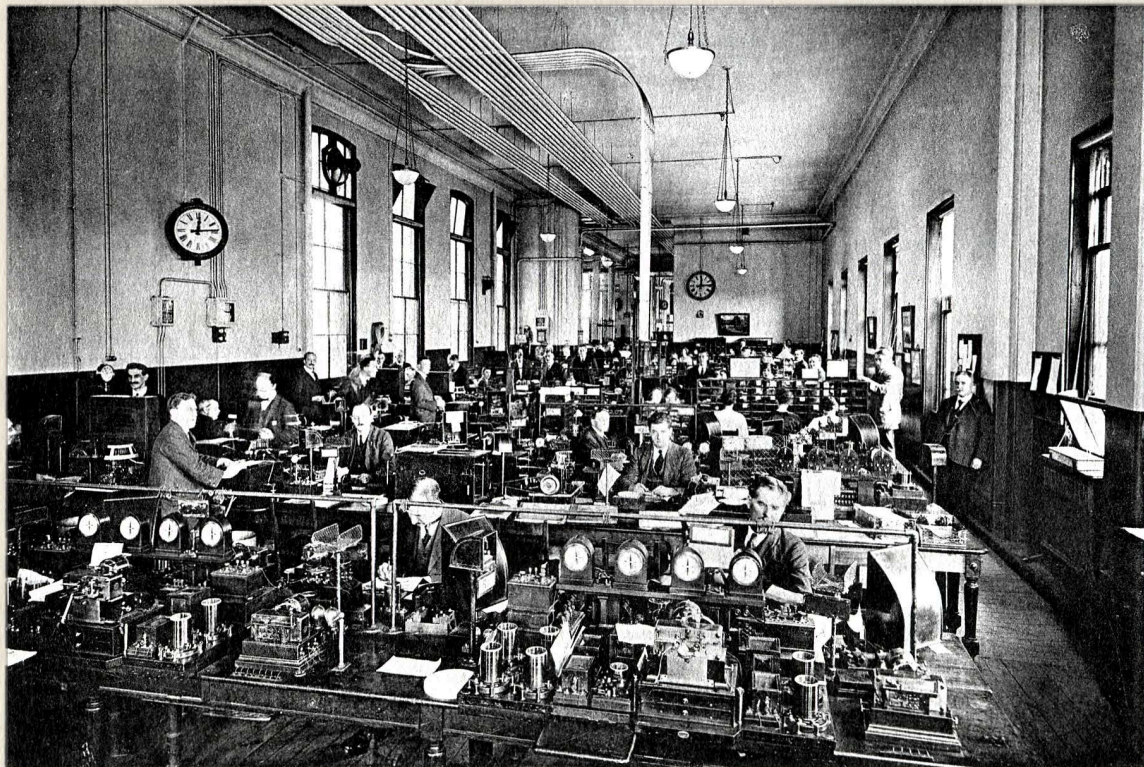


INTERNATIONAL CABLES. REPEATER, AND TEST ROOM.



"VIA IMPERIAL."

(Direct communication with Canada, for Canadian and Australian traffic.)



SPECIAL SECTION—FITTED WITH REPEATERS, CREEDS, ETC.
All Race Meetings and similar special events are dealt with in this section.



NEWS DIVISION. PUNCHING SECTION.

Fitted with 54 double-decked pneumatic perforators, each capable of preparing 8 wheatstone slips or tapes simultaneously.



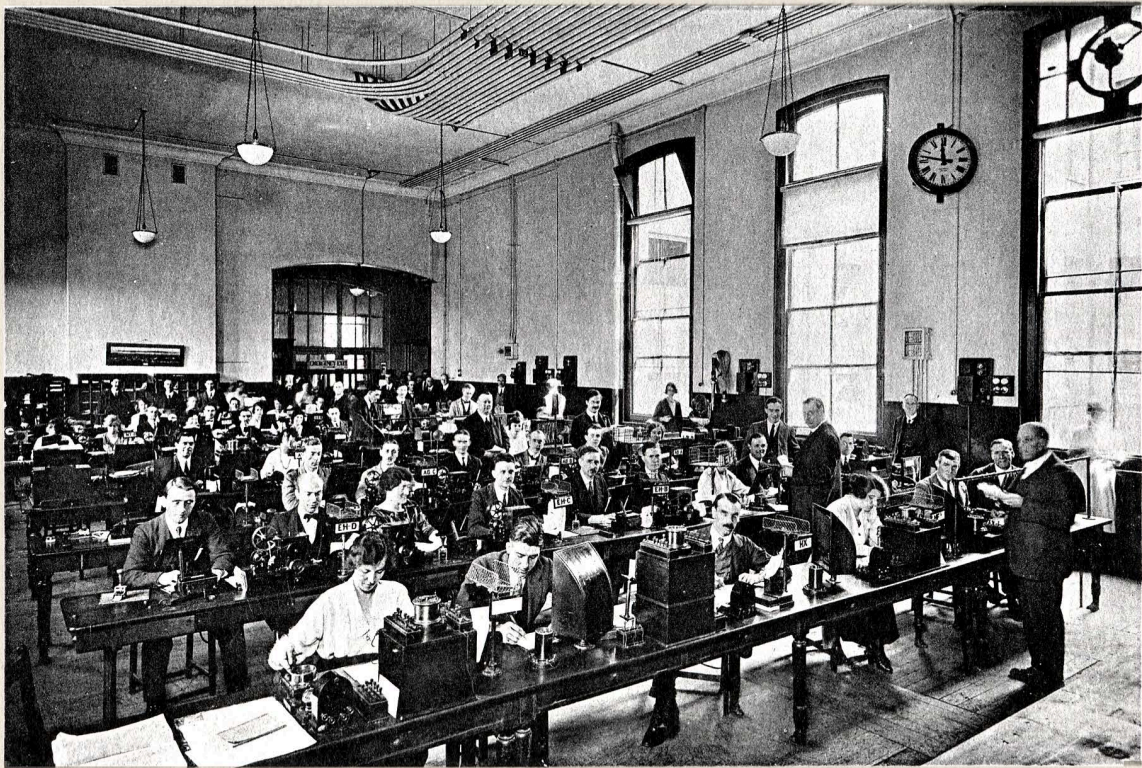
THIRD FLOOR. PART OF THE MAIN G.
(Direct connexion with the



GALLERY CENTRAL TELEGRAPH OFFICE.
(The chief provincial centres.)



GENERAL VIEW OF THE CENTRE GALLERY.
(Provincial Offices.)



A ONE-THIRD SECTION OF THE F. DIVISION,
with Baudots working to Edinburgh, Aberdeen, Newcastle, Hull and Leeds.



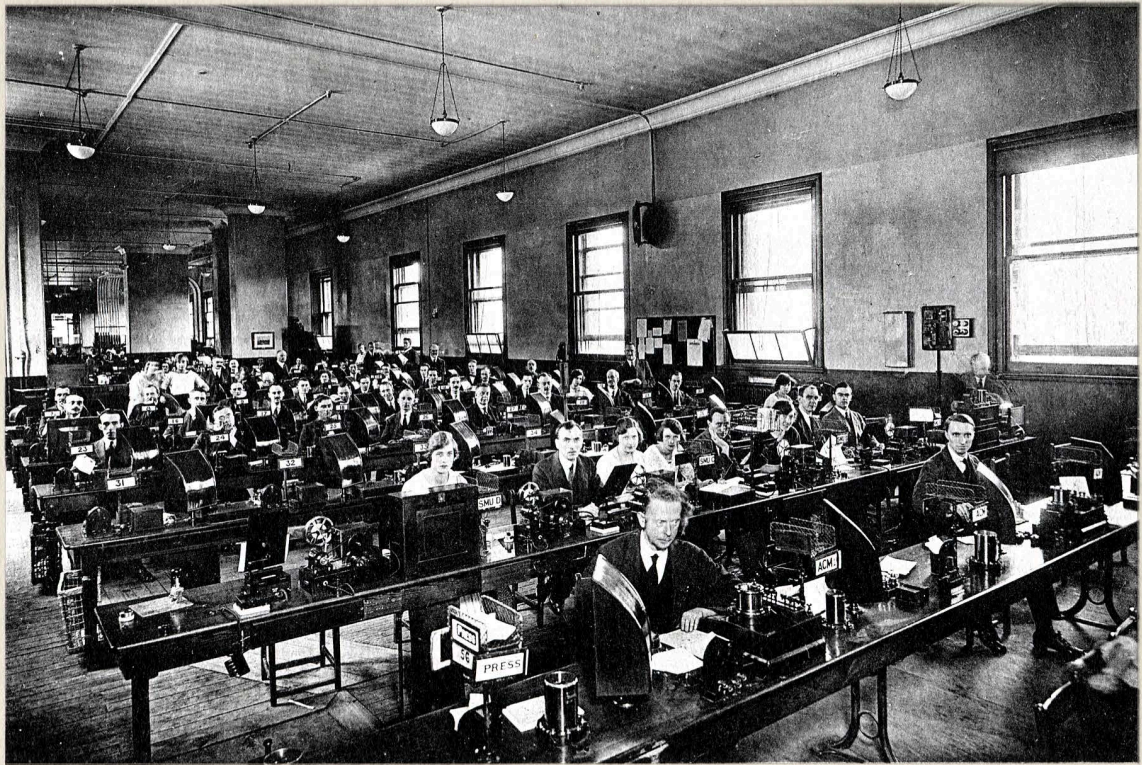
NORTH EAST CORNER OF THIRD FLOOR.
Chief Offices.—Cardiff, Swansea, Bristol, Plymouth, Exeter, Jersey, Guernsey, Nottingham and Grimsby.



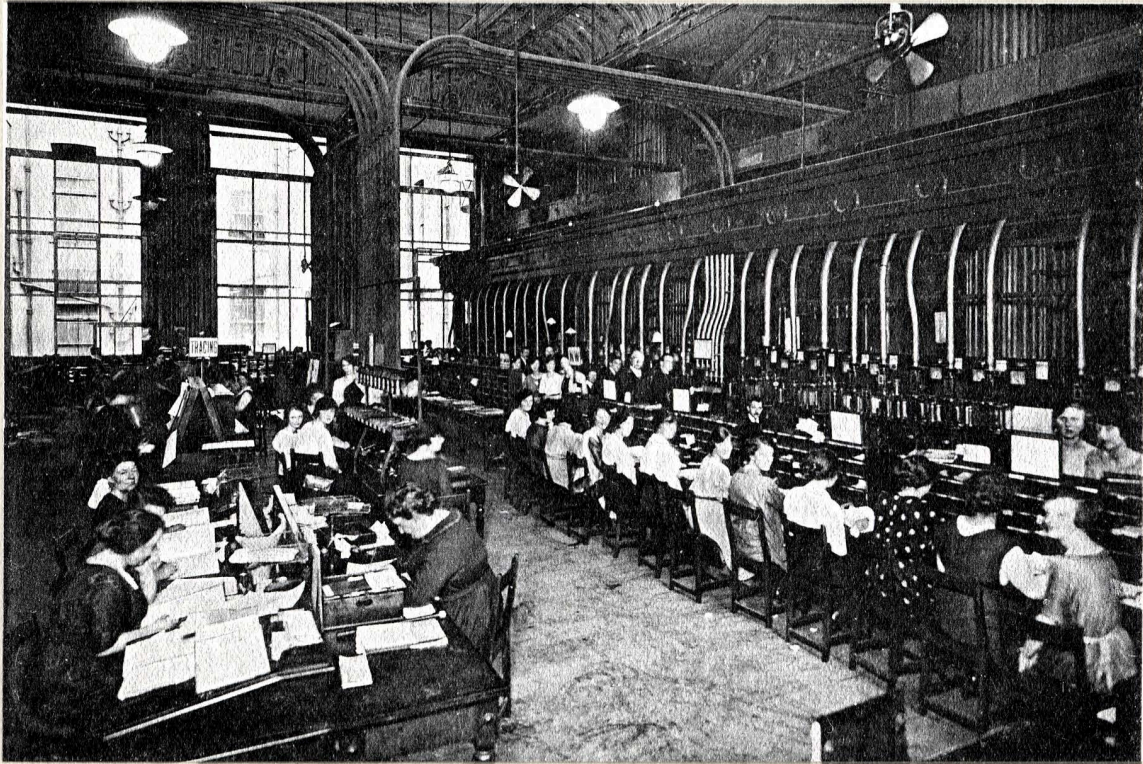
FOURTH FLOOR.
Intercommunication Switch for Metropolitan Offices.



PART OF "K" DIVISION.
London District Offices, also Metropolitan Test Box.



"1" DIVISION CONCENTRATOR SWITCH, 72 OFFICES,
including High Wycombe, Hemel Hempstead, Towcester, Grays, Chelmsford, etc.



GROUND FLOOR. CENTRAL HALL.
In communication with City Offices and all parts of the C.T.O. by pneumatic tubes.

