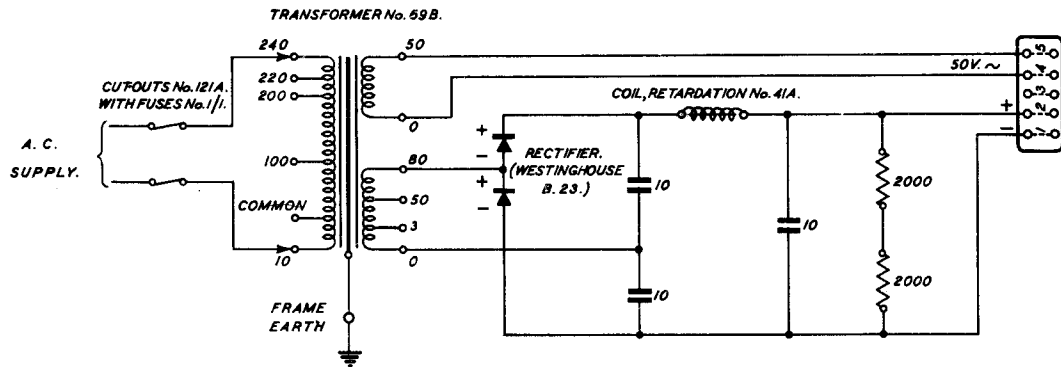


RECTIFIER No. 27A.

TG(L)918 B. 28-10-35



- NOTES 1. THE 10V. PRIMARY TAPPING PROVIDES FOR INTERMEDIATE INPUT VOLTAGES OF 110, 210, 230 & 250 WHEN USED IN CONJUNCTION WITH THE HIGHER TAPPINGS.
2. SECONDARY TAPPING 0-50V. PROVIDES A D.C. OUTPUT FROM THE RECTIFIER OF APPROXIMATELY 40V. AT 40mA. SECONDARY TAPPING 0-80V. PROVIDES A D.C. OUTPUT FROM THE RECTIFIER OF APPROXIMATELY 80V. AT 50mA. IN ADDITION THE RECTIFIER PROVIDES AN A.C. OUTPUT OF 50V. AT 400mA.

MADE L.L. & AMENDED.	28-10-35A	A
3VOLT TAP ADDED.	16-4-37	B
L.L. NO WAS D1012.		
Amendment		