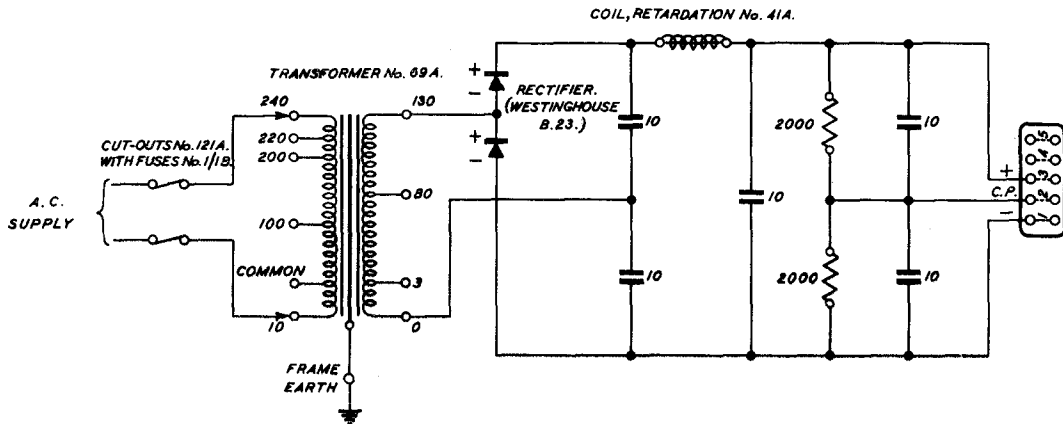


# RECTIFIER No. 26A.

TG(L)905 D. 9-7-35



NOTES 1. THE 10V. PRIMARY TAPPING PROVIDES FOR INTERMEDIATE INPUT VOLTAGES OF 110, 210, 230 & 250 WHEN USED IN CONJUNCTION WITH THE HIGHER TAPPINGS.

2. SECONDARY TAPPING 0-80V PROVIDES A D.C. OUTPUT FROM THE RECTIFIER OF APPROX. 50V+50V. AT 20 mA.

" " 0-130V. " " " " " " " " " " 80V.+80V. " "

SEE SUPERSEDED TRACING.	4-B
MADE L.L.R. AMENDED.	9-7-35 C
3 VOLT TAP ADDED.	16-4-37 D
L.L. NO WAS 21071.	
Amendment	