

TELEPRINTER P. W. CIRCUIT.

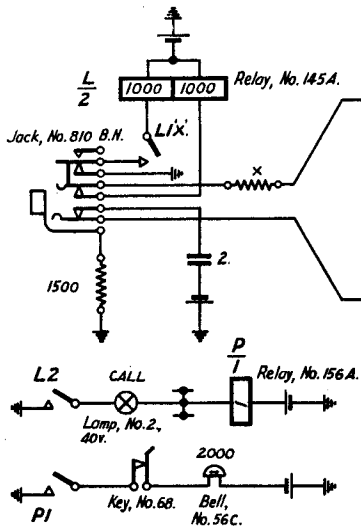
TG (L)883 (1)

10 LINE CONCENTRATOR, FOR SHORT LINES, WITH INTERCOMMUNICATION FACILITIES.

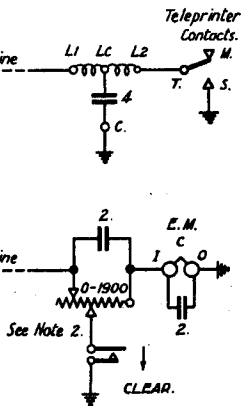
C. B. WORKING.

1B-10

LINE CIRCUIT.



RENTER'S OFFICE.



NOTES.

1. H.Q.'s resistances to be adjusted to give 20 mA. on the shortest A Line and resistances x to be inserted in other A Lines to give 20 mA.
2. Renter's office resistance to be adjusted to give 20 mA. on B Line and not less than 30 mA with key operated.
3. For conns. of motor circuit of Teleprinter, No. 7A see TG(L)819
4. For Renter's office wiring see TG(L)840
5. Two H.Q.'s Teleprinter positions, with cord cts. as shown, to be provided.
6. All batteries to be 40v.

B. L.L. No. was B 1037. ~~4421~~ 306. ~~1011~~.
 A. Contact CA2 series res deleted. H.A. ~~CAF~~. C.B. 3-4-35.
 C.B. H.A. ~~CAF~~ ~~1011~~ ~~1011~~.

