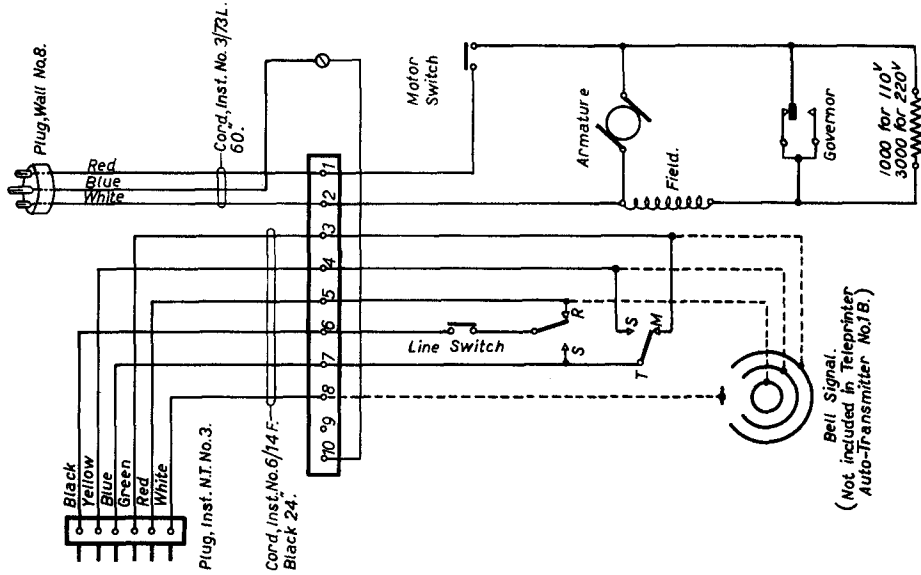


TELEPRINTER AUTO-TRANSMITTER Nos. IA AND IB.
SCHEMATIC CONNECTIONS.

TG(L)852 B.

26-6-34.

Amendment	Redrawn L.L. No was C1007.	16-7-37	B



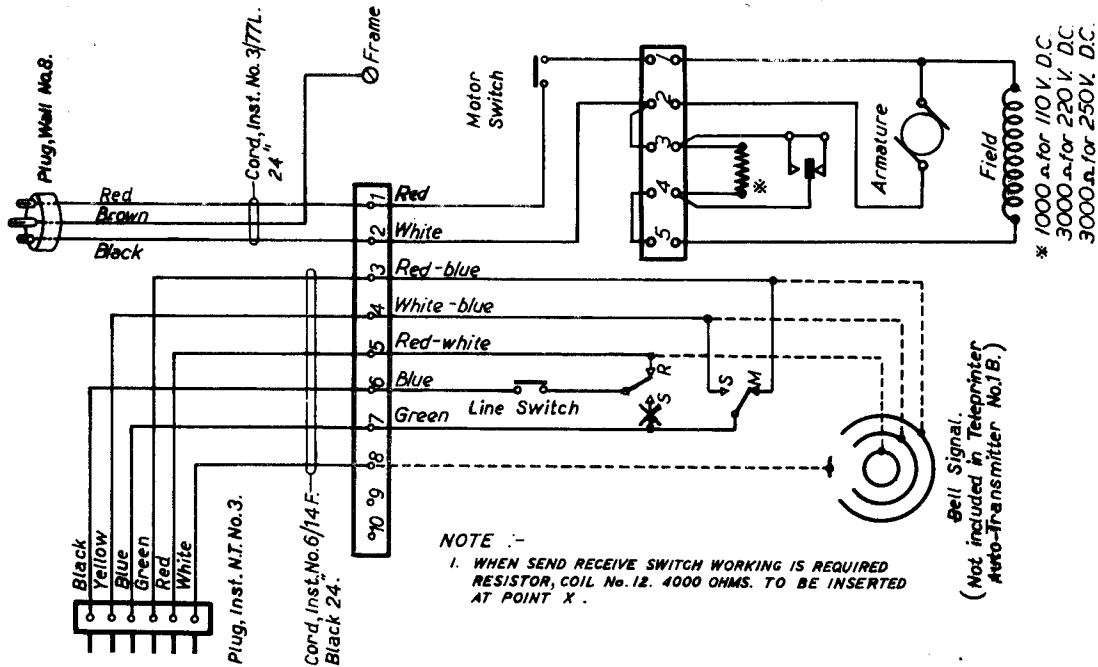
TELEPRINTER AUTO-TRANSMITTER Nos. 1A AND 1B.

SCHEMATIC CONNECTIONS.

TG(L)852

26-6-34.

Revised	No. was C1007.	B-7-37	B
Conn. bn.	motor circuit added	BT-99	C
Amendment	Note 1. added.	5.2.4d	D



NOTE :-

1. WHEN SEND RECEIVE SWITCH WORKING IS REQUIRED RESISTOR, COIL No. 12. 4000 OHMS. TO BE INSERTED AT POINT X .

Bell Signal.
(Not included in Teleprinter
Auto-Transmitter No. 1B.)

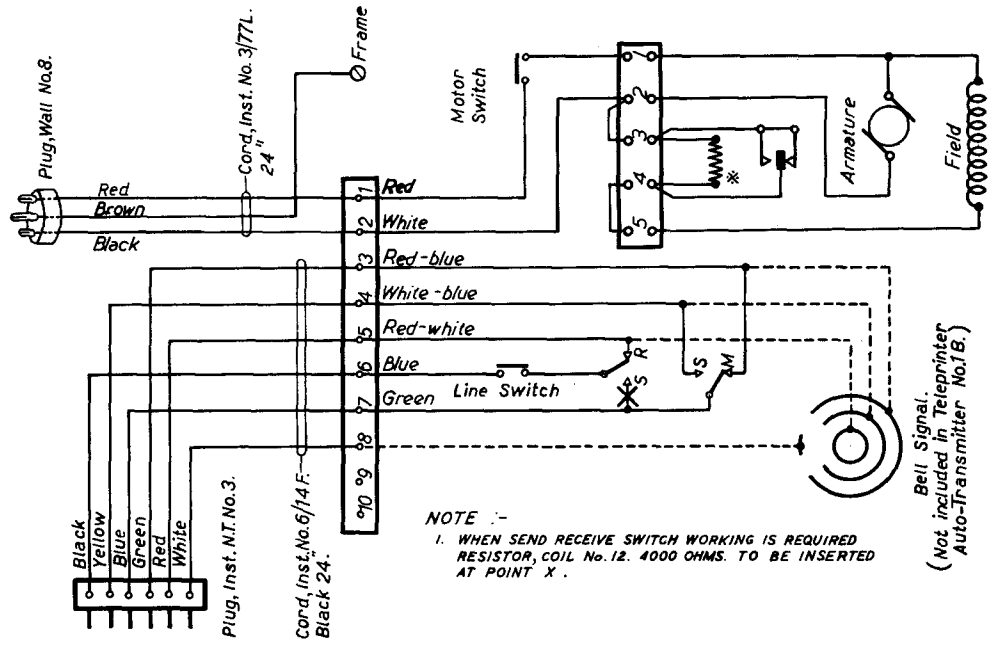
* 1000 Ω . for 110 V. D.C.
3000 Ω . for 220 V. D.C.
3000 Ω . for 250 V. D.C.

TELEPRINTER AUTO-TRANSMITTER Nos. IA AND IB.

SCHEMATIC CONNECTIONS.

TG(L) 852/O
22-12-32
SUPERSEDED FOR NEW
WORK BY TG(L) 852/1

in LL. No. was C1007.	16-7-37	B	
Conn. block for motor circuit added	RT-934	C	
Note 1. added.	5.2.44.	D	IO AND SUPERSESSION NOTE ADDED 14-3-44
E			



* 1000 Ω for 110 V. D.C.
3000 Ω for 220 V. D.C.
3000 Ω for 250 V. D.C.

NOTE :-
1. WHEN SEND RECEIVE SWITCH WORKING IS REQUIRED
RESISTOR, COIL No. 12. 4000 OHMS. TO BE INSERTED
AT POINT X.

Bell Signal.
(Not included in Teleprinter
Auto-Transmitter No. 1B.)

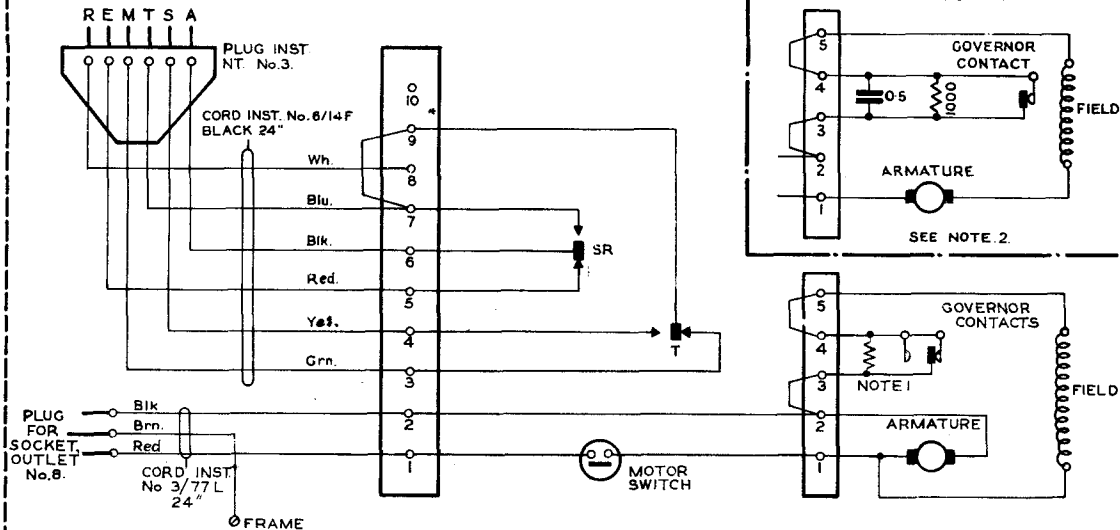
CIRCULATION.

GENERAL

TELEPRINTER AUTO-TRANSMITTER No.1B.

TG(L) 852/1

14. 3. 44.



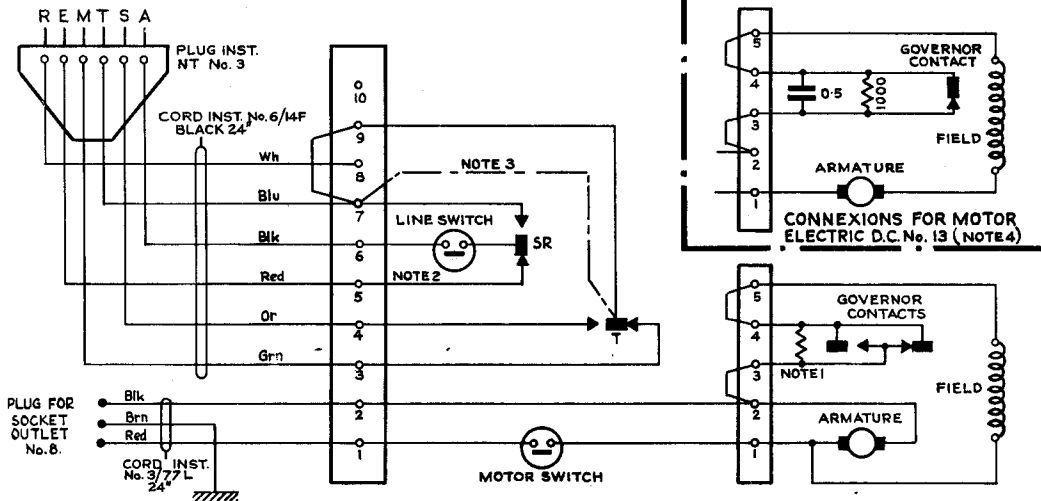
Red & Black leads reversed on tags 1 & 2 1/10/44
 Conns for No. 13 Motor and Note 2 added 28.2.45
 Inst. plug connexions amended 22.12.45

AMENDMENT.

W

TELEPRINTER AUTO-TRANSMITTER No.1B MARK I TG (L) 852

CIRCULATION	GENERAL
A-E	Suffix
IB-10-48 F	
SEE SUPERSEDED TRACING /O AND /I COMBINED & REVERTED TO TG 852. REF. TO TRANSMITTER NO 1A DELETED	
PAPER	Amendt
W	



NOTES:-

1. THIS RESISTOR IS 1000Ω FOR 100-110V. D.C. OR 3000Ω FOR 200-220V. D.C. AND 230-250V. D.C.
2. THE LINE SWITCH IS NOT FITTED TO MACHINES MANUFACTURED SINCE 1942.
3. ON MACHINES MANUFACTURED PRIOR TO 1943 THE TONGUE IS CONNECTED TO TERMINAL 7 (SEE DOTTED CONNEXION) INSTEAD OF TERMINAL 9 AND THE STRAP BETWEEN TERMINALS 7&9 IS OMITTED.
4. MOTOR ELECTRIC D.C. No.13 SHOULD NOT BE USED WITHOUT SPECIAL AUTHORITY FROM THE E-IN-C(TG BRANCH)

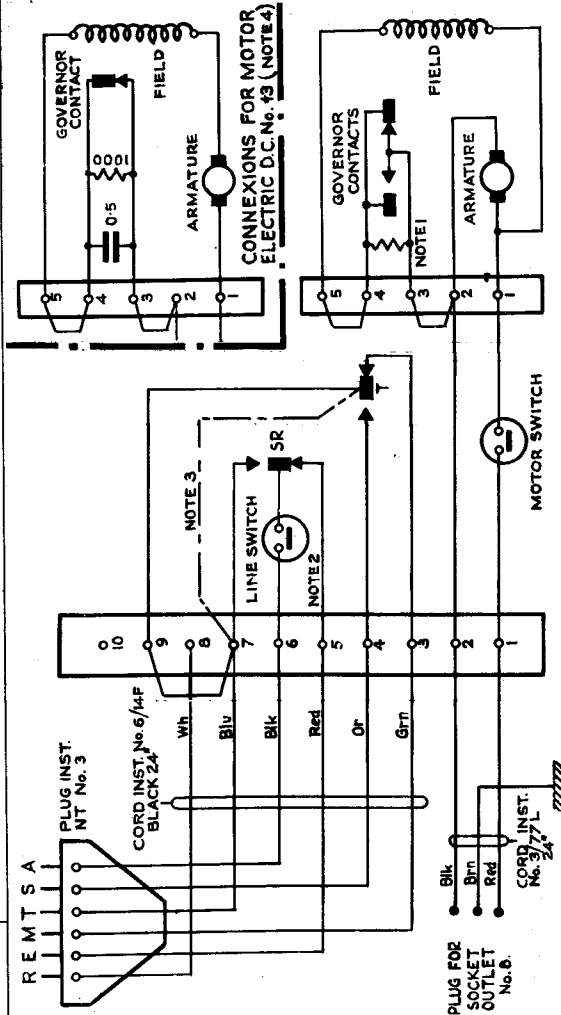
TELEPRINTER AUTO-TRANSMITTER No. 1B MARK I

TG (L) 852

PAGE 1
ISSUE G

NOTES:-

1. THIS RESISTOR IS 1000 Ω FOR 100-110V. D.C AND 150-170 V.D.C., OR 3000 Ω FOR 230-250V.D.C.
2. THE LINE SWITCH IS NOT FITTED TO MACHINES MANUFACTURED SINCE 1942.
3. ON MACHINES MANUFACTURED PRIOR TO 1943 THE TONGUE IS CONNECTED TO TERMINAL 7 (SEE DOTTED CONNEXION) INSTEAD OF TERMINAL 5 AND THE STRAP BETWEEN TERMINALS 7&9 IS OMITTED.
4. MOTOR ELECTRIC D.C. No. 13 SHOULD NOT BE USED WITHOUT SPECIAL AUTHORITY FROM THE E-IN-C (TG BRANCH)



P.O.E.D.
S. BCH.

PAPER — W
CIRCULATION: —
GENERAL

ISSUE	DESCRIPTION	DATE
G	NEW FORMAT AND NOTE 1 AMENDED	31-1-67
F	AND 1 COMBINED AND REVERTED TO TG (L) 852 REF. TO TRANSMITTER No. 1A DELETED	19-10-46
	H. G. D.	22-12-32