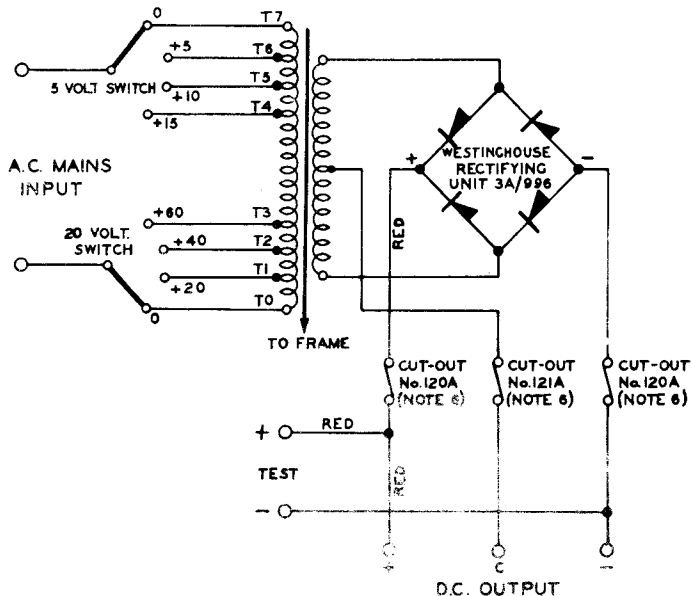


RECTIFIER No.22 (MK.4)

(TO PROVIDE D.C. SUPPLY FOR TELEPRINTER MOTOR FROM A.C. MAINS)

TG(L)802/1

5-11-46



NOTES:-

- FOR INPUT 80-140V, 40-60 C/S, USE RECTIFIER No.22A.
 " " 200-250V, 20-30 C/S, " " No.22B.
 " " 160-280V, 40-60C/S, " " No.22C.
- ALL WIRING IN CABLE, POWER, 660V, 0.002 SQ. INS, BLACK, UNLESS OTHERWISE INDICATED.
- EARTHING: NO EARTH TERMINAL HAS BEEN PROVIDED, BUT THE BOLTS AT THE ENDS OF THE TERMINAL STRIP CONNECT WITH THE FRAME OF THE RECTIFIER. EARTH LEADS SHOULD BE TERMINATED ON THESE BOLTS. (SEE NOTE 7)
- OUTPUT ADJUSTMENT: SET BOTH SWITCHES TO "0" BEFORE SWITCHING ON POWER. ADJUST OUTPUT TO 107.5 ± 2.5 VOLTS (WITH MOTOR RUNNING) IN STEPS OF 5V. ONLY. ADVANCE 20V. SWITCH ONE STEP, ONLY IF "15V." POSITION ON 5V. SWITCH IS INSUFFICIENT, AND AFTER RESTORING 5V. SWITCH TO "0".
- VOLTAGE MEASUREMENTS SHOULD BE MADE WITH A DETECTOR No. 4 (FITTED WITH TWO $10,000\Omega$ SERIES RESISTORS) ACROSS THE "TEST" TERMINALS.
- FUSES:
 CUT-OUTS No. 120A: WIRE FUSE, NICKEL SILVER, 6.2 MILS.
 CUT-OUTS No. 121A: FUSE No. 1/1.
- EXTERNAL WIRING TO BE IN ACCORDANCE WITH TG(L) 819.

CIRCULATION

Suffix

Amend.

PAPER

W