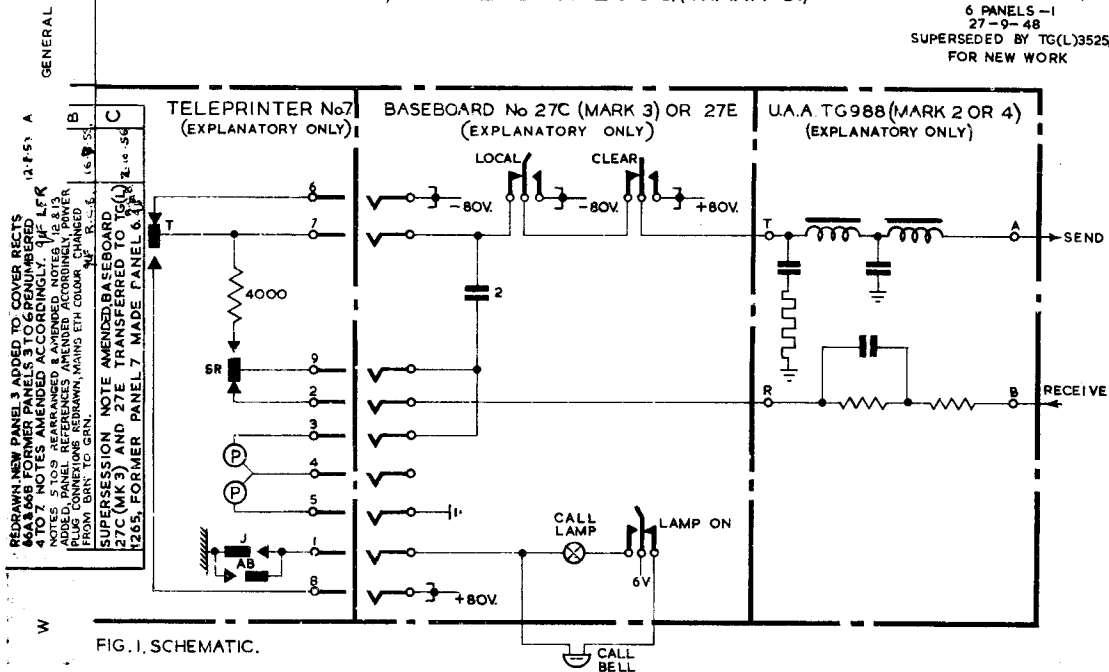


## EQUIPMENT, TABLE DTN 2000(MARK 3).

TG(L)3525/2

6 PANELS -1  
27-9-48  
SUPERSEDED BY TG(L)3525/3  
FOR NEW WORK

TG(L) 3525/2

6 PANELS - 2

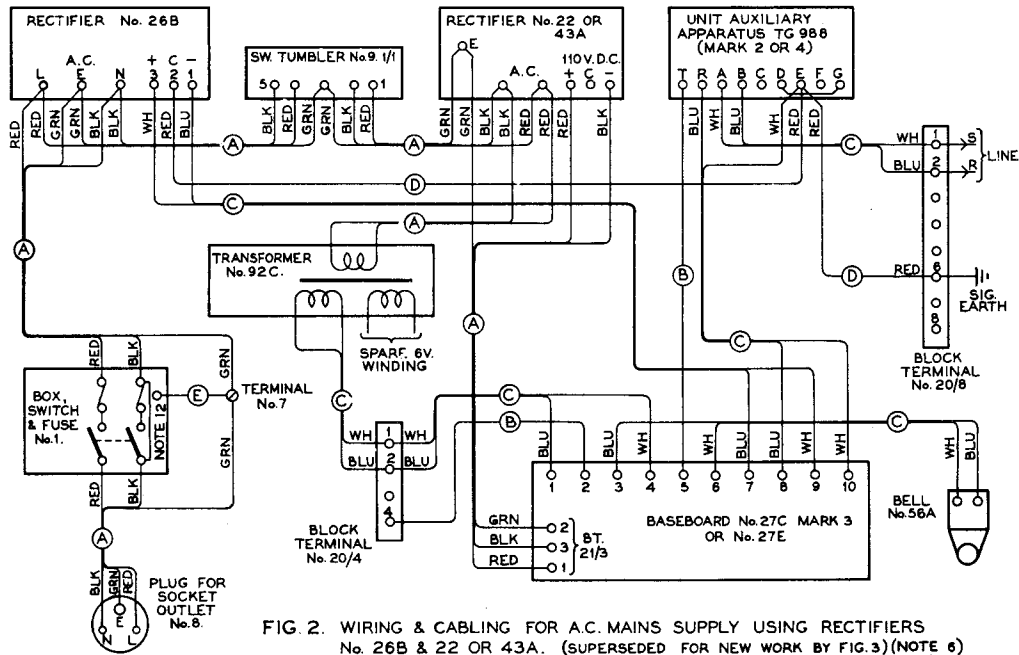


FIG. 2. WIRING & CABLING FOR A.C. MAINS SUPPLY USING RECTIFIERS No. 26B & 22 OR 43A. (SUPERSEDED FOR NEW WORK BY FIG. 3) (NOTE 6)

# EQUIPMENT TABLE DTN 2000 (MARK 3)

TG(L) 3525/2  
6 PANELS-3

12-57 A  
16-7-55 B  
2-10-56 C

GEN.

SEE PANEL 1  
SEE PANEL 2  
SEE PANEL 3

Amend

FATER W

LFR  
R.S.G.  
R.C.B.

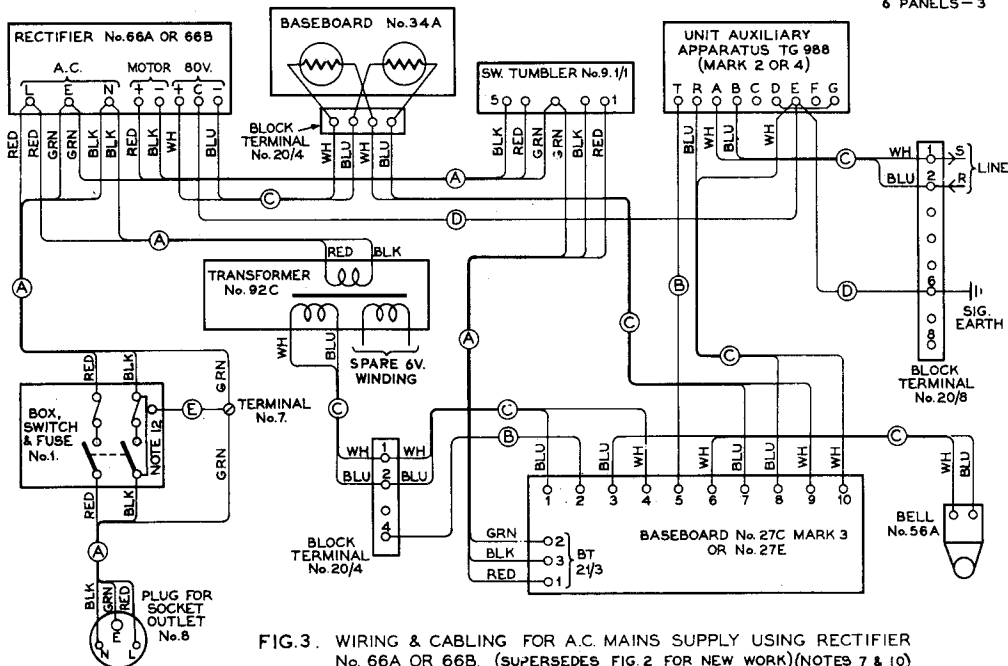


FIG. 3. WIRING & CABLING FOR A.C. MAINS SUPPLY USING RECTIFIER No. 66A OR 66B. (SUPERSEDES FIG. 2 FOR NEW WORK) (NOTES 7 & 10)

TG(L) 3525/2

6 PANELS - 4

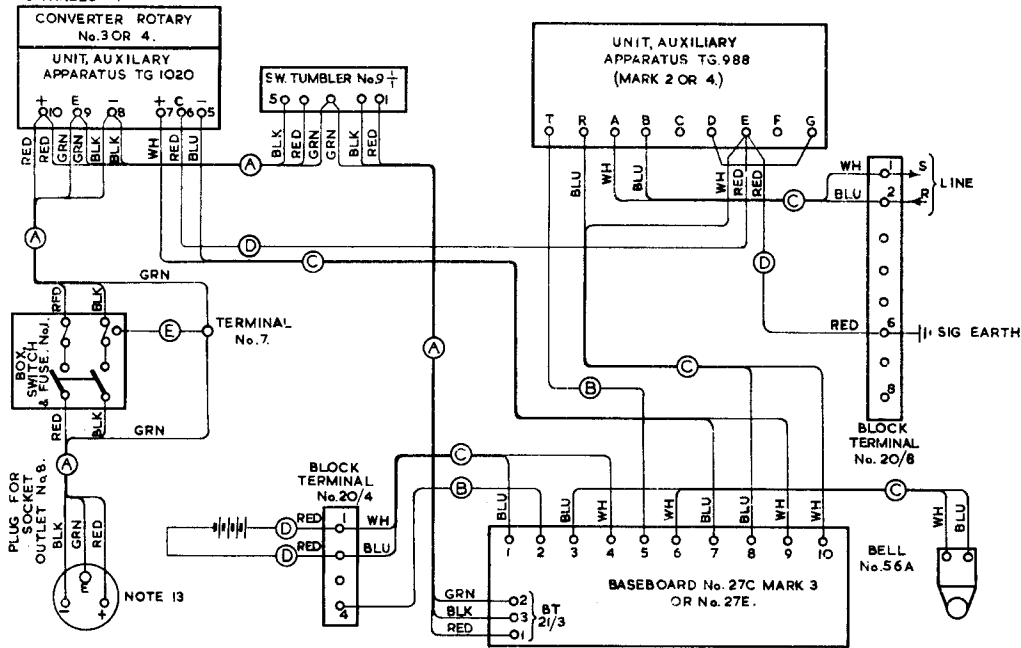


FIG. 4. WIRING & CABLING FOR D.C. MAINS SUPPLY. (NOTE 8)



# TG(L) 3525/2

6 PANELS-6  
27-9-48

## NOTES:-

1. THIS EQUIPMENT TABLE MAY BE USED WITH EITHER A BASEBOARD No.27C (MARK 3) OR A BASEBOARD No.27E. THE CLEARING KEY IN THE BASEBOARD No.27E IS OF THE AUTOMATIC TYPE WHICH TAKES 5 SECONDS TO RESTORE.
2. FOR SCHEMATIC WIRING OF TELEPRINTER No.7 SEE DGM. TG(L) 1101/O OR/1.  
FOR RECTIFIER No.22 SEE DGM. TG(L) 802.  
(FOR 43A SEE DGM. TG(L) 2024)  
FOR RECTIFIER No.26B SEE DGM. TG(L) 1058.  
FOR U.A. TG 1020 SEE DGM. TG(L) 1020  
FOR U.A. TG 988 MK 2 OR 4 SEE DGM. TG(L) 988/1.  
FOR RECTIFIER No.66A SEE DGM. TG(L) 2055.  
FOR RECTIFIER No.66B SEE DGM. TG(L) 2070.  
FOR BASEBOARD No.27C MARK 3 AND BASEBOARD No.27E SEE DGM. TG(L) 1265.
3. CABLE DESIGNATIONS:-
  - (A) CORD FLEXIBLE 250V, T.R.S., 3 CORE, O-0010 SQ. INCH.
  - (B) CABLE E AND C CORE 1 PAIR/10. BUNCHED.
  - (C) CABLE E AND C CORE 1 PAIR/10.
  - (D) WIRE F.P. IRV. 1 WIRE/20 OR WIRE P.V.C. No.1. 1 WIRE/20
  - (E) WIRE COPPER SOFT STRANDED 3/20.
4. FOR ADJUSTMENT OF B-LINE CURRENT SEE DGM. TG(L) 988/1.
5. FOR ADDITION OF END OF LINE LAMP JACK SEE DGM. TG(L) 3064.
6. CONCERNING FIG.2 ONLY.
  - (a) FOR MOUNTING OF ADDITIONAL COMPONENTS ON TABLE SEE DGM. TG 1807.
  - (b) BELL COILS TO BE IN PARALLEL.
7. CONCERNING FIG.3 ONLY.
  - (a) FOR ADDITIONAL DRILLING OF TABLE TO TAKE RECTIFIER No.66...SEE DGM. TG 1806.
  - (b) FOR MOUNTING OF ADDITIONAL COMPONENTS ON TABLE SEE DGM. TG 1808.
  - (c) BELL COIL TO BE IN PARALLEL.
8. CONCERNING FIG.4 ONLY.
  - (a) PRIMARY BATTERY TO CONSIST OF FOUR CELLS, LECLANCHE DR2 FITTED LOCALLY IN THE TRAY PROVIDED.
  - (b) BELL COILS TO BE IN SERIES.
9. CONCERNING FIG.5 ONLY.
  - (a) FOR MOUNTING OF ADDITIONAL COMPONENTS ON TABLE SEE DGM. TG 1720.
  - (b) INDICATES THAT THE TWO GREEN CONDUCTORS ARE TO BE TEED TOGETHER.
  - (c) BELL COILS TO BE IN SERIES.
  - (d) TERMINALS 1 & 4 TO BE STRAPPED.
10. EQUIPMENT WILL BE ISSUED WITH CABLING AS SHOWN IN FIG.3.
11. THIS DIAGRAM SHOULD ONLY BE USED FOR EQUIPMENT TABLE DTN.2000 MARK 3. FOR TABLE TELEPRINTER No.5A OR BENCH MOUNTING USE DGM. TG/TGW 1266 WITH DGM. TG/TGW 1267, 1268 OR 1269.
12. WHEN A.C. MAINS SUPPLY IS USED, THE FUSE AND SWITCH BLADE WHICH SERVE THE NEUTRAL WIRE MUST BE STRAPPED AS SHOWN, USING CABLE E.L., 250V...O-0020. SQ. IN., BLACK.
13. WHEN POWER SUPPLY IS 160V. OR MAINS D.C., WIRE COLOURS WILL BE RED FOR POSITIVE AND BLACK FOR NEGATIVE, AND THE LIVE AND NEUTRAL MARKINGS ON THE PLUG WILL BE IGNORED.

## NOTES:-

1. THIS EQUIPMENT TABLE MAY BE USED WITH EITHER A BASEBOARD No 27C (MARK 3) OR A BASEBOARD No 27E. THE CLEARING KEY IN THE BASEBOARD No 27E IS OF THE AUTOMATIC TYPE WHICH TAKES 5 SECONDS TO RESTORE.
2. FOR SCHEMATIC WIRING OF TELEPRINTER No.7 SEE DGM. TG (L) 1101/O OR/1.  
FOR RECTIFIER No.22 SEE DGM. TG (L) 802.  
(FOR 43A SEE DGM. TG (L) 2024)  
FOR RECTIFIER No.26B SEE DGM. TG (L) 1058.  
FOR U.A.A. TG 1020 SEE DGM. TG (L) 1020  
FOR U.A.A. TG 988 MK 2 OR 4 SEE DGM. TG (L) 988/1.  
FOR RECTIFIER No.66A SEE DGM. TG (L) 2055.  
FOR RECTIFIER No.66B SEE DGM. TG (L) 2070.  
FOR BASEBOARD No 27C MARK3 AND BASEBOARD No. 27E SEE DGM. TG (L) 1265.
3. CABLE DESIGNATIONS:-
  - (A) CORD FLEXIBLE 250V, T.R.S., 3 CORE, 0.0010 SQ INCH.
  - (B) CABLE E AND C CORE 1 PAIR/10 BUNCHED.
  - (C) CABLE E AND C CORE 1 PAIR/10.
  - (D) WIRE F.P. IRV. 1 WIRE/20 OR WIRE P.V.C. No.1 1 WIRE/20
  - (E) WIRE COPPER SOFT STRANDED 3/20.
4. FOR ADJUSTMENT OF B-LINE CURRENT SEE DGM. TG (L) 988/1.
5. FOR ADDITION OF END OF LINE LAMP JACK SEE DGM. TG (L) 3064.
6. CONCERNING FIG.2. ONLY.
  - (a) FOR MOUNTING OF ADDITIONAL COMPONENTS ON TABLE SEE DGM. TG 1807.
  - (b) BELL COILS TO BE IN PARALLEL.
7. CONCERNING FIG.3 ONLY.
  - (a) FOR ADDITIONAL DRILLING OF TABLE TO TAKE RECTIFIER No.66....SEE DGM. TG 1806.
  - (b) FOR MOUNTING OF ADDITIONAL COMPONENTS ON TABLE SEE DGM. TG 1808.
  - (c) BELL COIL TO BE IN PARALLEL.
8. CONCERNING FIG.4 ONLY.
  - (a) PRIMARY BATTERY TO CONSIST OF FOUR CELLS, LECLANCHE DR2 FITTED LOCALLY IN THE TRAY PROVIDED.
  - (b) BELL COILS TO BE IN SERIES.
9. CONCERNING FIG.5 ONLY.
  - (a) FOR MOUNTING OF ADDITIONAL COMPONENTS ON TABLE SEE DGM. TG 1720.
  - (b) INDICATES THAT THE TWO GREEN CONDUCTORS ARE TO BE TIED TOGETHER.
  - (c) BELL COILS TO BE IN SERIES.
  - (d) TERMINALS 1 & 4 TO BE STRAPPED.
10. EQUIPMENT WILL BE ISSUED WITH CABLING AS SHOWN IN FIG.3
11. THIS DIAGRAM SHOULD ONLY BE USED FOR EQUIPMENT TABLE DTN.2000 MARK 3. FOR TABLE TELEPRINTER No.5A OR BENCH MOUNTING USE DGM. TG/TGW 1266 WITH DGM. TG/TGW 1267, 1268 OR 1269.
12. WHEN A.C. MAINS SUPPLY IS USED, THE FUSE AND SWITCH BLADE WHICH SERVE THE NEUTRAL WIRE MUST BE STRAPPED AS SHOWN, USING CABLE E.L., 250V...0.0020. SQ IN., BLACK.
13. WHEN POWER SUPPLY IS 160V. OR MAINS D.C., WIRE COLOURS WILL BE RED FOR POSITIVE AND BLACK FOR NEGATIVE, AND THE LIVE AND NEUTRAL MARKINGS ON THE PLUG WILL BE IGNORED.

P.O.E.D.  
S. BCH.PAPER:-W  
CIRCULATION:-  
GENERAL

D	NEW FORMAT			
C	BASEBOARD 27C(MKS) AND 27E TRANSFERRED TO TG(L)1265 SUPERSESSION NOTE AMENDED	J.C.F.	R.C.B.	31-1-67
B	NOTES AMENDED. POWER PLUG CONNECTIONS REARRANG. MAINS E.T.H. COLOUR CHANGED. WAS GRN.	J.C.F.	R.C.B.	2-10-56
	H.W.S. GT R.N.R.			16-7-55
				27-9-48

FIG. 1. SCHEMATIC.

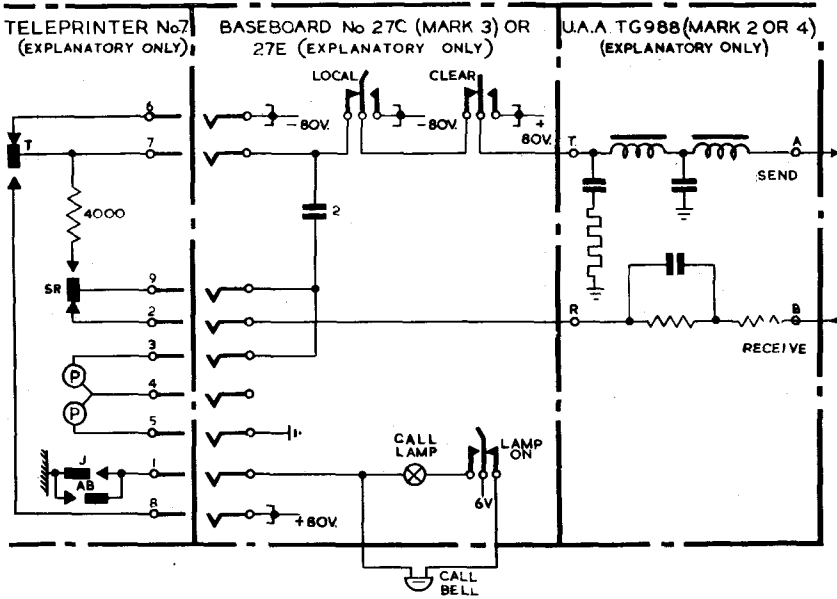


FIG. 2. WIRING & CABLING FOR A.C. MAINS SUPPLY USING RECTIFIERS No. 26B & 22 OR 43A. (SUPERSEDED FOR NEW WORK BY FIG. 3) (NOTE 6)

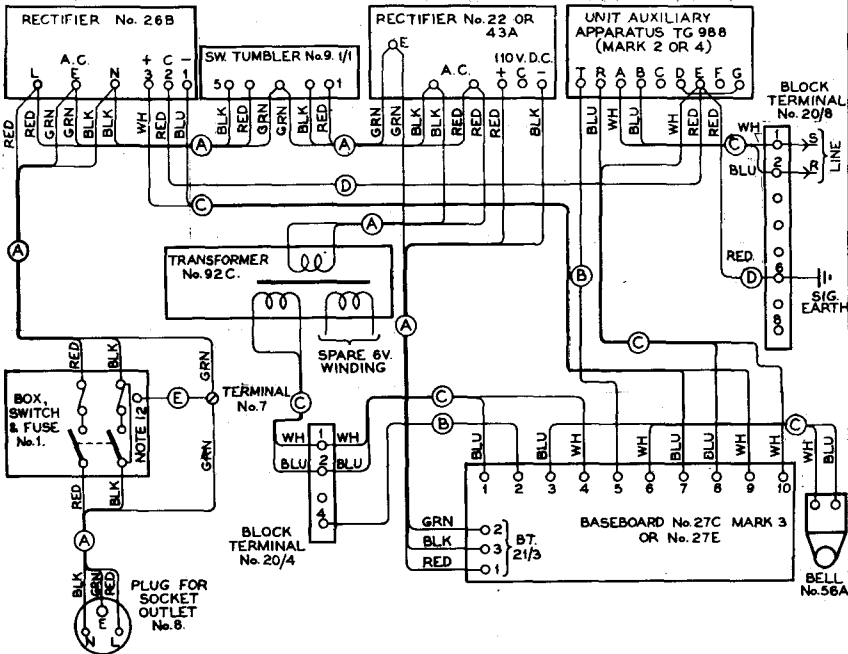




FIG. 3. WIRING & CABLING FOR A.C. MAINS SUPPLY USING RECTIFIER  
 No. 66A OR 66B (SUPERSEDES FIG. 2 FOR NEW WORK)(NOTES 7 & 10)

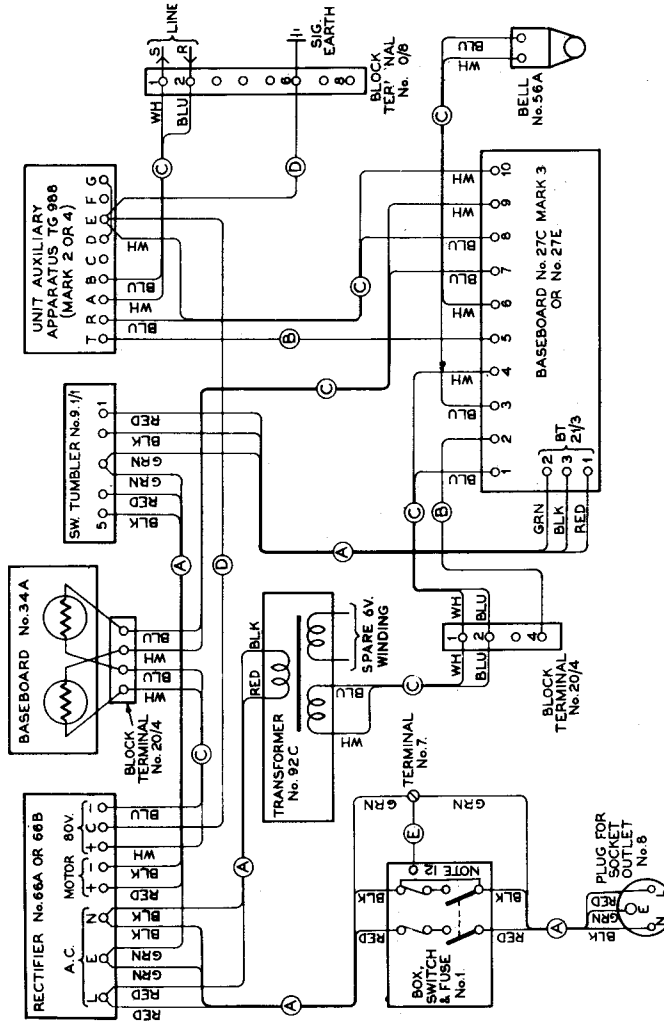


FIG. 4. WIRING & CABLING FOR D.C. MAINS SUPPLY (NOTE 8)

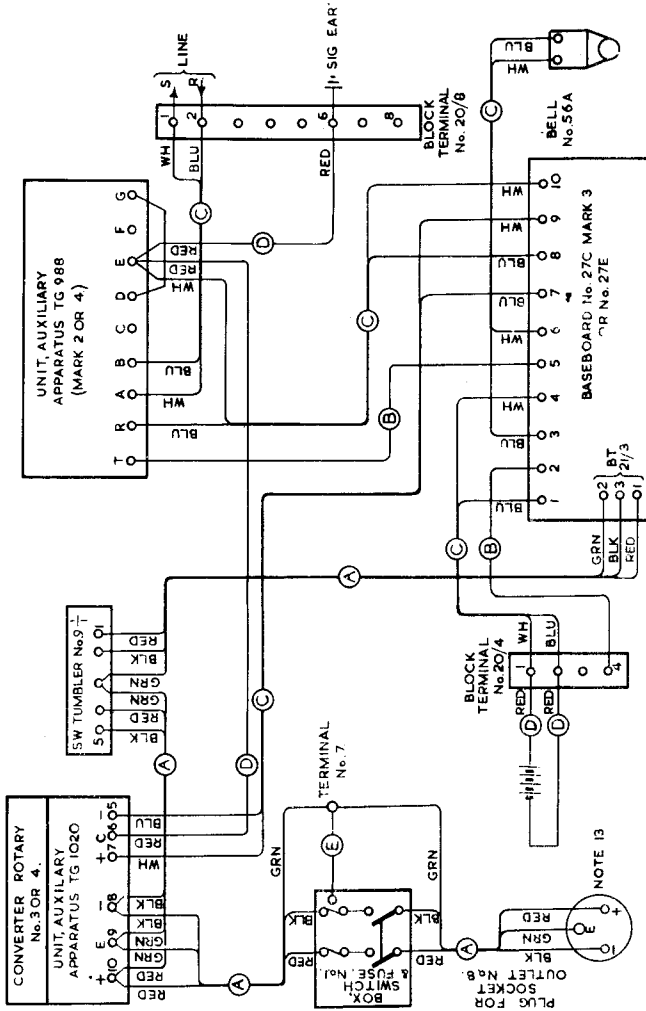


FIG 5 WIRING & CABLING FOR 80 + 80V SUPPLY (NOTE 9)

