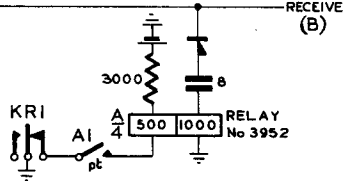
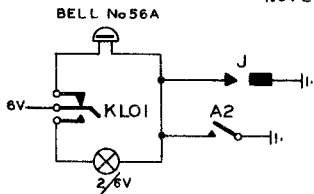
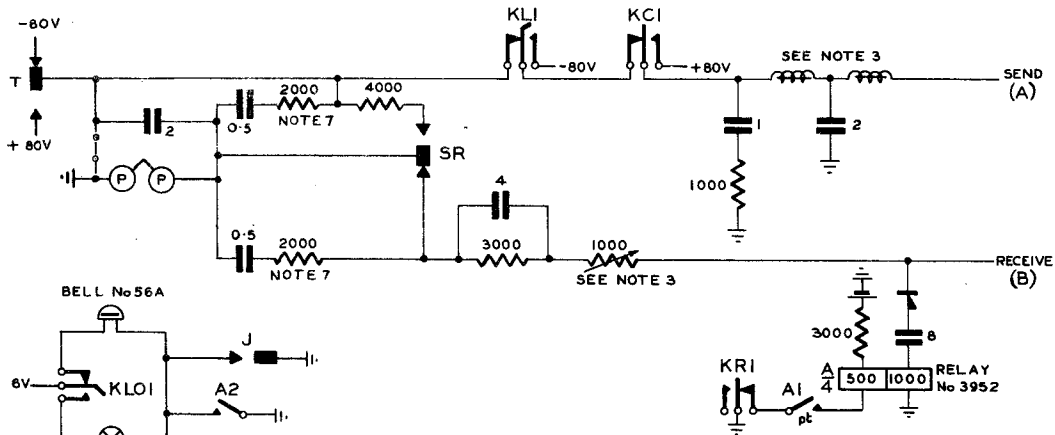


P.W. TELEPRINTER CIRCUIT

EQUIPMENT TABLE DTN 2000 (MK I OR II) MODIFIED FOR USE AS
OUTSTATION FROM SWITCHBOARD TG3517

TG(L)3507
4 PANELS - I



KEY CODINGS		
KEY No	CODE	FUNCTION
174	$\frac{KL}{2}$ $\frac{KC}{2}$	LOCAL TELEPRINTER TO LINE CLEAR
174	$\frac{KLO}{2}$ $\frac{KR}{2}$	LAMP ON J BELL ON RELEASE

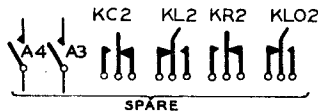


FIG.1 SCHEMATIC.

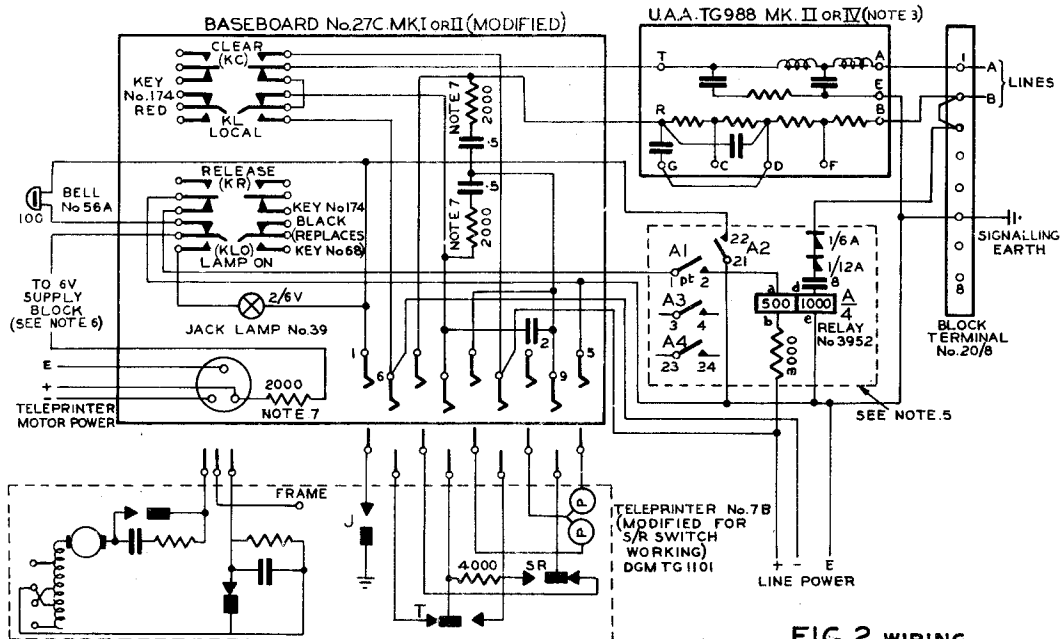
Spare contacts of Relay Added. New Symbols for Teleprinter
 Key contacts corrected. Key table redrawn. K.E.D. R.H.W. 16-11-47
 Redrawn Made I.L. Formerly TG3507 Renumbered TG(L)3507
 Date Added

Amendt.

PAPER

TG(L) 3507

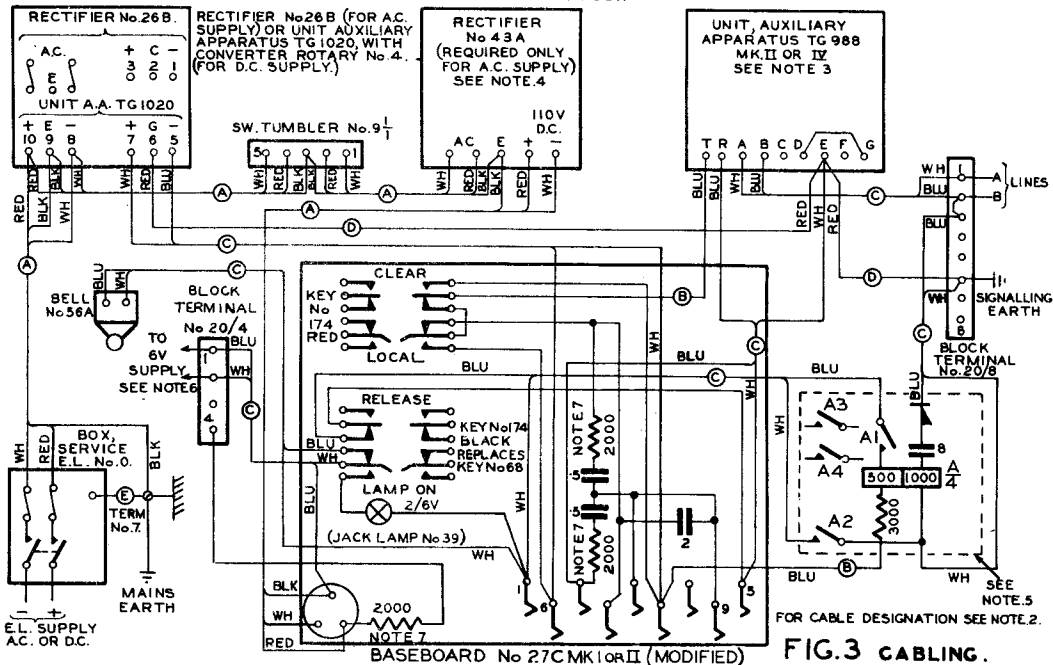
4 PANELS-2



P. W. TELEPRINTER CIRCUIT.

EQUIPMENT TABLE DTN 2000(MK I OR II) MODIFIED FOR USE AS
OUTSTATION FROM SWITCHBOARD TG 3517

TG(L)3507
4 PANELS-3



TG(L)3507

4 PANELS-4

NOTES:-

- FOR SCHEMATIC WIRING OF TELEPRINTER No.7. (MODIFIED FOR SEND-RECEIVE SWITCHWORKING) SEE TG(L)1101
" INTERNAL CONNEXIONS OF RECTIFIER No.43A SEE TG(L)2024
" " " " " " No.26B " TG(L)1058
" " " " " U.A.A TG1020 SEE TG(L)1020
" EQUIPMENT TABLE DTN2000 SEE TG(L)3525/0 OR /1
- THE VARIOUS CABLES ARE DESIGNATED AS FOLLOWS
 - CORD, FLEXIBLE E.L.250V, CLASS D3, 0.001 SQ.INS.
 - CABLE, E & C CORE 1 WIRE/20
 - C " " " " 1 PAIR/10
 - D WIRE, E & F. P. 1 WIRE/20
 - E WIRE, COPPER, SOFT, STRANDED 3/20
INTERNAL WIRING OF BASEBOARD TO BE WIRE, SWITCHBOARD, E.T.S & C.C. 1 WIRE/9 $\frac{1}{4}$ BLUE.
- U.A.A TG 988 (MARK II OR IV) DGM TG(L)988/1
ON 80V SYSTEMS: STRAP D & G TAGS B & D SHOULD BE STRAPPED IF THE B LINE CURRENT IS LESS THAN 16 M.A. WITH THE FULL 4000 OHMS IN CIRCUIT.
ON 40V SYSTEMS: TAGS R & C SHOULD BE STRAPPED AND IF THE B LINE CURRENT IS STILL LESS THAN 16 M.A. STRAP B & F.
FOR CORRESPONDING CONNEXIONS OF U.A.A TG988(MARK I) SEE TG(L)988/0.
- THE POWER CABLING WHICH IS CONTINUOUS FOR D.C. SUPPLY, SHOULD BE OPENED AT THE JOINT PROVIDED FOR INSERTION OF RECTIFIER No.43A. WHEN SUPPLY IS A.C.
- KEY No.68 IN BASEBOARD No.27C TO BE REPLACED BY KEY No.174 AND WIRING REARRANGED AS PER FIGS 3 & 4 RELAY No.3952 TO BE MOUNTED ON A MOUNTING No.151/2A WITH BRACKET, MOUNTING AZ AND RELAY-COVER AP AND FITTED, ALONG WITH THE RESISTOR, COIL No.12 3000 OHMS, 2 CONDENSERS M.C.No.103 AND RECTIFIER ELEMENTS Nos. 1/6A AND 1/12A, ON A BASEBOARD ACCOMMODATED IN A CONVENIENT POSITION FOR ADJUSTMENT OF THE RELAY.
- 8V. SUPPLY TO BE WIRED IN THE SAME WAY AS ON DIAGRAM TG(L)3525/0 OR 3525/1
- 0.5 μ F + 2000 Ω SPARK QUENCHES PROVIDED ONLY ON BASEBOARD No.27C MK.I
—○—○— INDICATES ALTERNATIVE CONNEXION FOR 2 μ F CONDENSER ON MK.I. BASEBOARD.
2000 Ω RESISTOR AND ASSOCIATED WIRING PROVIDED ONLY ON MK II BASEBOARD

P.W. TELEPRINTER CIRCUIT

EQUIPMENT TABLE DTN 2000(MK I or II) MODIFIED TO INDICATE RECEIPT OF ACKNOWLEDGE SIGNAL

TG(L)3507

PAGE 1-4
ISSUE F

NOTES:-

1. FOR SCHEMATIC WIRING OF TELEPRINTER No.7. SEE TG(L) 1101.
 - " INTERNAL CONNEXIONS OF RECTIFIER No 43A SEE TG(L)2024
 - " " " " " No 26B " TG(L)1058
 - " " " " " U.A. TG 1020 SEE TG(L)1020
 - " EQUIPMENT TABLE DTN2000 SEE TG(L)3525/0, /1, /2 OR /3.
2. THE VARIOUS CABLES ARE DESIGNATED AS FOLLOWS
 - (A) CORD, FLEXIBLE E.L. 250V, CLASS D3, 0.001 SQ. INS
 - (B) CABLE, E & C CORE 1 WIRE / 20
 - (C) " " " " " 1 PAIR / 10
 - (D) WIRE, E & F. 1 WIRE / 20
 - (E) WIRE, COPPER, SOFT, STRANDED 3/20

INTERNAL WIRING OF BASEBOARD TO BE WIRE, SWITCHBOARD, E.T.S & C.C. 1 WIRE / 9/4 BLUE, OR EQUIVALENT.
3. U.A. TG 988 (MARK II OR II) DGM TG(L)988/1
 - ON 80V SYSTEMS: STRAP D & G TAGS B & D SHOULD BE STRAPPED IF THE B LINE CURRENT IS LESS THAN 16 M.A. WITH THE FULL 4000 OHMS IN CIRCUIT.
 - ON 40V SYSTEMS: TAGS R & C SHOULD BE STRAPPED AND IF THE B LINE CURRENT IS STILL LESS THAN 16 M.A. STRAP B & F.
 - FOR CORRESPONDING CONNEXIONS OF U.A. TG 988 (MARK I) SEE TG(L)988/0.
4. THE POWER CABLING WHICH IS CONTINUOUS FOR D.C. SUPPLY, SHOULD BE OPENED AT THE JOINT PROVIDED FOR INSERTION OF RECTIFIER No.43A. WHEN SUPPLY IS A.C.
5. KEY No.68 IN BASEBOARD No.27C TO BE REPLACED BY KEY No.174 AND WIRING REARRANGED AS PER FIGS 3 & 4 RELAY No.3952 TO BE MOUNTED ON A MOUNTING No.151/2A WITH BRACKET, MOUNTING AZ AND RELAY-COVER AP AND FITTED, ALONG WITH THE RESISTOR, COIL No.12, 3000 OHMS, 2 CONDENSERS M.C.No.103 AND RECTIFIER ELEMENTS No. 1/6A AND 1/2A, ON A BASEBOARD ACCOMMODATED IN A CONVENIENT POSITION FOR ADJUSTMENT OF THE RELAY.
6. 6V. SUPPLY TO BE WIRED IN THE SAME WAY AS ON DIAGRAM TG(L) 3525/0, /1, /2 OR /3.
7. 0.5µF + 2000Ω SPARK QUENCHES PROVIDED ONLY ON BASEBOARD No 27 C MK I
 - INDICATES ALTERNATIVE CONNEXION FOR 2µF CONDENSER ON MK I. BASEBOARD.
 - 2000Ω RESISTOR AND ASSOCIATED WIRING PROVIDED ONLY ON MK II BASEBOARD

P.O.E.D.
S. BCH.

PAPER-
CIRCULATION:-

ISSUES			
F	NEW FORMAT.		31-1-67
E	TITLE AMENDED W.G. L.F.P.		12-4-65
D	REDRAWN MADE LL. FORMERLY TG 3507 RENUMBERED TG(L) 3507 NOTE 7 ADDED .H.W.S. E.D.		8-8-69
	E.G.F.		23-11-59

FIG. 1 SCHEMATIC.

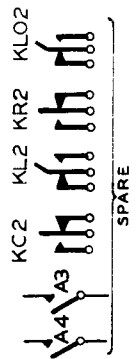
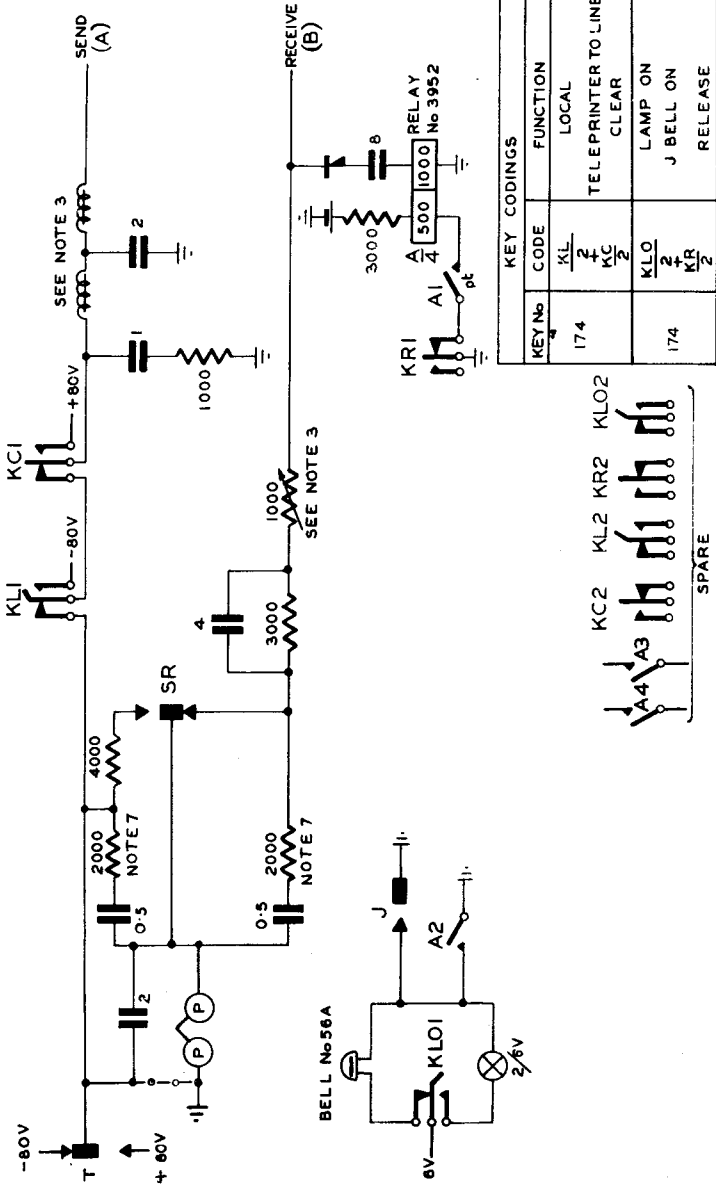
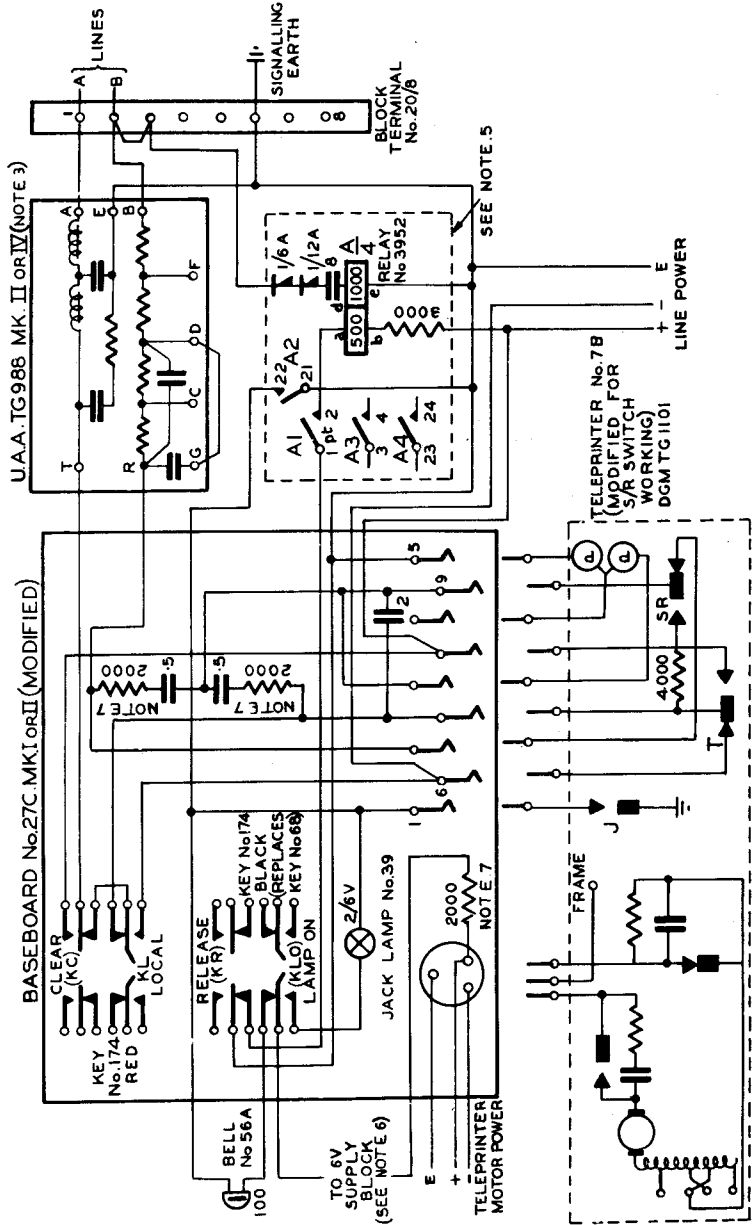


FIG. 2. WIRING.



P.W. TELEPRINTER CIRCUIT
 EQUIPMENT TABLE DTN2000 (MKI OR II) MODIFIED TO
 INDICATE RECEIPT OF ACKNOWLEDGE SIGNAL

TG(L) 3507

PAGE 1-4
 ISSUE G

NOTES:-

1. FOR SCHEMATIC WIRING OF TELEPRINTER No.7 SEE TG(L) 1101.
 " " " " " " " " No.43A SEE TG (L) 2024
 " " " " " " " " No.26B " TG (L) 1058
 " " " " " " U.A.A. TG1020 " TG (L) 1020
 " EQUIPMENT TABLE DTN2000 SEE TG L 3525/O,1,1/2 OR/3.
2. THE VARIOUS CABLES ARE DESIGNATED AS FOLLOWS
 (A) CORD, FLEXIBLE E.L. 250V., CLASS D3, 0-001 SQ.INS.
 (B) CABLE, E&C CORE 1 WIRE / 20
 (C) " " " " " " 1 PAIR / 10
 (D) WIRE, E&F.R 1 WIRE/20
 (E) WIRE, COPPER, SOFT, STRANDED 3/20
 INTERNAL WIRING OF BASEBOARD TO BE WIRE, SWITCHBOARD, E.T.S. & C.C. 1 WIRE/9 $\frac{1}{4}$ BLUE, OR EQUIVALENT.
3. U.A.A. TG988 (MARK II OR III) DGM TG(L) 988/1
 ON 80V. SYSTEMS: STRAP D&G TAGS B&D SHOULD BE STRAPPED IF THE B LINE CURRENT IS LESS THAN 16M.A. WITH THE FULL 4000 OHMS. IN CIRCUIT.
 ON 40V. SYSTEMS: TAGS R&C SHOULD BE STRAPPED AND IF THE B LINE CURRENT IS STILL LESS THAN 16M.A. STRAP B&F.
 FOR CORRESPONDING CONNEXIONS OF U.A.A. TG988 (MARK I) SEE TG(L) 988/O.
4. THE POWER CABLING WHICH IS CONTINUOUS FOR D.C. SUPPLY, SHOULD BE OPENED AT THE JOINT PROVIDED FOR INSERTION OF RECTIFIER No. 43A. WHEN SUPPLY IS A.C.
5. KEY No.68 IN BASEBOARD No.27C TO BE REPLACED BY KEY No.174 AND WIRING REARRANGED AS PER FIGS 3 & 4 RELAY No.3952 TO BE MOUNTED ON A MOUNTING No.151/2 WITH BRACKET, MOUNTING AZ AND RELAY-COVER AP AND FITTED, ALONG WITH THE RESISTOR. COIL No.12 3000 OHMS. 2 CAPACITORS M.C. No.103 AND RECTIFIER ELEMENTS Nos. 1/6A AND 1/12A, ON A BASEBOARD ACCOMMODATED IN A CONVENIENT POSITION FOR ADJUSTMENT OF THE RELAY. WHEN RECTIFIER ELEMENTS Nos. 1/6AZ AND 1/12AZ ARE USED A RESISTOR, CARBON No.15GD 100K MUST BE CONNECTED IN PARALLEL WITH THE RECTIFIER ELEMENTS.
6. 6V. SUPPLY TO BE WIRED IN THE SAME WAY AS ON DIAGRAM TG(L) 3525/O, 1, 1/2 OR /3.
7. 0.5 μ F+2000 Ω SPARK QUENCHES PROVIDED ONLY ON BASEBOARD No.27C MK.I
 —o—o— INDICATES ALTERNATIVE CONNEXION FOR 2 μ F CONDENSER ON MK.I BASEBOARD
 2000 Ω RESISTOR AND ASSOCIATED WIRING PROVIDED ONLY ON MK.II BASEBOARD.

P.O.E.D.
 S. BCH.

PAPER-
 CIRCULATION:-

ISSUES	G	NOTE 5 AMENDED TO COVER USE OF 1/6AZ + 1/12 AZ RECTIFIER ELEMENT	E.C.	29-470
	F	NEW FORMAT	<i>John</i>	31-1-67
	E	TITLE AMENDED W.G. L.F.R		12-4-55
	D	REDRAWN MADE LL. FORMERLY TG 3507 RENUMBERED TG(L) 3507. NOTE 7 ADDED W.W.S. E.B.		8-8-49
		E.G.F.		23-11-59

FIG. 1 SCHEMATIC

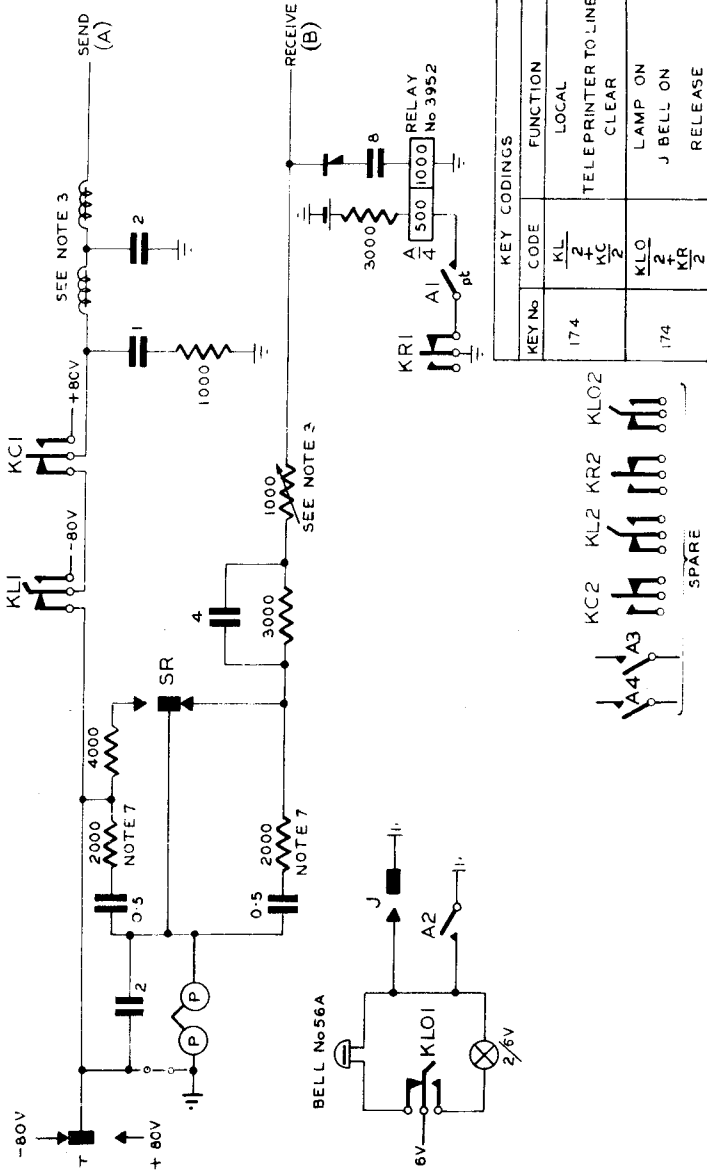


FIG.2. WIRING.

