



# EQUIPMENT TABLE DTN. 2000 MARKS 1 & 2

Addition of End of Line Lamp Jack.

TG(L) 3064.  
2 Panels-2.

Mark 1 Table, AC or DC. Mains Supply.

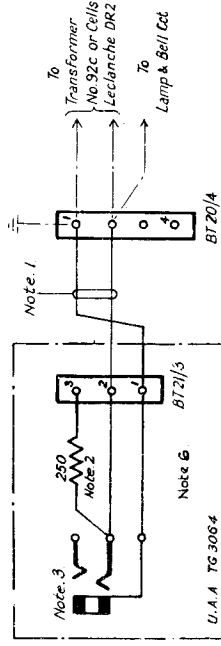


FIG. 1

Mark 2 Table, AC or DC. Mains Supply.

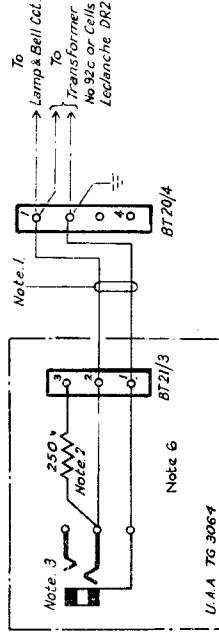


FIG. 2

Mark 1 or 2 Table, 80+80v Supply.

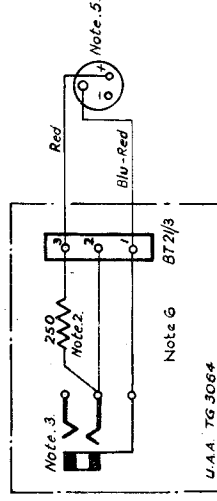


FIG. 3

# EQUIPMENT TABLE DTN 2000 MARKS 1 & 2

Addition of End of Line Lamp Jack

TG(L)3064

PAGE I  
ISSUE B

NOTES.

1. Cable E & C Core 1 pair /10.
2. Resistor Coil No.28, 250Ω (to be fitted only when required)
3. Jack No.300 B6 |N
4. ———— Indicates existing cabling. See diagram TG(L)3525/1.  
 ———— " cabling to be added when End of Line Lamp Jack is fitted.
5. Represents Socket Outlet No.8 in Baseboard No.27C
6. Wire Tinned Copper No.20 S.W.G covered with Fish Spine Beads No.1. to be used for all the wiring inside the U.A.A. TG3064
7. Wire not otherwise marked to be Wire F.P. I.R.V 1 wire/20. or equivalent.

FIG. 1 Mark 1 Table, AC or DC Mains Supply.

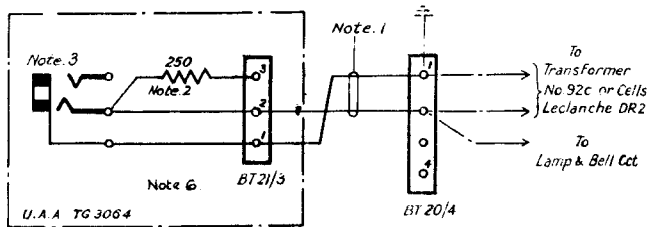


FIG. 2 Mark 2 Table, A.C. or D.C Mains Supply.

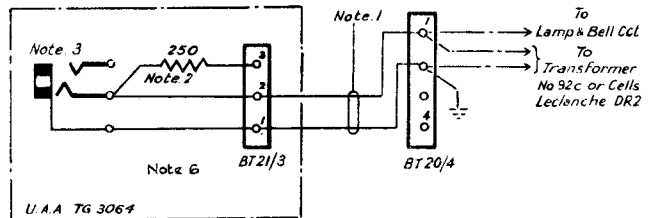
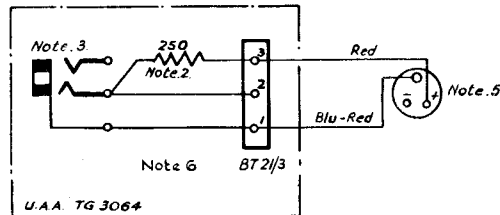


FIG. 3. Mark 1 or 2 Table, 80+80v Supply



P.O.E.D.  
S.BCH.

PAPER :- W  
CIRCULATION :-  
GENERAL

ISSUES	B	NEW FORMAT.			31-1-67	
	A	NOTES 5 & 6 AMENDED	A.G.	G.W.V.	L.F.R.	30-1-50
		H.W.S	R.N.R.			2-7-48