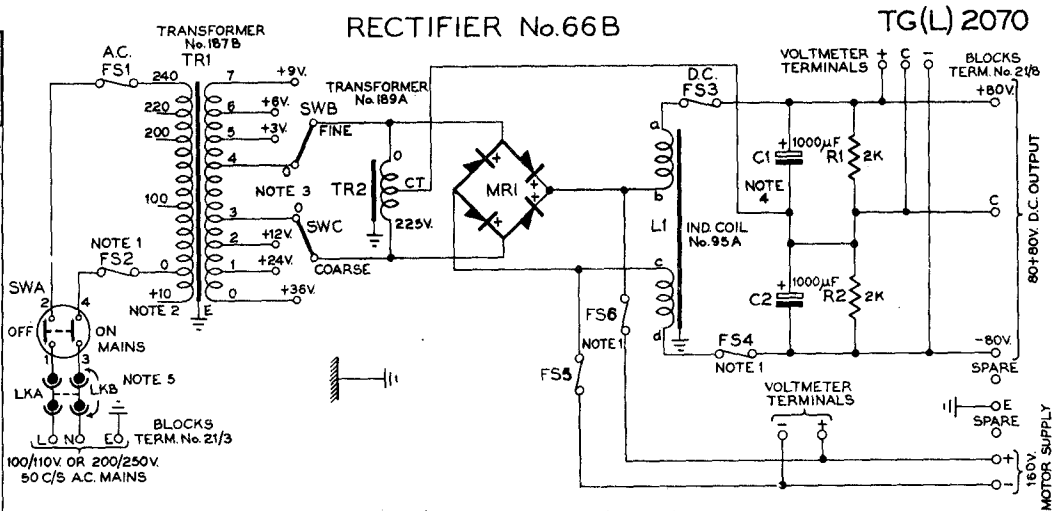
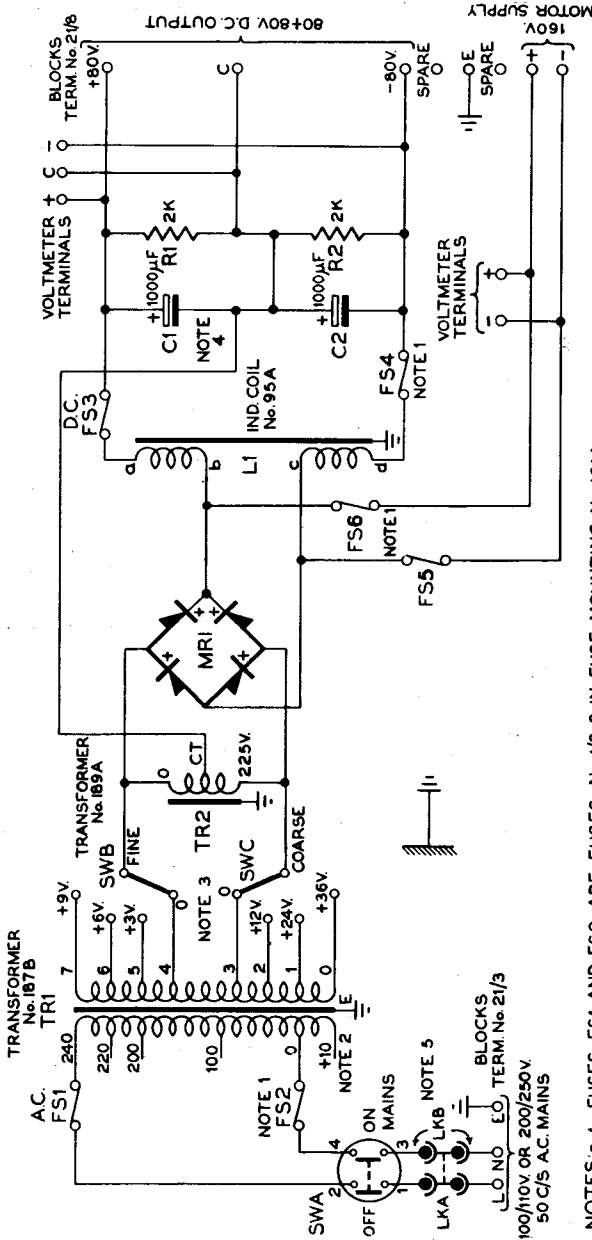


CIRCULATION	GENERAL
	Suffix
A	
30-2-53	
A.C. 6.	
LKA, LKB were PL-5K, B/T Terminals rearranged, SWA, SWB and SWC were SWB, SWC & SWD	
Amendt.	
PAPER	WHITE



NOTES:- 1. FUSES FS1 AND FS2 ARE FUSES No. 1/3-0 IN FUSE MOUNTING No. 101A.
 " FS3 " FS4 " " No. 1/1-5 " " " No. 101A.
 " FS5 " FS6 " " No. 1/1-5 " " " No. 101A.

- THE 10 VOLT PRIMARY TAPPING PROVIDES FOR INTERMEDIATE INPUT VOLTAGES OF 110, 210, 230 AND 250 WHEN USED IN CONJUNCTION WITH 100, 200, 220 AND 240 VOLT TAPPINGS RESPECTIVELY.
- WHEN MAKING INITIAL ADJUSTMENTS SET BOTH TAPPING SWITCHES TO '0' BEFORE SWITCHING ON POWER. ADJUST OUTPUT VOLTAGE TO 160 ± 2 VOLTS (WITH LOAD CIRCUIT CONNECTED) IN STEPS OF 3 VOLTS AND NOT BY 12 VOLT STEPS. ONLY ADVANCE THE 12 VOLT SWITCH ONE POSITION IF THE 9 VOLT ADJUSTMENT ON SWB IS INSUFFICIENT, AND AFTER RESTORING SWB TO '0'.
- CAPACITORS C1 & C2 ARE CAPACITORS ELECTROLYTIC No. 3103.
- LKA & LKB ARE SOCKET & PLUG ISOLATORS (AUTOMATICALLY CONNECTED WHEN COVER IS ON).



NOTES:- 1. FUSES FS1 AND FS2 ARE FUSES No.1/3-0 IN FUSE MOUNTING No.101A.
 FS4 " " No.1/1-5 " " No.101A.
 FS5 " " No.1/1-5 " " No.101A.

2. THE 10 VOLT PRIMARY TAPPING PROVIDES FOR INTERMEDIATE INPUT VOLTAGES OF 110, 210, 230 AND 250 WHEN USED IN CONJUNCTION WITH 100, 200, 220 AND 240 VOLT TAPPINGS RESPECTIVELY.
3. WHEN MAKING INITIAL ADJUSTMENTS SET BOTH TAPPING SWITCHES TO '0' BEFORE SWITCHING ON POWER. ADJUST OUTPUT VOLTAGE TO 160±2 VOLTS (WITH LOAD CIRCUIT CONNECTED) IN STEPS OF 3 VOLTS AND NOT BY 12 VOLT STEPS. ONLY ADVANCE THE 12 VOLT SWITCH ONE POSITION IF THE 9 VOLT ADJUSTMENT ON SWB IS INSUFFICIENT, AND AFTER RESTORING SWB TO '0'.
4. CAPACITORS C1 & C2 ARE CAPACITORS ELECTROLYTIC No. 3103.
5. LKA & LKB ARE SOCKET & PLUG ISOLATORS (AUTOMATICALLY CONNECTED WHEN COVER IS ON).

P.O.E.D.
 T.G. BCH.
 PAPER:- W
 CIRCULATION-
 GENERAL

ISSUE			
B	NEW FORMAT		
A	LKA-LKB WERE PL-SK, B/T TERMINALS REARRANGED SWA, SWB, SWC WERE SWB, SWC & SWD	<i>mm</i>	11.2.66
	R. N. RENTON		30.3.53
			1.1.53