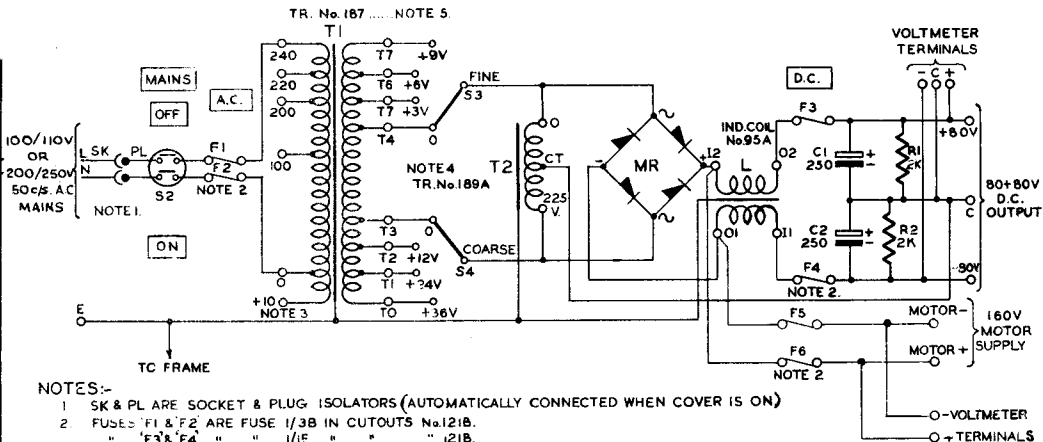


CIRCULATION
SUFF. X
GENERAL

A
B
C

GLC2 WERE 200-F MOTOR SUPPLY V/M TERMINALS
IF THE COMPONENT TITLES ADDED CHECK
TERMINALS NUMBERED FORMERLY TO NOTE 5
ADDED.
TO & SUPERSESSION NOTE ADDED.
SK & PL FORMERLY SWA, NOTE 1 AMND...
PAPER
WHITF



NOTES:-

- 1 SK & PL ARE SOCKET & PLUG ISOLATORS (AUTOMATICALLY CONNECTED WHEN COVER IS ON)
- 2 FUSES 'F1 & F2' ARE FUSE 1/3B IN CUTOUTS No.121B.
" 'F3 & F4' " " 1/1E " " " " 121B.
" 'F5 & F6' " " 1/2 " " " " 121B
3. THE 10 VOLT PRIMARY TAPPING PROVIDES FOR INTERMEDIATE INPUT VOLTAGES OF 110, 210, 230 AND 250 WHEN USED IN CONJUNCTION WITH 100, 200, 220 AND 240 VOLT TAPPINGS RESPECTIVELY
4. WHEN MAKING INITIAL ADJUSTMENTS SET BOTH TAPPING SWITCHES TO "0" BEFORE SWITCHING ON POWER. ADJUST OUTPUT VOLTAGE TO 150 ± 2 VOLTS (WITH LOAD CIRCUIT CONNECTED) IN STEPS OF 3 VOLTS AND NOT BY 12 VOLT STEPS. ONLY ADVANCE THE 12 VOLT SWITCH ONE POSITION IF THE 9 VOLT ADJUSTMENT ON S3 IS INSUFFICIENT, AND AFTER RESTORING S3 TO "0"
5. TRANSFORMER No.187A IN EARLIER MODELS, 187B IN LATER MODELS. CONNEXIONS IDENTICAL, 187B HAS LARGER WINDING T3-T4.