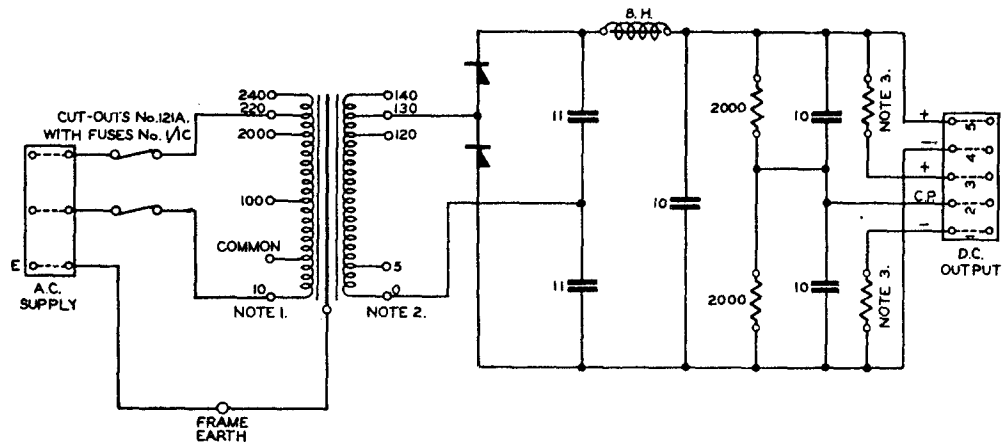


RECTIFIER No.45A.

TG(L)2030.

22-6-40.



NOTES:-

1. THE 10V. PRIMARY TAPPING PROVIDES FOR INTERMEDIATE INPUT VOLTAGES OF 110, 210, 230 AND 250 WHEN USED IN CONJUNCTION WITH OTHER TAPPINGS.
2. THE BEST SECONDARY TAPS ARE CHOSEN DURING ACCEPTANCE TESTS.
3. PROTECTIVE RESISTANCES ARE 250,000 OHMS MAXIMUM VALUE.