

DIMENSIONS OF WARD AND NUMBERING OF SIGNAL ELEMENTS. (NOTE 2)

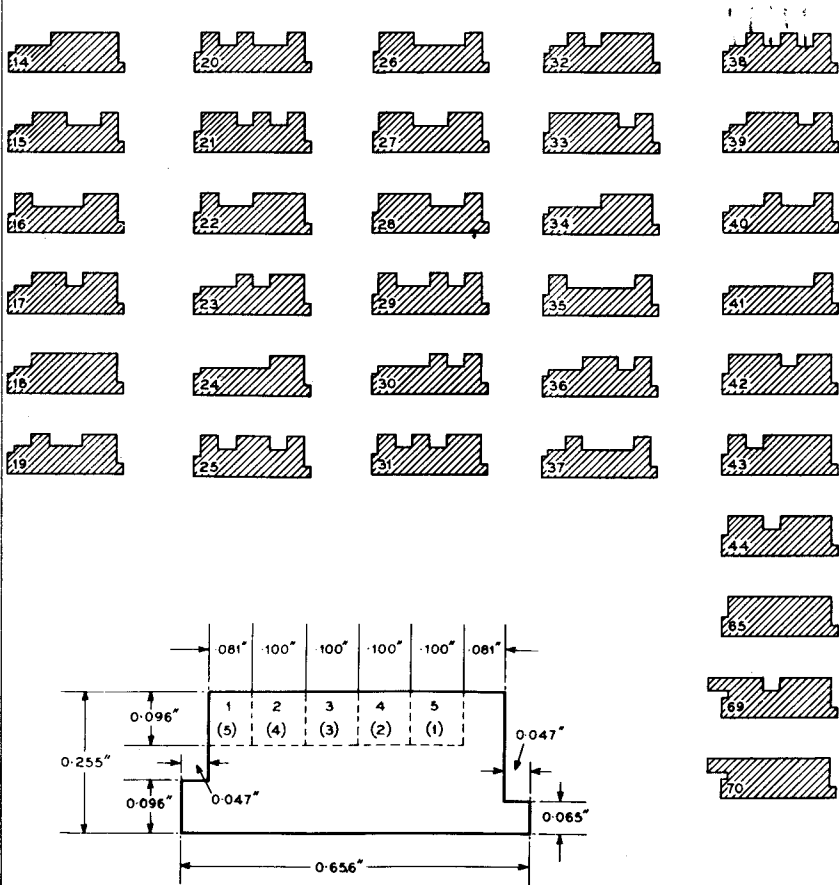
- NOTES.
1. THE NUMBERS STAMPED ON WARDS ARE THE MANUFACTURER'S CODE NUMBER.
 2. SIGNAL ELEMENTS ARE NUMBERED FROM LEFT TO RIGHT ON TELEPRINTER N°11 WARDS, I.E. 1, 2, 3, 4, 5 AND FROM RIGHT TO LEFT ON TELEPRINTER N°7 WARDS I.E. (5), (4), (3), (2), (1), AS IN ABOVE FIGURE.
A CUT-AWAY ELEMENT IN WARD CORRESPONDS TO A MARKING SIGNAL ON TELEPRINTERS N°7 AND TO A SPACING SIGNAL ON TELEPRINTERS N°11.
 3. EXTENDED WARD IS REQUIRED ON TELEPRINTER N°11 TO OPERATE THE SINGLE-REVOLUTION LATCH ON ANSWER-BACK UNIT.
 4. UNHARDENED BLANK WARD (N°68), FOR EMERGENCY USE, REQUIRES CUTTING AND HARDENING LOCALLY.

TELEPRINTERS No. 7 & 11.....
 ANSWER-BACK WARD CHART
 FOR 20 CHARACTER ANSWER BACK UNITS

TG(L) 1777
 PAGE 1-2
 ISSUE B

NOTES -

- 1 THE NUMBERS STAMPED ON WARDS ARE THE MANUFACTURER'S CODE NUMBERS.
- 2 SIGNAL ELEMENTS ARE NUMBERED FROM LEFT TO RIGHT ON TELEPRINTERS No. 11 AND 7B/PKN3 WARDS i.e. 1,2,3,4,5 AND FROM RIGHT TO LEFT ON TELEPRINTER No. 7B WARDS i.e. (5),(4),(3),(2),(1), AS IN ABOVE FIGURE.
- 3 A CUT-AWAY ELEMENT IN WARD CORRESPONDS TO A MARKING SIGNAL ON TELEPRINTERS No. 7B, 7B/PKN3, 11D & 11E AND TO A SPACING SIGNAL ON TELEPRINTERS No. 11B & 11C.
- 3 WARDS No. 69 & 70 ARE REQUIRED ON TELEPRINTERS No. 11 TO OPERATE THE SINGLE-REVOLUTION LATCH ON ANSWER-BACK UNIT. WARD No. 69 IS NOT REQUIRED ON THE TELEPRINTER No. 7B/PKN3.
- 4 UNHARDENED BLANK WARD (No. 66), FOR EMERGENCY USE, REQUIRES CUTTING AND HARDENING LOCALLY.



DIMENSIONS OF WARD AND NUMBERING OF SIGNAL ELEMENTS. (NOTE 2)

P.O.E.D.
 S. BCH.

PAPER - W
 CIRCULATION -
 GENERAL

ISSUES			
B	NEW FORMAT		31.1.67
A	REDRAWN, PARTICULARS OF TELEPRINTERS No. 11D, 11E AND 7B/PKN3 ADDED G.H.W.		22.5.53
✓	E.B. H.W.S. R.N.R. T.G.1/7		3-249

CHAR- ACTER	WARD No.			CHAR- ACTER	WARD No.		
	TELE- PRINTER No 7B	TELE- PRINTERS No 11A,11B AND 11C	TELE- PRINTERS No.11D,11E AND 7B/PKN3		TELE- PRINTER No 7B	TELE- PRINTERS No.11A,11B AND 11C	TELE- PRINTERS No.11D,11E AND 7B/PKN3
A -	28	26	14	R 4	31	38	31
B ?	36	22	15	S †	21	20	32
C :	16	39	16	T 5	18	24	33
D WRU	25	29	17	U 7	26	28	34
E 3	33	35	18	V =	24	18	35
F %	29	25	19	W 2	15	27	36
G @	23	32	20	X /	30	43	37
H £	32	23	21	Y 6	38	31	38
I 8	27	15	22	Z +	39	16	39
J BELL	20	21	23	FIGURE SHIFT	40	44	40
K (35	33	24	LETTER SHIFT	41	65	41
L)	17	19	25	CARR. RETURN	43	30	42
M .	34	14	26	LINE FEED	42	37	43
N ,	22	36	27	SPACE	44	40	44
O 9	14	34	28	LETTER SHIFT WITH EXTN.	-	70 (NOTE 3)	-
P 0	19	17	29	SPACE WITH EXTN.	-	-	69 (NOTE 3)
Q 1	37	42	30				