

TRANSMITTER AUTOMATIC No.2E

TG(L)1252

2 PANELS-1

DISCUSSION
 GENERAL
 111111
 TG(L)1252A
 NOTES 4 AND 5 ADDED TO PANEL 2. STRAPS A2-A12 AND A8-A9 ADDED AND STRAP A5-A10 DELETED ON PANEL 1.
 pendt
 W

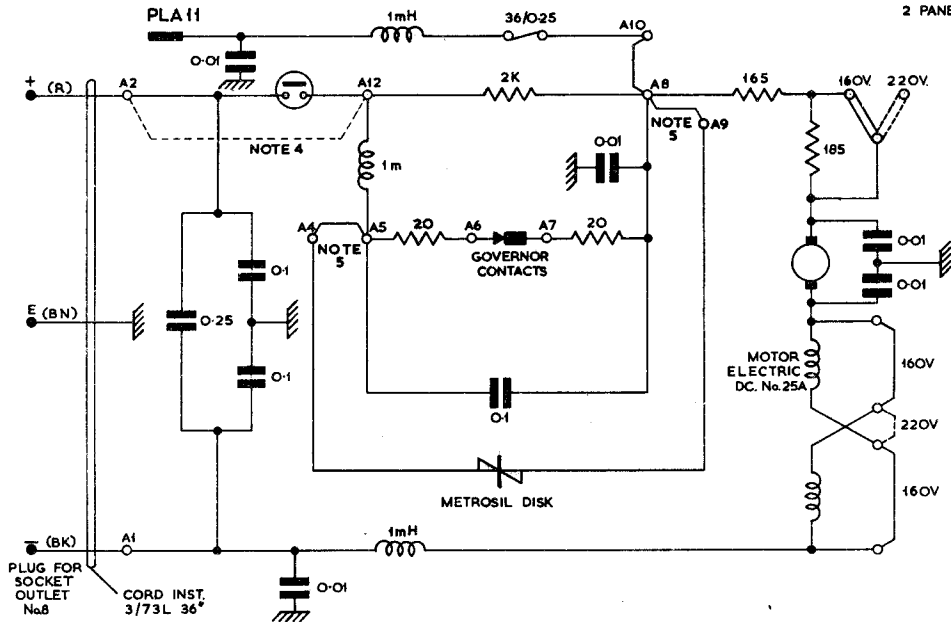
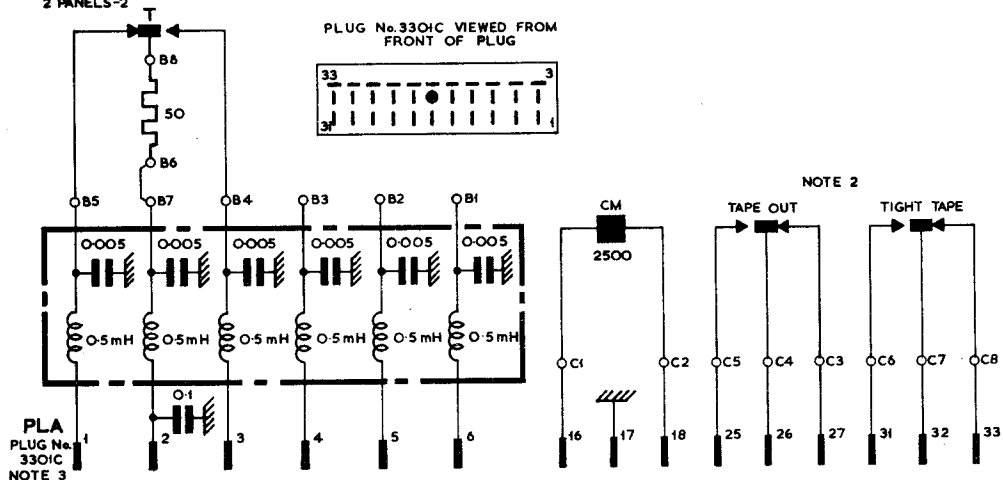


FIG.1. WIRING OF MOTOR CIRCUIT

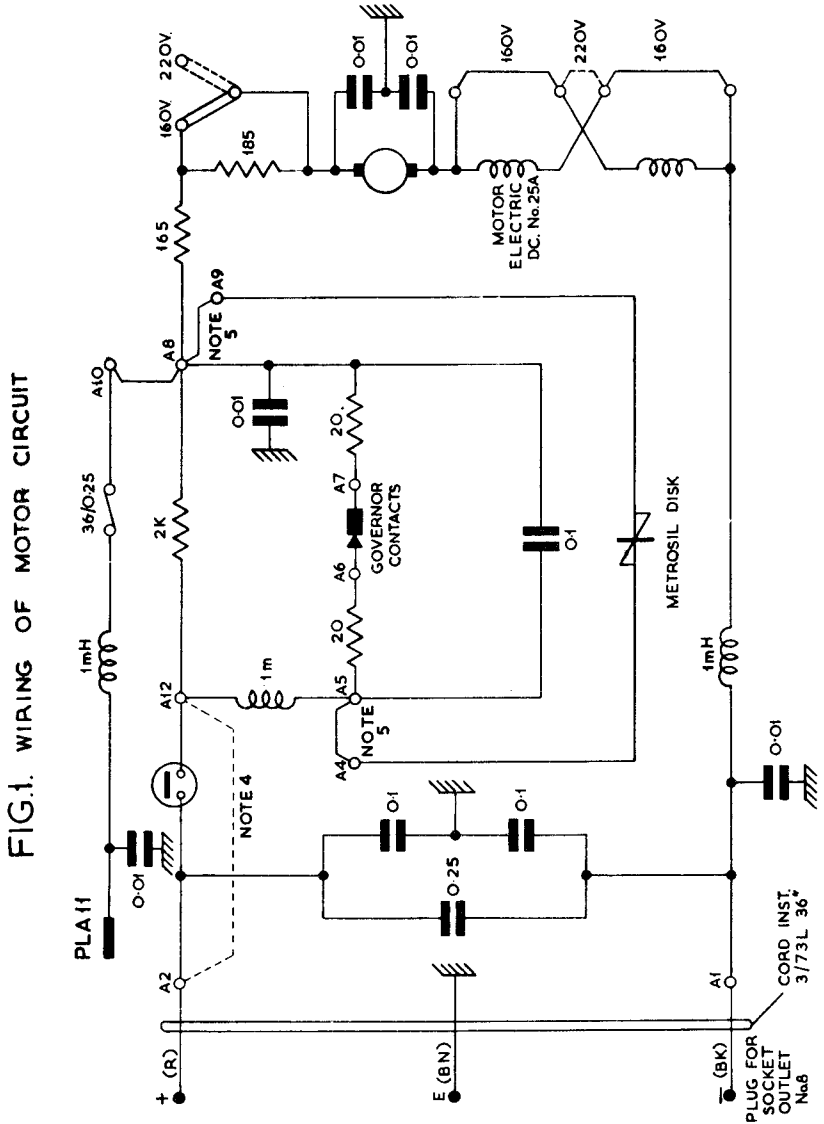
TG(L) 1252

2 PANELS-2



NOTES:-

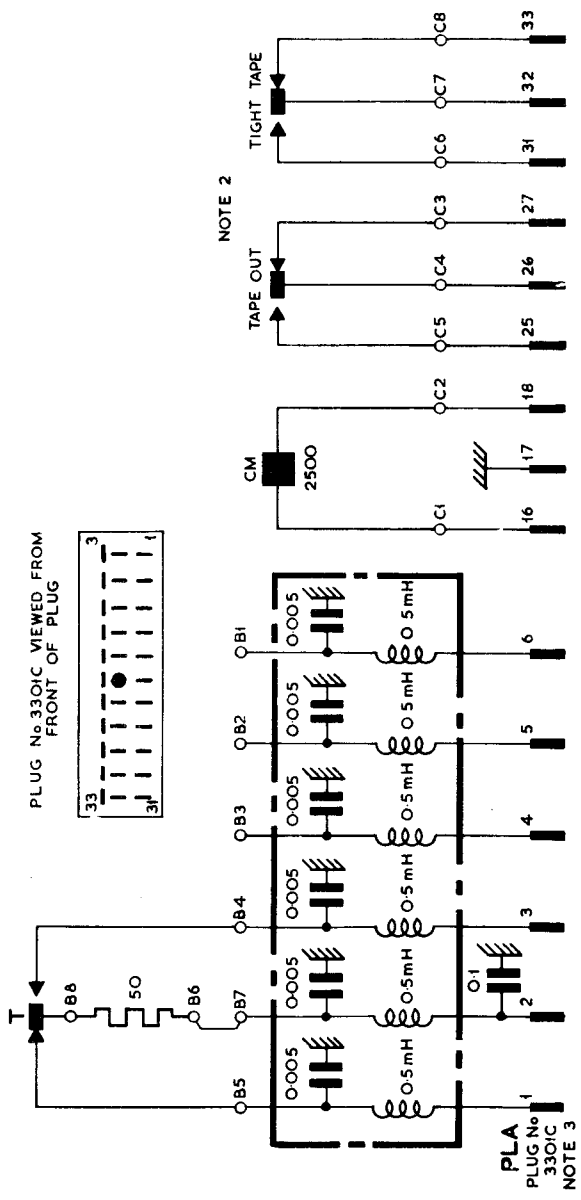
1. BLOCKS TERMINAL A, B & C ARE SITUATED IN THE MAIN BASE. 'A' IS THE 12-WAY BLOCK & 'C' IS THE 8-WAY BLOCK NEAREST TO THE FRONT OF THE MACHINE.
2. THE TAPE OUT CONTACTS ARE SHOWN IN THE TAPE OUT CONDITION. THE TIGHT TAPE CONTACTS ARE SHOWN IN THE SEND CONDITION.
3. EXTERNAL CONNEXIONS ARE MADE BY A CORD TEST No. 33/30A OR EQUIVALENT.
4. WHEN THE MACHINE IS TO BE USED ON AUTOMATIC SWITCHED CIRCUITS, A STRAP MUST BE INSERTED BETWEEN A2 AND A12 TO SHORT CIRCUIT THE MOTOR SWITCH.
5. WHEN THE MACHINE IS TO BE USED ON A 220V. d.c. MOTOR SUPPLY THE STRAPS BETWEEN A8 - A9, A8 - A10 AND A4 - A5 MUST BE REMOVED.



P.O.E.D.
TG.BCH.

PAPER :- W
CIRCULATION :-
GENERAL

ISSUE	DESCRIPTION	DATE
B	NEW FORMAT.	2.3.66
A	NOTES 4 & 5 ADDED AND MINOR EDITORIAL CHANGES MADE TO PANEL 2 STRAPS A2-A12 & B8- B9 ADDED, STRAP A9-A10 DELETED ON PANEL 1 K.H. R.C.B	4.12.56
	R.W.W. L.R. K.A.H. TG3/9	3-11-55



NOTES:-

1. BLOCKS TERMINAL A, B & C ARE SITUATED IN THE MAIN BASE. 'A' IS THE 12-WAY BLOCK & 'C' IS THE 8-WAY BLOCK NEAREST TO THE FRONT OF THE MACHINE.
2. THE TAPE OUT CONTACTS ARE SHOWN IN THE TAPE OUT CONDITION. THE TIGHT TAPE CONTACTS ARE SHOWN IN THE SEND CONDITION.
3. EXTERNAL CONNEXIONS ARE MADE BY A CORD TEST No.33/30A OR EQUIVALENT.
4. WHEN THE MACHINE IS TO BE USED ON AUTOMATIC SWITCHED CIRCUITS, A STRAP MUST BE INSERTED BETWEEN A2 AND A12 TO SHORT CIRCUIT THE MOTOR SWITCH.
5. WHEN THE MACHINE IS TO BE USED ON A 220V. d.c. MOTOR SUPPLY THE STRAPS BETWEEN A8 - A9, A8 - A10 AND A4 - A5 MUST BE REMOVED.