

TRANSMITTERS AUTOMATIC No.3...,4...,& 5...

TG(L)1197

9 PANELS-1

TRANSMITTERS AUTOMATIC No.3B, 4B, 6, 8B ADDED.
PANELS 3 TO 7 WERE PANELS 2 TO 6 PANEL 9 WAS
PANEL 7.

PANELS 2 & 3 .PLUG No.2405A CONNECTIONS
AMENDED.

PANEL 2.PLUG No.2405A CONN. AMENDED

TRANSMITTER 5C & NOTE 4 ADDED PANELS 6 & 7
WERE 5 & 6. TITLE AMENDED.

GENERAL

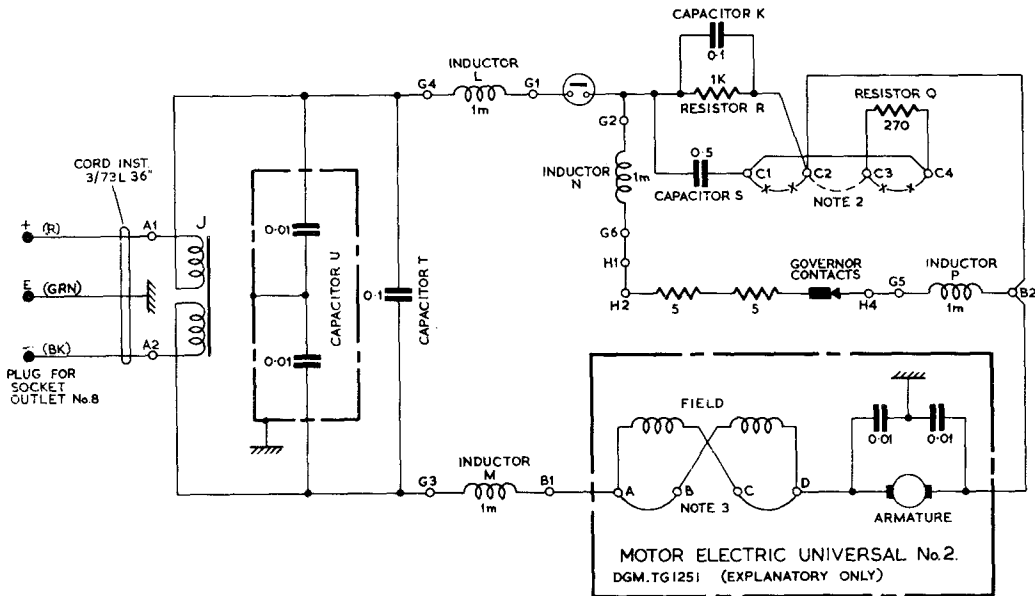


FIG. 1. TRANSMITTERS AUTOMATIC No. 3A, 3C, 4A, 4C, 5A, 5C
WIRING OF MOTOR CIRCUIT

TG (L) 1197

9 PANELS - 2

TRANSMITTERS AUTOMATIC No. 3..., 4..., & 5...

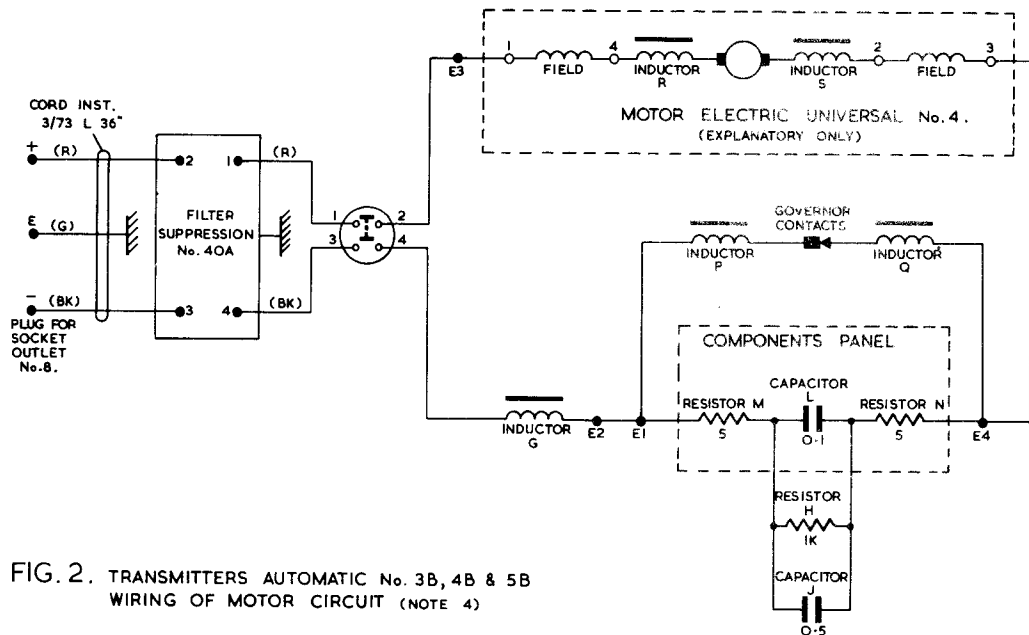


FIG. 2. TRANSMITTERS AUTOMATIC No. 3B, 4B & 5B
WIRING OF MOTOR CIRCUIT (NOTE 4)

TRANSMITTERS AUTOMATIC No.3..., 4..., & 5...

TG(L)1197

9 PANELS-3

GENERAL

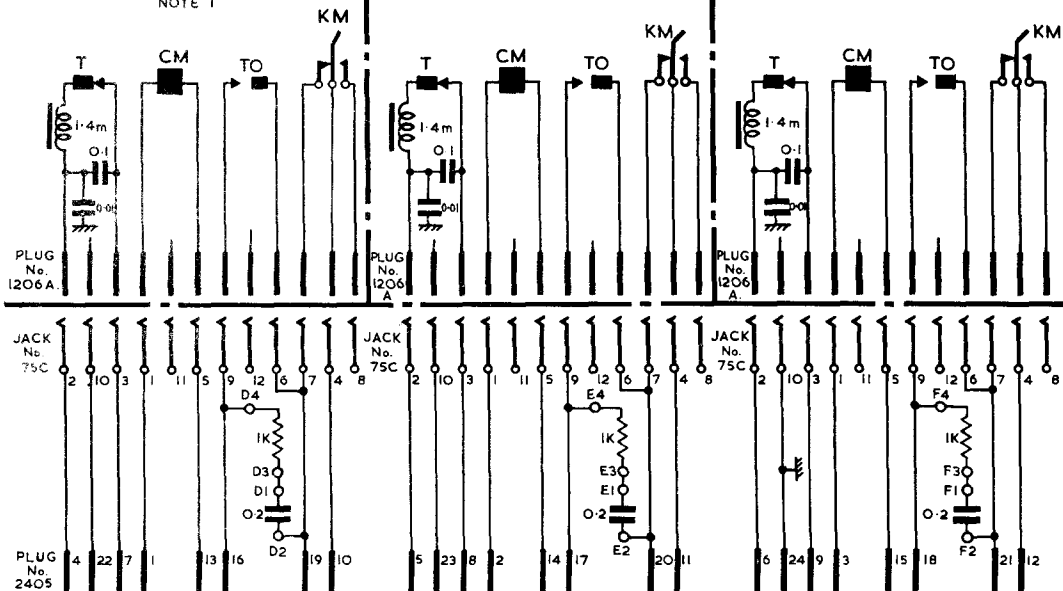
29.4.55 A
27.1.56 B
3.9.59 C
22.8.61 D

TRANSMITTER No.1.

NOTE 1

TRANSMITTER No.2.

TRANSMITTER No.3.



SEE PANEL 1
" " " " " " " "

W

FIG.3. TRANSMITTER AUTOMATIC No.3A, 3B & 3C. WIRING OF SIGNALLING CIRCUIT.

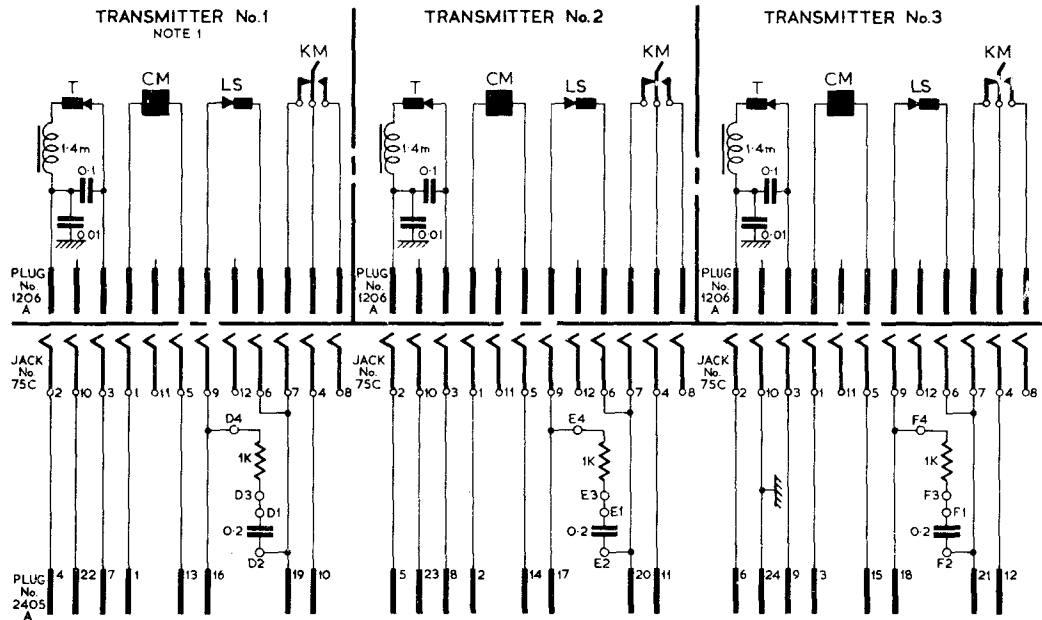


FIG. 4. TRANSMITTER AUTOMATIC No.4A,4B & 4C. WIRING OF SIGNALLING CIRCUIT.

TRANSMITTERS AUTOMATIC No.3....,4....&5.... TG(L)1197
9 PANELS - 5

GENERAL

121.8-G-10

SEE PANEL

W

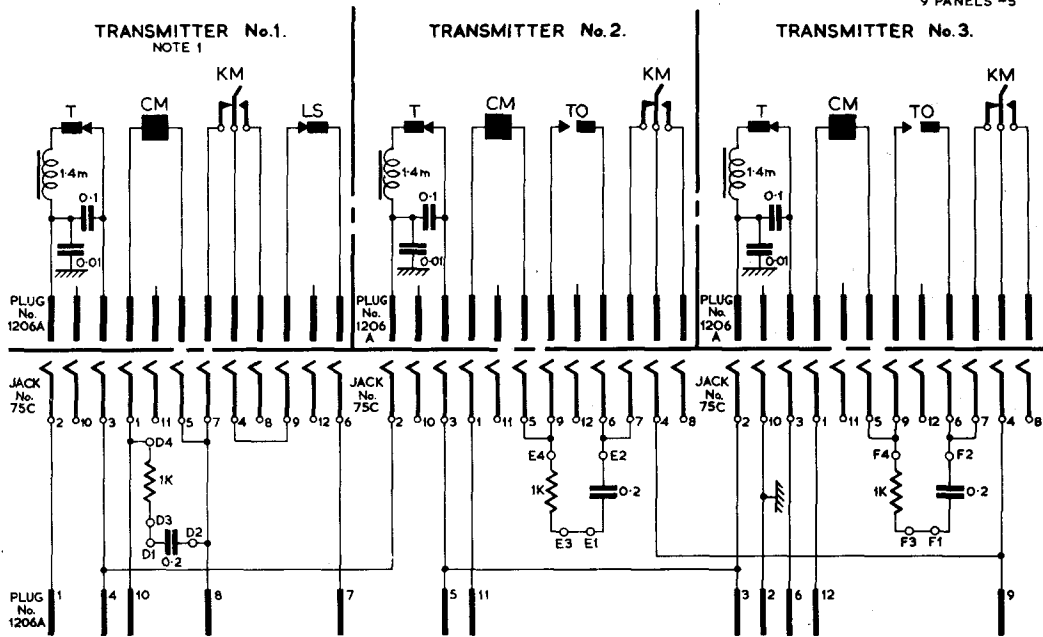


FIG.5. TRANSMITTER AUTOMATIC No.5A AND 5B ONLY. WIRING OF SIGNALLING CIRCUIT.

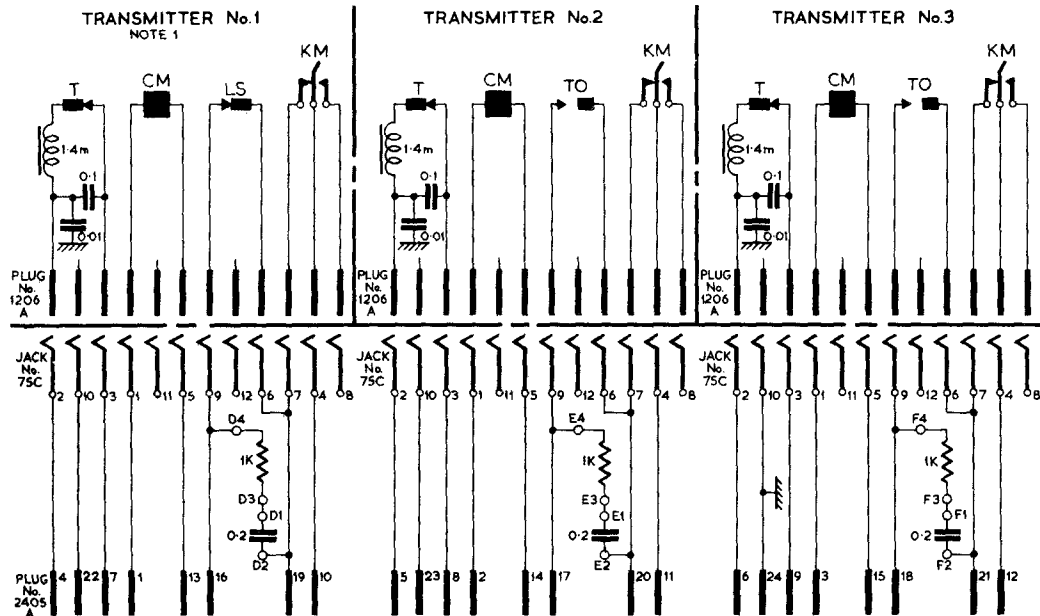


FIG. 6. TRANSMITTER AUTOMATIC No. 5C ONLY. WIRING OF SIGNALLING CIRCUIT.

TRANSMITTERS AUTOMATIC No. 3...., 4...., & 5....

TG(L)1197

9 PANELS-7

SEE PANEL 1.

24/1/55 A
21/1/56 B
23/5/53 C
22.8.61 D
GENERAL

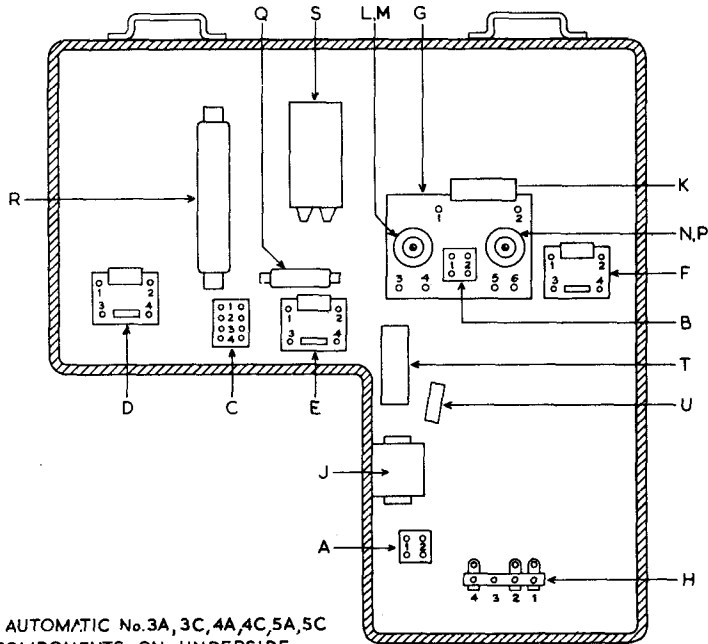


FIG. 7.
TRANSMITTER AUTOMATIC No. 3A, 3C, 4A, 4C, 5A, 5C
LAYOUT OF COMPONENTS ON UNDERSIDE
OF MAIN BASE. AS VIEWED FROM BENEATH MAIN BASE

TG (L) 1197
9 PANELS - 8

TRANSMITTERS AUTOMATIC No. 3..., 4..., & 5...

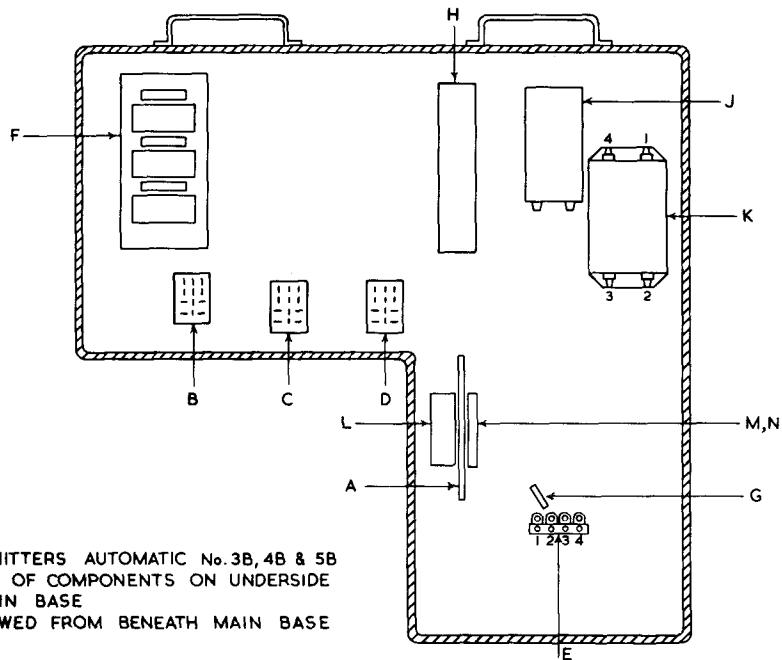


FIG. 8. TRANSMITTERS AUTOMATIC No. 3B, 4B & 5B
LAYOUT OF COMPONENTS ON UNDERSIDE
OF MAIN BASE
AS VIEWED FROM BENEATH MAIN BASE

TRANSMITTERS AUTOMATIC No. 3..., 4..., & 5...

TG(L)1197

9 PANELS - 9

22-3-61 D. IN PLANT GENERAL
 SEE PANEL I
 Amend
 W

KEY TO FIG. 7.

A,B,C	TERMINAL BLOCKS	N,P	MOTOR R.I.S. INDUCTORS (P NEAREST TO BASE)
D,E,F,G	COMPONENT CONNEXION PANELS	Q	GOVERNOR SPARK QUENCH
H	GOVERNOR CONNEXION BLOCK	R	GOVERNOR RESISTOR
J	FILTER SUPPRESSION No. 31A	S	GOVERNOR SPARK QUENCH CAPACITOR
K	GOVERNOR R.I.S. CAPACITOR	T,U	MOTOR R.I.S. CAPACITORS
L,M	MOTOR R.I.S. INDUCTORS (M NEAREST TO BASE)		

KEY TO FIG. 8

A	COMPONENTS PANEL	H	GOVERNOR RESISTOR
B,C,D	JACKS No. 75C.	J	GOVERNOR CAPACITOR
E	GOVERNOR CONNEXION BLOCK	K	FILTER SUPPRESSION No. 40A
F	COMPONENT CONNEXION PANEL	L	GOVERNOR R.I.S. CAPACITOR
G	MOTOR R.I.S. INDUCTOR (INDUCTOR RF No. 17)	M,N	MOTOR LIMITING RESISTORS

NOTES :-

- TRANSMITTER No. 1. IS THE TRANSMITTER REMOTE FROM THE MOTOR.
- FIG. 1.
FOR A.C. SUPPLY CONNECT STRAPS — X — X —
FOR D.C. SUPPLY CONNECT STRAP -----
- FIG. 1.
FOR 160V. D.C. AND 230V. A.C. STRAP AS SHOWN.
- FIG. 2.
INDUCTORS P & Q ARE INDUCTORS RF No. 17 AND ARE SITUATED INSIDE THE GOVERNOR BRUSH PANEL.
" R " S " " " 15B " " " " MOTOR CASING.
- TRANSMITTERS AUTOMATIC No. 3C, 4C, & 5C ARE 7 UNIT MACHINES.
TRANSMITTERS AUTOMATIC No. 3B, 4B & 5B ARE 7.5 UNIT MACHINES AND ARE ADJUSTABLE FOR $\frac{11}{16}$ " OR $\frac{7}{8}$ " WIDTH TAPE.
" " " 3A, 4A " 5A " 7-42 " "

TRANSMITTERS AUTOMATIC

No. 3, 4, & 5

TG(L)1197

PAGE 1-9

ISSUE E

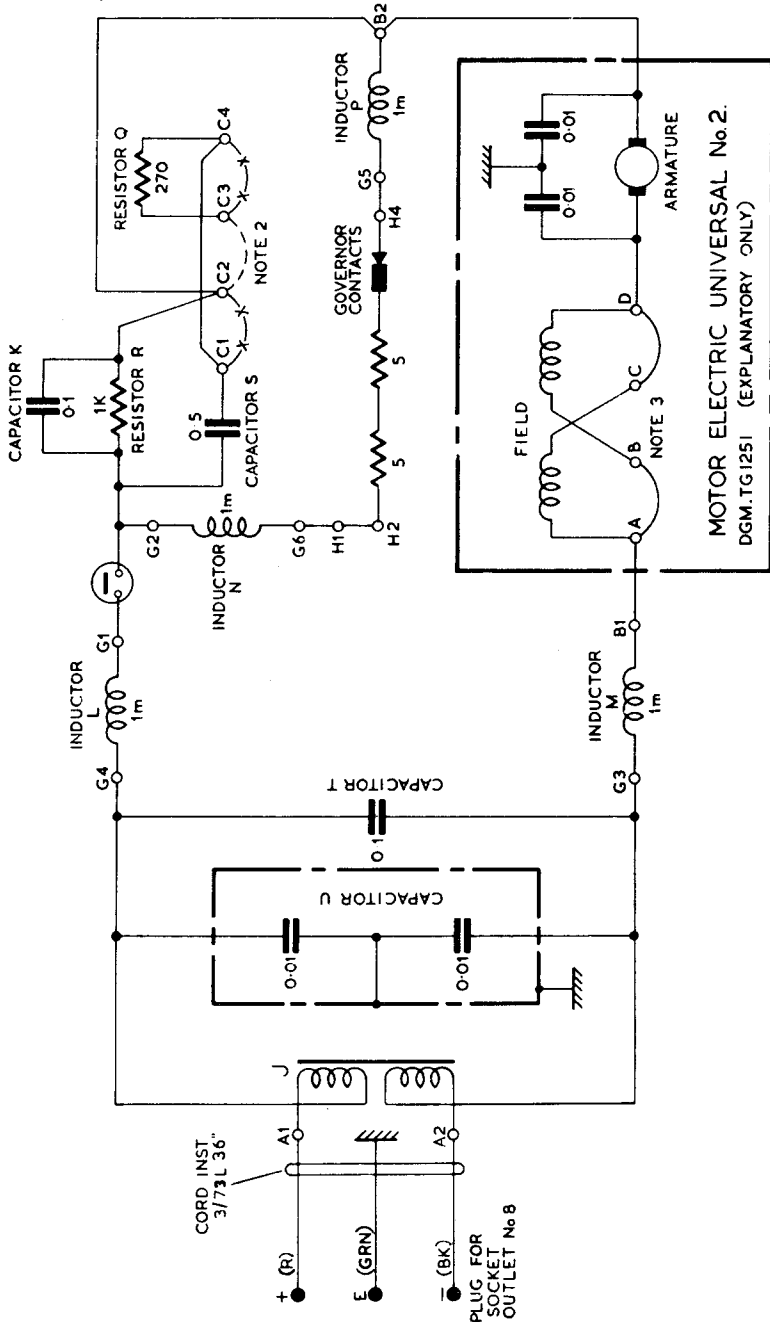


FIG. 1. TRANSMITTERS AUTOMATIC No. 3A, 3C, 4A, 4C, 5A, 5C
WIRING OF MOTOR CIRCUIT

O.E.D.
G. B.C.H.
APER W
IRCULATION
ENERAL

ISSUE	DESCRIPTION	DATE
E	NEW FORMAT	11-2-66
D	TRANSMITTERS AUTO. No. 3B, 4B AND 5B ADDED. PANELS 3 TO 7 WERE PANELS 2 TO 6. PANEL 9 WAS PANEL 7.	22-8-61
C	TRANSMITTER 5C AND NOTE 4 ADDED. PANELS 6 AND 7 WERE 5 AND 6. TITLE AMENDED.	3-9-59

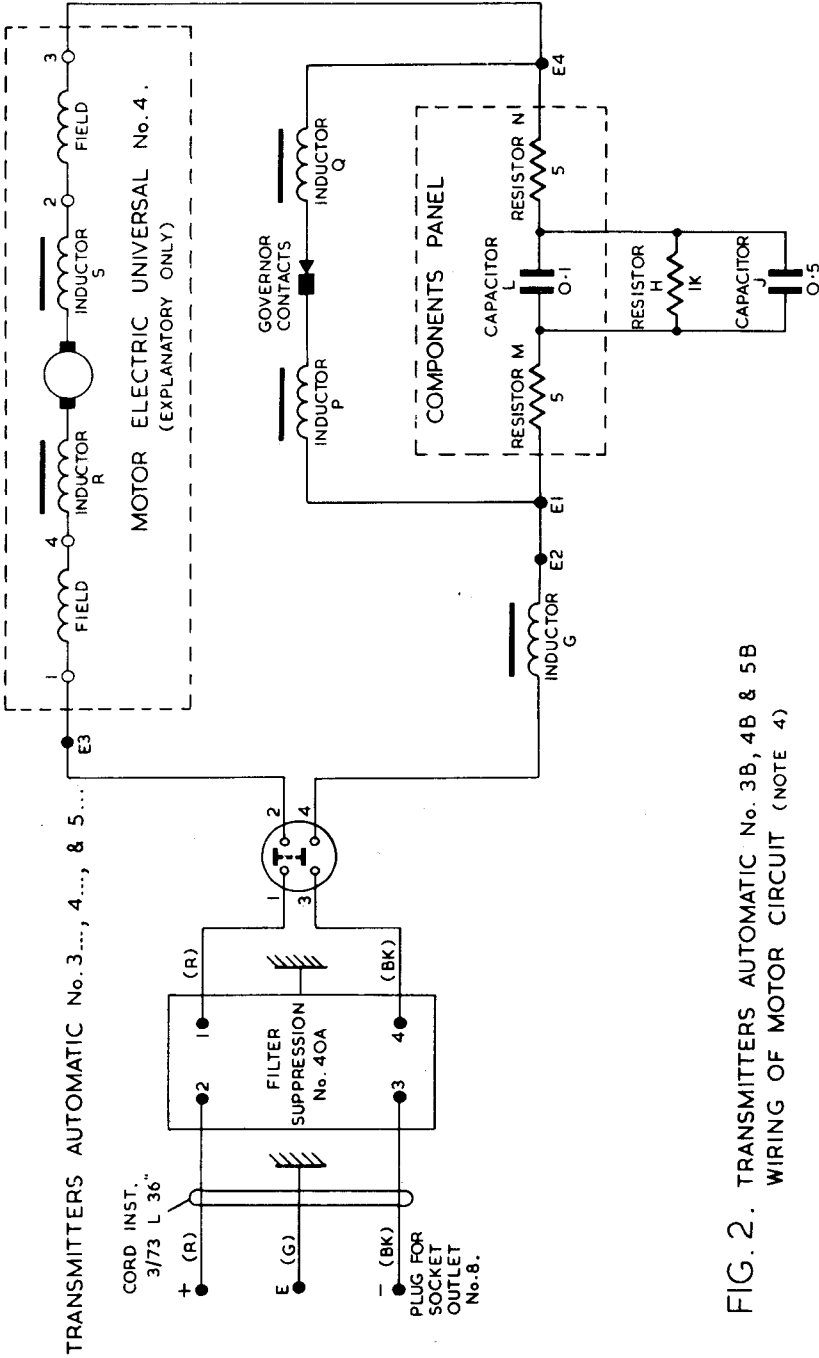


FIG. 2. TRANSMITTERS AUTOMATIC No. 3B, 4B & 5B
WIRING OF MOTOR CIRCUIT (NOTE 4)

TRANSMITTER No.3.

TRANSMITTER No.2.

TRANSMITTER No.1.

NOTE 1

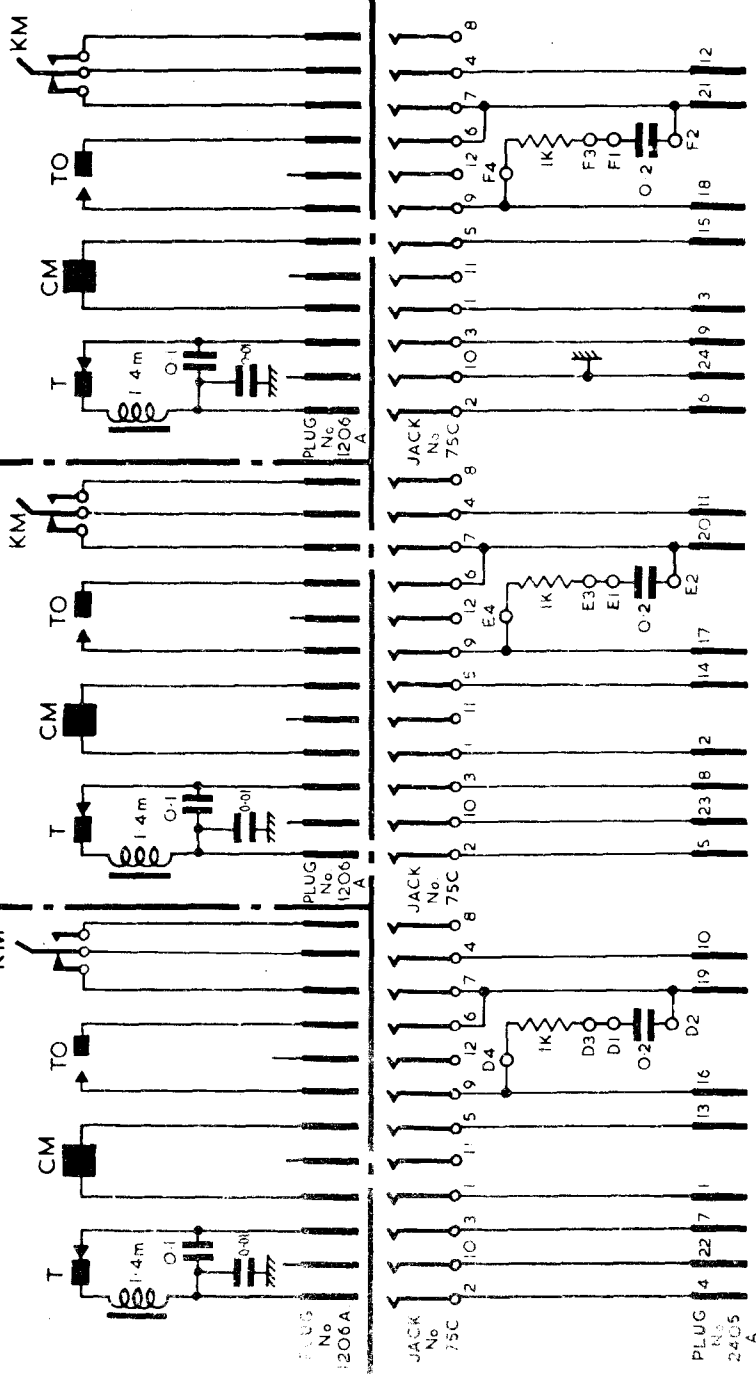


FIG. 3. TRANSMITTER AUTOMATIC No.3A,3B &3C.WIRING OF SIGNALLING CIRCUIT.

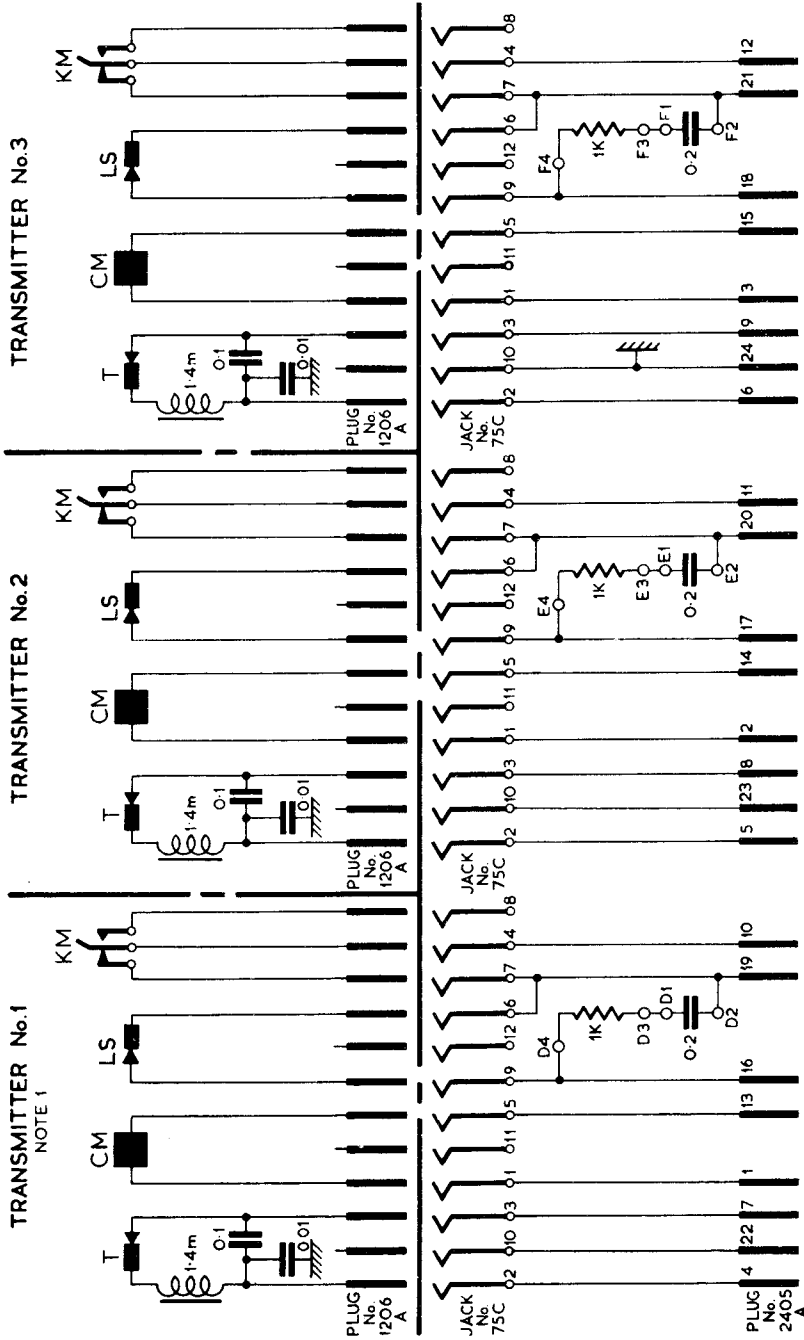


FIG. 4. TRANSMITTER AUTOMATIC No. 4A, 4B & 4C. WIRING OF SIGNALLING CIRCUIT.

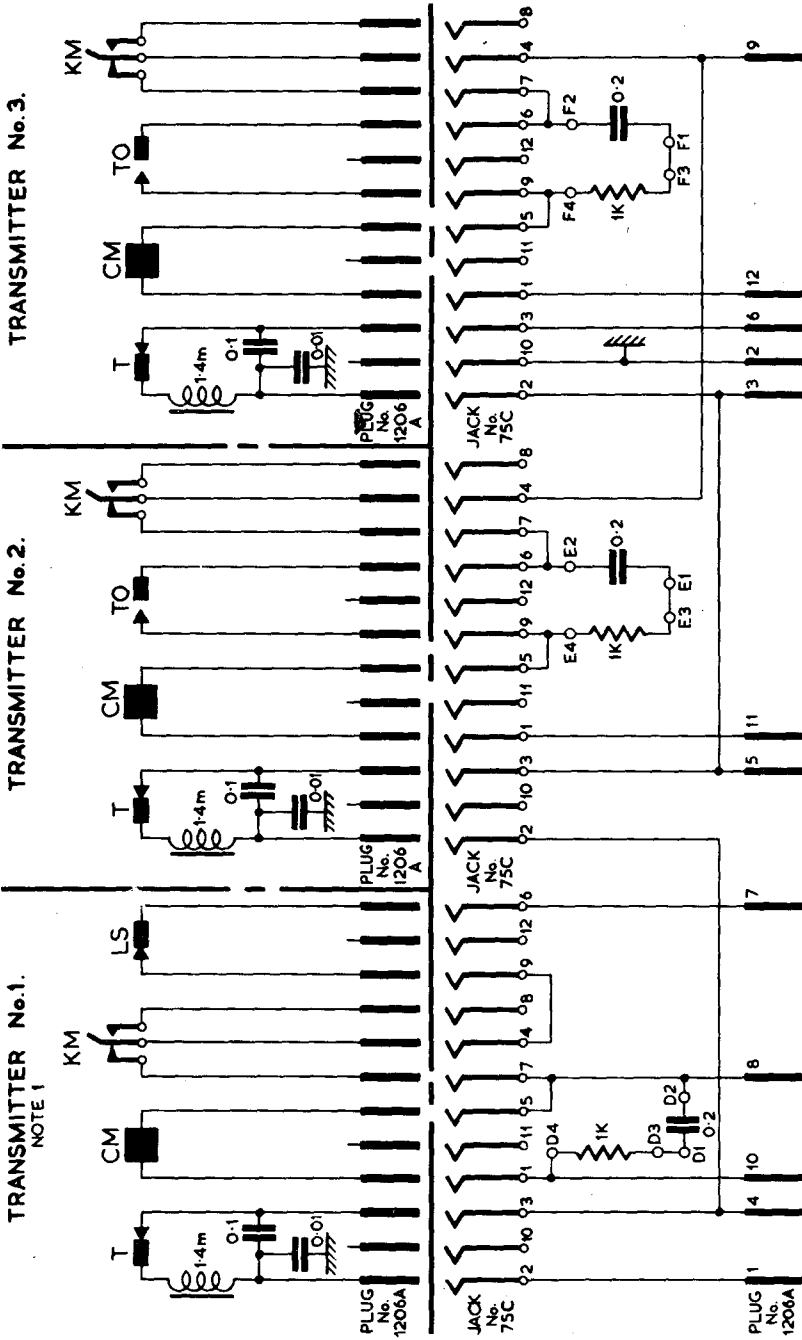


FIG. 5. TRANSMITTER AUTOMATIC No. 5A AND 5B ONLY. WIRING OF SIGNALLING CIRCUIT.

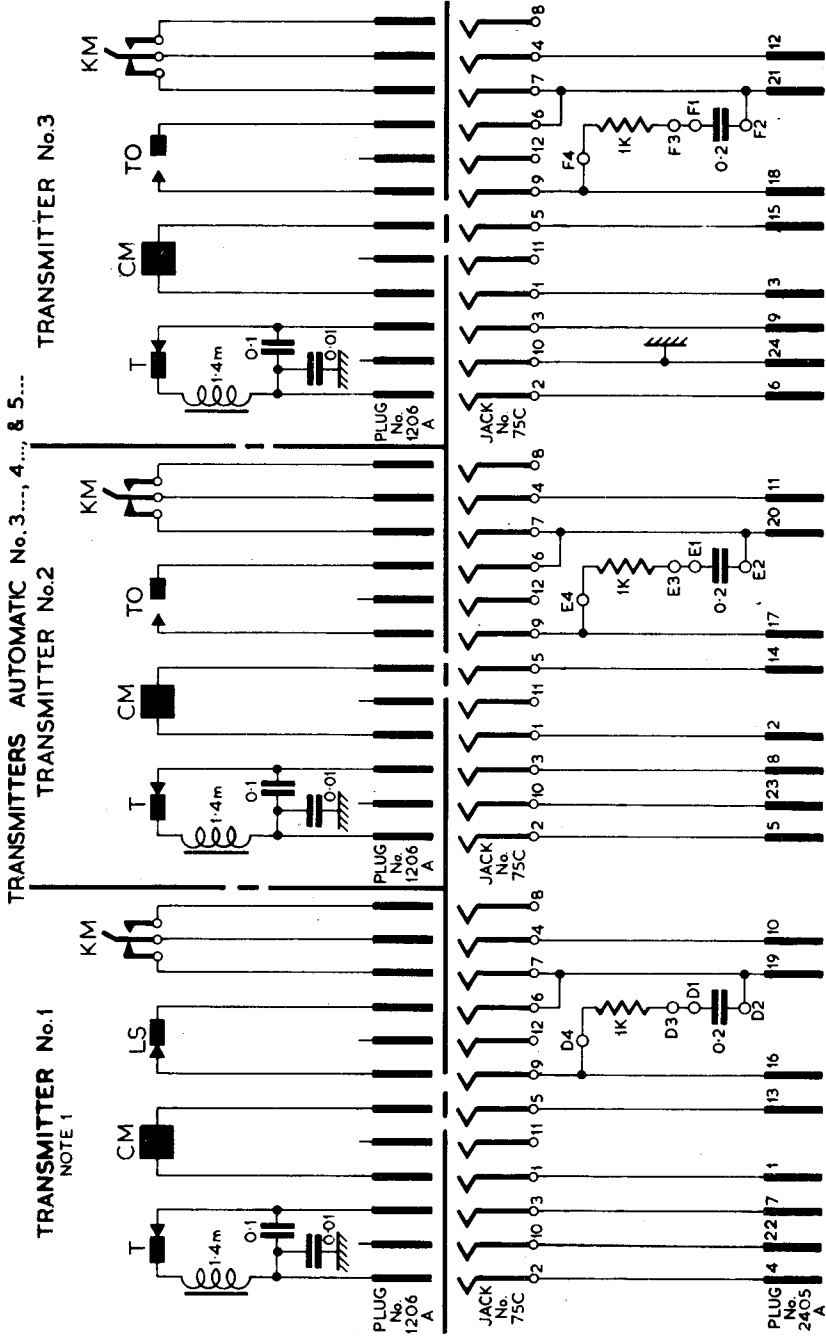


FIG. 6. TRANSMITTER AUTOMATIC No. 5C ONLY. WIRING OF SIGNALLING CIRCUIT.

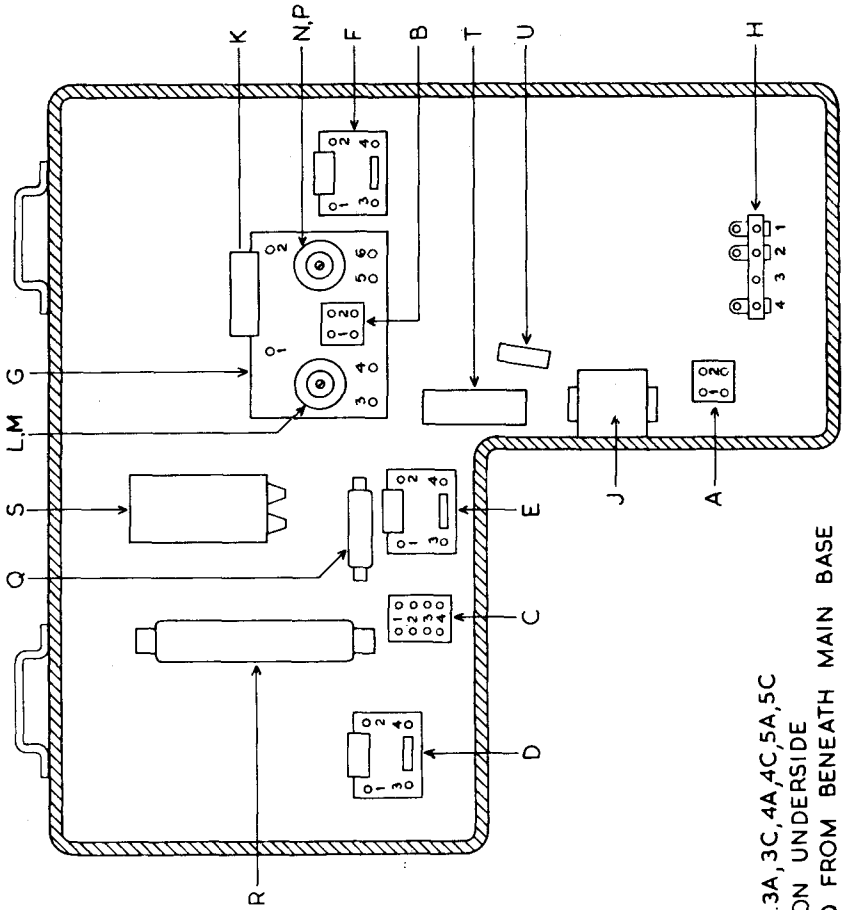


FIG. 7.
 TRANSMITTER AUTOMATIC No. 3A, 3C, 4A, 4C, 5A, 5C
 LAYOUT OF COMPONENTS ON UNDERSIDE
 OF MAIN BASE. AS VIEWED FROM BENEATH MAIN BASE

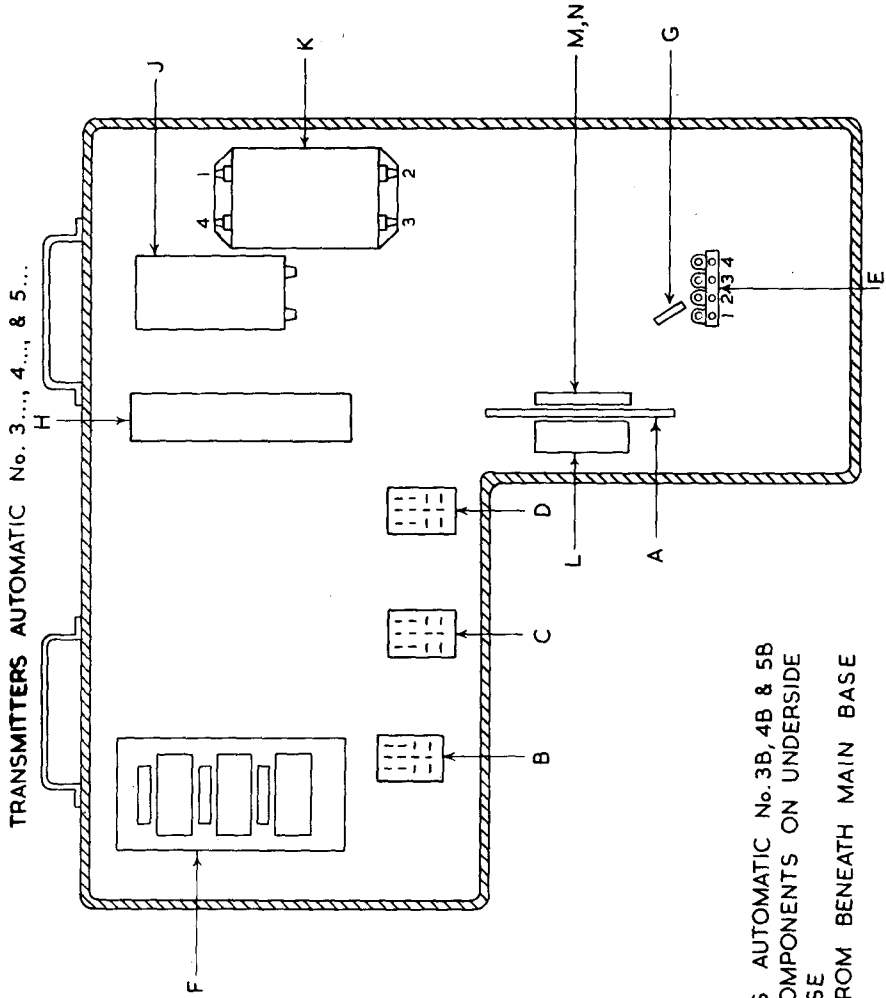


FIG. 8. TRANSMITTERS AUTOMATIC No. 3B, 4B & 5B
 LAYOUT OF COMPONENTS ON UNDERSIDE
 OF MAIN BASE
 AS VIEWED FROM BENEATH MAIN BASE

KEY TO FIG. 7.

A, B, C	TERMINAL BLOCKS	N, P	MOTOR R.I.S. INDUCTORS (P NEAREST TO BASE)
D, E, F, G	COMPONENT CONNEXION PANELS	Q	GOVERNOR SPARK QUENCH
H	GOVERNOR CONNEXION BLOCK	R	GOVERNOR RESISTOR
J	FILTER SUPPRESSION No. 31A	S	GOVERNOR SPARK QUENCH CAPACITOR
K	GOVERNOR R.I.S. CAPACITOR	T, U	MOTOR R.I.S. CAPACITORS
L, M	MOTOR R.I.S. INDUCTORS (M NEAREST TO BASE)		

KEY TO FIG. 8

A	COMPONENTS PANEL	H	GOVERNOR RESISTOR
B, C, D	JACKS No. 75C.	J	GOVERNOR CAPACITOR
E	GOVERNOR CONNEXION BLOCK	K	FILTER SUPPRESSION No. 40A
F	COMPONENT CONNEXION PANEL	L	GOVERNOR R.I.S. CAPACITOR
G	MOTOR R.I.S. INDUCTOR (INDUCTOR RF No. 17)	M, N	MOTOR LIMITING RESISTORS

NOTES :-

1. TRANSMITTER No. 1. IS THE TRANSMITTER REMOTE FROM THE MOTOR.
2. FIG. 1.
FOR A.C. SUPPLY CONNECT STRAPS ——— X ———
FOR D.C. SUPPLY CONNECT STRAP - - - - -
3. FIG. 1.
FOR 160V. D.C. AND 230V. A.C. STRAP AS SHOWN.
4. FIG. 2.
INDUCTORS P & Q ARE INDUCTORS RF No. 17 AND ARE SITUATED INSIDE THE GOVERNOR BRUSH PANEL.
" R " S " " " 15B " " " " " " MOTOR CASING. "
5. TRANSMITTERS AUTOMATIC No. 3C, 4C, & 5C ARE 7 UNIT MACHINES.
TRANSMITTERS AUTOMATIC No. 3B, 4B & 5B ARE 7.5 UNIT MACHINES AND ARE ADJUSTABLE FOR 1 1/16" OR 7/8" WIDTH TAPE.
" " " " 3A, 4A " 5A " " 7.42 "