

# UNIT TERMINATING TG1140.

## SCHEMATIC AND WIRING.

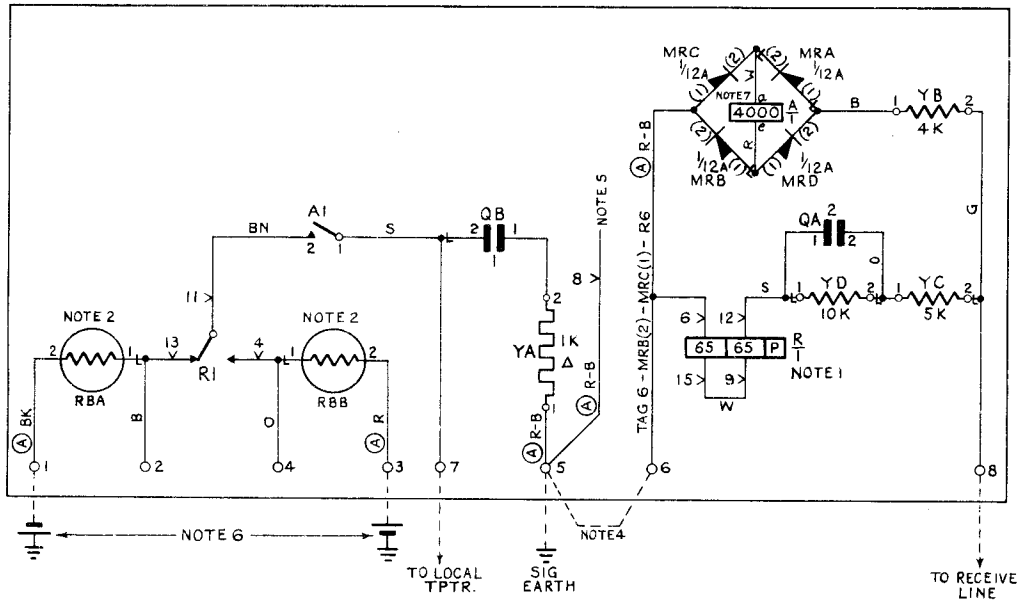
TG(L)1140  
2 PANELS-1  
16 6 49

CIRCULATION  
GENERAL

Suffix

Amendt

PAPER  
W



TG(L)1140.  
2 PANELS - 2

NOTES

1. RELAY CARPENTER TYPE 487.
2. RESISTORS, BULB N°11 - 100 $\Omega$ .
3.  $\Delta$  INDICATES RESISTOR CARBON 1W, 1000 $\Omega$  10%. ALL OTHER RESISTORS TO BE RESISTORS COIL N°12 ..... $\Omega$ .
4. THE TYPICAL EXTERNAL CONNEXIONS SHOWN ARE FOR TWO-WIRE SIMPLEX WORKING. FOR TWO-LOOP SIMPLEX WORKING THE STRAP BETWEEN TERMINALS 5 AND 6 SHOULD BE REMOVED AND TERMINALS 6 AND 8 CONNECTED TO THE RECEIVE PAIR.
5. U-POINT 8 IS CONNECTED TO THE COVER OF THE CARPENTER RELAY.
6. THE 80+80V. SUPPLY WILL BE OBTAINED EITHER FROM A RECTIFIER N°60A, OR 26B, OR FROM A BATTERY. WHERE RESISTORS BULB N°11, 100 $\Omega$  ARE INCLUDED IN THE RECTIFIER, THOSE IN THE UNIT WILL NOT BE USED AND TERMINALS 2 AND 4 SHOULD BE USED IN PLACE OF 1 AND 3.
7. RELAY N° 6223.
8. (A) INDICATES WIRE F.P. I.R.V. 1W/12 $\frac{1}{2}$   
ALL OTHER WIRING TO BE WIRE SWBD. E.T.S. AND C.C., 1W/9 $\frac{1}{4}$ .