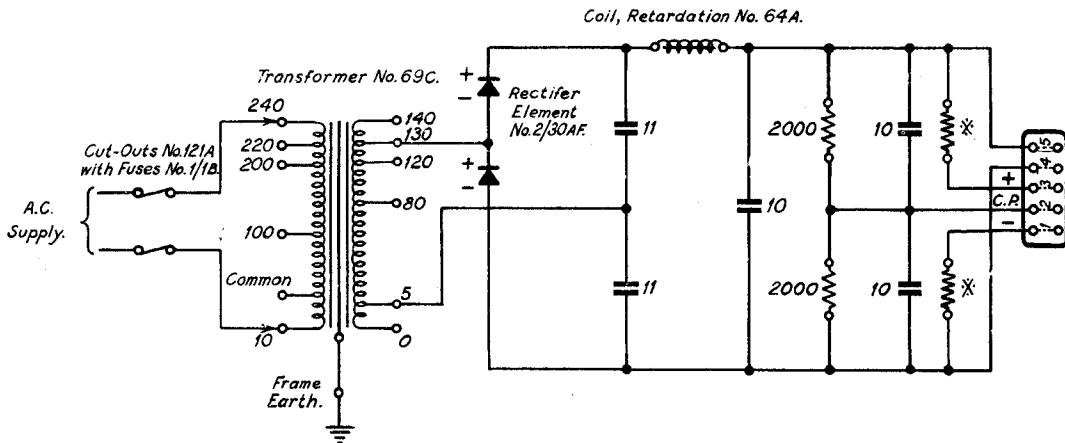


26B-37
 31-10-36



- NOTES. 1. THE 10V. PRIMARY TAPPING PROVIDES FOR INTERMEDIATE INPUT VOLTAGES OF 110, 210, 230 & 250 WHEN USED IN CONJUNCTION WITH HIGHER TAPPINGS
 2. SECONDARY TAPPING 0-80V. PROVIDES A D.C. OUTPUT FROM THE RECTIFIER OF APPROX. 50+50V. AT 20mA

THESE TAPPINGS SHOULD BE REGARDED AS NORMAL; THE ADDITIONAL TAPPINGS SERVE AS AN ADJUSTMENT TO SUIT THE VARIATIONS OF OUTPUT OF INDIVIDUAL RECTIFIERS.

3. * RESISTORS COIL No. 9. 120 Ω FOR MK. 1; JACKS, LAMP No. 12. WITH RESISTORS, BULB No. 11. 100 Ω FOR MK. 2.

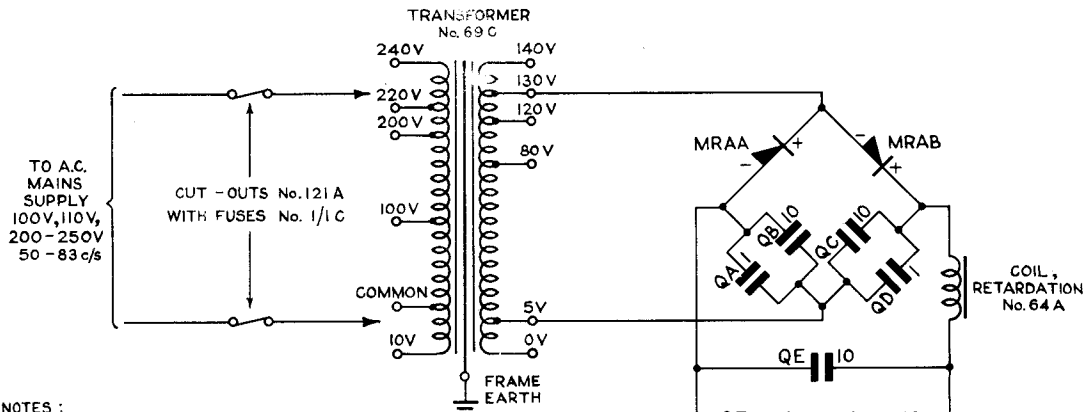
26B-37	A
31-10-36	B
L.I. No was 1010.	
Not a part.	
No. ndment	

RECTIFIER No. 26 B.

TG(L) 1058

31-10-36

CIRCULATION	GENERAL	
	Suffix	
NOTE 3 ADDED. REDRAWN, NOTES 4, 5, & 6 ADDED.	31.7.39 B	
	19.11.46 C	
Amend.		
PAPER	W	



NOTES :

1. THE 10V PRIMARY TAPPING PROVIDES FOR INTERMEDIATE INPUT VOLTAGES OF 110, 210, 230 & 250 WHEN USED IN CONJUNCTION WITH OTHER TAPPINGS.
2. SECONDARY TAPPINGS 5V & 130V PROVIDE A D.C. OUTPUT OF APPROX. $\pm 80V$ AT 20 mA. THESE TAPPINGS SHOULD BE REGARDED AS NORMAL ; THE ADDITIONAL TAPPINGS MAY BE USED IF NECESSARY TO COMPENSATE FOR VARIATIONS IN THE CHARACTERISTICS OF INDIVIDUAL RECTIFIERS.
3. YA, YB ARE "RESISTORS, COIL, No. 21, 2000 Ω , PAIR."
4. YC, YD ARE RESISTORS, COIL, No. 9, 120 Ω FOR MK.1, & RESISTORS, BULB, No. 11, 100 Ω IN JACKS, LAMP, No. 12, FOR MKS. 2 & 3.
5. QB, QC, QE, QF, QG : CONDENSERS, M.C. No. 156. QA, QD : CONDENSERS M.C. No. 151.
6. MRA : { RECTIFIER ELEMENT No. 2/30 AF. OR No. SETF 2
OR S.T. & C RECTIFIER UNIT 280/LU 832 A