

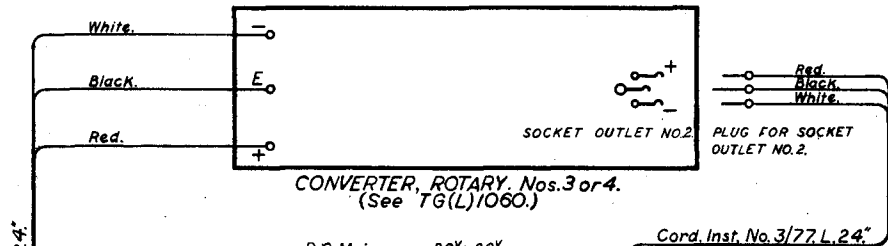
# TELEPRINTER LINE POWER ARRANGEMENT FOR D.C. MAINS. TG(L)1020

80V+80V SUPPLY DERIVED FROM CONVERTER, ROTARY No.3. or 4.

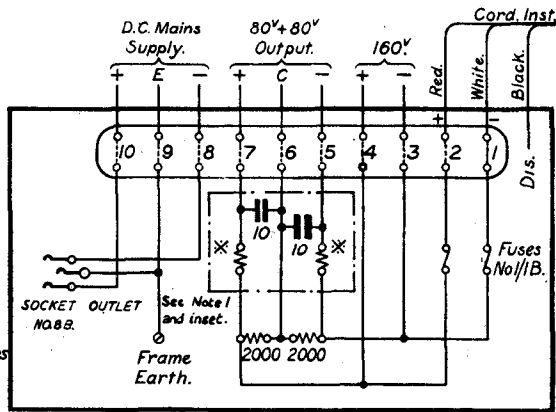
7-4-36

Amendment	NOTE 1 ADDED.	6-10-41	D
CONVERTER, ROTARY, NO. 4 ADDED.	16-4-37	A	Inset for Mark III added.
L.L. AND W.A. CHANGED	7-5-41	B	
PLUG & SOCKET NOMENCLATURE CHANGED	6-10-41	C	

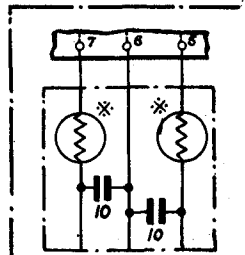
*add. est. 4-10-36. Dack.*



Cord, Inst. No. 3/77, L. 24"



UNIT AUXILIARY APPARATUS. TG.1020.



WIRING OF MARK III PATTERN.

**NOTE 1.**

\* RESISTORS COIL No. 9 120Ω FOR MK.1 JACKS, LAMP No.12 WITH RESISTORS BULB No.11 100Ω FOR MK.2. & MK.3.