

H.E.S. No.4.

CIRCUIT ELEMENTS
MULTIPLE STATIONS, INTERCOM SPEECH AND
SIGNALLING CIRCUITS.

Q(L)581

PAGE 1-6

- FIG.1:- STATION 1 CALLING STATION 2.
FIG.2:- STATION 1 AWAITING ANSWER.
FIG.3:- STATION 1 SPEAKING TO STATION 2.
FIG.4:- STATION 1 CALLING STATION 2, WHICH IS ENGAGED ON AN
EXCHANGE LINE.

NOTES:-

1. FOR FULL DETAILS OF ITEMS OF APPARATUS, CABLE CONNEXIONS, ETC., SHOWN IN THESE CIRCUIT ELEMENTS, SEE RELEVANT DIAGRAMS:-

ITEM	DGM.
MULTIPLE CABLE CONNEXIONS	Q(L) 503
BOX, CONNEXION No.6A	Q(L) 510
RELAY UNIT Q516	Q(L) 516
CONNECTOR No.1046...	} Q(L) 540
TELEPHONE INTERCOM No.4/1...	

2. TERMINALS 13-14 AND 17-18 ARE SOLDER STRAPPED ON REAR OF TERMINAL TABLET.
3. WHEN A STATION WISHES TO RECEIVE AN INTERCOM CALL SIGNAL WHILST ENGAGED ON AN EXCHANGE CALL, SHIFT STRAP BETWEEN TERMINALS T3-T4 TO T2-T3. STRAP TERMINAL T21 TO 'B' WIRE OF STATION INTERCOM PAIR I.E. AT STATION 1, STRAP TERMINALS T21-T44. (SEE DGM. Q(L)540).

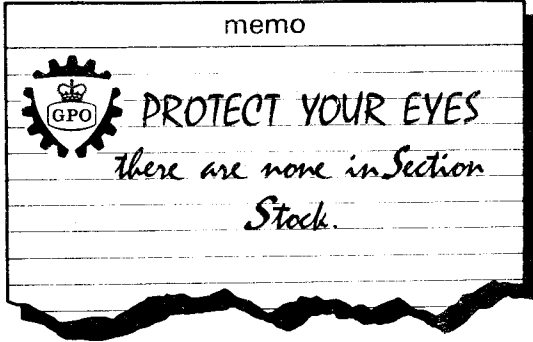
P.O.E.D.
S BRANCH

PAPER:- W
CIRCULATION:-
GENERAL

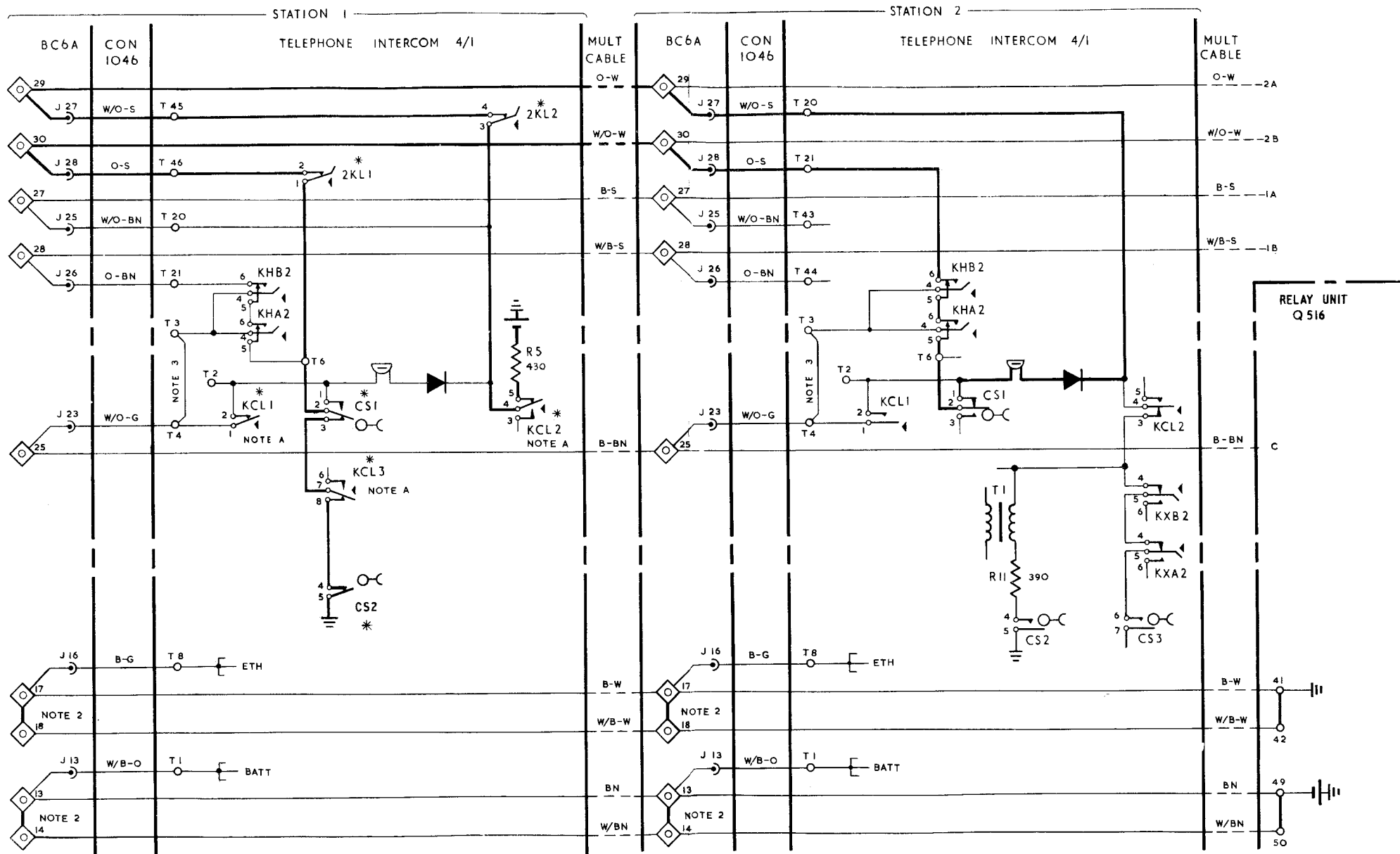
ISSUE

[Signature]

28.3.67

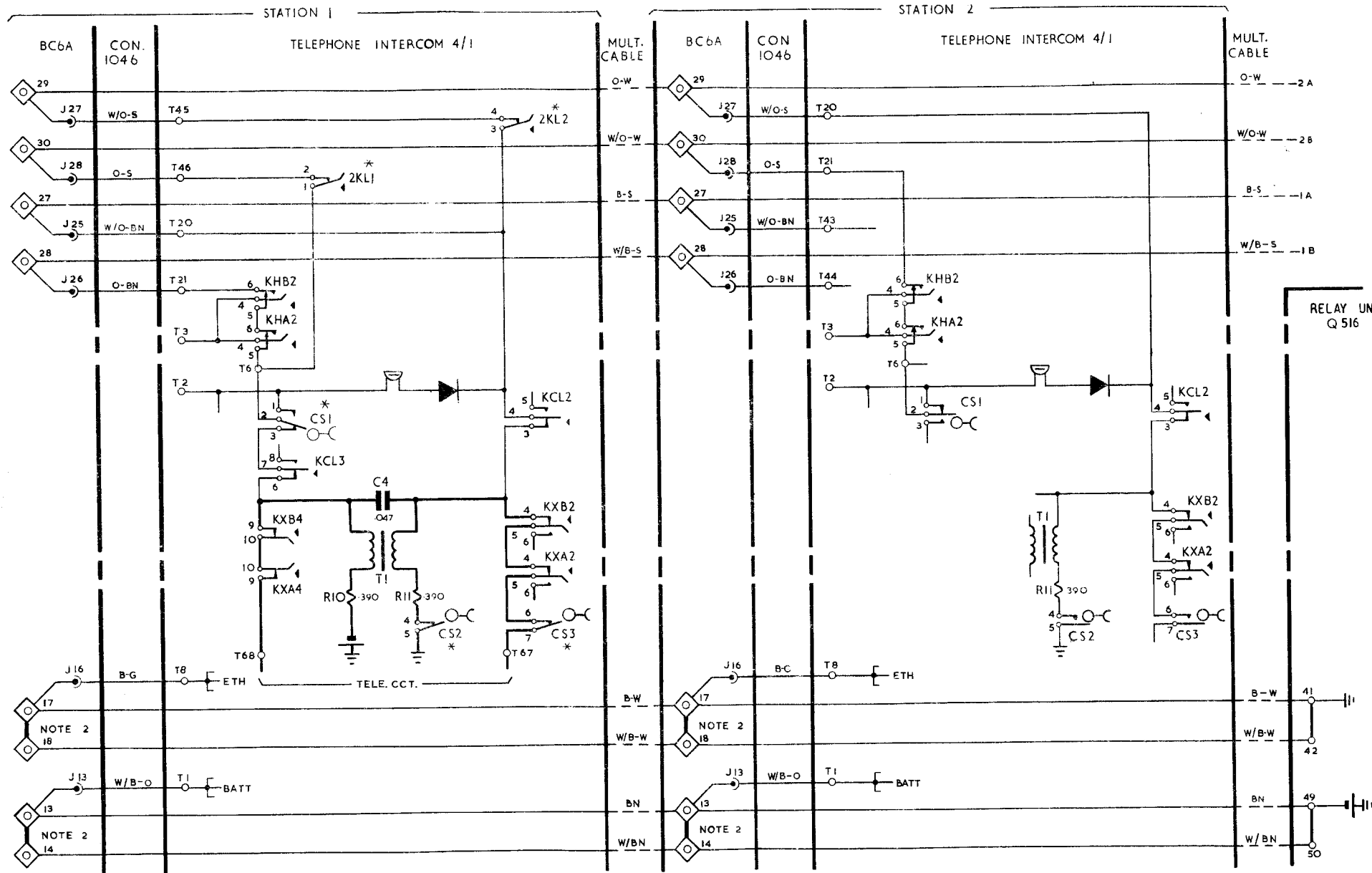


S P A R E



* CONTACTS SHOWN OPERATED
 ——— INDICATES THE PART OF CIRCUIT USED

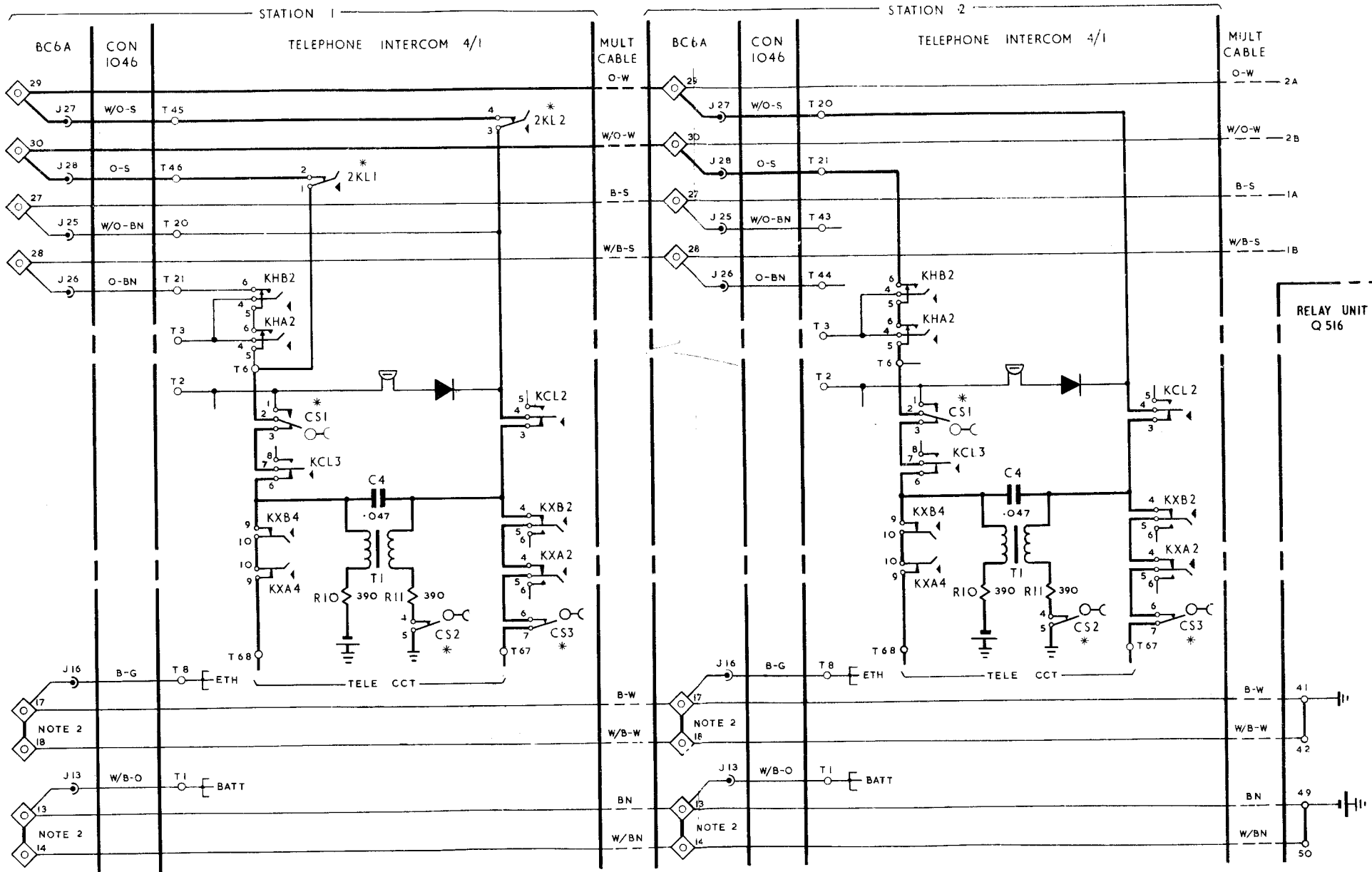
NOTE: A. KCL CONTACTS ARE ONLY OPERATED WHEN THE STATION BUTTON IS FULLY DEPRESSED.



* CONTACTS SHOWN OPERATED.

— INDICATES THE PARTS OF CIRCUIT USED

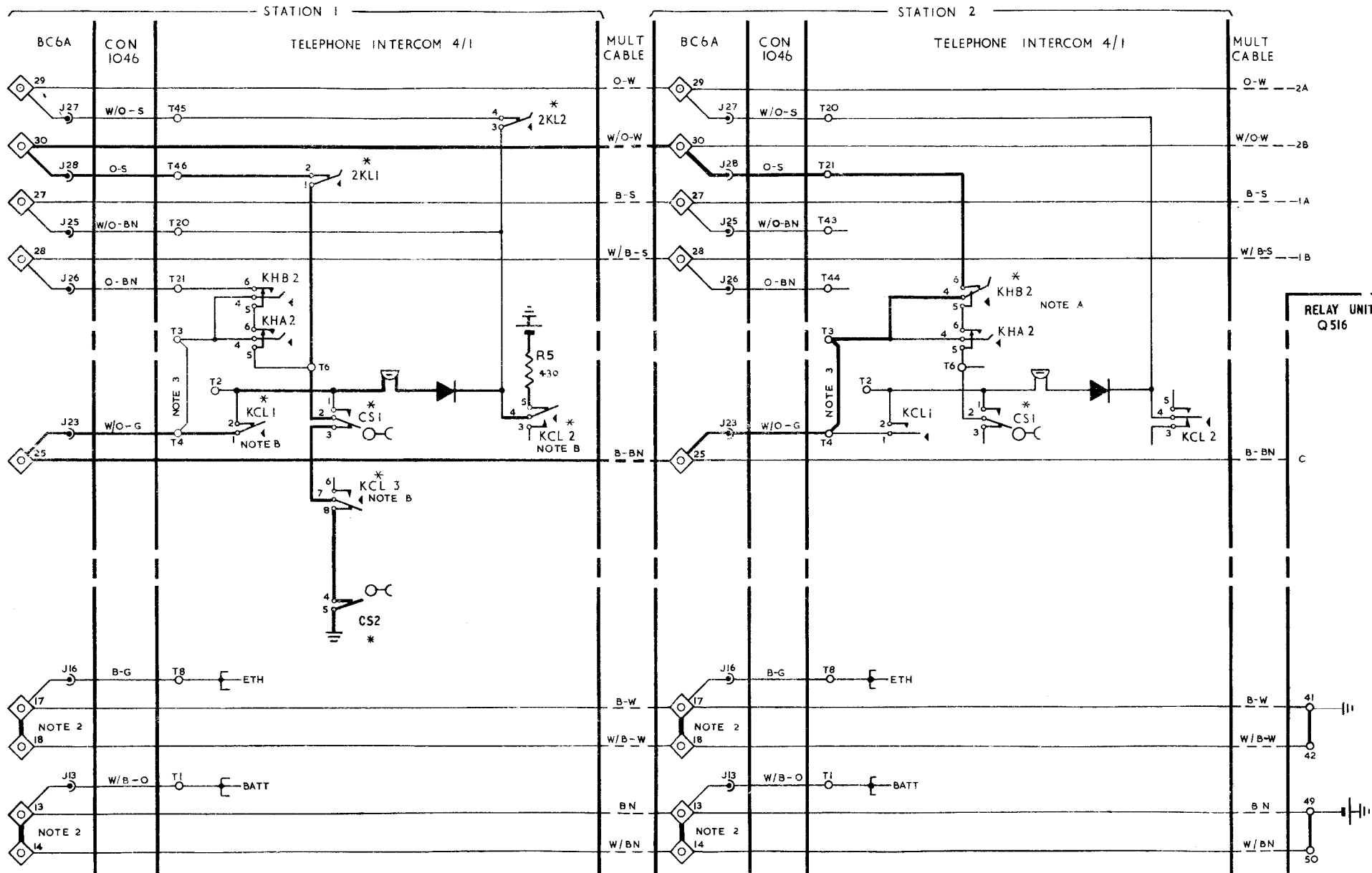
FIG. 3. STATION 1 SPEAKING TO STATION 2.



* CONTACTS SHOWN OPERATED.

— INDICATES THE PART OF CIRCUIT USED.

FIG. 4. STATION 1 CALLING STATION 2, WHICH IS ENGAGED ON AN EXCHANGE LINE



* CONTACTS SHOWN OPERATED
 ——— INDICATES THE PART OF CIRCUIT USED

NOTES. A. THIS ELEMENT SHOWS STATION 2 ENGAGING EXCHANGE LINE 2 (KHB SPRINGS OPERATED). WHEN EXCHANGE LINE 1 IS ENGAGED, KHA SPRINGS WILL OPERATE.
 B. KCL CONTACTS ARE ONLY OPERATED WHEN THE STATION BUTTON IS FULLY DEPRESSED.