

NOTES:-

1 For description of Signalling Groups and P.B.X. terminations, see E.I. TELEPHONES, P.B.X., B 3102. For signalling resistance limits, see DGM. N705.

Circuit diagrams relevant to Signalling Groups are shown in the table below.

SIGNALLING GROUP		Dgm. No.
A(i) a	A/WE Bothways	Q(L) 562
A(ii) a	G/AC In: A/WE Out	Q(L) 563
C	G/AC In: Loop Out	Q(L) 564
A(ii) b	G/AC Bothways	Q(L) 565
A(i) b	A/WE In: G/AC Out	Q(L) 566
B	Loop In: G/AC Out	Q(L) 567
H	Auto Bal Batt Bothways	Q(L) 568

2. The cable 41W from B.C. 7A should be terminated as shown on Dgm. Q(L) 503, Fig.8.


3. When it is authorized that incoming exchange calls may be transferred to extension, strap terminals as follows:-

Exch. Line 1 74-84 : Exch. Line 2 75-85.

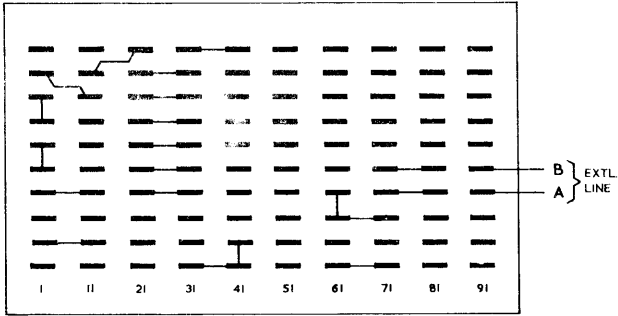
4. When incoming exchange calls are to be extended to extension, under night service, strap terminals as follows:-

Exch. Line 1 78-88, 80-90 : Exch. Line 2 79-89, 80-90.

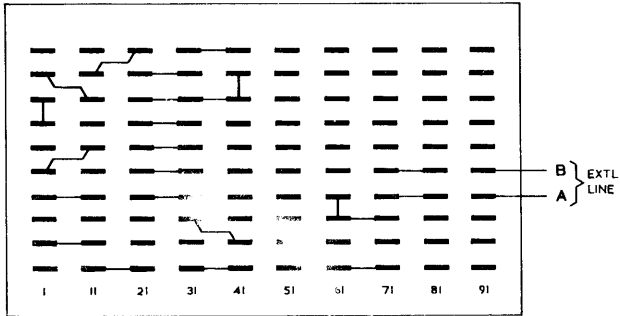
5. When "G/AC OUT" signalling is required, provide Converter, Ringing No.7, as shown on Dgm. Q(L) 503, Fig.6. See also Notes 7 and 9 of Dgm. Q(L) 503.

P.O.E.D. S BCH. PAPER:W CIRC'L TN: GENERAL	ISSUE		
			30.5.67

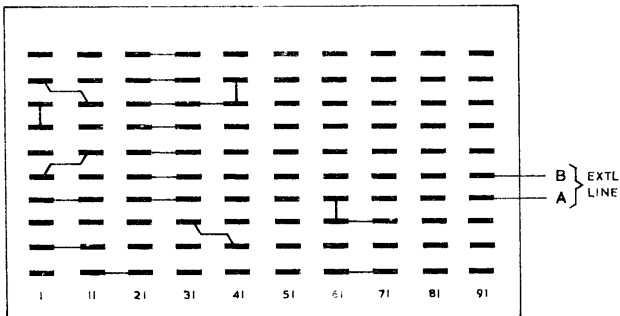
GROUP A (i) a. A/WE BOTHWAYS (NOTES 2 & 3)



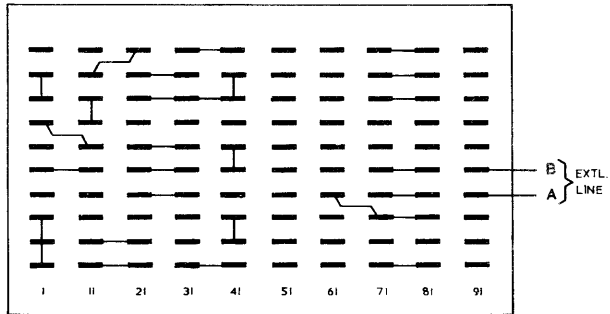
GROUP A(ii) a. G/AC IN : A/WE OUT (NOTES 2 & 3)



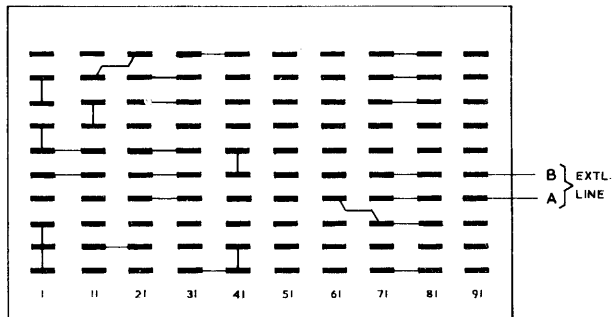
GROUP C. G/AC IN : LOOP OUT (NOTE 2)



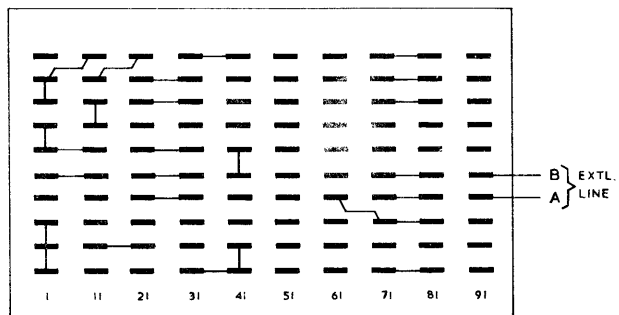
GROUP A (i) b. G/AC BOTHWAYS (NOTES 2, 3, 4 & 5)



GROUP A (i) b. A/WE IN : G/AC OUT (NOTES 2,3,4 & 5)



GROUP B. LOOP IN : G/AC OUT (NOTES 2,3,4 & 5)



GROUP H. AUTO. BAL. BATT. BOTHWAYS (NOTES 2 & 3)

