

NOTES:-

1. This arrangement is to be used where the subscriber requires more than FIVE Bells to ring (or more than ONE Bell in vibrator areas) A maximum of TWENTY may be connected. All other connexions are as shown on Diagrams Q 503, 516 and 540.
2. BELL UNDER CONTROL OF BELL ON-OFF BUTTONS, OR PERMANENTLY IN CIRCUIT

In Box Connexion No.6A:-
Disconnect 'W/B-BN' wires from Terminals 47 and 48.
Connect 'BK' wires from previous and following stations to terminal 48.
Strap Terminal 17 to 47.

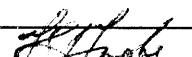
In Telephone Intercom. No.4/1:-
Remove straps between terminals T33, T34 and T35, if provided.
Shift 'G' Cord Conductor from Terminal T33 to T35.
Reverse position of BELL ON and BELL OFF Buttons in Cover.

To connect Bell so that it will always ring:-
Strap Terminal T33 to T35.
3. BELL DISCONNECTED

In Box Connexion No.6A:-
Disconnect 'W/B-BN' wires from Terminals 47 and 48.
Connect 'BK' wires from previous and following Stations to terminal 48.
4. AT MAIN STATION where the Bell must always ring directly from the Calling Exchange Line.

In Box Connexion No.6A:-
Disconnect 'W/B-BN' wire from Terminal 47.
Strap Terminal 17 to 47.

In Telephone Intercom. No.4/1:-
Remove Strap Between Terminals T34 and T35, if provided.
5. Use spare Terminal in B.T. No.36A or B.C. No.7A to connect 'BK' wire from Last Multiple Station, to 'BK' wire to Relay Unit Q 516.
6. Construct the Special Relay Set using the following items:-
Relay No.3549
Mounting No.151/2A
Bracket Mounting AZ
Relay Cover AP
Terminate Cable 6W directly onto the Relay Springs and Coil Tags, mount Special Relay Set adjacent to the Relay Unit Q 516.
7. Terminate Cable 6W from Special Relay Set as shown on Diagram. Connect 'BK' wire from BT No.36A or B.C. No.7A to Terminal 10. Strap Terminal 42 to 43.
8. When alternative ringing is provided, the supply from the Converter, Ringing No.5 may be used, instead of providing a Converter, Ringing No.7 at installations where this is required (see Q 503, Note 5), by strapping terminals 9-11 and 43-12.
9. When non-multiple circuits are not fitted, connect as shown in Fig.1B.

P.O.E.D. S BCH.	ISSUE		S1/3.	22.9.67.
PAPER:-W CIRC'LTN:- GENERAL				

H.E.S. No. 4
ALTERNATIVE RINGING ARRANGEMENTS.

FIG. 2.

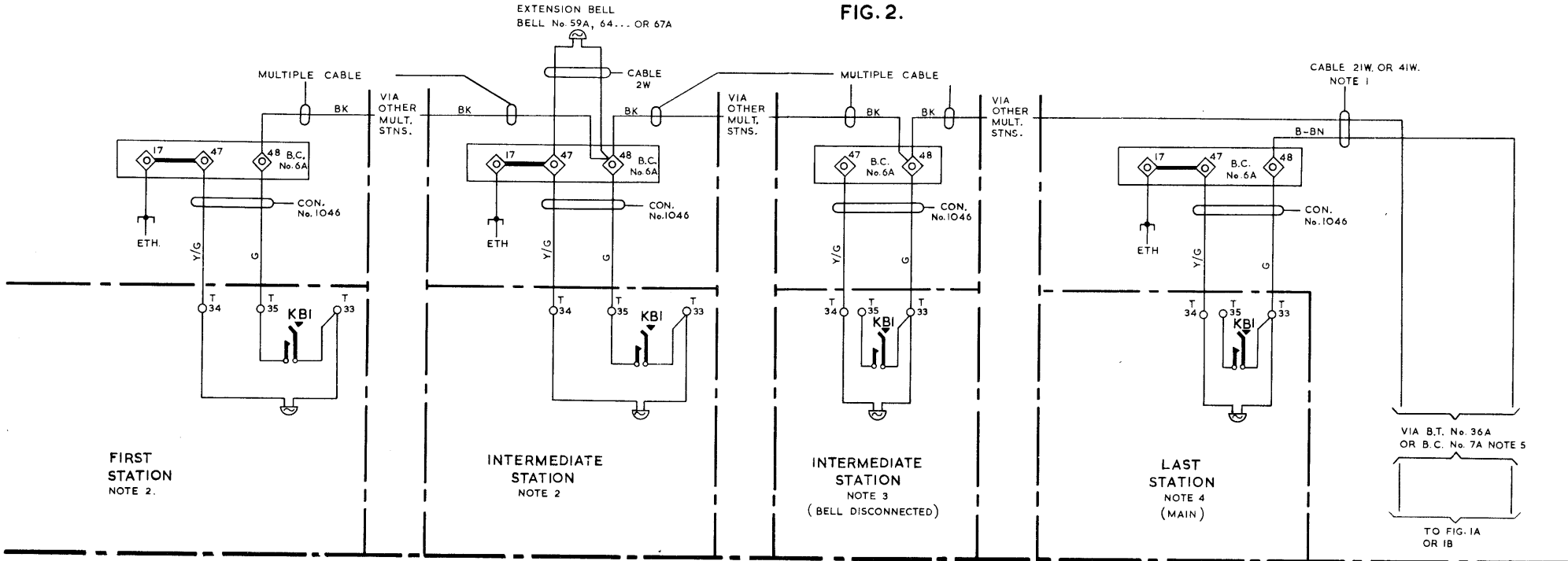


FIG. IB
NOTE 9

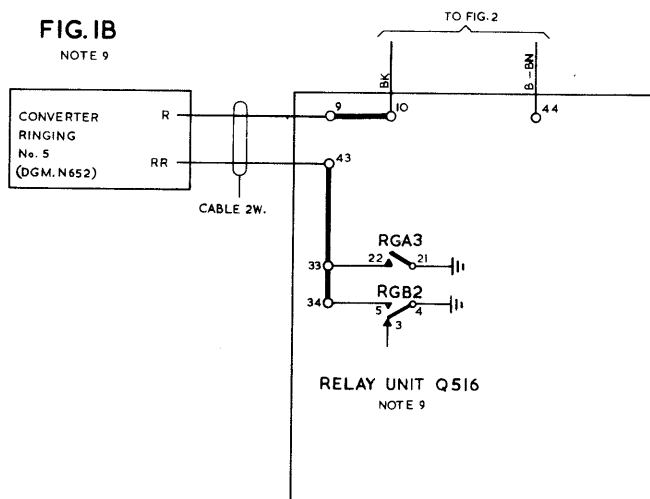


FIG. IA. NOTE 9

