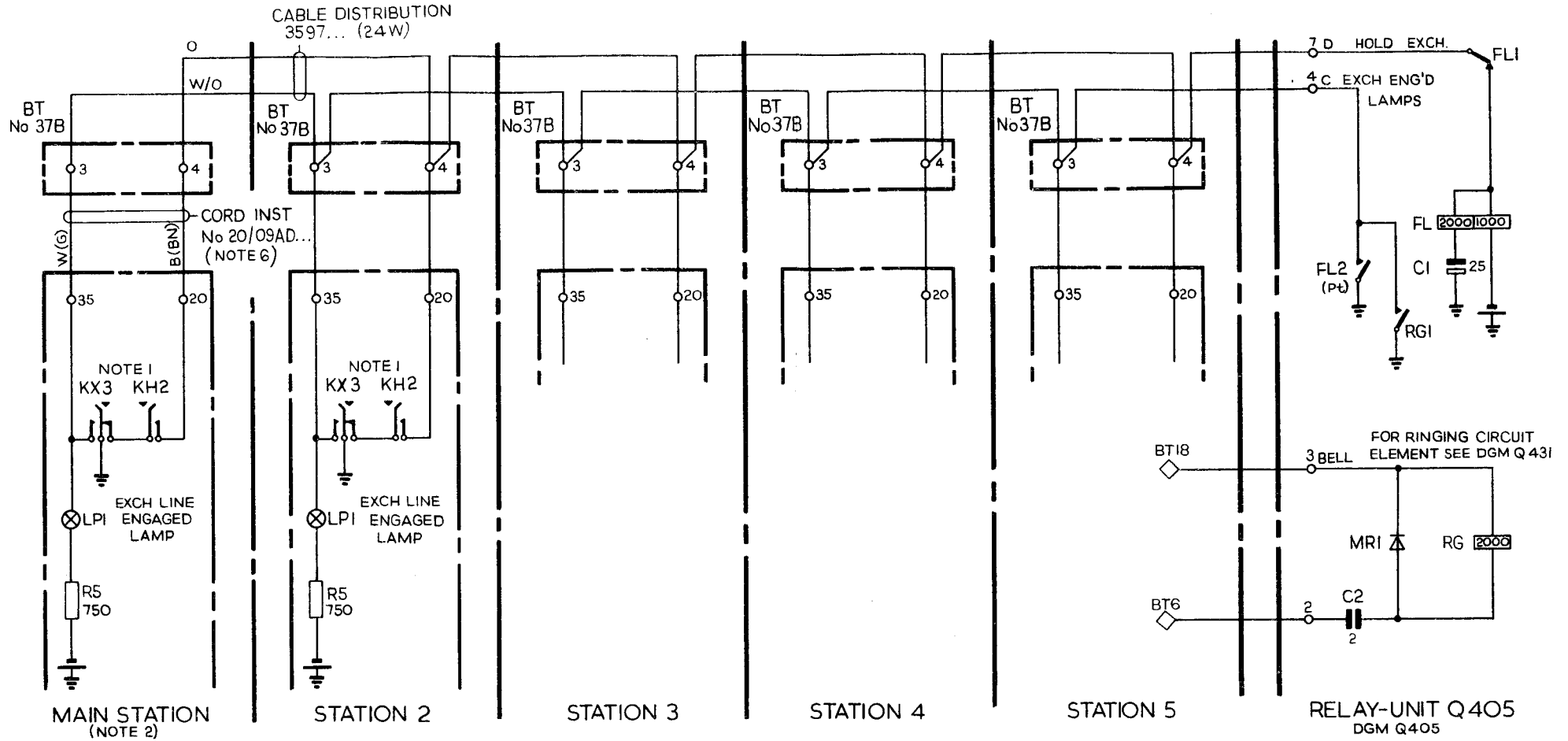


HES No 3 (KEYMASTER)

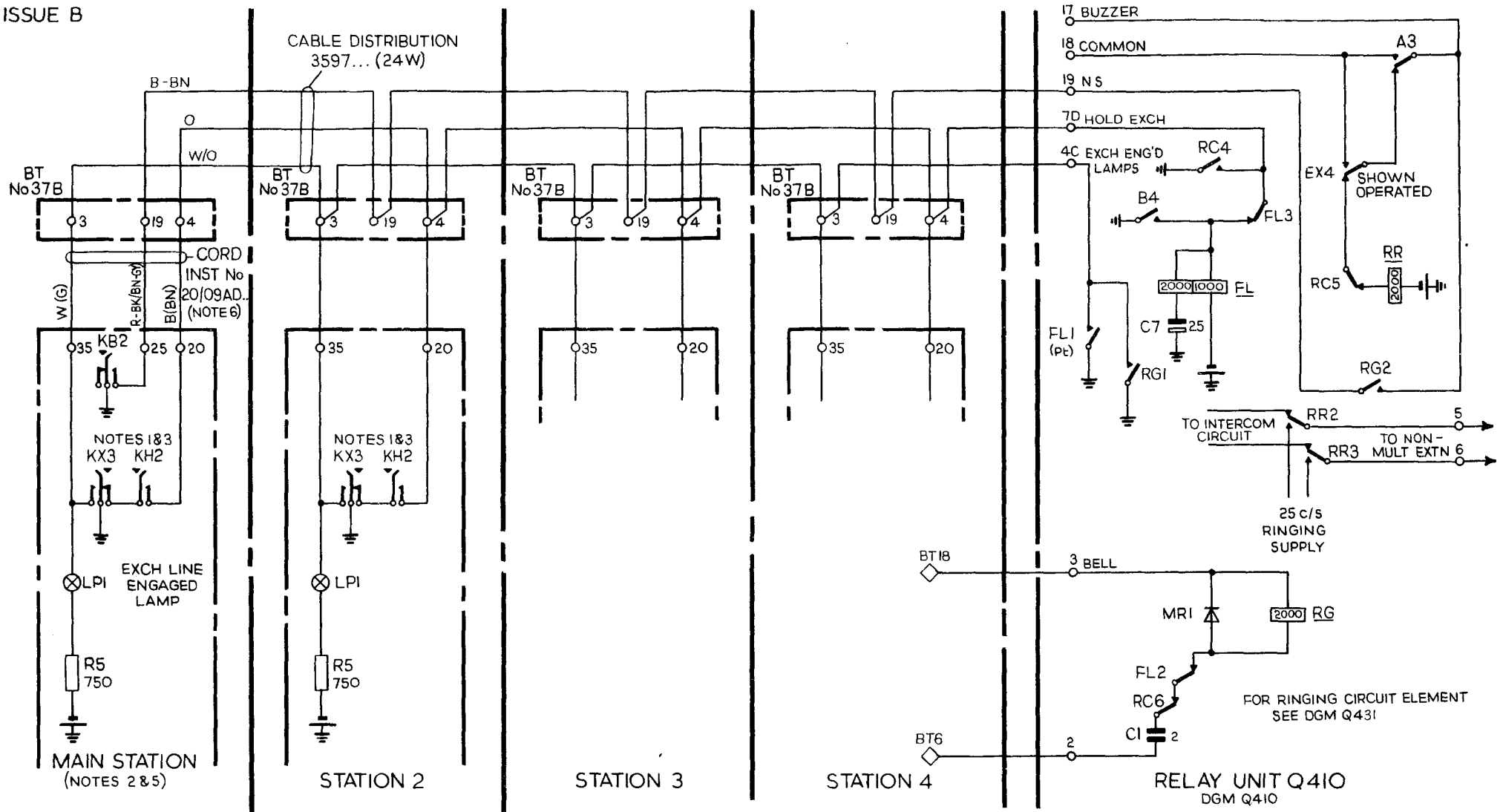
CIRCUIT ELEMENTS FOR EXCHANGE LINE ENGAGED LAMP, AND NIGHT SERVICE CONTROL

LINE ENGAGED AND HELD LAMP CIRCUIT, FOR INSTALLATION WITH MULTIPLE STATIONS ONLY



PO TELECOMMS HQRS PAPER: W DISTN GENERAL	ISSUE		
	B	NEW FORMAT. CORD WAS 20/03AJ.. NOTES REVISED <i>JK</i> TD7.2.3	15-11-74
	A	MINOR AMENDMENTS	20-8-63

EXCHANGE LINE ENGAGED AND HELD LAMP CIRCUIT, AND NIGHT SERVICE CONTROL
AT INSTALLATIONS WITH A NON-MULTIPLE EXTENSION



NOTES:-

1. AT STATION ENGAGING EXCHANGE LINE, SPRINGSETS KX AND KH WILL BE OPERATED GIVING A STEADY LAMP GLOW AT ALL STATIONS. DURING HOLD CONDITIONS KH SPRINGSETS ONLY WILL BE OPERATED AND THE LAMPS WILL FLASH AT ALL STATIONS (FL RELAY, IN RELAY-UNIT Q405, PULSING).
2. THE MAIN STATION CAN BE ANY ONE OF THE MULTIPLE STATIONS.
3. FOR MULTIPLE STATIONS ENGAGING AND HOLDING THE EXCHANGE LINE, SEE NOTE 1.
4. WHEN THE NON-MULTIPLE EXTENSION ENGAGES THE EXCHANGE LINE, RELAYS B AND FL IN RELAY-UNIT Q410 WILL BE OPERATED GIVING A STEADY LAMP GLOW AT ALL MULTIPLE STATIONS. DURING HOLD CONDITIONS RELAY B IS RELEASED AND RELAY RC IS OPERATED, RELAY FL WILL PULSE AND THE LAMPS WILL FLASH AT ALL MULTIPLE STATIONS.
5. KB2 IS OPERATED FOR NIGHT SERVICE:- RG WILL OPERATE TO EXCHANGE RINGING, RR WILL OPERATE TO KB2 EARTH VIA RG2, AND CONNECT LOCAL RINGING TO NON-MULTIPLE EXTENSION.
6. CORD CONDUCTOR COLOURS SHOWN IN BRACKETS REFER TO CORD INST No 20/03 AJ...