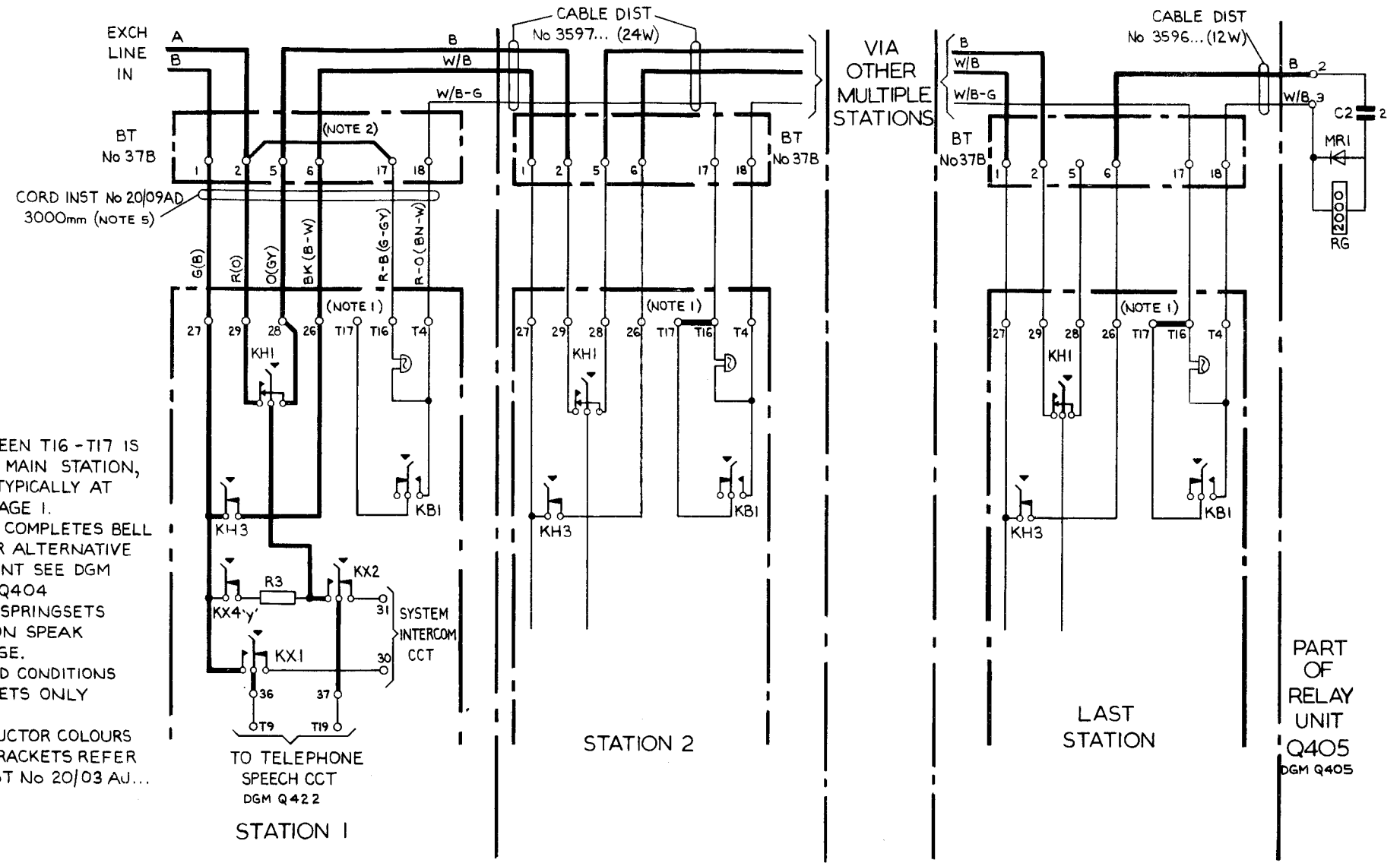


HES No 3 (KEYMASTER)
CIRCUIT ELEMENT - EXCHANGE LINE SPEECH & RINGING CIRCUIT
INSTALLATIONS WITH MULTIPLE STATIONS ONLY



NOTES:-

- 1 STRAP BETWEEN T16 - T17 IS REMOVED AT MAIN STATION, AS SHOWN TYPICALLY AT STN 1 ON PAGE 1.
- 2 THIS STRAP COMPLETES BELL CIRCUIT. FOR ALTERNATIVE ARRANGEMENT SEE DGM Q403 AND Q404
- 3 KX AND KH SPRINGSETS OPERATED ON SPEAK TO EXCHANGE.
- 4 DURING HOLD CONDITIONS KH SPRINGSETS ONLY OPERATED.
- 5 CORD CONDUCTOR COLOURS SHOWN IN BRACKETS REFER TO CORD INST No 20/03 AU...

TO TELEPHONE
SPEECH CCT
DGM Q422
STATION 1

STATION 2

LAST STATION

PART OF
RELAY UNIT
Q405
DGM Q405

ISSUE			
	B	NEW FORMAT. CORD WAS 20/03 AU <i>MA</i>	TD 7.2.3
	A	MINOR AMENDMENTS	20.8.63

PO
TELECOMMS
HQRS
PAPER:-W
DISTN
GENERAL

14-11-74

20.8.63

EXCHANGE LINE SPEECH & RINGING CIRCUIT
INSTALLATIONS WITH MULTIPLE STATIONS AND A NON MULTIPLE EXTENSION

