

H.E.S. No.3

NON-MULTIPLE EXTENSION
 PLAN IA (INTERNAL ONLY)
 USING TELEPHONE No. 710... (NOTE 5)

PAPER W CIRCULATION GENERAL	ISSUE			
		B	NOTE 6 AMENDED. MINOR AMENDMENTS. <i>M</i>	17-8-70
		A	NEW FORMAT. MINOR AMENDMENTS. F.E.I.T.	14-2-66
			<i>Bohrole</i> (1500) J.H. COMBRIDGE TD 2-3-3	20-8-64

NOTES :-

1. THE FACILITIES OF PLAN 1A ARE SHOWN ON DGM. N1425.

2. APPARATUS REQUIRED:-

MAIN

TELEPHONE NO. 710...

1 PART 22/DBU/260

1 PART 23/DBU/260

1 PART 1/DPL/378

1 PART 1/DPL/379

1 BLOCK TERMINAL NO. 3FA

1 THERMISTOR NO. 1A-1 (MAIN ONLY)

1 CORD INSTRUMENT NO. 5/37AA...

1 SWITCH NO. 5A-4

1 SWITCH No. 5A-4 (NOTE 6)

INTERMEDIATE

ITEMS AS MAIN PLUS

1 PART 3/DBU/262

1 CORD INSTRUMENT No. 6/44 AA... INSTEAD OF CORD INST. 5/37AA...

1 SWITCH 5A-4

LAST

ITEMS AS MAIN PLUS.

1 PART 3/DBU/262

1 SWITCH 5A-4

3. REARRANGE STRAPS ON TELES. AND BLOCKS TERMINAL AS SHOWN.

4. WHEN EXTN. BELL IS REQUIRED CONNECT IN PLACE OF STRAP AT BT3-9. TOTAL NUMBER OF BELLS, INCLUDING BELLS IN TELEPHONES, MUST NOT EXCEED THREE.

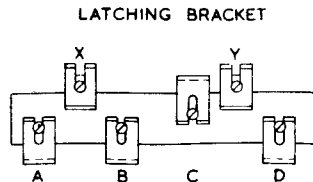
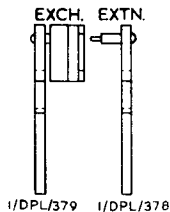
5. A MAXIMUM OF TWO EXTENSIONS, THREE TELEPHONES NO. 710 IN ALL, MAY BE PROVIDED.

6. AT MAIN AND EXTENSION TELE. NO. 710... REMOVE PLUGGERS FROM **POSITION B AND C**
FIT PART 1/DPL/379 IN POSITION B WITH SWITCH 5A-4 (METAL BRACKET TYPE) OR SWITCH 5A-4 A
FIT PART 1/DPL/378 IN POSITION C WITH SWITCH 5A-4
 AT EXTENSION TELE. NO. 710... FIT SWITCH 5A-4 IN POSITION A.

IN TELEPHONE COVER FIT PART 22/DBU/260 IN POSITION B, FIT PART 23/DBU/260 IN POSITION C,

FIT PART 3/DBU/262 IN POSITION A.

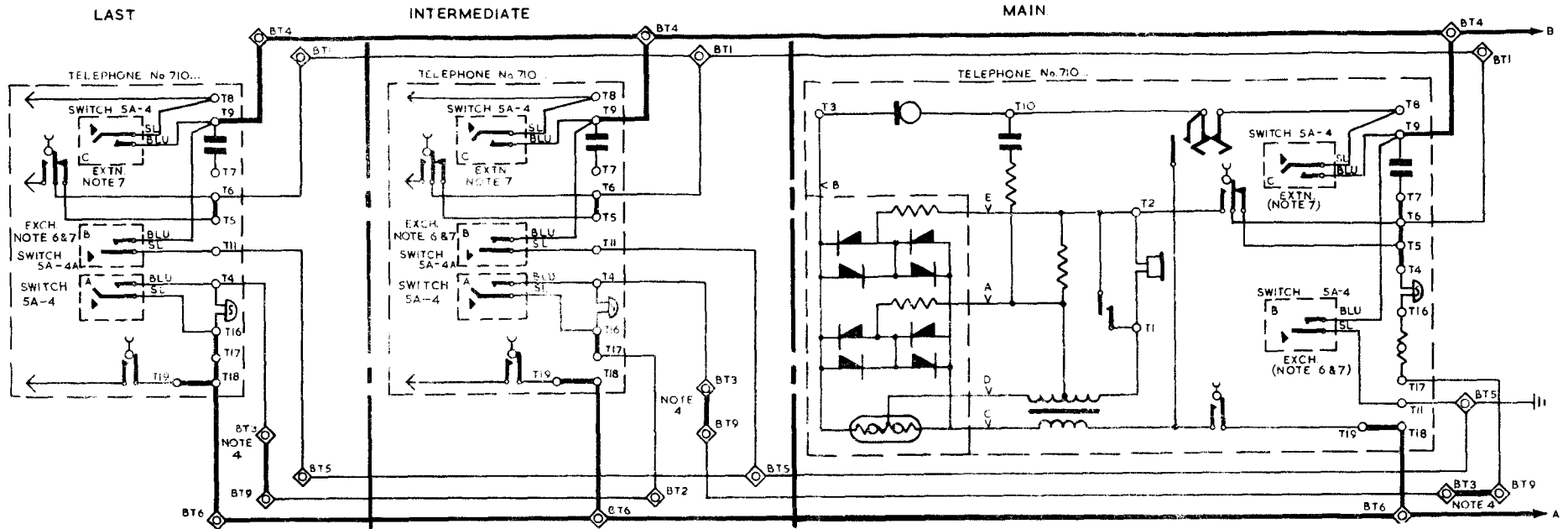
ADJUST LATCH BRACKET AS SHOWN.



BRACKET VIEWED FROM FRONT OF TELEPHONE WITH COVER AND DIAL REMOVED.

7. EXTENSION SWITCH (LOCKING) OPERATES SINGLY RETURNING LOOP TO MAIN STATION. EXCHANGE SWITCH (NON LOCKING) ALSO OPERATES EXTENSION SWITCH CONTACTS PROVIDING EARTHED LOOP CALLING TO SWITCH RELAY UNIT Q519

8. ANY SPARE LEADS SHOULD BE SECURED ON SPARE TERMINALS OR ELECTRICALLY INSULATED.



WIRING NOTE 3

