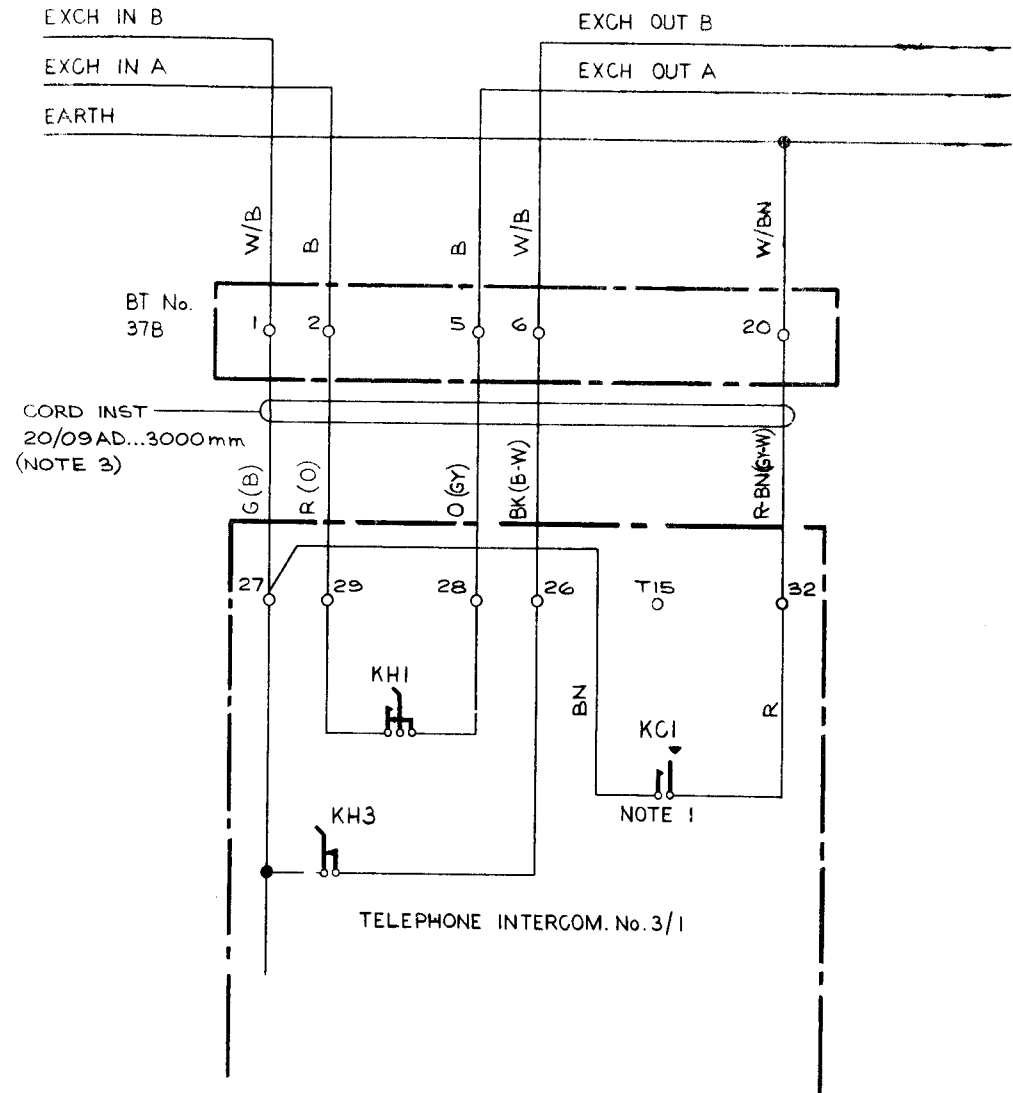


NOTES :-

1. REMOVE RED AND BROWN FLEXIBLE LEADS FROM TERMINAL T15 AND RECONNECT AS SHOWN.
2. FOR PROVISION OF OPERATOR RECALL WHERE METER No 19 IS FITTED, SEE DGM. Q412
3. CORD CONDUCTOR COLOURS IN BRACKETS REFER TO CORD INST No 20/03AJ...



PO TELECOMMS HQRS	ISSUE			
		A NEW FORMAT CORD WAS 20/03AJ...72" <i>JHC</i> TD 7.2.3	16-10-74	
PAPER:- W DSTN:- GENERAL		JHC	15-5-62	