

H. E. S. No. 3
EXCHANGE LINE MONITORING
RELAY UNIT Q409

NOTES :-

- Relay Unit Q409 is mounted in Telephone Intercom. No.3/1 at the monitoring station by fixing under screw of right-hand bell gong viewed from front of telephone. Pass relay unit leads along side of telephone base to terminal strip.
- Exchange line is connected to the monitoring station; using spare multiple conductors or an additional Cable 4W, as shown. In Block Terminal No.37B at Station 1 strap Terminal 1 to 21 and Terminal 2 to 22. Connect spare multiple conductors to Terminals 21 to 22. At intermediate stations strap these conductors through the multiple using spare Terminals 21 and 22 in Block Terminal No.37B. At monitoring station terminate these conductors on Terminals 21 and 22 in Block Terminal No.37B
- At the monitoring Station replace Cord Inst. No.20/09 AD by 25/06 AD..3000mm connected as in Dgm. Q424 with modification and additional connexions as follows :-

In the Tele. Intercom No 3/1... :-

- Shift BN wire from T31 to T7
- Shift GY wire from T30 to T14
- Connect R-GY wire to T11
- Connect W-B wire to T12
- Connect 3 spare wires to T13, insulate spade ends if this terminal is not spare.

At Block Terminal No 37... :-

- Connect R-GY wire to Terminal 21
- Connect W-B wire to Terminal 22
- Connect 3 spare wires to Terminal 25

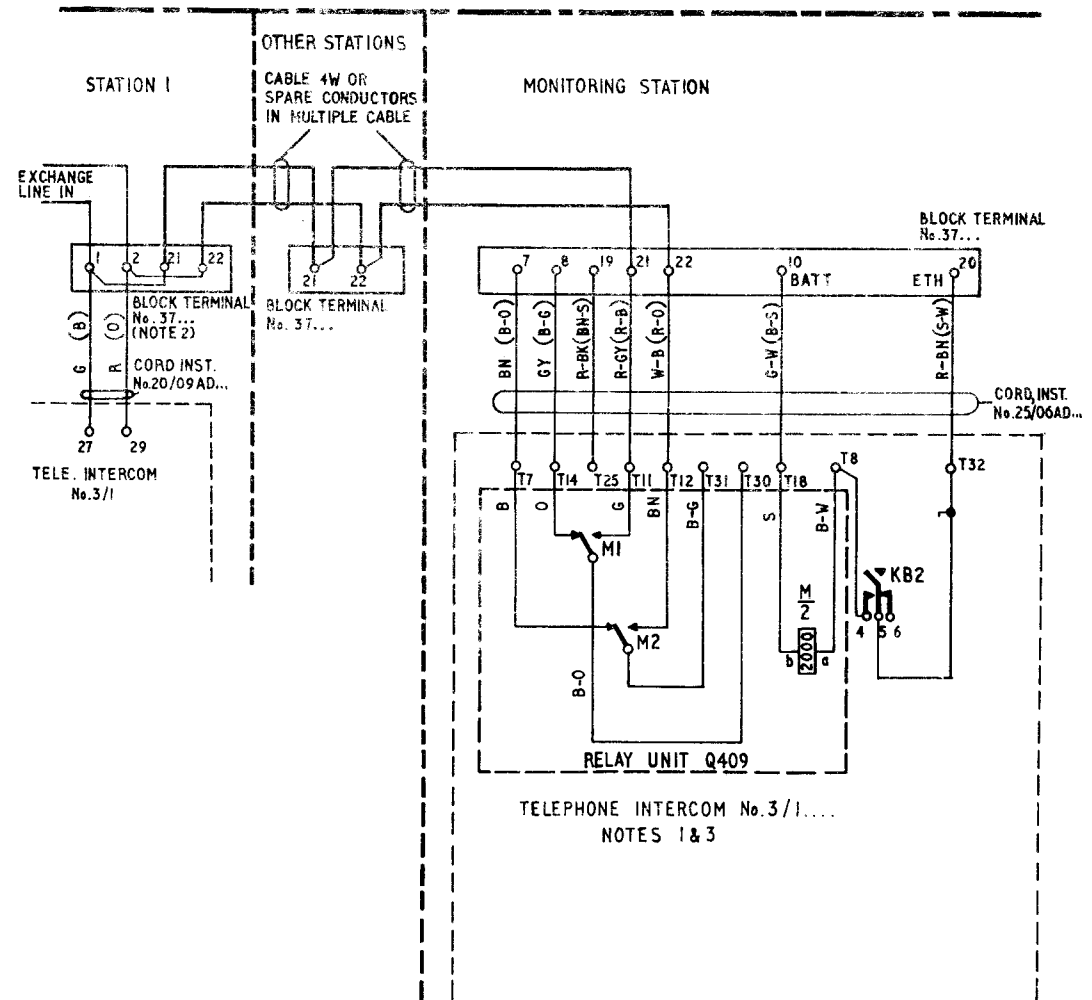
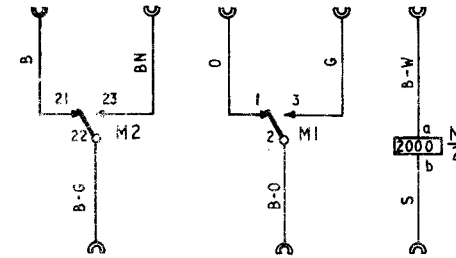
Relay Unit Q409 to be connected as shown.

Apparatus required

- Relay Unit Q409
- Cord Inst. No.25/06 AD..3000mm
- Part 5/DBU/341 colour (see Dgm. Q430)

- The cord conductor colours shown in brackets refer to Cords Inst. No.20/03AJ... and 25/04AJ fitted to earlier telephones.

RELAY UNIT Q409
INCLUDES RELAY No.16/2 (RELAY $\frac{M}{2}$)



P O TELECOMMS HQRS. COLOUR:- W			
DISTN :- GENERAL	ISSUE		
	D	CORDS WERE No's 20/03AJ AND 25/04AJ	22.10.74
	C	REDRAWN NEW FORMAT	4.10.67