

H.E.S. No.3

TYPICAL MULTIPLE CONNEXIONS (SCHEMATIC).

Q(L) 403
8 PANELS-1
15-5-62.

NOTES:-

1. AT INSTALLATIONS WITH MULTIPLE STATION ONLY RELAY UNIT Q405 IS USED AND MAY BE FITTED AT THE BEGINNING OR END OF THE MULTIPLE.
2. AT INSTALLATIONS WITH A NON MULTIPLE EXTENSION, RELAY UNIT Q410 IS USED AND IS FITTED AT THE END OF THE MULTIPLE BEYOND THE LAST STATION.
3. WHERE LESS THAN 5 STATIONS ARE PROVIDED THE UNWANTED SECTIONS OF CABLE ARE OMITTED AND THE REQUIRED RELAY-UNIT FITTED AS DESCRIBED IN NOTES 1 & 2.
4. WHEN RELAY UNIT Q410 REPLACES STATION 5, WIRE TERMINALS 11 AND 17 AS FOLLOWS (SEE ALSO Q(L) 404 NOTE 7).

TERMINAL 11

NON-MULTIPLE STATION TO CALL STATION 1, CONNECT TO TERMINAL 12, B.T. 37...
 " " " " " STATION 2, " " " 13, " "
 " " " " " STATION 3, " " " 14, " "
 " " " " " STATION 4, " " " 11, " "

TERMINAL 17

WHEN RELAY UNIT Q410 IS CONNECTED AS:- STATION 5 CONNECT TO TERMINAL 15, B.T.37...AT STATION 4
 STATION 4 " " " 15, " " " " 3
 STATION 3 " " " 14, " " " " 2
 STATION 2 " " " 13, " " " " 1

THE SAME COLOURS OF THE SELECTED MULTIPLE WIRES ON TERMINALS 11 TO 15 (B.T.37...) AT THE LAST MULTIPLE STATION, ARE TO BE USED FOR CONNEXIONS TO TERMINALS 11 AND 17 OF THE RELAY-UNIT Q410.

5. THE CONVERTOR, RINGING No.7 IS NORMALLY MOUNTED ON FIXING HOLES PROVIDED INSIDE THE POWER UNIT No.51A.
6. WHEN G/AC OUT SIGNALLING IS REQUIRED FIT CONVERTOR, RINGING No.7. USE CABLE P.V.C. No.1 2W TO CONNECT OUTPUT TO TAGS B9(R) AND B10(RR) OF RELAY UNIT Q415. (SEE NOTE 5).
7. THE COLOUR OF THE WIRE USED TO CONNECT TERMINAL 11, (BT 37...) TO TAG A48 (RELAY UNIT Q415) IS AS FOLLOWS:- IF RELAY UNIT Q415 IS STATION 1 USE SL. IF RELAY UNIT Q415 IS STATION 4 USE W/BL-OR.
 " " " " " STATION 2 " W/SL. " " " " " STATION 5 " W/BL-WH.
 " " " " " STATION 3 " BLU-WH.

CIRCULATION	GENERAL
	SUFFIX
PAPER	W
	AMENDMENT
NUMBER OF PANELS WAS 4.	
MINOR AMENDMENTS.	
24.1.66 B	
SALW 19:9:63 A	

8. CONNECT ONE OF THE TAGS A45, A46 OR A47 IN RELAY UNIT Q415, TO THAT TERMINAL IN B.T.37, WHICH IS MULTIPLIED TO TERMINAL 11 OF MAIN STATION B.T.37. THE SAME COLOUR WIRE AS THAT USED IN THE MULTIPLE SHOULD BE USED. THE TERMINAL USED FOR EACH SIGNALLING GROUP IS GIVEN IN THE TABLE BELOW.

SIGNALLING GROUP	TERML. NO.	SIGNALLING GROUP	TERML. NO.
A/WE BOTHWAYS	A46	G/AC BOTHWAYS	A45
G/AC IN, A/WE OUT	A45	G/AC IN, LOOP OUT	A45
A/WE IN, G/AC OUT	A46	A/BAL BATT BOTHWAYS	A47
LOOP IN, G/AC OUT	A46		

9. WHEN G/AC OUT SIGNALLING IS REQUIRED USE CABLE P.V.C. No. 1.2W. TO CONNECT TAGS 22 AND 23 OF RELAY UNIT Q410, TO TAGS B10 AND B9 OF RELAY UNIT Q415.
10. ONLY, IF THE EXTENSION OF EXCHANGE CALLS VIA THE RELAY UNIT Q415 IS AUTHORISED CONNECT THE BLU-BRN WIRE BETWEEN B.T.37... TERMINAL 19 AND TAG A43.
11. TERMINALS 17 AND 18 ON B.T.37... MUST BE STRAPPED TOGETHER TO COMPLETE BELL CIRCUIT.
12. MULTIPLE CIRCUITS WIRE CODES ON PANELS 3 TO 8, AND TERMINALS ON B.T.37..., ARE AS FOLLOWS:

CCT.	EXCH. LINE				EXCH ENG'D LAMP	EXCH HOLD	INTERCOM				BUZZER SIGNAL	STATION ENG'D	A.C. BELL I/C EXCH CALLS		EARTH FOR MISC. FACILITIES	-50V	ETH.
	IN		OUT				SPEECH CCT.	ENG'D LAMP	HOME BUZZER	BELL IN			BELL OUT				
WIRE CODE	A	B	A	B	C	D	A1	B1	L		B1 B2 B3 B4 B5	COMMON	BELL IN	BELL OUT	N.S.	BATT	ETH.
TERM'L NO.	2	1	5	6	3	4	7	8	9	11	11 12 13 14 15	16	17	18	19	10	20

* TERMINALS FOR WIRES B1 TO B5 VARY ACCORDING TO THE STATION NUMBER.

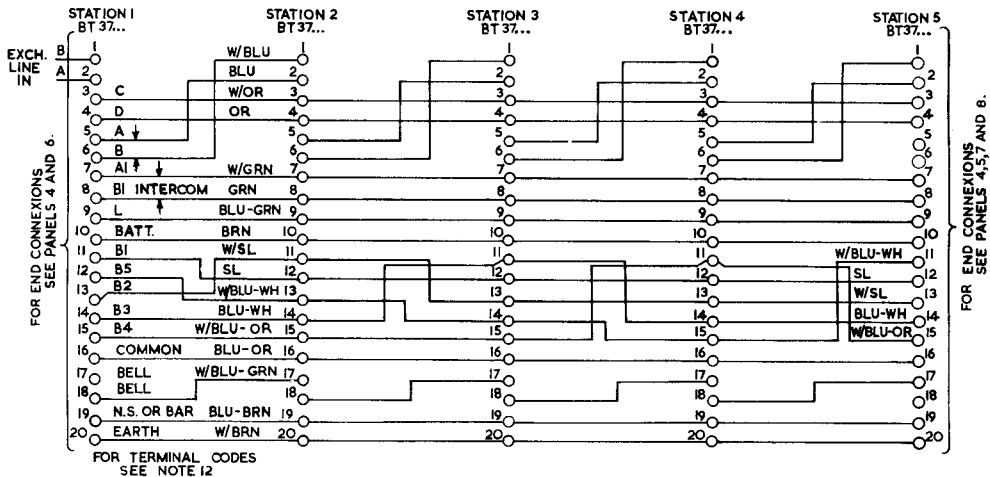
13. RELAY UNIT Q415 PRECEDES RELAY UNIT Q410, WHICH IS ALWAYS THE LAST STATION.

FIVE MULTIPLE STATIONS

Q(L) 403

8 PANELS-3

CIRCULATION	GENERAL
	Suffix
NUMBER OF PANELS WAS 4 MINOR AMENDMENTS.	B
	A
PAPER	W
	Amndt

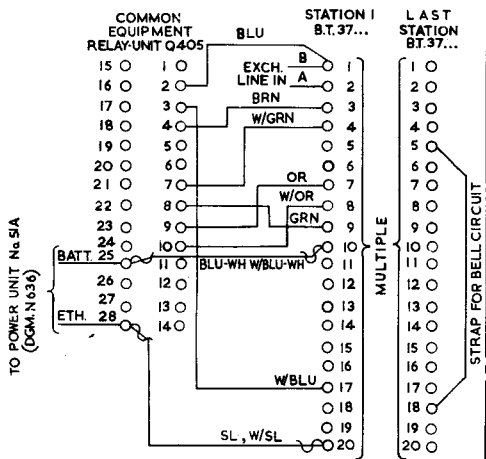


Q(L) 403

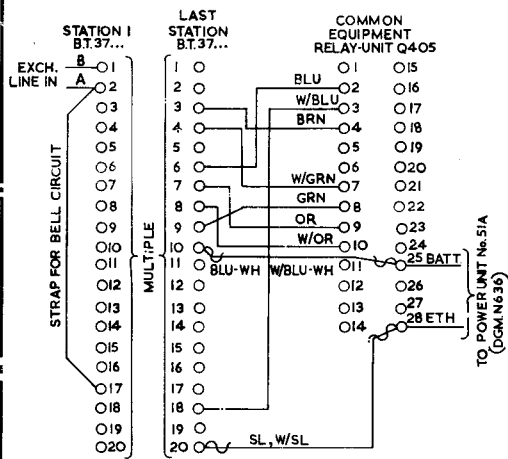
8 PANELS-4

TYPICAL MULTIPLE CONNEXIONS (SCHEMATIC)
COMMON EQUIPMENT. RELAY-UNIT Q405

(NOTE 1)



RELAY-UNIT Q405 CONNECTED AT BEGINNING OF MULTIPLE

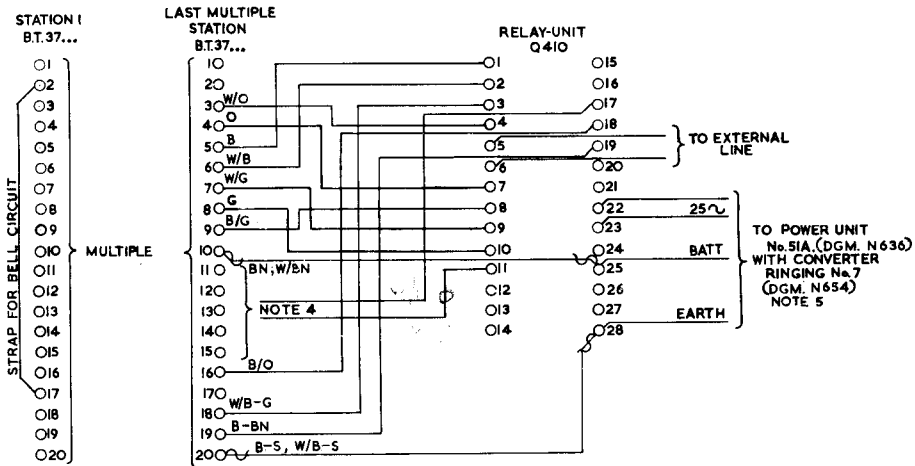


RELAY-UNIT Q405 CONNECTED AT END OF MULTIPLE

CIRCULATION	GENERAL
	Suffix
Amend.	24 / 66 B S.A.L.W.9-9-63 A
	NUMBER OF PANELS WAS 4. MINOR AMENDMENTS.
PAPER	W

COMBINED COMMON EQUIPMENT & NON-MULTIPLE RELAY UNIT Q410.

Q(L)403
8 PANELS-5

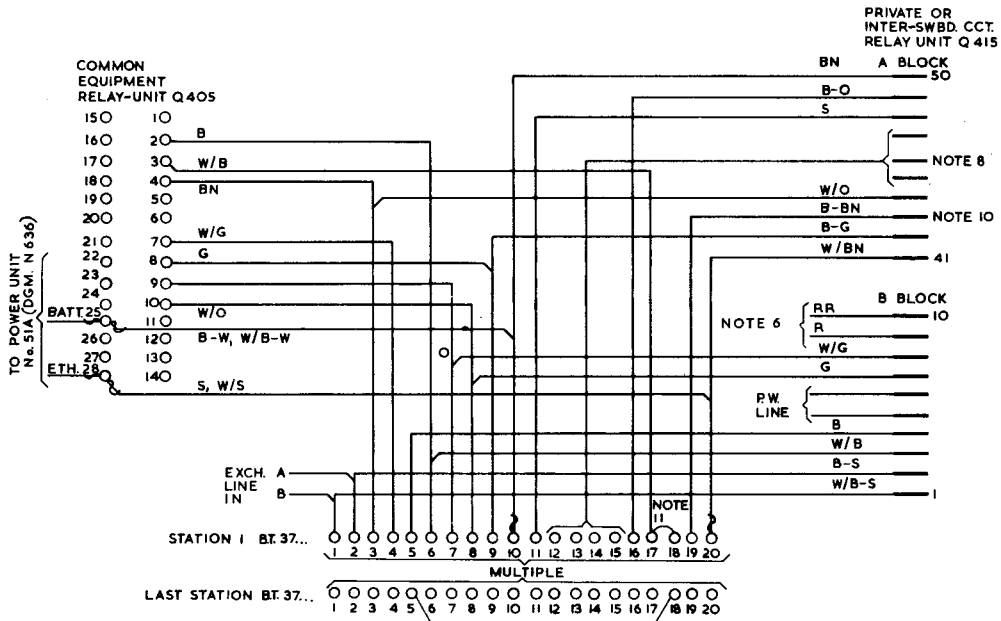


NON-MULTIPLE STATION

Q(L)403

8 PANELS-6

RELAY UNITS Q405 AND Q415 AT BEGINNING OF MULTIPLE. PRIVATE OR INTER-SWITCHBOARD CIRCUIT STATION I.



CIRCULATION
GENERAL

Suffix
B
24, 65
B 9-63
A

Amend.

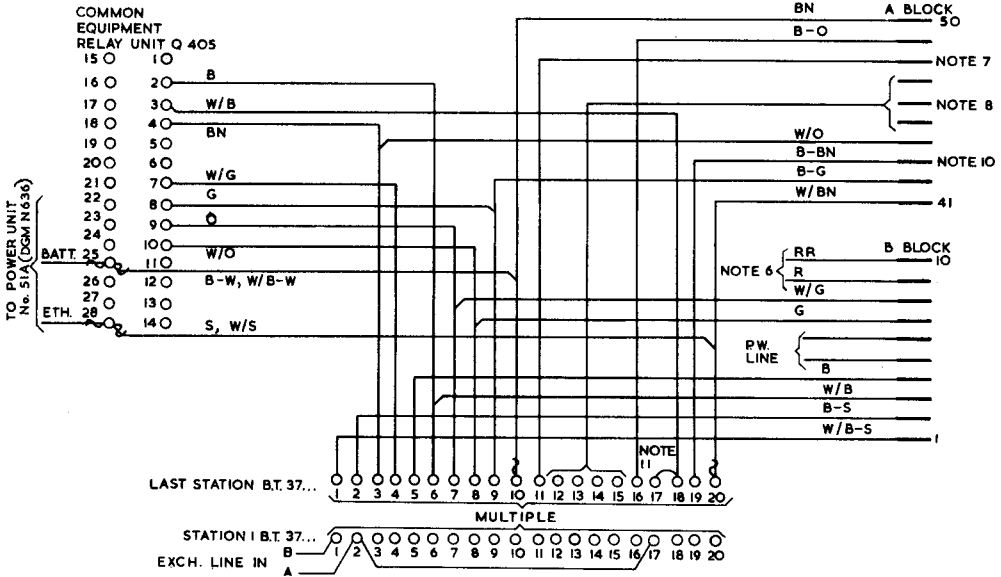
PAPER
W

RELAY UNITS Q405 AND Q415 AT END OF MULTIPLE.
PRIVATE OR INTER-SWITCHBOARD CIRCUIT LAST STATION.

Q(L)403

8 PANELS-7

PRIVATE OR INTER-SWBD. CCT.
RELAY UNIT Q415



Q(L)403
8 PANELS-8

RELAY UNITS Q410 AND Q415 AT END OF MULTIPLE, PRIVATE OR INTER-SWITCHBOARD CIRCUIT STATION 4. (NOTE 13)

