

HOUSE EXCHANGE SYSTEM

EXPLANATORY ELEMENTS OF BARRED AND RESTRICTED EXCHANGE ACCESS.

Q(L) 305

4 PANELS -1.
21-2-53

NOTES :-

1. **BARRED STATION EXCHANGE LINE TERMINATION.**
AT A BARRED STATION (PANEL 2) EXCHANGE SERVICE IS PROHIBITED. THE MULTIPLE C, D & DI WIRES ARE NOT LINKED TO THE INSTRUMENT STRIP OF THE BARRED STATION. INSTEAD THE C WIRE TERMINAL OF THE INSTRUMENT IS CONNECTED TO THE EARTH COMMON SO THAT THE STATION BUZZER WILL BE OPERATED WHENEVER AN EXCHANGE LINE BUTTON IS DEPRESSED.

2. **RESTRICTED STATION EXCHANGE LINE TERMINATION.**
AT A RESTRICTED STATION (PANEL 3) EXCHANGE SERVICE IS PERMITTED ONLY AT THE DISCRETION OF THE MAIN STATION ATTENDANT. THE D WIRE TERMINAL ON THE INSTRUMENT STRIP OF THE RESTRICTED STATION IS CROSS-CONNECTED TO THE DI WIRE INSTEAD OF TO THE D WIRE OF THE MULTIPLE. THE RELAY AA CAN ONLY BE OPERATED WITH THE ASSISTANCE OF THE MAIN STATION ATTENDANT. (PANEL 4. SHOWS AN EXCHANGE CALL BEING TRANSFERRED TO A RESTRICTED STATION.)

3. **TRANSFERRING EXCHANGE CALL FROM MAIN TO RESTRICTED STATION.** PANEL 4. SHOWS AN EXCHANGE CALL BEING TRANSFERRED FROM THE MAIN TO A RESTRICTED STATION.
AT THE MAIN STATION THE LOCAL KEY OF THE RESTRICTED STATION IS DEPRESSED & AFTER THE CONNECTION HAS BEEN ESTABLISHED, THE CALLED STATION IS REQUESTED TO DEPRESS THE APPROPRIATE BUTTON OF THE EXCHANGE LINE.
THIS OPERATES THE LOCAL BUZZER VIA CONTACT IH1 OPERATED, THE MULTIPLE C WIRE, TO EARTH VIA CONTACTS IH1, AA2 & HM2 OPERATED AT THE MAIN STATION. BUZZER TONE IS RETURNED TO THE TELEPHONE AT THE MAIN STATION VIA CONTACT IX3 OPERATED & THE MULTIPLE A WIRE OF THE RESTRICTED STATION.
ON RECEIPT OF TONE THE MAIN STATION ATTENDANT DEPRESSES THE "EXCHANGE CALL" BUTTON OF THE UNIT TRANSFER & AT THE SAME TIME REPLACES THE HANDSET, WHICH RELEASES AA RELAY AT THE MAIN & G RELAY AT THE UNIT TRANSFER.
THE RESTORATION OF G3 CONTACT APPLIES EARTH VIA THE "EXCHANGE CALL" BUTTON & THE MULTIPLE DI WIRE, TO OPERATE THE AA RELAY OF THE RESTRICTED STATION VIA TERMINAL ID, CONTACT AA4 NORMAL & CONTACTS IH2, & HM3 OPERATED.
CONTACT AA4 PROVIDES THE HOLDING CIRCUIT FOR AA RELAY TO THE EARTH COMMON, & CONTACTS AA2 & IH1 OPERATED APPLY EARTH VIA THE MULTIPLE C WIRE TO OPERATE RELAY G AT THE UNIT TRANSFER.
G RELAY OPERATED REMOVES THE INDICATOR FROM ACROSS THE EXCHANGE LINE, & THE EARTH FROM THE MULTIPLE D WIRE AT CONTACT G3, TO PREVENT INTRUSION FROM OTHER STATIONS.

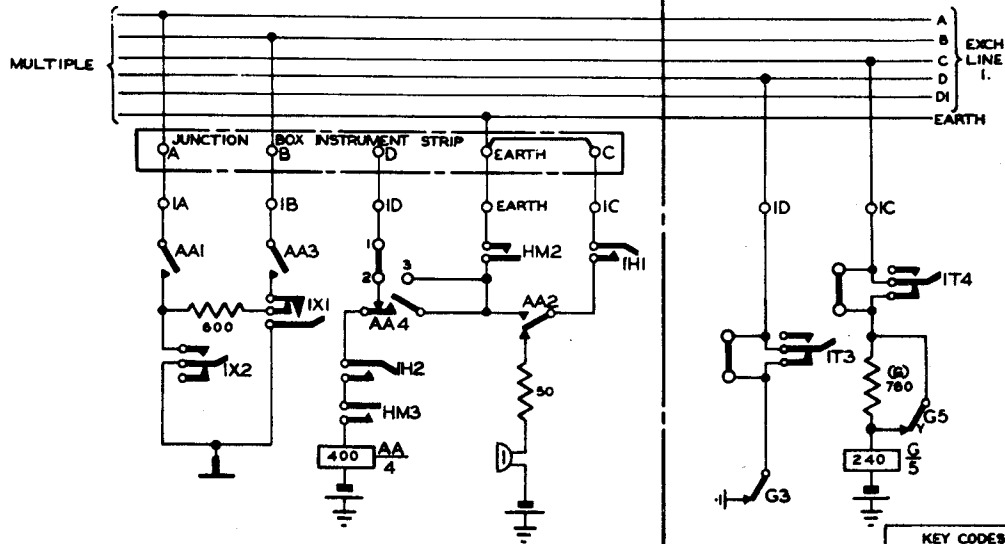
Q(L) 305

4 PANELS-2.

BARRED STATION EXCHANGE LINE TERMINATION (NOTE 1.)

MULTIPLE STATION

UNIT TRANSFER INTERCOM.



KEY CODES:-
X- SPEAK EXCHANGE
H- HOLD EXCHANGE
HM- CRADLE SWITCH
T- TRANSFER

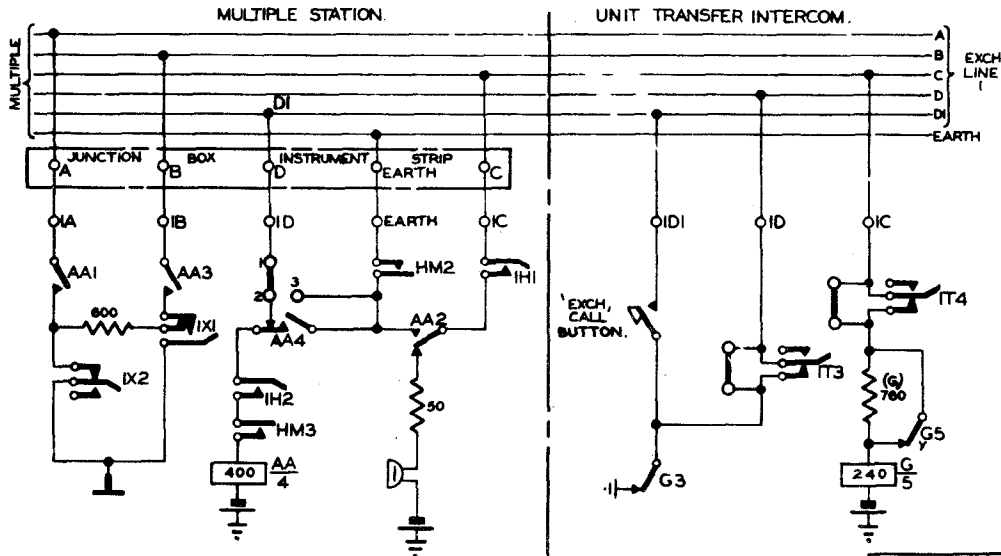
HOUSE EXCHANGE SYSTEM

EXPLANATORY ELEMENTS

RESTRICTED STATION EXCHANGE LINE TERMINATION (NOTE 2)

Q(L)305
4 PANELS-3
21-2-55

GENERAL



W

KEY CODES -	
X	— SPEAK EXCHANGE
H	— HOLD EXCHANGE
HM	— CRADLE SWITCH
Y	— TRANSFER

Q(L) 305
4 PANELS-4

TRANSFERRING EXCHANGE CALL FROM MAIN TO RESTRICTED STATION (NOTE 3)

