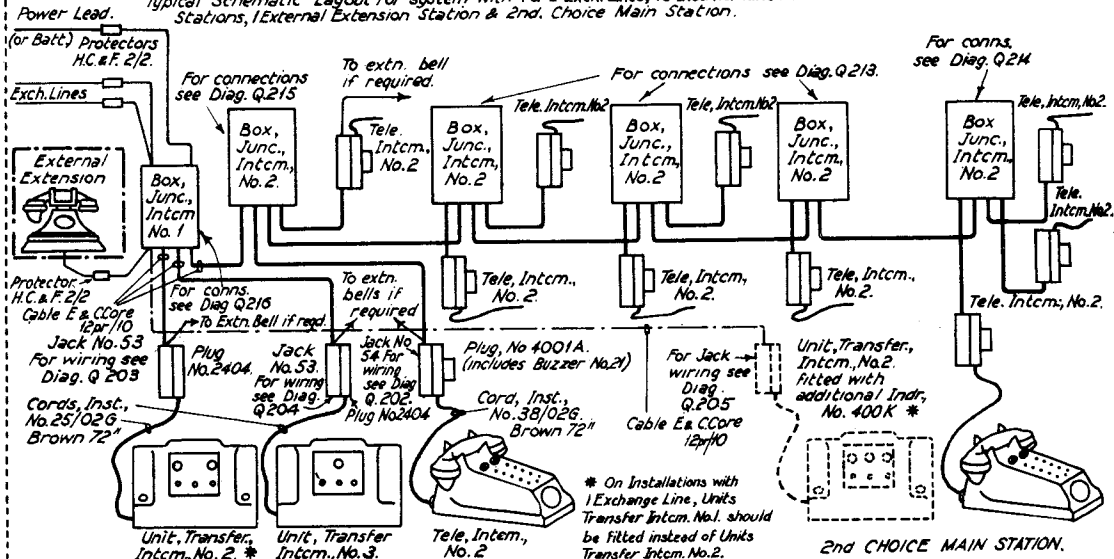


HOUSE EXCHANGE SYSTEM.

Q(L) 212 3. 4. 35.

Typical Schematic Layout for system with 1 or 2 Exch. Lines, 10 Internal Extension Stations, 1 External Extension Station & 2nd. Choice Main Station.

8	Notes added on installations with Exchange lines etc.
9	2.36 A
10	12.9.34
11	14.7.38 C
12	
13	
14	
15	
16	
17	
18	
19	
20	
21	
22	
23	
24	
25	
26	
27	
28	
29	
30	
31	
32	
33	
34	
35	
36	
37	
38	
39	
40	
41	
42	
43	
44	
45	
46	
47	
48	
49	
50	
51	
52	
53	
54	
55	
56	
57	
58	
59	
60	
61	
62	
63	
64	
65	
66	
67	
68	
69	
70	
71	
72	
73	
74	
75	
76	
77	
78	
79	
80	
81	
82	
83	
84	
85	
86	
87	
88	
89	
90	
91	
92	
93	
94	
95	
96	
97	
98	
99	
100	



NOTE:-

1. The diagram shows the maximum number of stations which may be connected
2. A junction box layout similar to the above will be suitable for the majority of systems but in some cases it may be preferable to adopt layouts as shown on Diag. Q.151.
3. The 12pr/10 cable and additional Unit, Transfer, Intcm., No. 2. (shown dotted) will be fitted only when a 2nd choice main station is required.
4. The multiple cable should be terminated on the centre terminal strips of the junction boxes
5. The Exchange Lines may be brought into the multiple at any point on the system.
6. Plug point connections are shown on Diag. Q.152.
7. All cables to be Cable, E & C Core 20pr/10 except where shown otherwise.