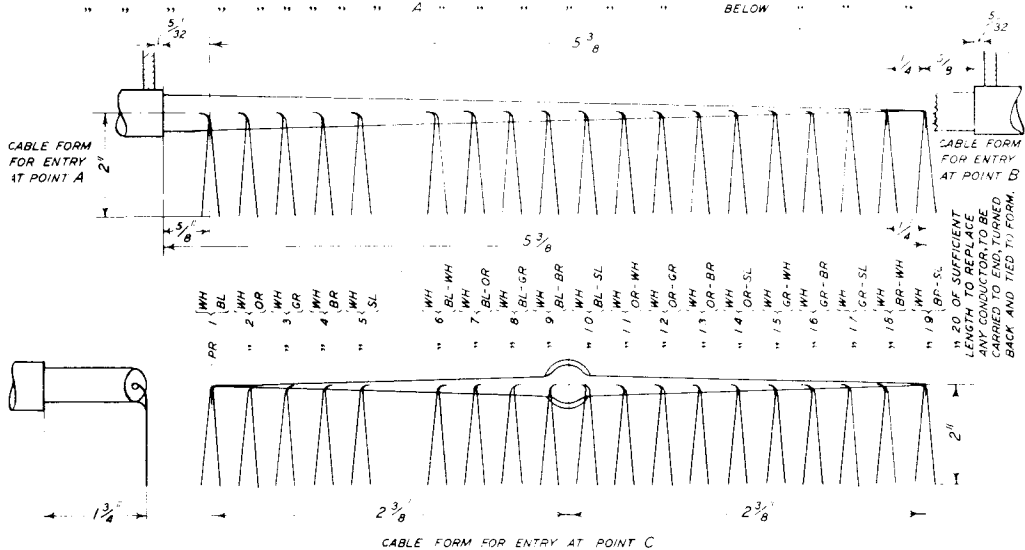


Q(L)202
2 PANELS - 1

CABLE FORMS FOR JACK WIRING FOR TELE. INTERCOM., No. 2.

NOTE

WHEN THE CABLE ENTRY IS TO BE AT POINT B OF THE JACK REFER TO DIMENSIONS ABOVE CABLE FORM DIAGRAM



FOR POSITION OF ENTRY POINTS A, B & C AND POSITIONS IN WHICH THE JACK MAY BE PLACED SEE Q204 NOTE 2