

HOUSE EXCHANGE SYSTEM

NON-MULTIPLE STATION TERMINATION FOR OPERATING LOUD SOUNDING BELL, HOOTER OR LAMP SIGNAL

Q(L)199

3 PANELS - 1
29-7-53

NOTES

- THIS DGM. SHOWS THE APPARATUS REQUIRED FOR A MAINS OPERATED SIGNAL AT A NON-MULTIPLE STATION TELEPHONE. IT CONSISTS OF A SENSITIVE RECTIFIED RELAY, & A RELAY-SWITCH.
FOR CERTAIN APPLICATIONS SOME OF THESE ITEMS ARE NOT REQUIRED. SEE E.I. TELEPHONES STATIONS Q 3001.
- RELAY 'D' IS CONNECTED DIFFERENTIALLY WHEN LI CONTACT OPERATES. CURRENT FLOWS IN BOTH COILS UNTIL CAPACITOR IS CHARGED WHEN CURRENT CEASES IN COIL A-B. THE RELAY IS THEN OPERATED BY THE CURRENT IN COIL D-E. WHEN RELAY 3549 IS USED (PANEL 3) THE COIL LETTERING IS AS FOLLOWS:
FOR COIL TAG 'a' ON DGM. READ 'e'

..	..	'b'	'd'
..	..	'd'	'b'
..	..	'e'	'a'
- FOR A CONTINUOUS OR DISCONTINUOUS MAINS OPERATED BELL, HOOTER OR LAMP SIGNAL THE APPARATUS SHOULD BE CONNECTED AS SHOWN USING THE APPROPRIATE L OR NL TYPE RELAY-SWITCH.
- FOR A CONTINUOUS-RINGING TREMBLER BELL OMIT THE RELAY-SWITCH, & FIT INDICATOR No. 4001AN TO CONTROL THE TREMBLER BELL. THE INDICATOR TO BE CONNECTED TO THE 'DI' CONTACT OR EXCEPTIONALLY TO LI CONTACT IF 'D' RELAY IS NOT REQUIRED.
- A DISCONTINUOUS-RINGING TREMBLER BELL MAY BE OPERATED DIRECT FROM LI CONTACT, OMITTING THE OTHER APPARATUS.
- THE POWER SUPPLY MAY BE BY POWER LEAD P.B.X. BATTERY OR AC MAINS POWER UNIT (POWER-UNIT No. 53A DGM. N631 MAINS SUPPLY TAKEN FROM RELAY-SWITCH BLOCK).
- POWER-UNIT No. 53A (10v) SUPERSEDES RECTIFIER No. 29A (12v) FOR NEW WORK. RELAY No. 4089 IS USED WITH POWER-UNIT No. 53A. RELAY No. 3549 IS USED WITH RECTIFIER No. 29A.
- THE APPARATUS SHOULD BE MOUNTED ON A WALLBOARD, X, & SHOULD BE INSTALLED IN ACCORDANCE WITH E.I. TELEPHONES STATIONS A 3117. WHERE A RELAY-SWITCH No. 3106, L, IS USED THIS MUST BE FITTED WHERE THE RELEASE BUTTON IS ACCESSIBLE TO A PERSON ANSWERING THE TELEPHONE.
- THE SUBSCRIBER SHOULD PROVIDE A 2 AMP BSI 3 PIN WALL-SOCKET AC MAINS SUPPLY (250V. MAX.) WITH PLUG, TO BE FITTED ADJACENT TO THE RELAY-SWITCH.
- FOR MAINTENANCE PURPOSES RECT. 29A IS SUPERSEDED BY RECT. 97A WHICH WILL BE ISSUED IN LIEU.

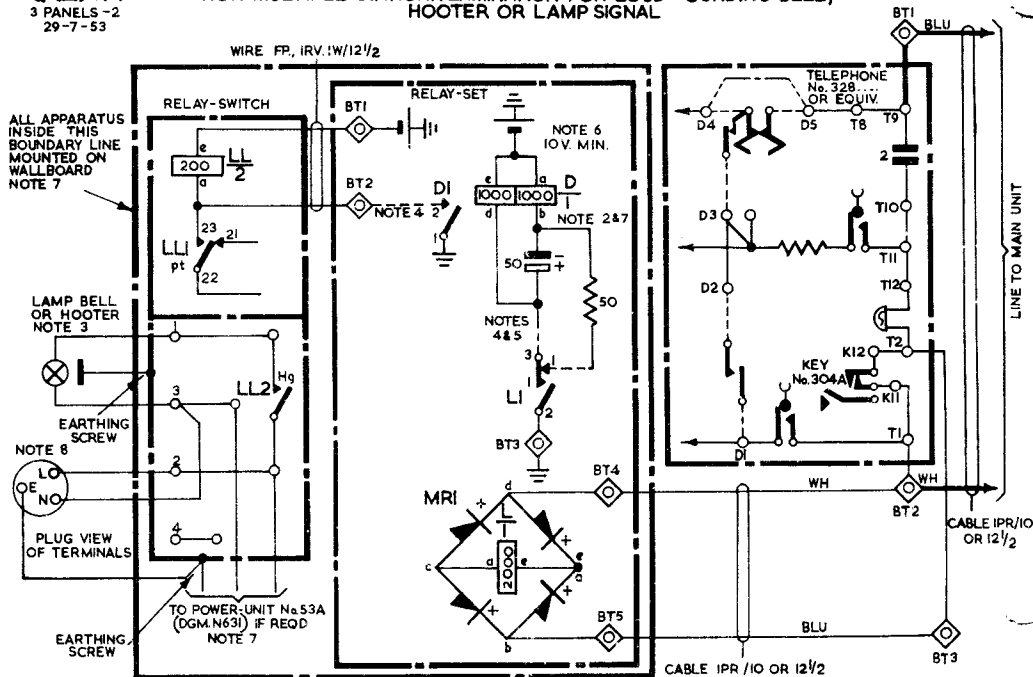
APPARATUS SCHEDULE

D	RELAY No. 4089 NOTE 7
L	RELAY No. 6884
RS	RELAY-SWITCH No. 3106, L 1-15 AW OR No. 3106 NL 1-15 AW
MRI	RECTIFIER-ELEMENT No. 4/6A
RI	RESISTOR, COIL No. 12-50Ω
CI	CAPACITOR, ELECTROLYTIC No. 3112-50mf

CIRCULATED	GENERAL
Suffix	
REDRAWN PANEL 3 MADE YEO. WAS PANEL 2 MIR CIRCUIT CORRECTED A.G. ELA.	1. 8.52 R M. 53 A
Amend.	
PAW	W

QL) 199
 3 PANELS - 2
 29-7-53

NON-MULTIPLE STATION TERMINATION FOR LOUD SOUNDING BELL,
 HOOTER OR LAMP SIGNAL



HOUSE EXCHANGE SYSTEM

NON-MULTIPLE STATION TERMINATION FOR LOUD SOUNDING BELL, HOOTER OR LAMP SIGNAL

Q(L)199
3 PANELS - 3
SUPERSEDED BY PANEL 2 FOR
NEW WORK 29-7-53

GENERAL

REDRAWN PANEL 3 MADE VEC. WAS PANEL 2 18-62 B
1MR CIRCUIT CORRECTED A.G. F.L.R.

WIRE FP, IRV. IW/12 1/2

ALL APPARATUS
INSIDE THIS
BOUNDARY LINE
MOUNTED ON
WALLBOARD
NOTE 7

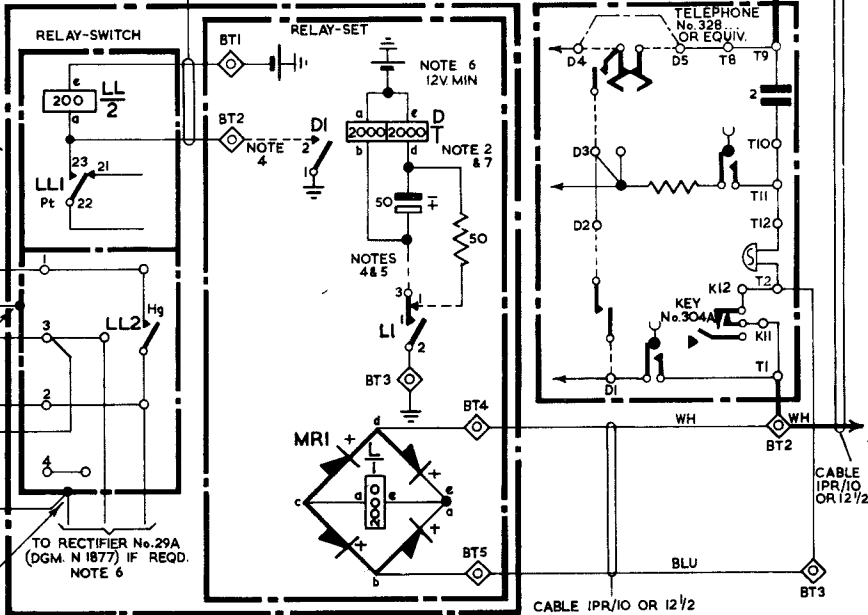
LAMP, BELL
OR HOOTER
NOTE 3

EARTHING
SCREW

NOTE 8
LO
OE
NO

PLUG VIEW OF
TERMINALS

EARTHING
SCREW



NOTE 6
12V. MIN

NOTE 2
& 7

NOTES
4 & 5

TO RECTIFIER No. 29A
(DGM. N 1877) IF REQD.
NOTE 6

CABLE IPR/10 OR 12 1/2

LINE TO MAIN UNIT

CABLE IPR/10
OR 12 1/2

PA Y
AMENDT