

CIRCULATION

GENERAL

Q(L)161.

4 PANELS-1

11-9-48

SUPERSEDED BY
Q(L)209 FOR NEW WORK

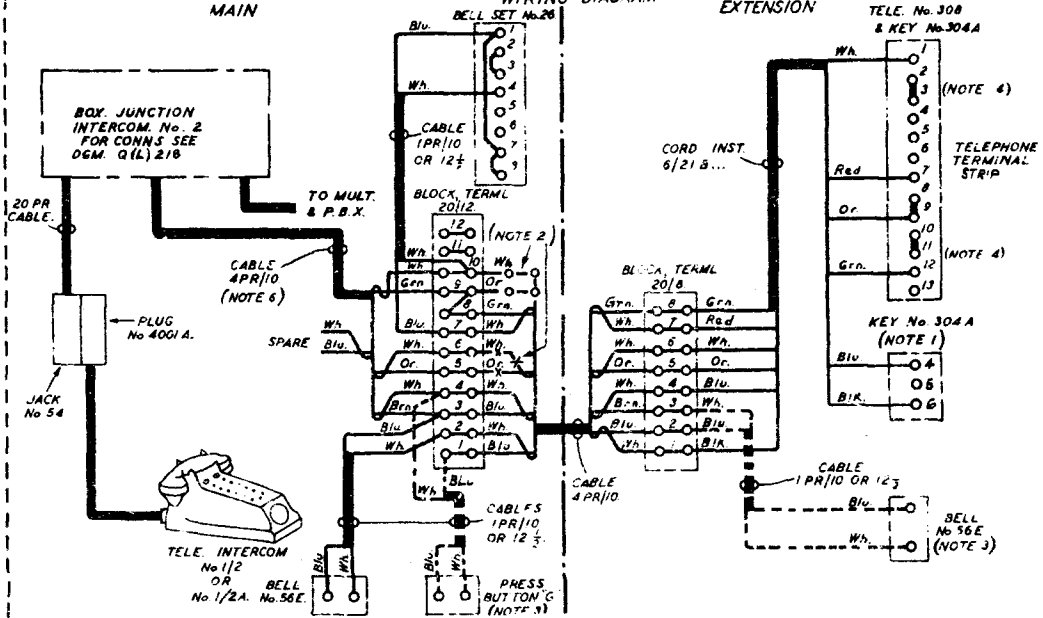
HOUSE EXCHANGE FACILITIES BETWEEN PBX. EXTENSIONS PLAN EXTENSION INSTRUMENT (FOR PBX CALLS ONLY) OFF 4E EXTN. INSTRUMENT.

WIRING DIAGRAM

MAIN

EXTENSION

11-10-56 A
SUPERSESSION NOTE ADDED
AMENDMENT



Y

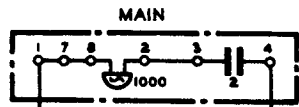
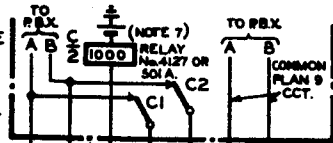
Q(L) 161
4 PANELS - 2

RELAY CASE
OR P.B.X.
SEE Q(L) 180

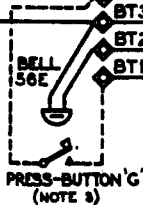
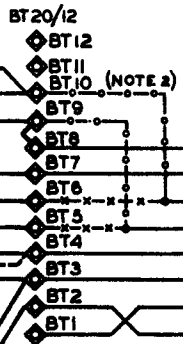
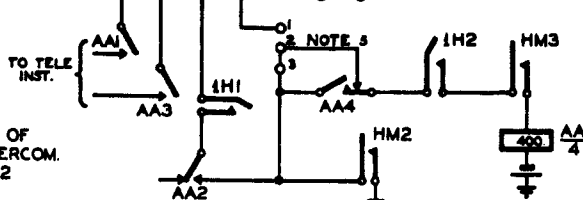
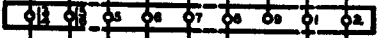
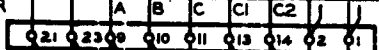
PART OF
PLAN EXTN. OR
INST. STRIP
OF JUNCTION
BOX
FOR FULL CONNS.
SEE DGM. Q(L) 218

PART OF
PLUG No. 4001 A
AND JACK No. 54
FOR FULL CONNS.
SEE DGM. Q(L) 208

PART OF
TELE. INTERCOM.
No. 1/2
OR



BELL-SET No. 26



NOTE 8

NOTES.

1. KEY No. 304A & ONE PART No. 1/SPL/325 TO BE REQUISITIONED SEPARATELY.
DIAL, AUTO SS No. 10... TO BE REQUISITIONED SEPARATELY IF REQUIRED.
2. FOR SECURITY AGAINST EXTENSION MAKE CONNEXIONS THUS
-o-o- INSTEAD OF -x-x-x-
3. IF SIGNALLING IS REQUIRED FROM MAIN TO EXTENSION PROVIDE PRESS BUTTON & TREMBLER BELL WITH WIRING AS SHOWN THUS -----
4. REMOVE STRAP BETWEEN TERMINAL 11 & 12 & PROVIDE STRAP BETWEEN TERMINALS 2 & 3.
5. REMOVE STRAP 1-2 AND CONNECT STRAP 2-3 IN AA RELAY CCT. IF PLAN 9 IS REQUIRED TREAT 'AB' RELAY CCT. SIMILARLY.
6. WIRE TO JUNCTION BOX OR JACK AS CONVENIENT.
FOR TERMINATION ON JACK SEE DGM. Q(L) 206
7. RELAY (No. 4127) ADJUSTMENTS TO E.I. TELEPHONES AUTO. B5144.