

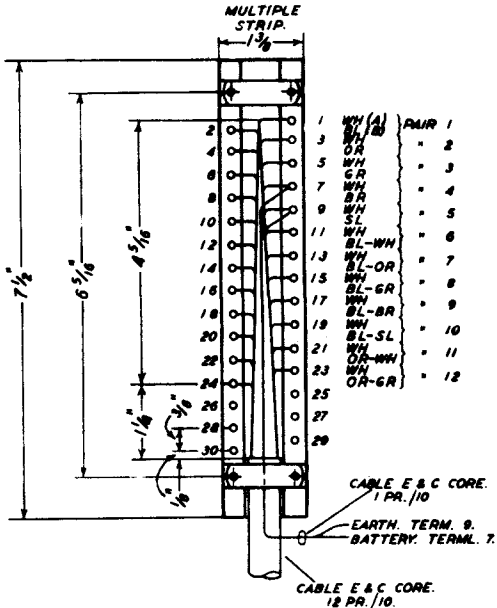
CIRCULATION  
GENERAL

# HOUSE EXCHANGE SYSTEM. CABLE TERMINATIONS BACK OF STRIPS.

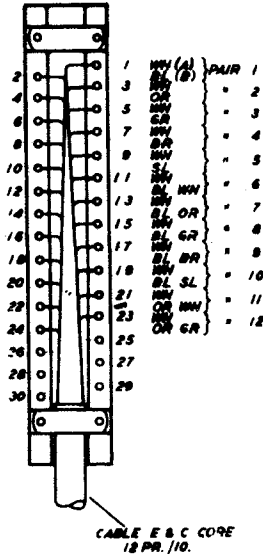
QLV15 26-6-38  
3 PANELS-1

				28.10.38 A
Penell rumberg. (L) added to No.				
Amendment				

W



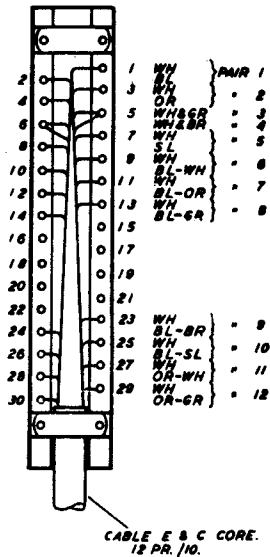
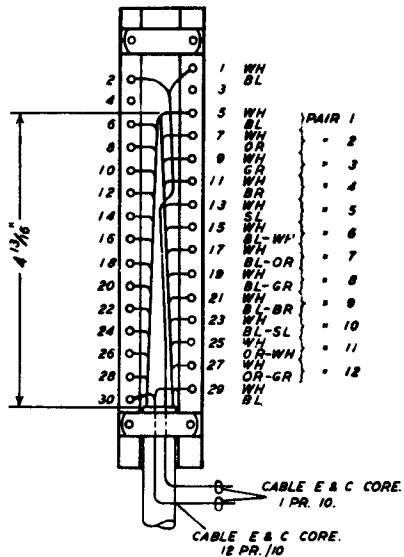
INSTRUMENT STRIP



CABLE TERMINATIONS  
BACK OF STRIPS.

EXCHANGE EXTERNAL EXTENSION  
& 2<sup>ND</sup> CHOICE MAIN STRIP.

UNIT  
STRIP.



# HOUSE EXCHANGE SYSTEM.

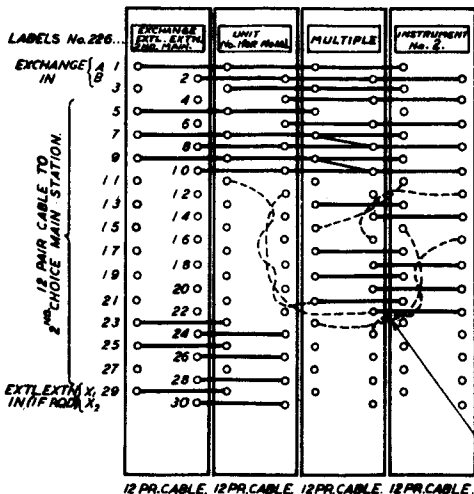
Q(L)115.20.6.35.

3 PANELS-3

TYPICAL WIRING OF JUNCTION BOX FOR FEEDING 1<sup>ST</sup> CHOICE MAIN STATION ON INSTALLATIONS WITH ONE EXCHANGE LINE AND UP TO 6 STATIONS (WITH OR WITHOUT AN EXTERNAL EXTENSION STATION.)

BOX, JUNCTION, INTERCOM., No. 1.  
FRONT CONNECTIONS.

SHOWN WIRED FOR FEEDING STATION No. 2. (MAIN STATION.)



## CABLE TERMINATIONS.

UNIT TERMLS.	1 <sup>ST</sup> MAIN TERMLS.	MULT. TERMLS.	INST. TERMLS.
A		A	A
B		B	B
C		C	C
D		D	SPARE
D'	SP	COM	COM
COM	BATT	BATT	BATT
BATT	EARTH	EARTH	EARTH
EARTH	EARTH	SPARE	EARTH
HL	SPARE	SPARE	HL
R			R
SPARE		A 1	A 1
SPARE		B 2	B 2
		A 3	A 3
		B 4	B 4
		A 5	A 5
		B 6	B 6
A	A	A	SPARE
B	B	B	SPARE
C	C		
D	D		
S	OR SPARE		
T	OR SPARE		
X <sub>1</sub>	OR SPARE		
X <sub>2</sub>	OR SPARE		

## NOTES.

- HL & R CONNECTED TO A & B RESPECTIVELY.
- ON INSTALLATIONS HAVING AN EXTERNAL EXTENSION STATION, TERMINALS 11 & 12 (HL & R) ON THE UNIT STRIP MUST BE CONNECTED TO THE A & B TERMINALS CORRESPONDING TO THE EXTERNAL EXTENSION NUMBER ON THE MULTIPLE STRIP THE CONNECTIONS WHEN EXTERNAL EXTENSION IS No. 5 ARE SHOWN ON THE DIAGRAM.

———— LINK CONNECTIONS. (BARE WIRE.)

----- CONNECTIONS WITH WIRE, SWITCHBOARD  
1 PR/1 1/2 TWIN. (ORANGE - ORANGE WHITE)

SPARE = SPARE WIRES TERMINATED.

ADDITIONAL CONNECTIONS REQUIRED ON INSTALLATIONS WITH 6 STATIONS.