



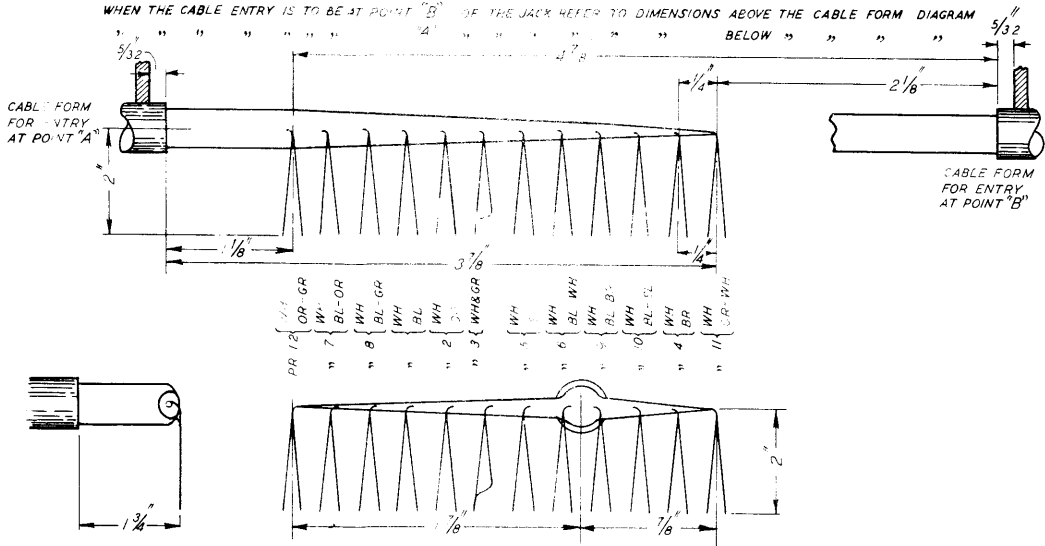
Q(L)103

2 PANELS - 2

NO. 7

CABLE FORMS FOR JACK WIRING FOR UNIT TRANSFER, INTERCOM, No 1,  
OR FOR WIRELESS TELEPHONE MAIN STATION.

WHEN THE CABLE ENTRY IS TO BE AT POINT "B" OF THE JACK REFER TO DIMENSIONS ABOVE THE CABLE FORM DIAGRAM



CABLE FORM FOR ENTRY AT POINT "C"

FOR POSITION OF ENTRY POINTS A B & C AND POSITIONS IN WHICH THE JACK MAY BE PLACED SEE Q204(NOTE 2)