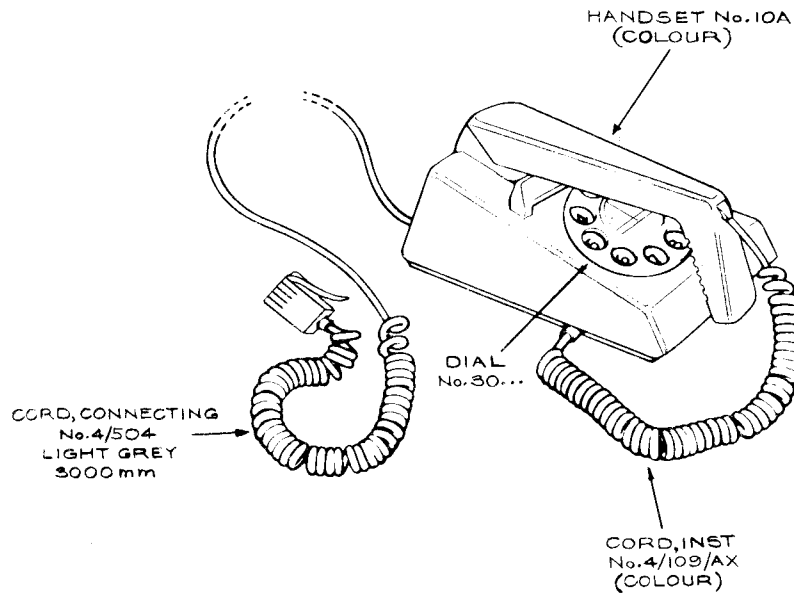


TELEPHONE No.8722G (COLOUR)

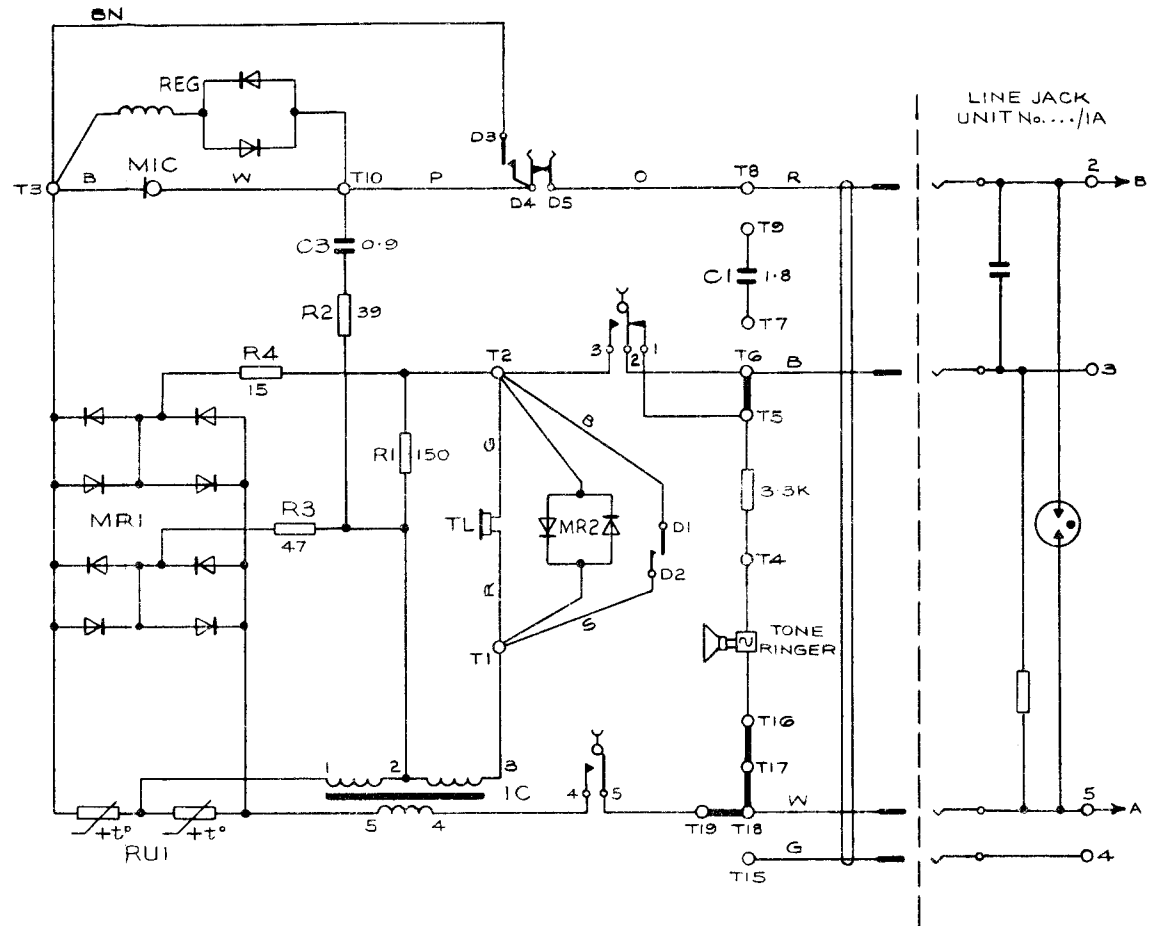
TABLE TELEPHONE WITH PROVISION FOR ONE PRESS-BUTTON FOR USE ON AUTO SYSTEMS.

FIG.1 CIRCUIT DIAGRAM SHOWING TELEPHONE No.8722G CONNEXIONS AS ISSUED.



CONTENTS

CIRCUIT DIAGRAM, SHOWING CONNEXIONS AS ISSUED	FIG.1
TELEPHONE No.8722G	FIG.2
2-WIRE PBX EXTENSIONS WITH RECALL	FIG.3
OFF POSITION ON TONE RINGERS	FIG.3



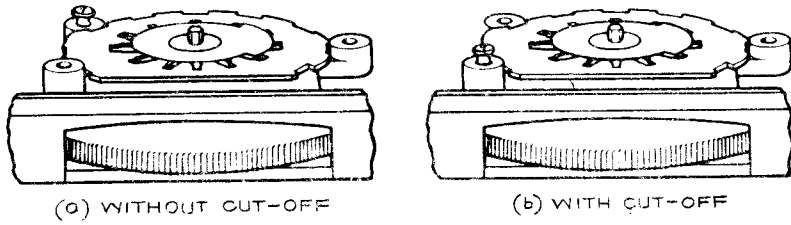
NOTE:—

A WHEN AN EXTENSION BELL IS REQUIRED, IT SHOULD BE CONNECTED TO TERMINALS 3 AND 5 OF THE LINE JACK UNIT.

© BRITISH TELECOMMUNICATIONS 1982

BRITISH TELECOMMS HQRS			
PAPER:- W	ISSUE		
DISTRIBUTION:- GENERAL		PD 1.1.3	5-1-82

FIG. 3



TONE RINGERS No. 5A, 5B & 8A

NOTES :-

- 1 AS ISSUED THE RINGERS ARE WITHOUT THE CUT-OFF FACILITY
- 2 TO PROVIDE THE CUT-OFF FACILITY :-
 REMOVE TELEPHONE COVER
 REMOVE STOP SCREW SHOWN IN (a)
 REPLACE STOP SCREW AS SHOWN IN (b)
 REPLACE TELEPHONE COVER

FIG. 2 2-WIRE PBX. EXTENSIONS, WITH RECALL

USING:-
 TELEPHONE No. 8722G
 SWITCH No. 13A-2 (SA)

