

# C.B. & AUTOMATIC SYSTEMS

SUBSCRIBER'S EXTENSION PLAN 10 (INTERNAL ONLY) ON P.M.B.X.'S WITH  
"C" WIRE SIGNALLING USING TELEPHONE No. 710...

N 4653

4 PANELS - I

CIRCULATION  
C.B. & AUTO

Suffix

Amendt

PAPER  
W

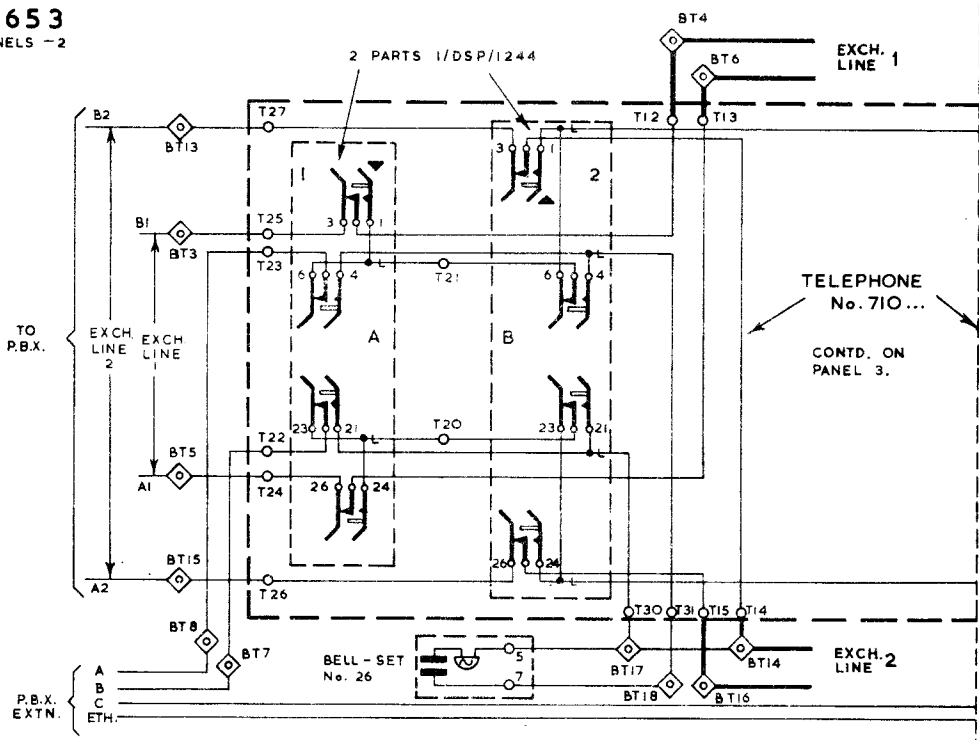
## NOTES :-

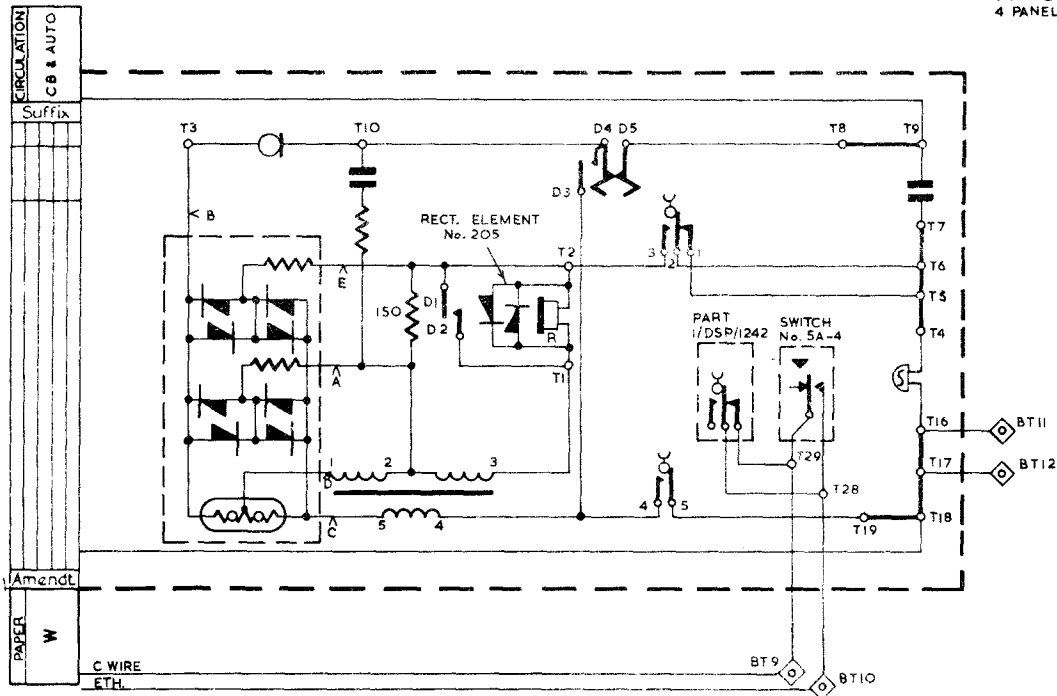
1. THE FACILITIES OF PLAN 10 ARE GIVEN ON DGM. N1433.
2. APPARATUS REQUIRED :-
 

TELEPHONE No. 710...	2 PARTS 1/DSP/1244
SWITCH No. 5A-4	2 PARTS 1/DST/836
BELL-SET No. 26	PART 5/DBU/260
BLOCK TERMINAL No. 37A	PART 6/DBU/260
CORD, INSTRUMENT No. 18/O4AJ...	PART 8/DBU/260
RECTIFIER-ELEMENT No. 205	PART 1/DSP/1242
3. REARRANGE STRAPS ON TELEPHONE AND BLOCK TERMINAL AS INDICATED & FIT PARTS 1/DSP/1242 & 1/DST/836.
4. FIT PART 1/DSP/1244 WITH PART 5/DBU/260 IN POSITION A.  
FIT PART 1/DSP/1244 WITH PART 6/DBU/260 IN POSITION B.  
FIT SWITCH No. 5A-4 WITH PART 8/DBU/260 IN POSITION D.  
ADJUST LATCHES A & B TO SETTING 1, AND LATCH D TO SETTING 3.  
LATCHES X & Y SHOULD BE ADJUSTED TO SETTING 4. (SEE DGM. N848).  
FIT RECTIFIER-ELEMENT No. 205 ACROSS RECEIVER INSET TERML. IN THE CAVITY OF THE HANDSET.
5. EXTENSION BELL IF REQUIRED: REMOVE STRAP T16-17 AND WIRE FROM BT. 11 & 12.
6. THE BLU AND THE OR CONDUCTORS OF THE CORD INST. ARE SPARE AND THEY SHOULD BE CUT BACK AT BOTH ENDS.

N4653

4 PANELS - 2





# N 4653

4 PANELS - 4

