

CB & AUTOMATIC SYSTEMS
SUBSCRIBERS EXTENSION PLAN 12A ON 2-WIRE PB.Xs. WITH RECALL
USING TELEPHONES No. 710... (INTERNAL ONLY)

N4554
4 PANELS-1

NOTES :-

1. THE FACILITIES OF PLAN 12A ARE SHOWN ON DGM. N1438

2. APPARATUS REQUIRED :-

MAIN : TELEPHONE No. 710...

PART 1/DSP/1243
 3 SWITCHES No. 5A-4
 BELL No. 56A
 PART 1/DST/836
 PART 3/DBU/262
 PART 3/DBU/260
 PART 8/DBU/260
 PART 13/DBU/260
 BLOCK TERMINAL No. 31A
 CORD, INSTRUMENT No. 12/15 AD...
 RECTIFIER-ELEMENT No. 205

EXTENSION : TELEPHONE No. 710...

2 SWITCHES No. 5A-4
 BELL No. 56A
 PART 1/DST/836
 PART 4/DBU/260
 PART 8/DBU/260
 3 CELLS, DRY, R40
 BLOCK, TERMINAL No. 31A
 CORD, INSTRUMENT No. 9/21 AD...
 RECTIFIER-ELEMENT No. 205

3. REARRANGE STRAPS ON TELEPHONES AND BLOCKS, TERMINAL AS SHOWN, AND FIT PARTS 1/DST/836. RECTIFIER-ELEMENTS No. 205 TO BE CONNECTED ACROSS RECEIVER INSET IN HANDSETS.

4. AT MAIN, FIT PART 1/DSP/1243 WITH PART 13/DBU/260 IN POSITION B. FIT SWITCHES No. 5A-4 IN POSITION A, C & D WITH PART 3/DBU/262 IN POSITION A, PART 3/DBU/260 IN POSITION C, AND PART 8/DBU/260 IN POSITION D. ADJUST LATCHES A & D TO POSITION 3, B TO POSITION 1, & C TO POSITION 2. X & Y LATCHES SHOULD BE AT SETTING 4 (SEE DGM. N848 PNL.4).

5. AT EXTENSION FIT SWITCH No. 5A-4 WITH PART 4/DBU/260 IN POSITION A AND SWITCH No. 5A-4 WITH PART 8/DBU/260 IN POSITION D. ADJUST LATCHES ON 'A' & 'D' TO POSITION 2.

6. BELL 56A COILS SHOULD BE CONNECTED IN PARALLEL.

7. FIT APPROPRIATE CORDS TO TELES. AT MAIN THE GRN-OR & GRN-BLU ARE NOT REQUIRED AND THESE SPARE CONDUCTORS SHOULD BE CUT BACK AT BOTH ENDS.

8. **EXTENSION BELL :** AT MAIN, DISCONNECT STRAP AND CONNECT BETWEEN BT 7-9. AT EXTENSION, REMOVE STRAPS T16-17 IN TELEPHONE AND CONNECT TO BT 6 & BT 12.

9. STRAP T8 & T9 OF TELE. FOR 'EARTH LOOP' RECALL. OMIT STRAP FOR 'ONE LINE EARTH DISCONNECTION' RECALL.

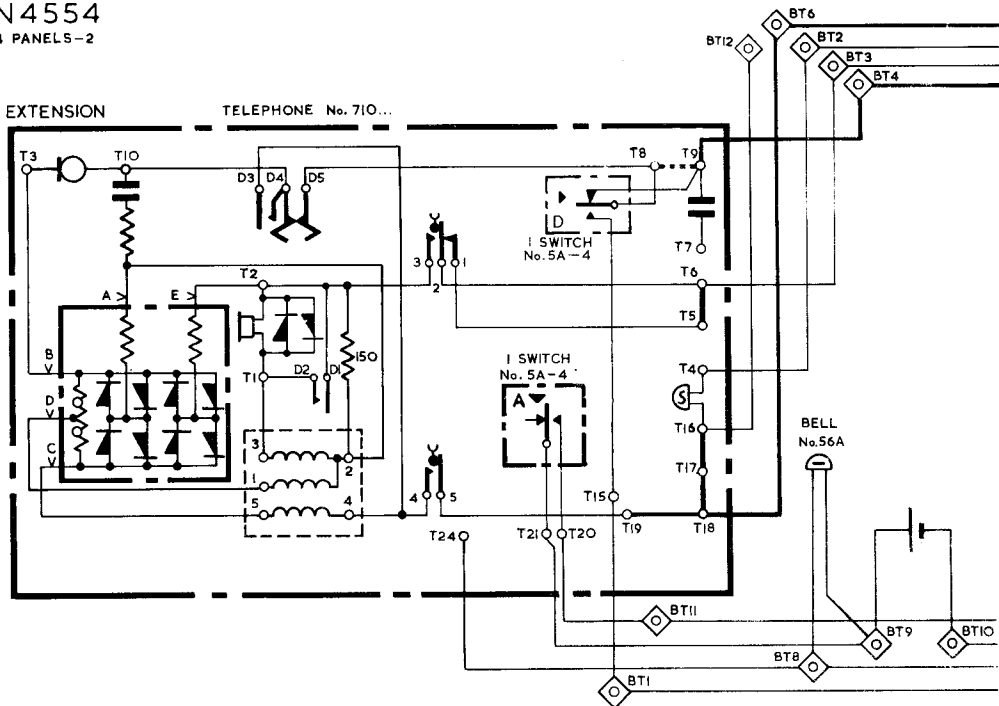
CIRCULATION	CB & AUTO
SUFFIX	
AMENDT.	
PAPER	W

N4554

4 PANELS-2

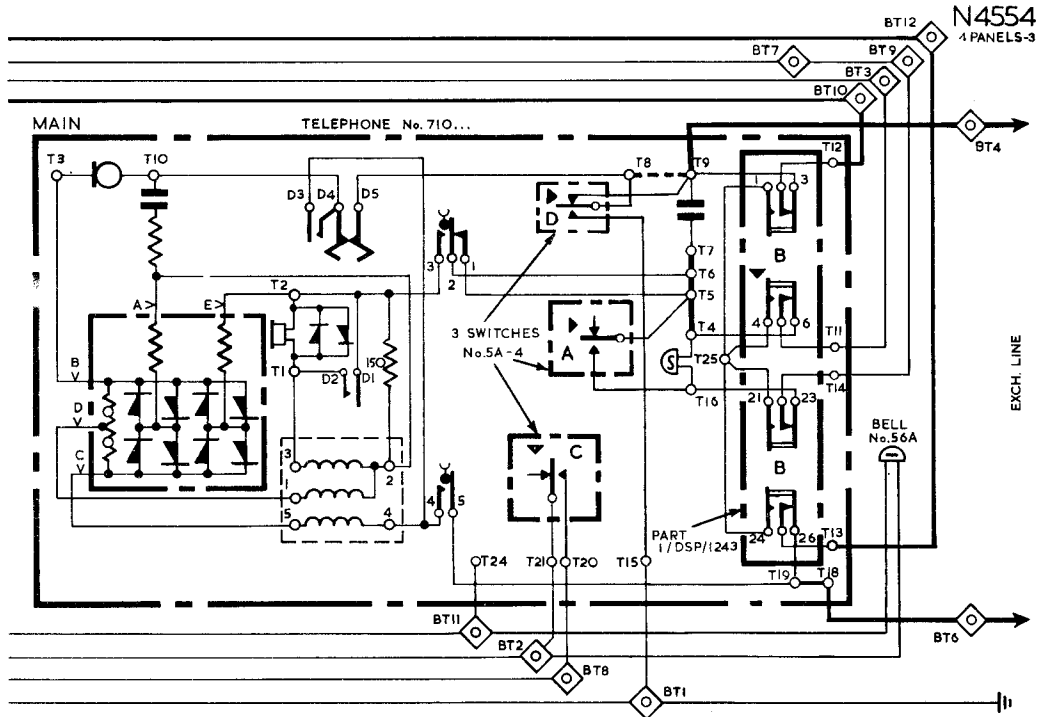
EXTENSION

TELEPHONE No. 710...



CB & AUTO

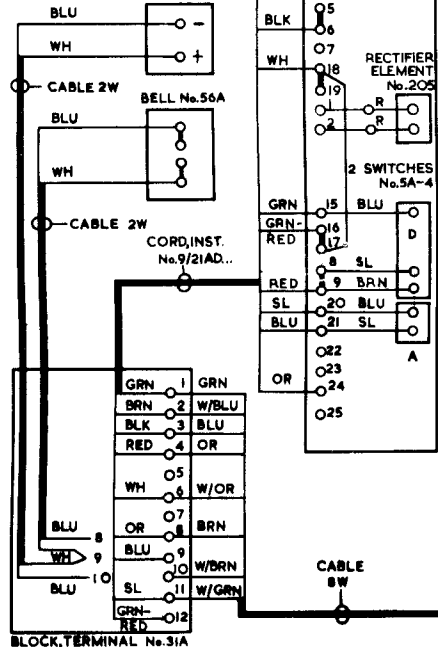
W



N4554 EXTENSION

4 PANELS-4

CELLS, DRY R40



MAIN

TELEPHONE No. 710

