

# C.B. & AUTOMATIC SYSTEMS

SUBSCRIBERS EXTENSION PLAN 1B (INTERNAL ONLY)  
 ON STANDARD PABX's AND PMBX's  
 WITH ENQUIRY, TRANSFER, AND OPERATOR RECALL FACILITIES  
 USING TELEPHONE No.706...

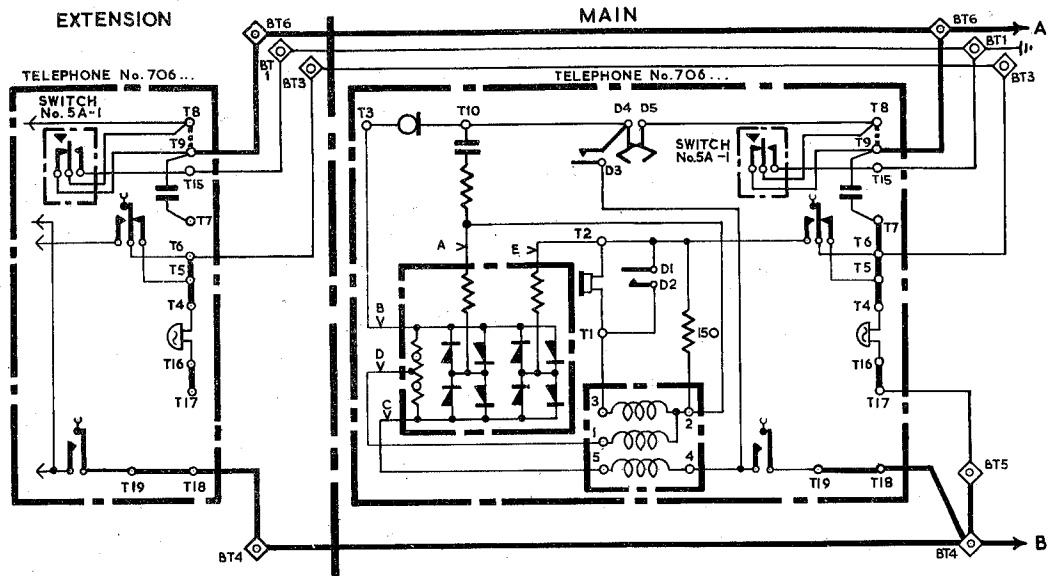
N4543

3 PANELS - I  
 22-5-59

14.1.63. C  
 27-4-60 B  
 15-2-60 A

NOTE 1 AMENDED TO SHOW SUPERSESSION.  
 ALL PANELS MADE YELLOW.  
 MINOR CORRECTIONS  
 SWITCH No. 5A-1 RE-POSITIONED

Y



N4543

3 PANELS-2

### NOTES

1. THE FACILITIES OF PLAN 1B ARE SHOWN ON DGM. N1436  
PLAN 1A SHOULD BE PROVIDED FOR NEW WORK
2. A TELEPHONE No. 706... , SWITCH No. 5A-1 AND LABEL No. 358D...  
ARE REQUIRED AT MAIN AND EACH EXTENSION INSTRUMENT.
3. RECOVER CORD INST. No. 3/10BAA.. FROM TELEPHONES No. 706...  
FIT CORD INST No. 5/37AA.. AT MAIN AND CORD INST. No. 4/83AA.. AT  
ALL EXTENSIONS
4. REARRANGE STRAPS ON BLOCK TERMINAL No. 30 AND TELEPHONE No. 706...  
AS SHOWN
5. WHEN AN EXTENSION BELL IS REQUIRED CONNECT IN PLACE OF  
STRAP BT4-BT5 AT MAIN.
6. THE EXCHANGE LINE AND EARTH MAY BE CONNECTED TO THE  
BLOCK TERMINAL AT EXTENSION IF MORE CONVENIENT.
7. REMOVE STRAP T8 - T9 ON TELEPHONE No. 706... ON PMBX EXTENSION ONLY

# C.B. & AUTOMATIC SYSTEMS

SUBSCRIBERS EXTENSION PLAN 1B (INTERNAL ONLY)  
ON STANDARD PABX'S AND PMBX'S  
WITH ENQUIRY, TRANSFER, AND OPERATOR RECALL FACILITIES.  
USING TELEPHONE No.706...

N4543  
3 PANELS - 3  
22-5-59

C.B. & AUTO.

14.1.63, C  
27.4.66 B  
15.2.60 A

NOTE 1 AMENDED TO SHOW SUPERSESSION.  
ALL PANELS MADE YELLOW  
MINOR CORRECTIONS  
SWITCH No. 5A-1 RE-POSITIONED

Y

## WIRING

