

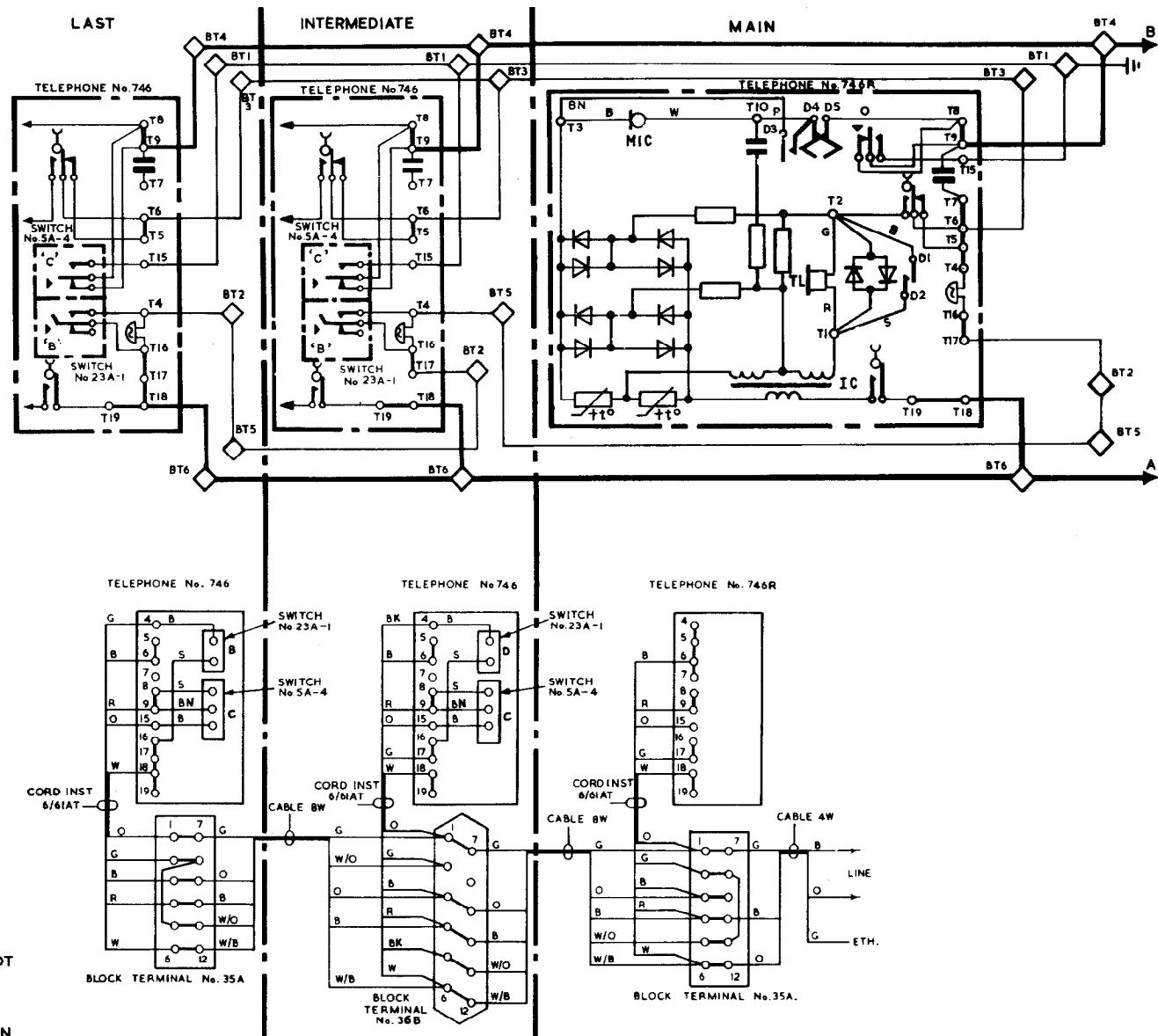
AUTOMATIC SYSTEM

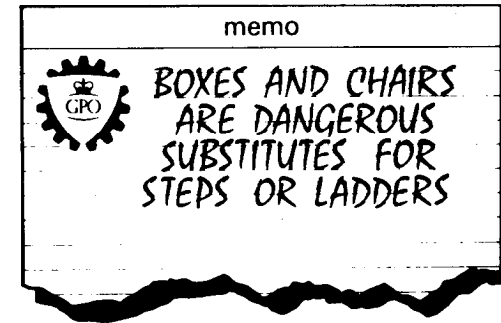
EXTENSION PLAN 1A ON 2-WIRE P.B.X.'S WITH
RECALL USING TELEPHONES No. 746... & No 746R

N4542
PAGE 1-2
ISSUE E

NOTES:-

1. THE FACILITIES OF PLAN 1A ARE SHOWN ON DGM. N1425.
2. THIS DGM. MAY ALSO BE USED FOR MAINTENANCE OF EXISTING PLAN 1C INSTALLATIONS WHICH ARE SIMILAR, BUT HAVE NO BELL CUT-OFF SWITCH FITTED AT EXTNS.
3. APPARATUS REQUIRED:- (NOTE II)
 - MAIN: TELEPHONE No. 746R
CORD INST No. 6/61AT
BLOCK TERMINAL No. 35A
 - EXTN: TELEPHONE No. 746
SWITCH No. 5A-4
SWITCH No. 23A-1
PART 7/DBU/363
PART 2/DBU/363
2 PARTS 1/DPL/1022
2 PARTS 1/DPI/203
CORD INST No. 6/61AT
BLOCK TERMINAL No. 36B (INTER)
BLOCK TERMINAL No. 35A (LAST)
4. REPLACE CORDS INST & TERMINAL BLOCKS WITH APPROPRIATE ITEMS.
5. REARRANGE OR FIT STRAPS ON BLOCKS, TERM. AND TELES., AS SHOWN.
6. EXTNS:-
FIT SWITCH No. 5A-4 AND PART 7/DBU/363 IN POSITION 'C' AND SWITCH No. 23A-1 AND PART 2/DBU/363 IN POSITION 'B'
7. WHEN AN EXTENSION BELL IS REQUIRED, CONNECT IN PLACE OF STRAP BT2-5 AT MAIN OR LAST EXTENSION.
8. THE EXCHANGE LINE AND EARTH MAY BE CONNECTED TO THE BLOCK TERMINAL AT EXTENSION IF MORE CONVENIENT.
9. WITH EXTERNAL EXTENSIONS, AN EARTH SHOULD BE PROVIDED LOCALLY SO THAT ONLY 4 WIRES WILL BE REQUIRED BETWEEN EXTENSIONS.
- 10 THE TOTAL NUMBER OF BELLS MUST NOT EXCEED SIX OR TWO ON LINES IN U.A.X. AREAS WITH VIBRATOR RINGING.
11. SEE DGM. N4700 FOR ADD-ON ITEMS WHEN ALTERNATIVE TELEPHONES ARE USED.





			P.O.E.D. S. B.C.H.
ISSUES	F	NOTES REVISED TELES CHANGED NOTE 11 ADDED <i>ml</i>	17-1-74
	D	REVISED FORM TITLE AMENDED NOTE 11 ADDED <i>ml</i>	27-10-65
	C	PLAN IC DELETED BT'S WERE No 30. SW SA-4 WERE PARTS (DSP) 245 K.M.A.	24-7-63
	B	REDRAWN TELE No. 710 ADDED. MADE 6 PANELS (OLD FORMAT) K.M.A.	21-3-61
	A	SWITCH No. SA-1 REPOSITIONED K.M.A.	16-3-60
	-	J.H.C.	22-5-59
			PAPER: W CIRCULATION: CB & AUTO