

CIRCULATION	C. B. & AUTO.
	Suffix
Amendt	
PAPER	W

# AUTOMATIC SYSTEM

SHARED SERVICE SEPARATE METERING  
EXTENSION PLAN I (INTERNAL ONLY)

ON INTERNAL EXTENSION OF PLANS 105, 105A, 107 AND 107A

**N 4537**

4 PANELS-1  
1-5-63

## NOTES:—

- THIS DIAGRAM SHOULD BE USED IN CONJUNCTION WITH DGM. N 4527 OR N 4529.
- INTERNAL EXTENSION PLANS 107 AND 107A  
APPARATUS REQUIRED FOR EXTENSION PLAN I
 

TELEPHONE No. 710...	PART 2/DBU/260 (EXCH)
BUZZER No. 32A-1	PART 4/DBU/260 (MAIN)
3 SWITCHES No. 5A-4	PART 3/DBU/260 (EXTN)
CORD INSTRUMENT No. 9/21AD...	PART 1/DBU/260
	PART 1/DST/836
BLOCK TERMINAL No. 35A	
- REARRANGE STRAPS ON TELEPHONE No. 710. FIT SWITCHES No. 5A-4 INTO POSITIONS A, B & D. FIT PART 4/DBU/260, 3/DBU/260 AND 2/DBU/260 INTO POSITIONS A, B & D RESPECTIVELY. LATCHES A, B & D SHOULD BE AT SETTING 3 AND LATCHES X AND Y AT SETTING 5 (SEE DGM. N848). FIT BUZZER No. 32A-1 ON TOP OF RIGHT HAND BELL GONG USING THE EXISTING FIXING SCREW. FIT CORD INST. No. 9/21AD AND BLOCK TERMINAL No. 35A. CONNECT AS EXTENSION OF PLAN 107 AS SHOWN ON PANEL 4. THE TELEPHONE MADE SPARE, WITH STRAPS AND CORD TERMINATIONS REARRANGED, IS CONNECTED AS EXTENSION PLAN I.
- BT1 AT MAIN SHOULD BE EXTENDED TO BT7 AT THE PLAN 107 EXTENSION BY THE BRN CONDUCTOR OF THE 8W CABLE. IF AN EXISTING INSTALLATION WITH 6W CABLE BETWEEN MAIN AND EXTENSION, A CABLE 2W SHOULD BE INSTALLED FOR THIS PURPOSE.
- AN EXTENSION BELL MAY BE CONNECTED IN PLACE OF STRAP BT2-BT8 AT THE PLAN 107 EXTENSION.
- INTERNAL EXTENSION PLANS 105 AND 105A  
APPARATUS REQUIRED FOR EXTENSION PLAN I
 

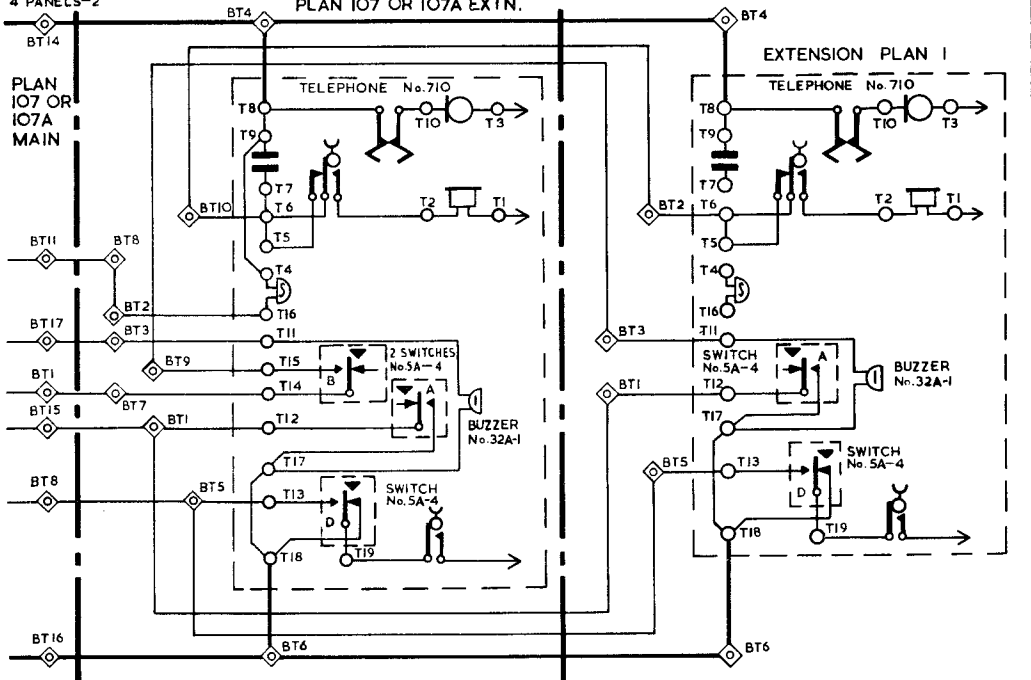
TELEPHONE No. 710...	PART 2/DBU/260 (EXCH)
BUZZER No. 32A-1	PART 4/DBU/260 (MAIN)
4 SWITCHES No. 5A-4	PART 3/DBU/260 (EXTN)
CORD INSTRUMENT No. 12/15AD...	PART 1/DBU/260
BLOCK TERMINAL No. 36A	
- REARRANGE STRAPS ON TELEPHONE No. 710. FIT SWITCHES No. 5A-4 INTO POSITIONS A, B, C & D. FIT PART 4/DBU/260, 3/DBU/260 AND 2/DBU/260 INTO POSITIONS A, B, C & D RESPECTIVELY. LATCHES A, B, C, & D SHOULD BE AT SETTING 3 AND LATCHES X AND Y AT SETTING 5 (SEE DGM. N848). FIT BUZZER No. 32A-1 ON TOP OF RIGHT HAND BELL GONG USING THE EXISTING FIXING SCREW. FIT CORD INST. No. 12/15AD AND BLOCK TERMINAL No. 36A, SPARE CONDUCTORS OF CORDS INSTRUMENT SHOULD BE TERMINATED ON SPARE TERMINALS. CONNECT AS EXTENSION 1 OF PLAN 105. THE TELEPHONE MADE SPARE, WITH STRAPS AND CORD TERMINATIONS REARRANGED, IS CONNECTED AS EXTENSION PLAN I. THIS DIAGRAM SHOWS EXTENSION PLAN I CONNECTED TO EXTENSION 1 OF PLAN 105. IF THE EXTENSION PLAN I IS REQUIRED TO BE CONNECTED TO EXTENSION 2 OF PLAN 105, THE CONNEXIONS OF THE GRN AND BRN WIRES OF THE 8W CABLE FROM THE MAIN ARE REVERSED AT THE BLOCK TERMINAL No. 36A.
- AN EXTENSION BELL MAY BE CONNECTED IN PLACE OF STRAP BT2-BT5 AT THE PLAN 105 EXTENSION.

N4537

4 PANELS-2

# EXTENSION PLAN I ON EXTENSION OF PLANS 107 AND 107A

PLAN 107 OR 107A EXTN.



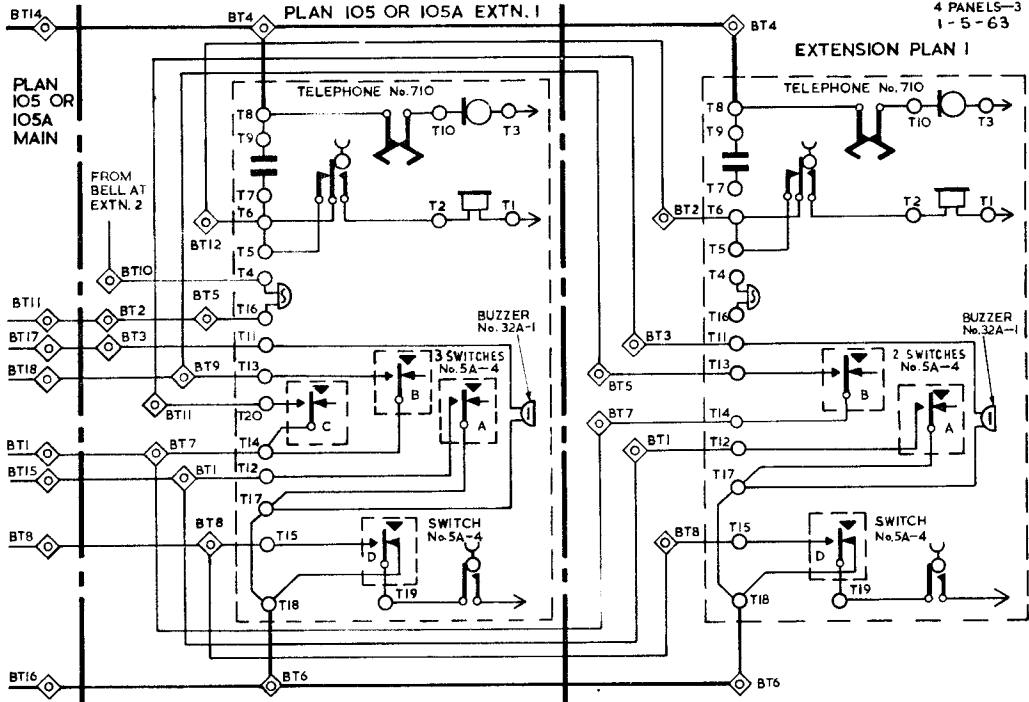
# EXTENSION PLAN I ON EXTENSION OF PLANS 105 AND 105A

N4537  
4 PANELS-3  
1-5-63

CIRCULATION  
C.B. & AUTO.

Amendt

PAPER  
W



# N 4537

4 PANELS-4

## WIRING

