

**AUTOMATIC SYSTEM
SHARED SERVICE (SEPARATE METERING)
EXTENSION PLANS 105 & 105A (INTERNAL ONLY)
USING PLANPHONE A**

**N4527
PAGE 1-4
ISSUE B**

NOTES:-

1. The facilities of Plans 105 & 105A are shown on Dgm. N1450.

2. APPARATUS REQUIRED:-

MAIN

Planphone A (Note 3)
Switch No. 5A-3
Part 3/DBU/263
Thermistor No. 1A-1
Part 2/DST/836
Part 1/DBR/366
Power-Unit No. 53B (Note 7)

EACH EXTENSION

Telephone No. 740...
3 Switches No. 5A-4
Buzzer No. 32C-3
Cord Instrument No. 9/21 AD (EXTN. 2)
Cord Instrument No. 12/15AD (EXTN 1)
Block Terminal No. 36B
Part 2/DBU/372
Part 4/DBU/372
EXTENSION 1:-plus Part 6/DBU/372
EXTENSION 2:-plus Part 5/DBU/372

3. MAIN

See Dgm. N628 for alternative apparatus when a Planphone A is either not suitable or not available.

4. In Planphone A fit Parts 2/DST/836 and 1/DBR/366. Remove strap between Terminals T18-T19, shift red conductor of multiway cord from T16 to T21, connect spare green-white conductor to Terminal T20. Fit Switch No. 5A-3, Part 3/DBU/263 and Thermistor No. 1A-1. Rearrange straps and connect as shown.

5. The diagram shows connexions for Plan 105. For Plan 105A strap Terminals 18 and 19 in Planphone A (a spare strap is located between Terminals 6 and 7) and shift blue-white conductor from 24 to 25.

6. Extension bell may be connected by removing strap from Planphone A Terminals 7-22 and connecting bell between BT7-B10.

7. The Power-unit No. 53B should be fitted in a position adjacent to a 3 pin main socket. 8 Cells, Dry R40 and 1 Box Battery No. 10 may be provided in lieu of Power Unit No. 53B if a suitable mains supply is not available. To prevent damage care must be taken to connect the 10V supply, positive to BT2, negative to BT1.

8. Conductor colours shown are of Cord, Inst. No. 18/09 AD. Colours shown in brackets refer to Cord, Inst. No. 18/02 AJ.

9. The connexion shown are for 'X' subscribers. Reverse the A & B wires for 'Y' subscribers.

10. In areas with vibrator ringing, a Valve Electronic CV8790 should be fitted between T16 and T21 in Planphone A.

EXTENSIONS

11. See Dgm. N4700 for add-on items when alternative telephones are used.

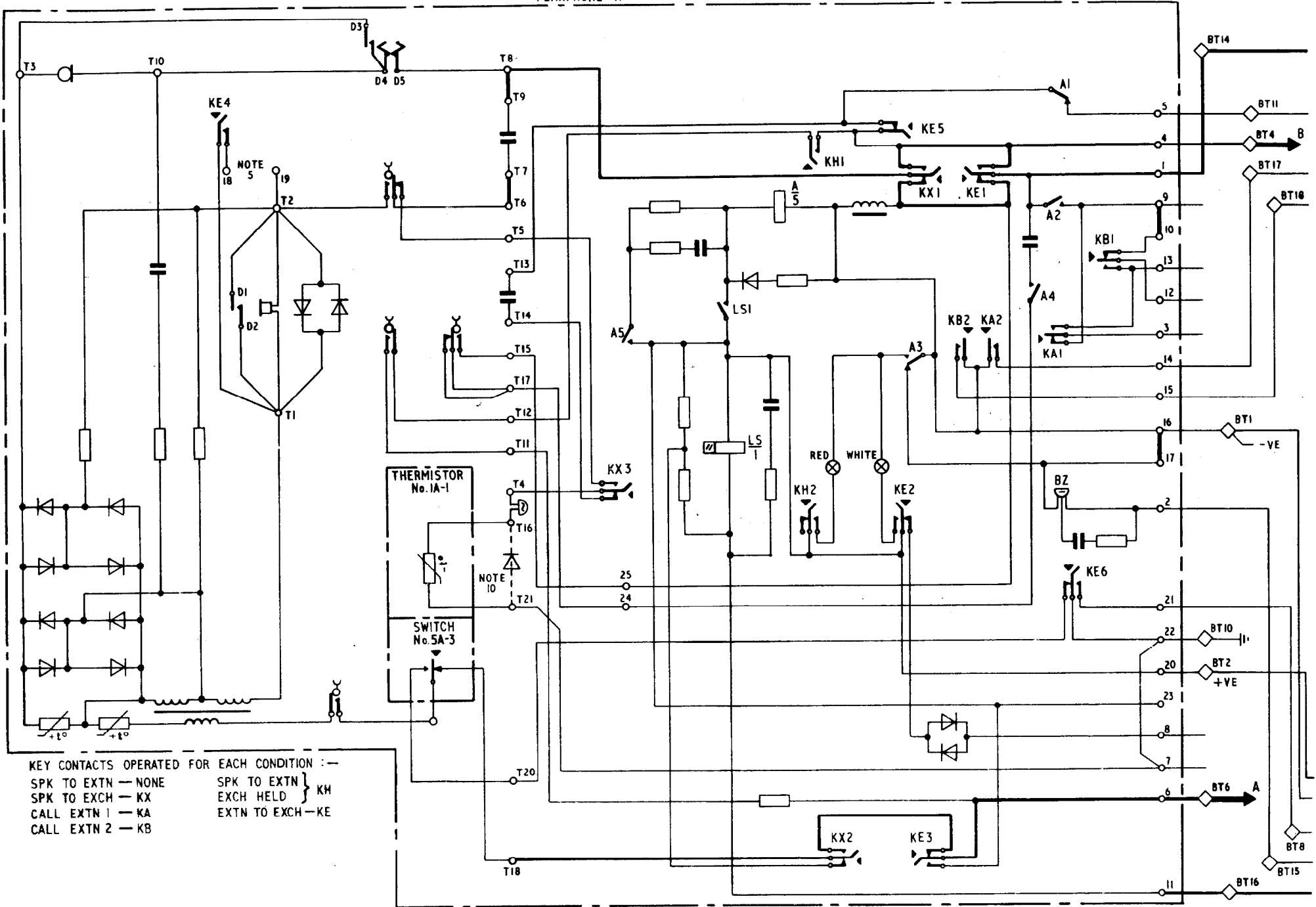
12. Fit Switches No. 5A-4 in position A, B & D. Fit Buzzer No. 32C-3, Cord, Inst. No. 9/21 AD OR 12/15AD and Block Terminal No. 36B. Adjust Latches A, B & D to setting 3, Latches X & Y to setting 5 (see Dgm. N848). At Extension 1 fit Parts 4, 6/ & 2/DBU/372 in positions A, B & D respectively. At Extension 2 similarly fit Parts 4, 5/ & 2/DBU/372 in positions A, B & D. Rearrange straps and connect as shown.

13. If Extension 2 is cabled directly from the main connect the spare slate/white wire to BT13 at the Main and BT10 at Extension 1. Connect white/brown wire from Extension 2 to BT13 at Main.

14. An extension bell may be connected in place of Strap BT2 and BT5.

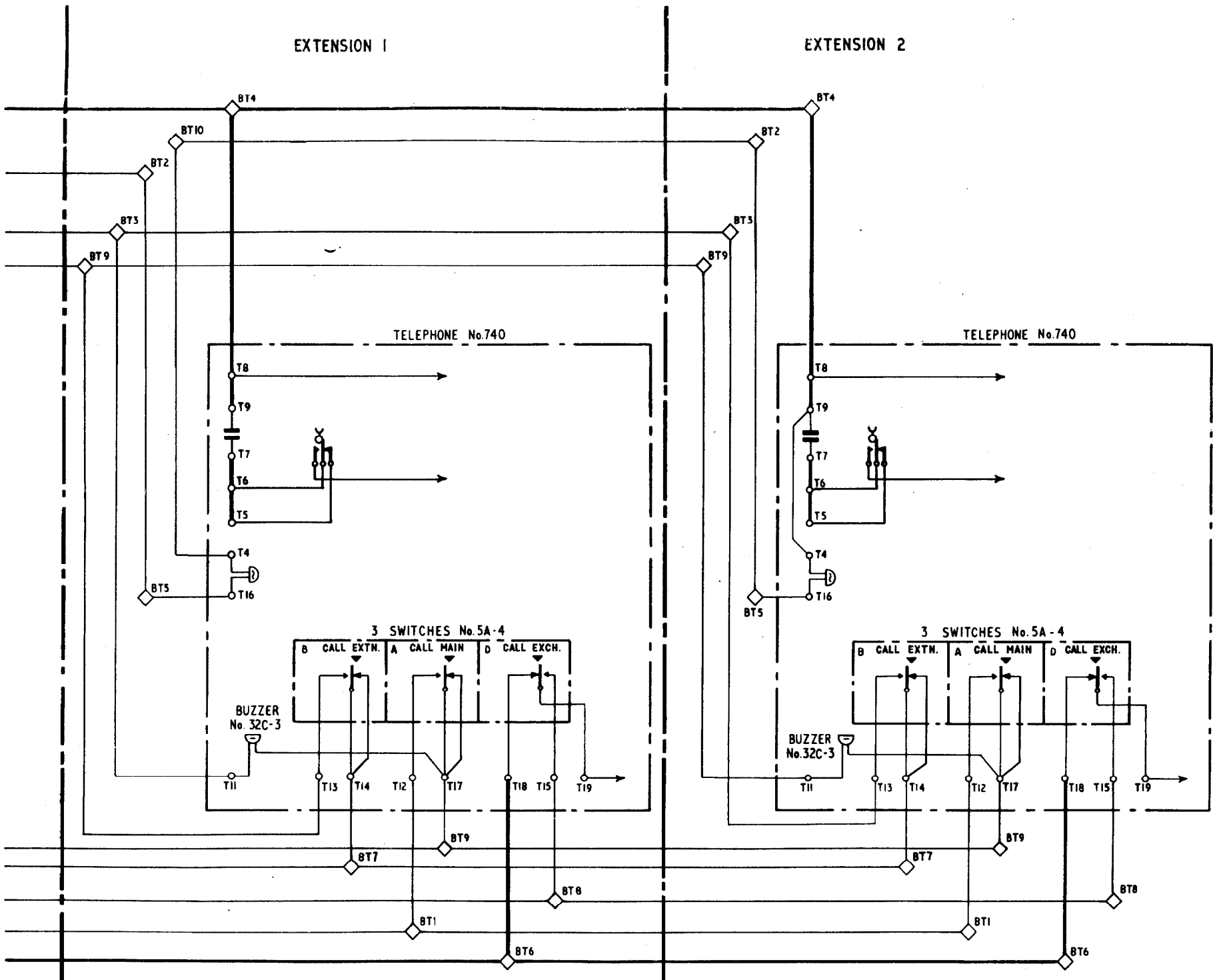
ECCOMMS :- W :- 8 AUTO	ISSUE		
	B	NOTES 2,7,12 & 13 AMENDED.	24.4.76
	A	NEW FORMAT. TELEPHONES CHANGED. NOTES REWRITTEN D.I.F. T07.1.1	25.2.75
		T TROKE	11.10.61

PLANPHONE A



EXTENSION 1

EXTENSION 2



WIRING

EXTENSION 1
TELEPHONE No.740

EXTENSION 2
TELEPHONE No.740

