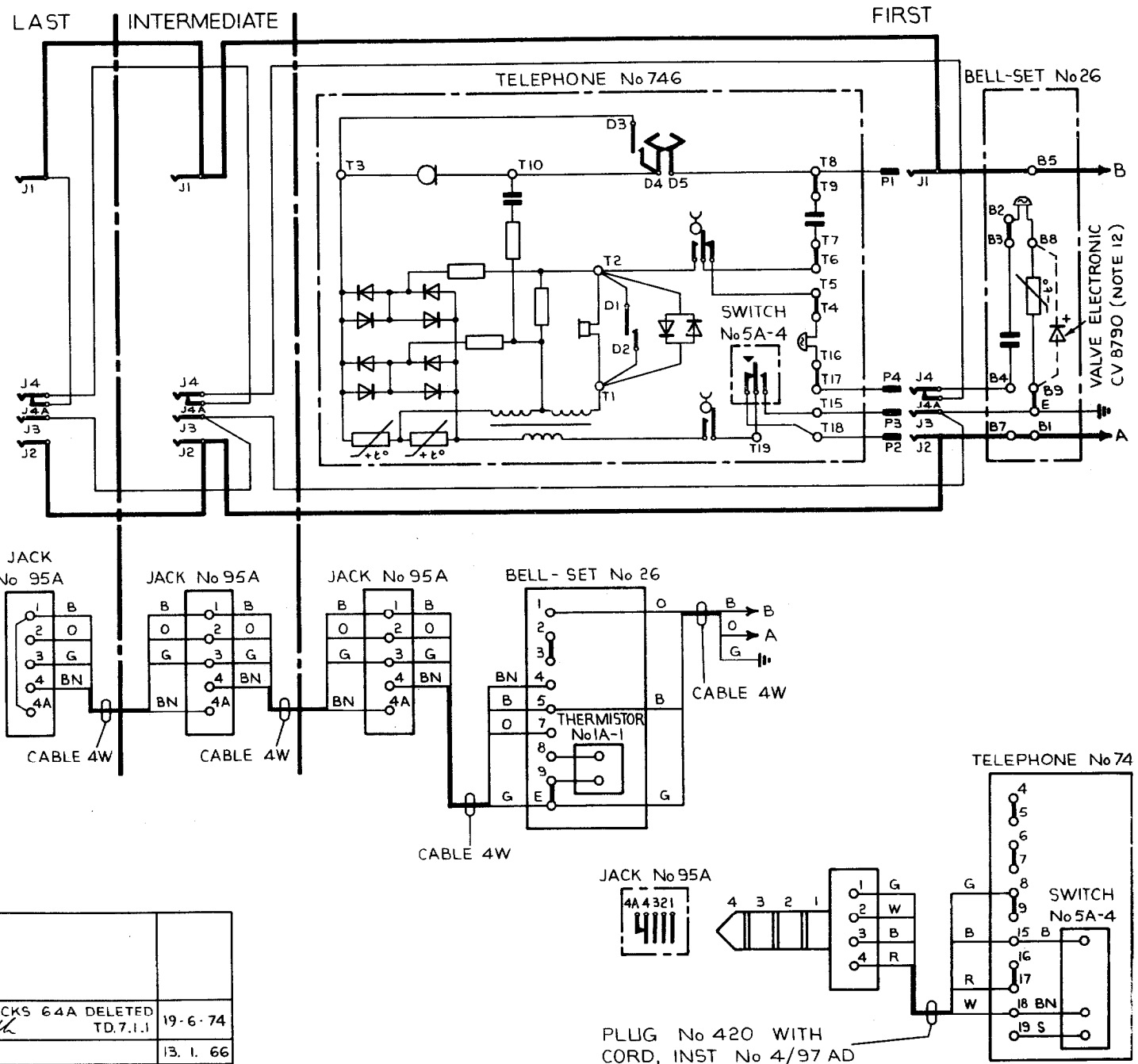


**AUTOMATIC SYSTEM
SHARED SERVICE (SEPARATE METERING)
EXTENSION PLAN 4 USING TELEPHONE No 746**

NOTES

- 1 THE FACILITIES OF PLAN 4 ARE SHOWN ON DGM N1427
- 2 APPARATUS REQUIRED:-
USING ONE TELEPHONE
BELL-SET No 26
THERMISTOR No 1A-1
TELEPHONE No 746
PART 1/DBU/362
SWITCH No 5A-4
PART 1/DPL/1022
2 PART 1/DPI/203
PLUG No 420--- WITH CORD, INST No 4/97AD---
JACK No 95A AT MAIN AND EACH EXTENSION
USING TWO OR MORE TELEPHONES
BELL-SET No 26
THERMISTOR No 1A-1
TELEPHONES No 746
PART 1/DBU/362
SWITCH No 5A-4
PART 1/DPL/1022
2 PART 1/DPI/203
PLUG No 505--- WITH CORD, INST No 5/39AD---
JACK No 96A AT MAIN AND EACH EXTENSION
- 3 SEE DGM N4760 FOR "ADD-ON" ITEMS WHEN ALTERNATIVE TELEPHONES ARE USED
- 4 IF AN EXTENSION BELL IS REQUIRED CONNECT IN PLACE OF STRAPS B2-B3 OF BELL-SET No 26
- 5 FIT THERMISTOR No 1A-1 BETWEEN B8 & B9 IN BELL-SET
- 6 THE EXCHANGE LINE & EARTH MAY BE CONNECTED TO JACK AT EXTENSIONS IF MORE CONVENIENT
- 7 THE CONNEXIONS SHOWN ARE FOR 'X' SUBSCRIBERS. FOR 'Y' SUBSCRIBERS REVERSE THE A & B WIRES
- USING ONE TELEPHONE No 746
- 8 RECOVER CORD, INST No 4/121 AT FROM TELEPHONE AND FIT SWITCH No 5A-4, PART 1/DBU/362, PLUG No 420--- WITH CORD, INST No 4/97AD---
- 9 CONNECT AS SHOWN IN FIG.1
- USING TWO OR MORE TELEPHONES No 746
- 10 RECOVER CORD, INST No 4/121 AT FROM TELEPHONE AND FIT SWITCH No 5A-4, PART 1/DBU/362, PLUG No 505--- WITH CORD, INST No 5/39AD---
- 11 CONNECT AS SHOWN IN FIG.2
- 12 IN UAX AREAS WITH VIBRATOR RINGING, A VALVE ELECTRONIC CV8790 SHOULD BE CONNECTED BETWEEN TERMINALS BB & B9 OF BELL-SET No 26 IN PARALLEL WITH THE THERMISTOR No 1A-1

FIG.1 USING ONE TELEPHONE No 746



| | | | |
|-------------------------------------|-------|---|---------------------|
| PO TELECOMMS HOURS | | | |
| PAPER :- W DISTN :- CB & AUTO | ISSUE | | |
| | D | TELEPHONES CHANGED, NOTES REWRITTEN, JACKS 64A DELETED <i>TK</i> | 19-6-74 TD.7.1.1 |
| | C | REVISED FORM | 13. 1. 66 |

PLUG No 420 WITH CORD, INST No 4/97 AD

FIG 2. USING TWO OR MORE TELEPHONES No 746... PLUGS No 505 & No 96A

