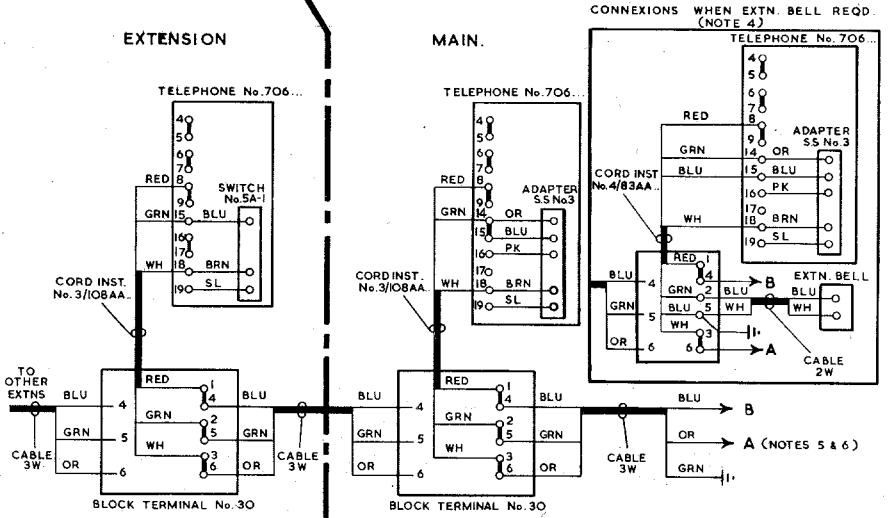
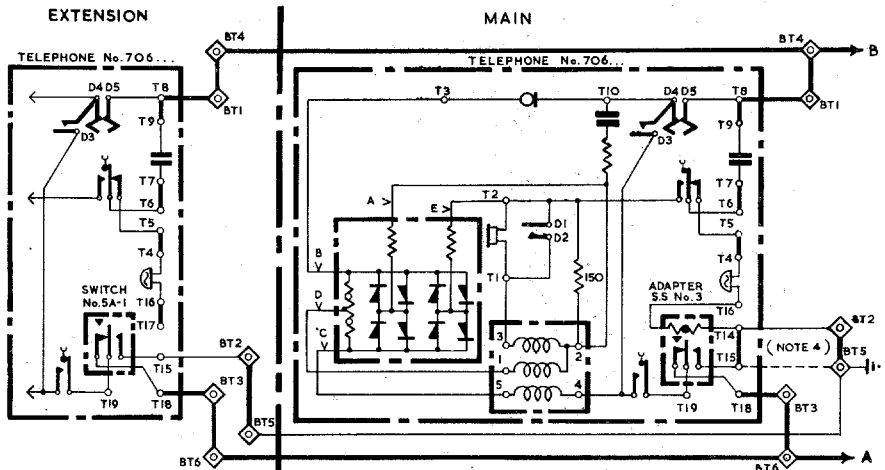


# AUTOMATIC SYSTEM

SHARED SERVICE (SEPARATE METERING)  
EXTENSION PLAN IB (INTERNAL ONLY)  
USING TELEPHONE No 706...

NOTES :-

1. THE FACILITIES OF PLAN IB ARE SHOWN ON DGM N1436. PLAN IA SHOULD BE PROVIDED FOR NEW WORK.
2. APPARATUS REQUIRED :-  
 MAIN :- TELEPHONE No.706...  
 SWITCH No. 5A-3  
 THERMISTOR IA-1  
 PART 3/DBU/263  
 EXTENSION:- TELEPHONE No.706...  
 SWITCH No.5A-3  
 PART 3/DBU/263
3. REARRANGE STRAPS ON BLOCK TERMINAL No.30 AND TELEPHONES No 706... AS SHOWN.
4. WHEN AN EXTENSION BELL IS REQUIRED RECOVER CORD INST. No 3/108AA... AND STRAP T14-T15 FROM TELEPHONE No 706... AT MAIN. FIT CORD INST No 4/83AA... REMOVE STRAP FROM BT2-BT5 AND CONNECT BELL USING CABLE 2W.
5. THE EXCHANGE LINE AND EARTH MAY BE CONNECTED TO BLOCK TERMINAL AT EXTENSION IF MORE CONVENIENT.
6. THE CONNEXIONS SHOWN ARE FOR 'X' SUBSCRIBERS. FOR 'Y' SUBSCRIBERS REVERSE THE 'A' AND 'B' WIRES.



ISSUES			P.O.E.D. S. B.CH.
	B	REVISED FORM. SUPERSESSON NOTE ADDED, NOTE 2. MINOR CORRECTIONS. TITLE AMENDED. <del>1/11/65</del>	19. 11. 65.
	A	NOTE 1 AMENDED. MADE YELLOW. K.M.A.	20-12-64
	-	J.H.C.	7-4-59

PAPER: Y  
CIRCULATION:  
CB & AUTO