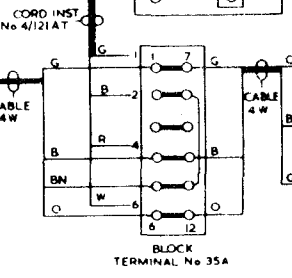
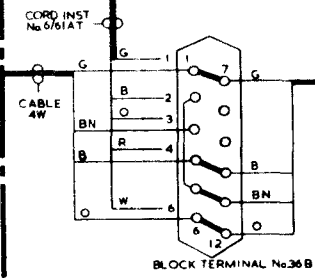
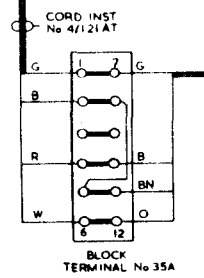
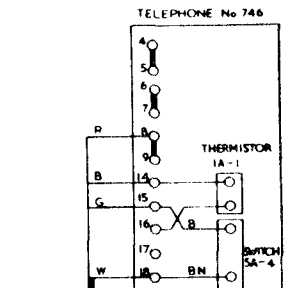
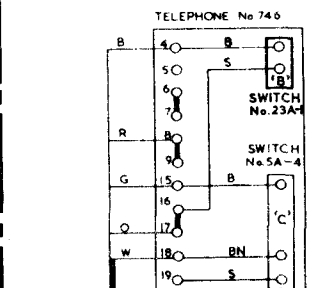
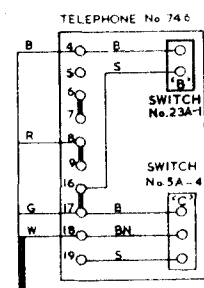
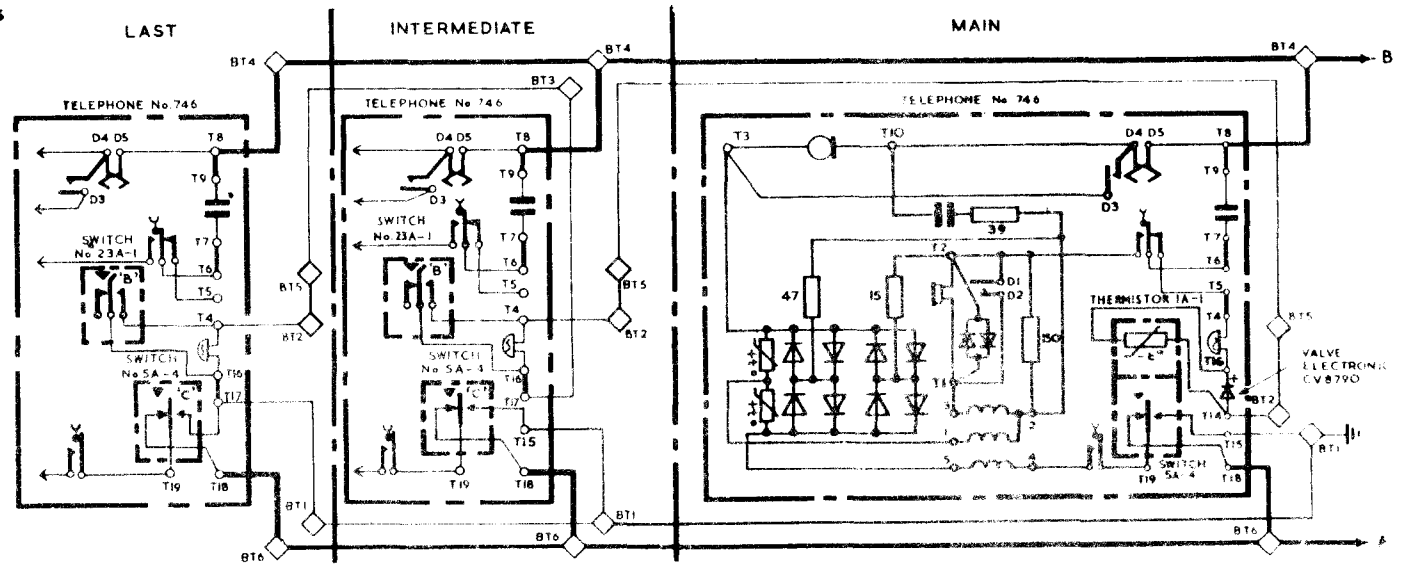


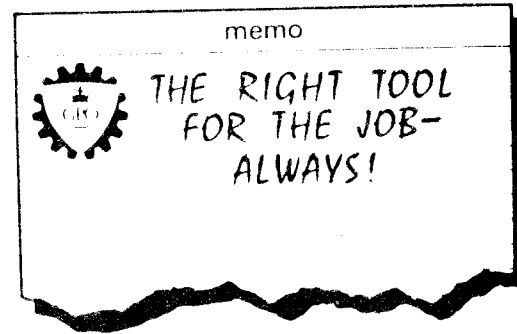
NOTES:-

- 1 The facilities of Plan 1A are shown on Dgm N1425
- 2 This diagram may also be used for maintenance of existing Plan 1C installations which are similar, but have no bell cut-off switch fitted at extns
- 3 **APPARATUS REQUIRED:-** (note 11)
 Main: Telephone No.746
 Switch No.5A-4
 Thermistor No.1A-1
 Part 1/DBU/362
 Part 1/DPL/1022
 2 Parts 1/DPI/203
 Block Terminal No.35A

 Extn: Telephone No.746
 Switch No.5A-4
 Switch No.23A-1
 Part 2/DBU/363
 Part 3/DBU/363
 Part 1/DPL/1022
 2 Parts 1/DPI/203
 Cord Inst No.6/61AT (INTER)
 Block Terminal No.36B (INTER)
 Block Terminal No.35A (LAST)
- 4 Fit Cord Inst 6/61AT and BT No.36B to intermediate. Terminal Blocks No.35A to main and last extension
- 5 Fit or rearrange strap straps on teles and terminal blocks as shown
- 6 Extns:-
 Fit Switch No.5A-4 and Part 3/DBU/363 in position 'C' and Switch No.23A-1 and Part 2/DBU/363. in position 'B'
- 7 When extn bell is required, connect in place of Strap BT 2-5 at main or extn, as reqd
- 8 The exch line and earth may be connected at the intermediate or last extn, if more convenient
- 9 The connexions shown are for 'X' subscribers. For 'Y' subscribers reverse the exch line 'A' and 'B' wires on BT4 and 6
- 10 In UAX areas with vibrator ringing, a Valve Electronic CV8790 should be connected between T14 & T16 at main tele
- 11 See Dgm N4700 for add-on items when alternative telephones are used



SEE NOTE 9



PO				
TELECOMMS				
HQRS				
PAPER: - W	ISSUE			
DISTRN:				
GENERAL				
	G	MINOR AMENDMENTS EMS		11-10-76
	F	NOTES REVISED TILES CHANGED	NOTE H ADDED	21 1-74
	E	REVISED YEAR TITLE AMENDED	MINOR EDITORIAL AMENDMENTS	25 10 65
	D	PLAN 10 DELETED SW 18 3 WERE PARTS /05P/045 BIC WERE NO 20	KVA	21 & 43
	C	PANELS RE-ARRANGED	KVA	21 & 41
	K	REDRAWN TELE TIO ADDED	WAVE & PANELS	1 7 60
	A	PLAN 1A ADDED	KVA	5 & 93
				12 3 59