

**AUTOMATIC SYSTEMS**  
**EXTENSION PLAN 1A (INTERNAL ONLY) ON INTERNAL**  
**OR EXTERNAL EXTENSIONS OF PLANS 105, 105A, 107 & 107A**

**N4518**  
**PAGE 1-4**  
**ISSUE B**

**NOTES:-**

1. This diagram should be used in conjunction with Diagrams N4507 or N4509.
2. See Dgm. N4700 for "Add-On" items when alternative telephones are used.
3. INTERNAL EXTENSION PLAN 107 OR 107A

**APPARATUS REQUIRED FOR EXTENSION PLAN 1A**

Telephone No. 746  
 Switch No. 23B-1  
 Switch No. 5A-4  
 Buzzer No. 32C-3  
 Parts 2 & 4/DBU/363  
 Cord Instrument No. 6/61 AT  
 Block Terminal No. 35A  
 Part 1/DPL/1022  
 2 Parts 1/DFI/203

4. At Position "B" in the Telephone No. 746, fit Switch No. 5A-4 and Part 4/DBU/363 (MAIN). At Position "C", fit Switch No. 23B-1 and Part 2/DBU/363 (ON/OFF). Fit Buzzer 32C-3, rearrange straps, fit Cord Instrument No. 6/61 AT and Block Terminal No. 35A. At existing Plan 107 or 107A internal extension remove strap BT2-BT5.
5. INTERNAL EXTENSION PLAN 105 OR 105A

**APPARATUS REQUIRED FOR EXTENSION PLAN 1A**

Telephone No. 740  
 Switch No. 23B-1  
 2 Switches No. 5A-4  
 Buzzer No. 32C-3  
 Parts 4 and 10/DBU/372  
 Cord Inst. No. 9/21 AD  
 Block Terminal No. 36B  
 4 Parts 1/DPI/203

and in addition:-

- At Plan 1A Extension of Extension 1 of Plan 105, a Part 6/DBU/372  
 At Plan 1A Extension of Extension 2 of Plan 105, a Part 5/DBU/372.
6. Fit Cord Inst. No. 9/21 AD, Block Terminal No. 36B and Buzzer No. 32C-3. Fit Switches No. 5A-4 in positions 'A' and 'B', Switch No. 23B-1 in position 'D'. Fit Parts 4 and 10/DBU/372 in positions 'A' and 'D' respectively. At Plan 1A Extension of Extension 1 of Plan 105, fit Part 6/DBU/372 in position B. Similarly at Plan 105 Extension 2, fit Part 5/DBU/372. Rearrange straps and connect as shown. Adjust latches 'A', 'B' and 'D' to setting 3, latches 'X' and 'Y' to setting 5 (see Dgm. N848).
7. EXTERNAL EXTENSION PLAN 107 OR 107A

**APPARATUS REQUIRED FOR EXTENSION PLAN 1A**

Telephone No. 746  
 Switch No. 5A-4  
 Switch No. 23A-1  
 Switch No. 19B-1  
 Parts 2 & 4/DBU/363  
 2 Block Terminals No. 35A  
 Part 1/DPL/1022  
 2 Parts 1/DPI/203

8. In Telephone No. 746, fit Switch No. 5A-4 and Part 4/DBU/363 (MAIN) in position "B", Switch No. 23A-1 and Part 2/DBU/363 (ON/OFF) in position "C". Recover Block Terminal No. 52A and provide Block Terminal No. 35A. Fit Switch No. 19B-1 and rearrange straps. At existing Plan 107 or 107A external extension, fit Block Terminal No. 35A and rearrange connexions.
9. EXTERNAL EXTENSION PLAN 105 OR 105A

Provide apparatus and fit as in Notes 7 and 8 but with a Thermistor No. 1A-1 connected in place of Strap T4-T5 at the Plan 105 extension.

PG TELECOMMS HORS PAPER:- W DISTN:- CB & AUTO	ISSUE				
		B	TELES CHANGED, NOTES REWRITTEN AND FIGS REARRANGED	DiF T07.1.1	5-2-75
		A	NEW FORMAT. MINOR AMENDMENTS. D.R.L		15.3.66

FIG. 1. EXTENSION PLAN IA ON INTERNAL  
EXTENSION OF PLANS 107 & 107A

PLAN 107 OR 107A

PLAN IA EXTENSION

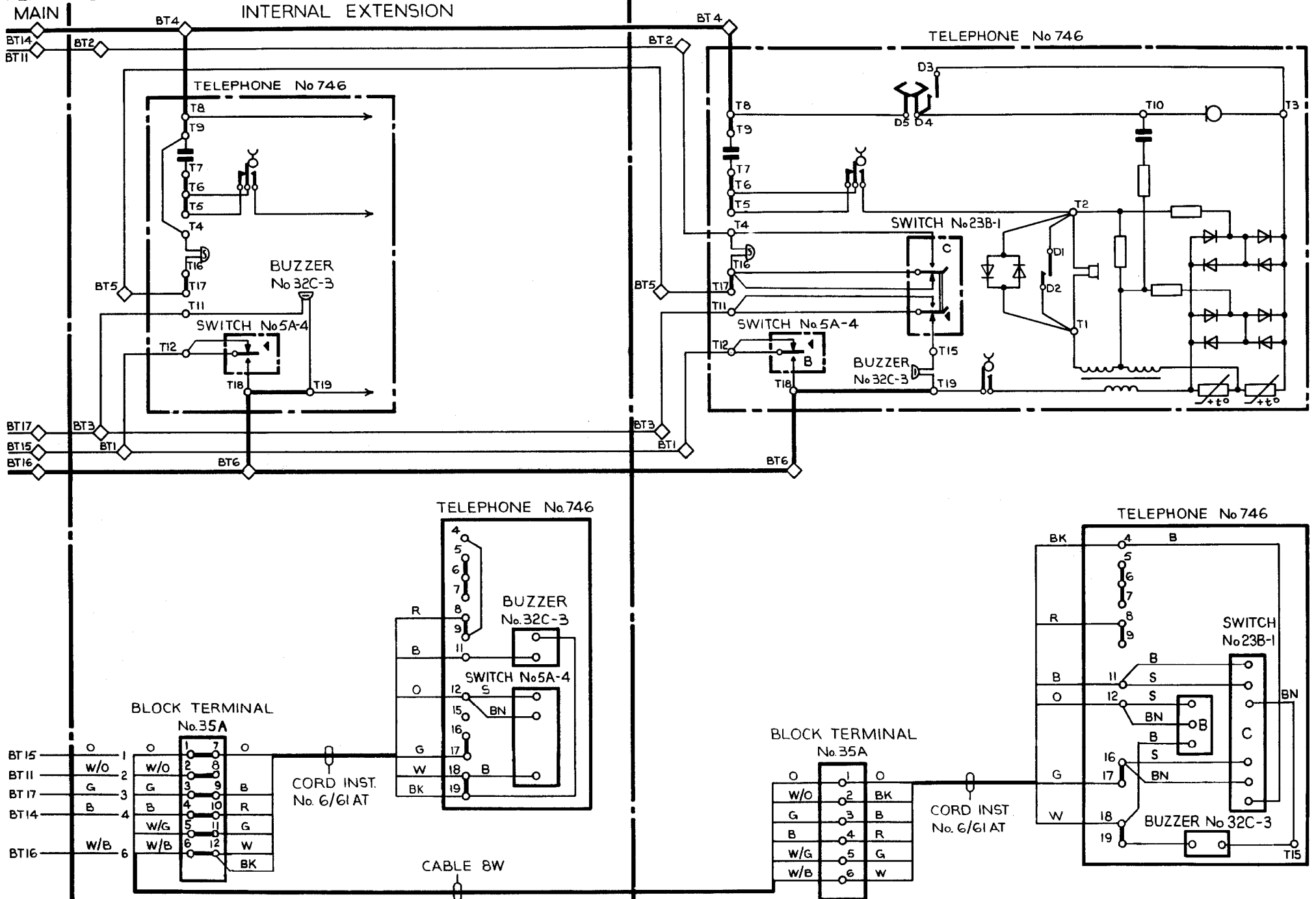


FIG 2 EXTENSION PLAN 1A ON INTERNAL  
EXTENSION OF PLANS 105 & 105A

PLAN 105 & 105A

INTERNAL EXTENSION I

PLAN 1A EXTENSION

TELEPHONE No 740

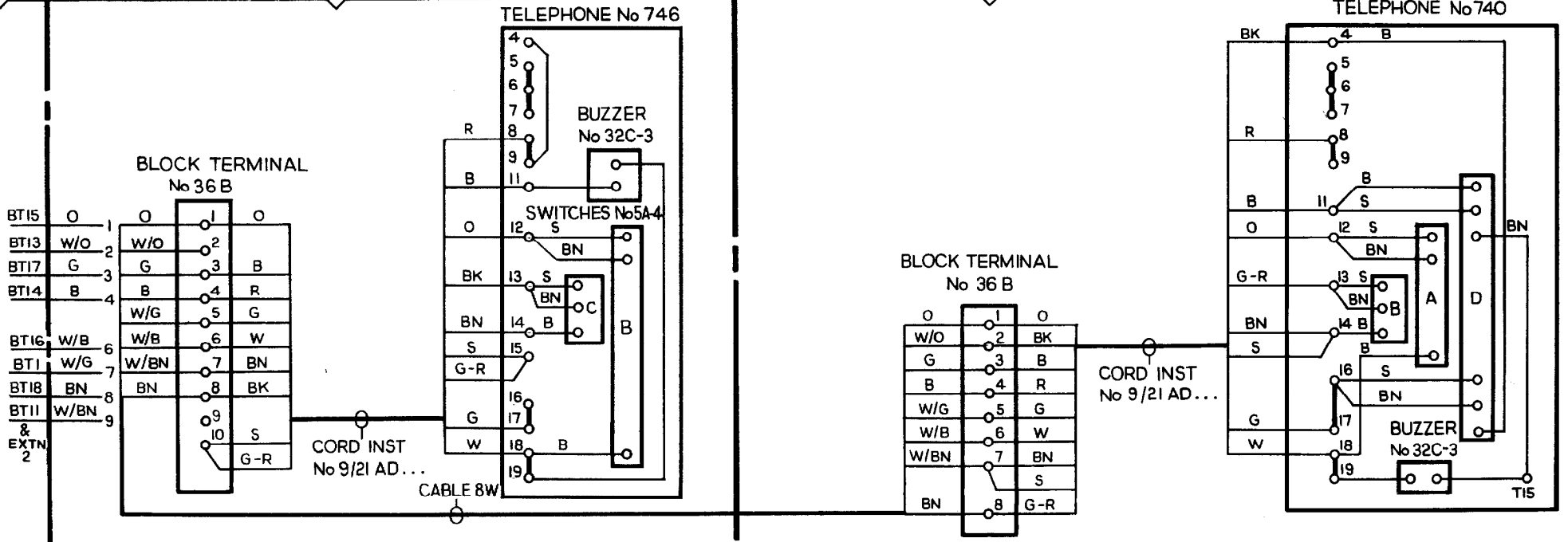
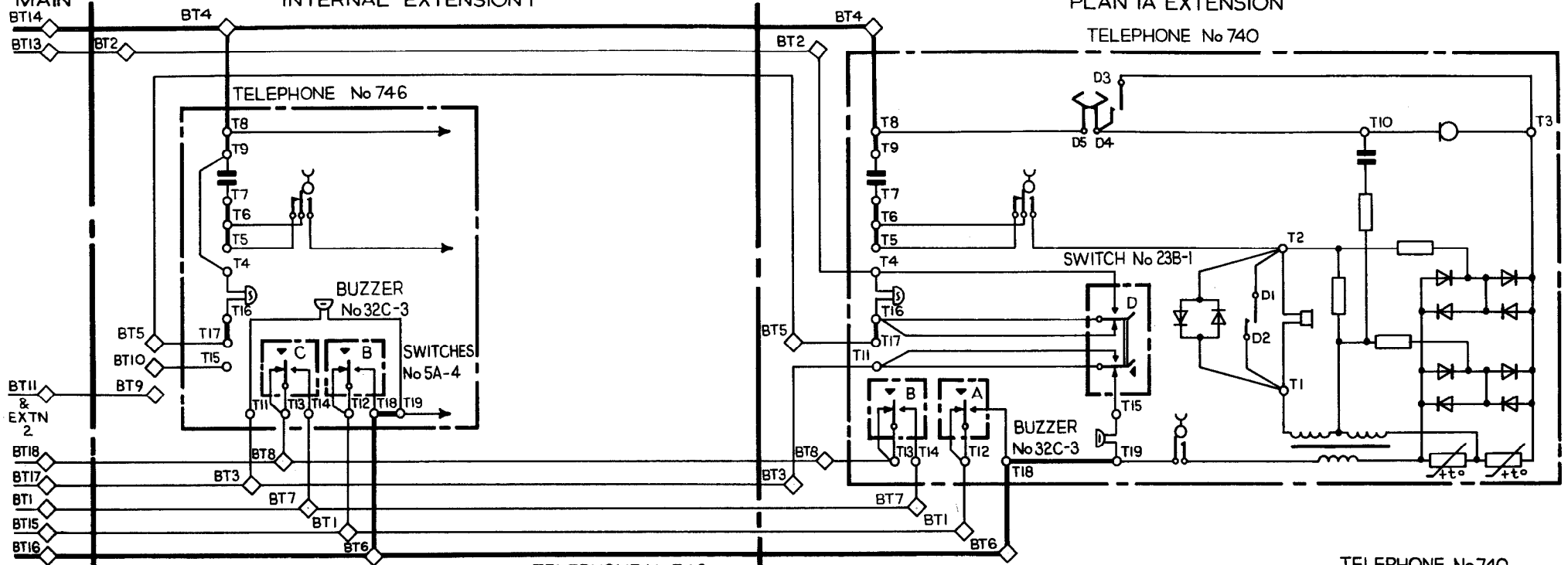


FIG. 3 EXTENSION PLAN IA ON EXTERNAL  
EXTENSION OF PLANS 107 & 107A

