

AUTOMATIC SYSTEMS
EXTENSION PLAN I (INTERNAL ONLY)
ON INTERNAL OR EXTERNAL EXTENSION OF PLANS 105, 105A, 107 AND 107A

N4517
PAGE 1-7
ISSUE B

NOTES:-

1. This diagram should be used in conjunction with Diagram N4507 or N4509.
2. See Diagram N4700 for add-on items when alternative telephones are used.
3. INTERNAL EXTENSION PLAN 107 OR 107A

APPARATUS REQUIRED FOR EXTENSION PLAN 1

Telephone No. 746
 2 Switches No. 5A-4
 Buzzer No. 32C-3
 Part 1/DBU/363
 Part 4/DBU/363
 2 Parts 1/DPL/1022
 2 Parts 1/DPI/203
 Cord, Instrument No. 9/21 AD...
 Block Terminal No. 36B

4. Fit Switches No. 5A-4 in Positions B and C of Telephone No. 746... Fit Part 4/DBU/363 (Main) and Part 1/DBU/363 in Positions B and C respectively. Fit Buzzer No. 32C-3. Rearrange straps. Fit Cord, Inst. No. 9/21 AD... and Block Terminal No. 36B, connect as extension of Plan 107 or 107A as shown on Fig. 1. The Telephone No. 746 recovered, with straps rearranged, is connected as Extension Plan 1. BT1 at Main should be extended on the W/G Conductor of the 8w cable to BT5 at the Extension.

5. **INTERNAL EXTENSION PLAN 105 OR 105A.**
APPARATUS REQUIRED FOR EXTENSION PLAN 1.

Telephone No. 740	At Extension 1 of Plan 105/105A
3 Switches No. 5A-4	Part 6/DBU/372
Buzzer No. 32C-3	At Extension 2 of Plan 105/105A
Part 3/DBU/372	Part 5/DBU/372
Part 4/DBU/372	
3 Parts 1/DPI/203	
Cord Inst. No. 9/21 AD	
Block Terminal No. 36B	

6. Fit Cord Inst. No. 9/21 AD and Block Terminal No. 36B. Fit Switches No. 5A-4 in positions A, C and D. Fit Parts 4/, and 3/DBU/372 in positions A & C respectively. At Extension 1 of Plan 105/105A fit Part 6/DBU/372 in position D, similarly at Extension 2 of Plan 105/105A fit Part 5/DBU/372. Adjust A, C & D latches to setting 3, X & Y latches to setting 5 (see Dgm. N848). Fit Buzzer No 32C-3. Rearrange straps and connect as Extension of Plan 105/105A as shown in Fig. 3. The Telephone recovered with straps rearranged is connected as Extension Plan 1.

7. EXTERNAL EXTENSION PLAN 107 OR 107A

APPARATUS REQUIRED FOR EXTENSION PLAN 1

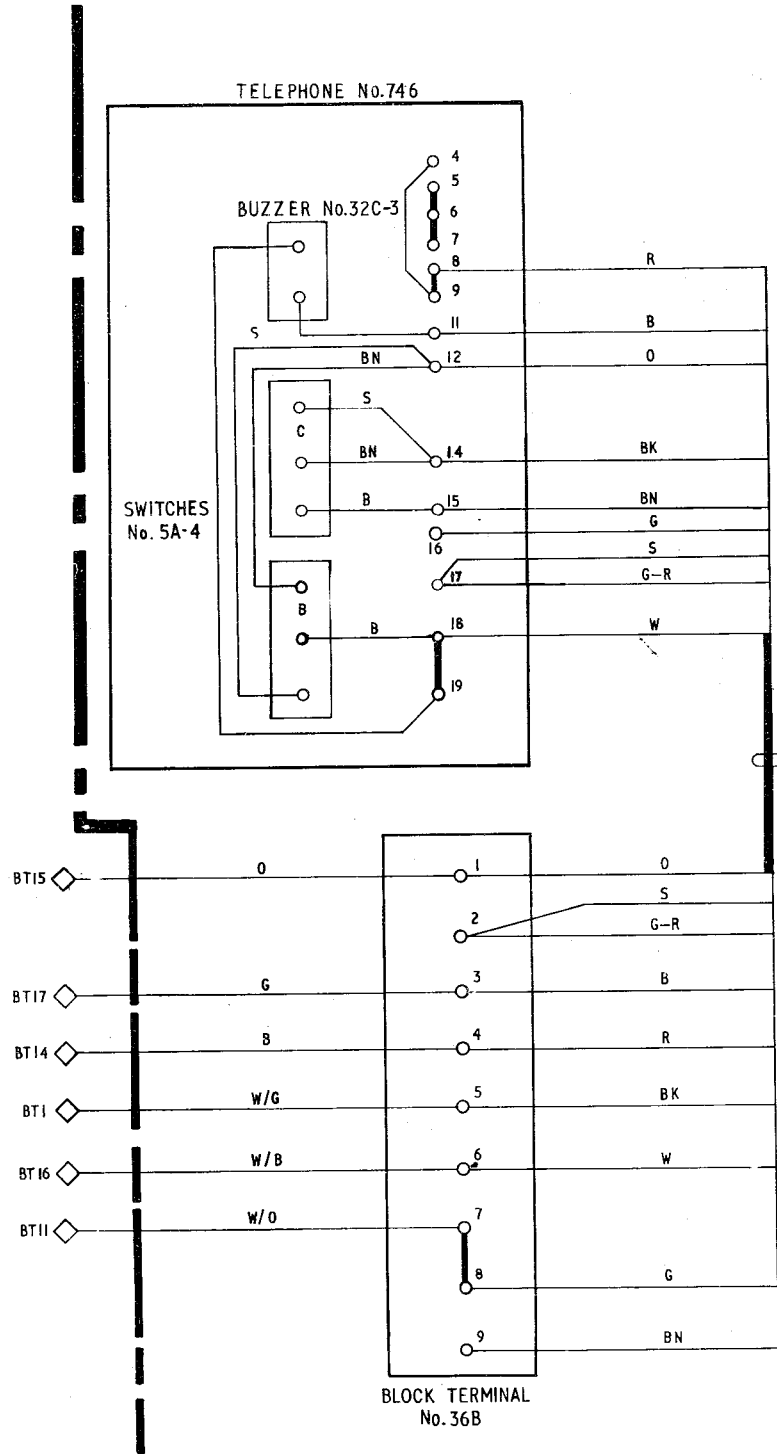
Telephone No. 746
 2 Switches No. 5A-4
 Switch No. 19B-1
 Part 4/DBU/363
 Part 1/DBU/363
 2 Parts 1/DPL/1022
 2 Parts 1/DPI/203
 Bell No. 56A
 3 Cells, Dry R40
 Box Battery No. 3
 2 Cords, Instrument No. 6/61AT
2 Blocks Terminal No. 35A

Assemble the apparatus as in note 4, fitting Switch No. 19B-1 in auxiliary gravity springset position. Fit Cord, Instrument No. 6/61AT and Block Terminal No. 35A. Rearrange straps. Connect as Extension Plan 107 as shown on Fig. 2 The Telephone No. 746 recovered, with straps rearranged and Cord, Instrument No. 6/61AT and Block Terminal No 35A fitted, is connected as Extension Plan 1.

8. EXTERNAL EXTENSION PLAN 105 OR 105A

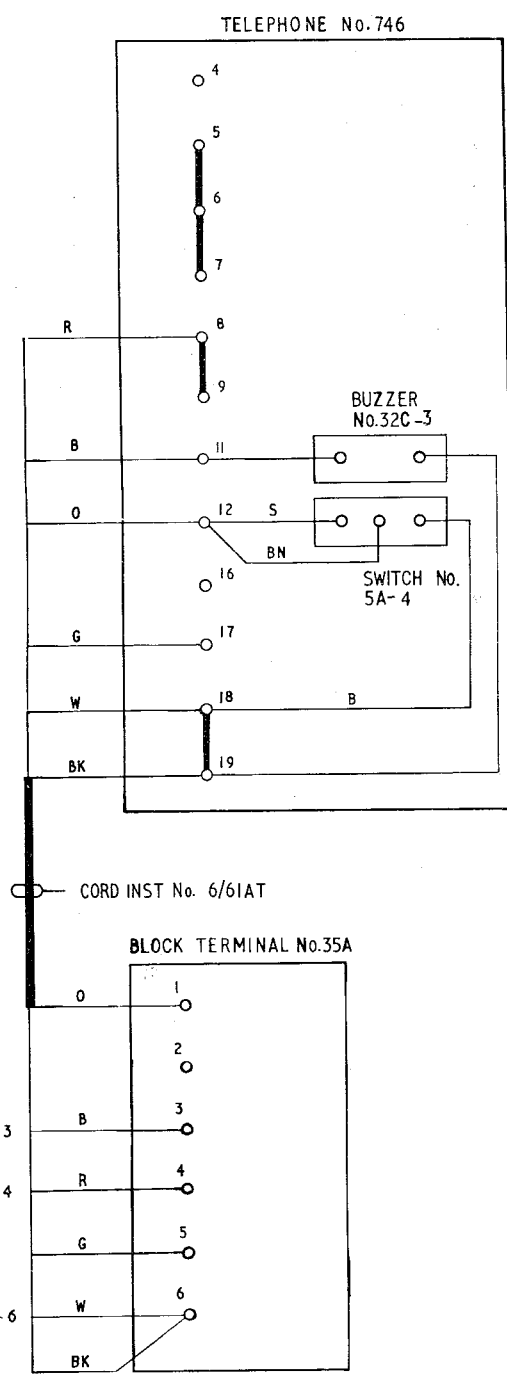
Provide apparatus and fit as in Note 7 but with a Thermistor No. 1A-1 connected in place of Strap T4-T5 at the Plan 105 Extension.

PO TELECOMMS HORS				
COLOUR:- W DISTN:- CB & AUTO	ISSUE	B	TELES CHANGED. NOTES REWRITTEN, FIG. 3 ADDED <i>D.I.F.</i> TD7.1.1	26-8-75
		A	NEW FORMAT. MINOR AMENDMENTS	15.3.66



CORD INST. No. 9/21AD

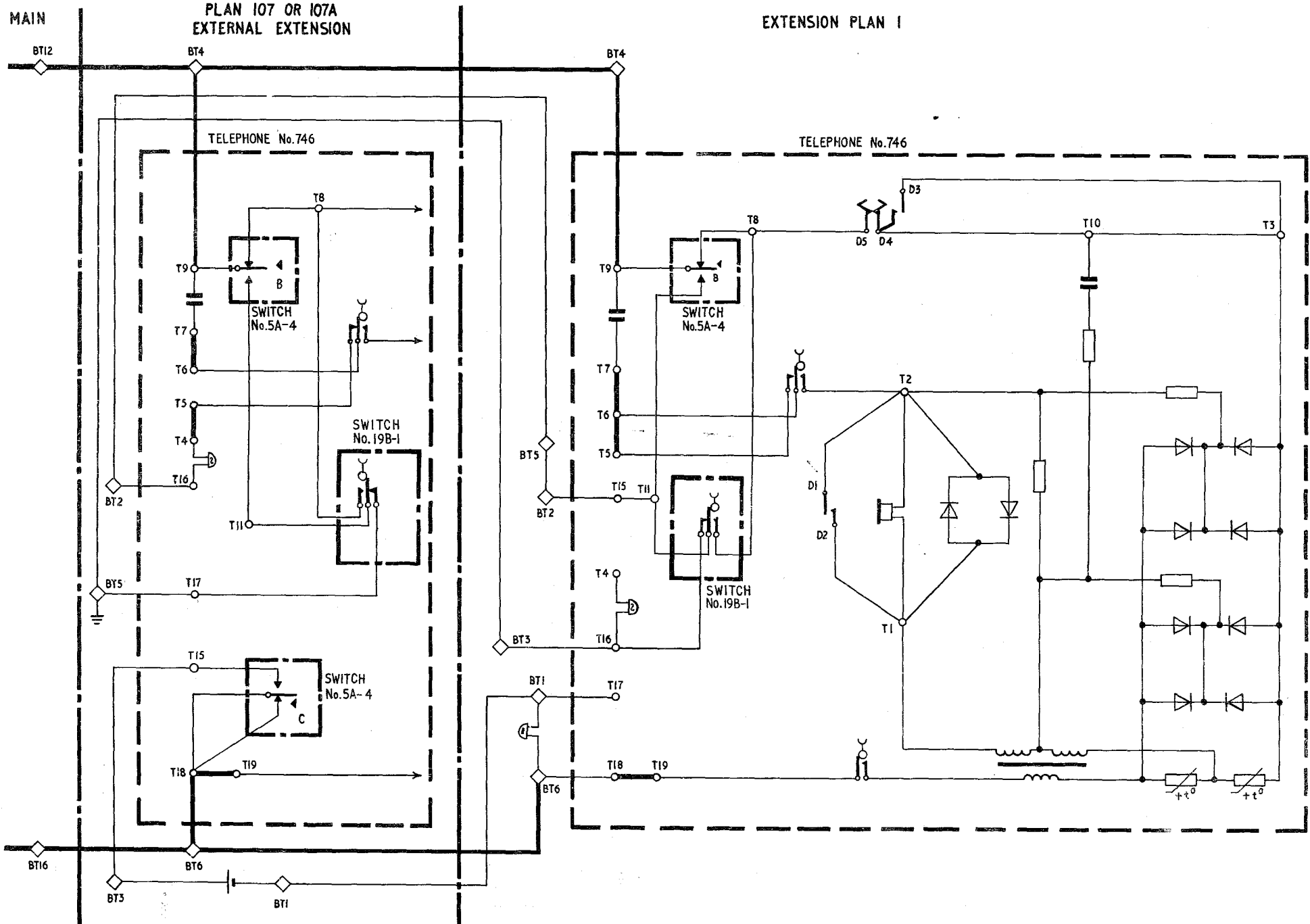
CABLE 4W



CORD INST No. 6/61AT

BLOCK TERMINAL No. 35A

FIG.2 EXTENSION PLAN I (INTERNAL ONLY)
ON EXTERNAL EXTENSION OF PLAN 107 OR 107A
EXPLANATORY



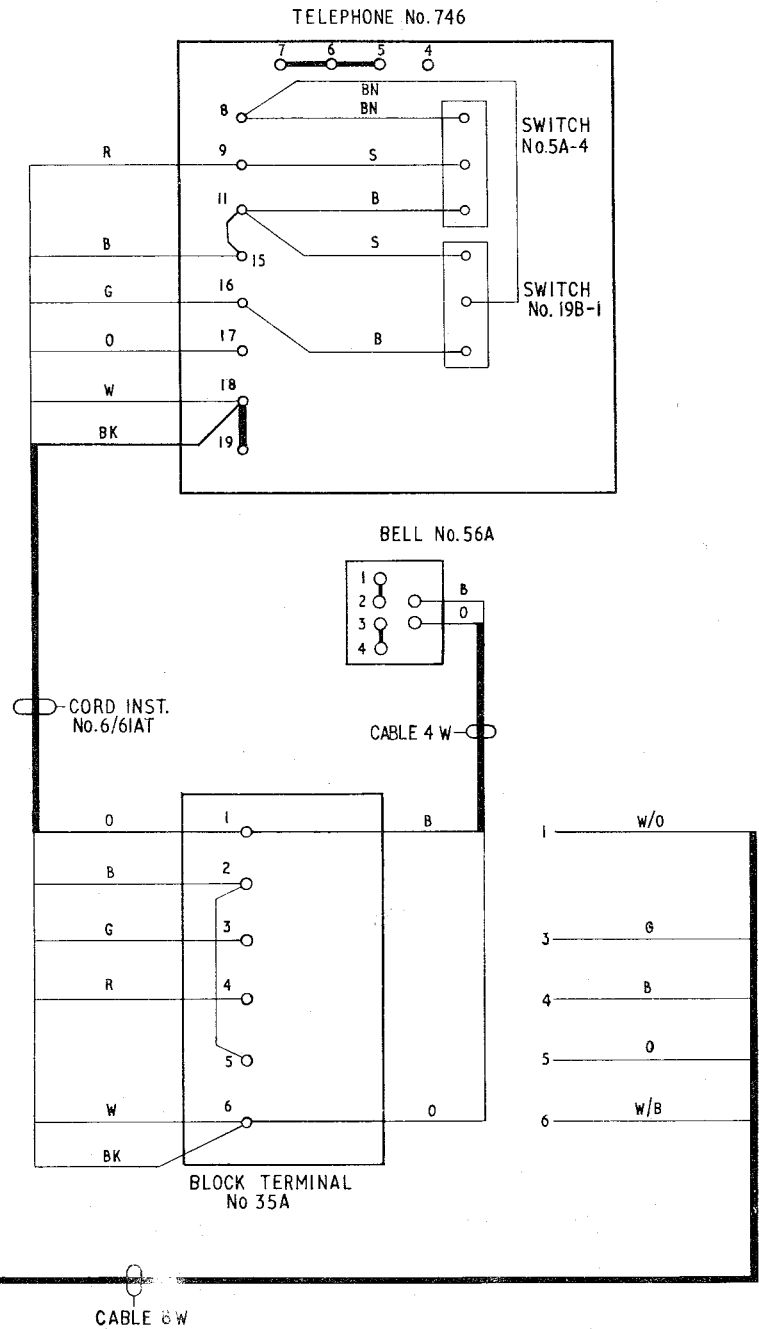
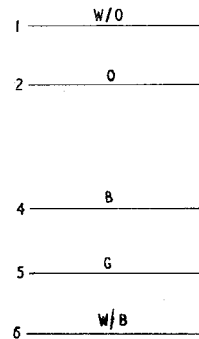
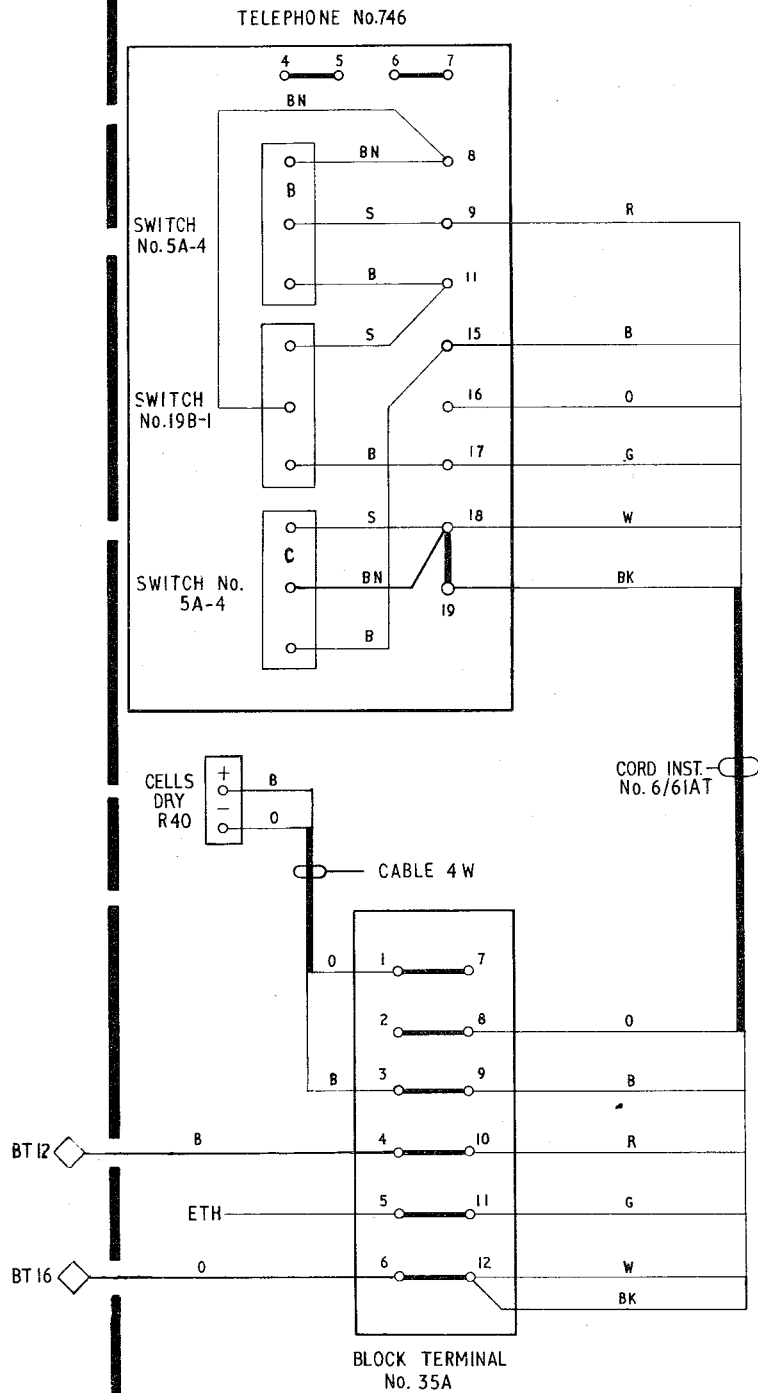
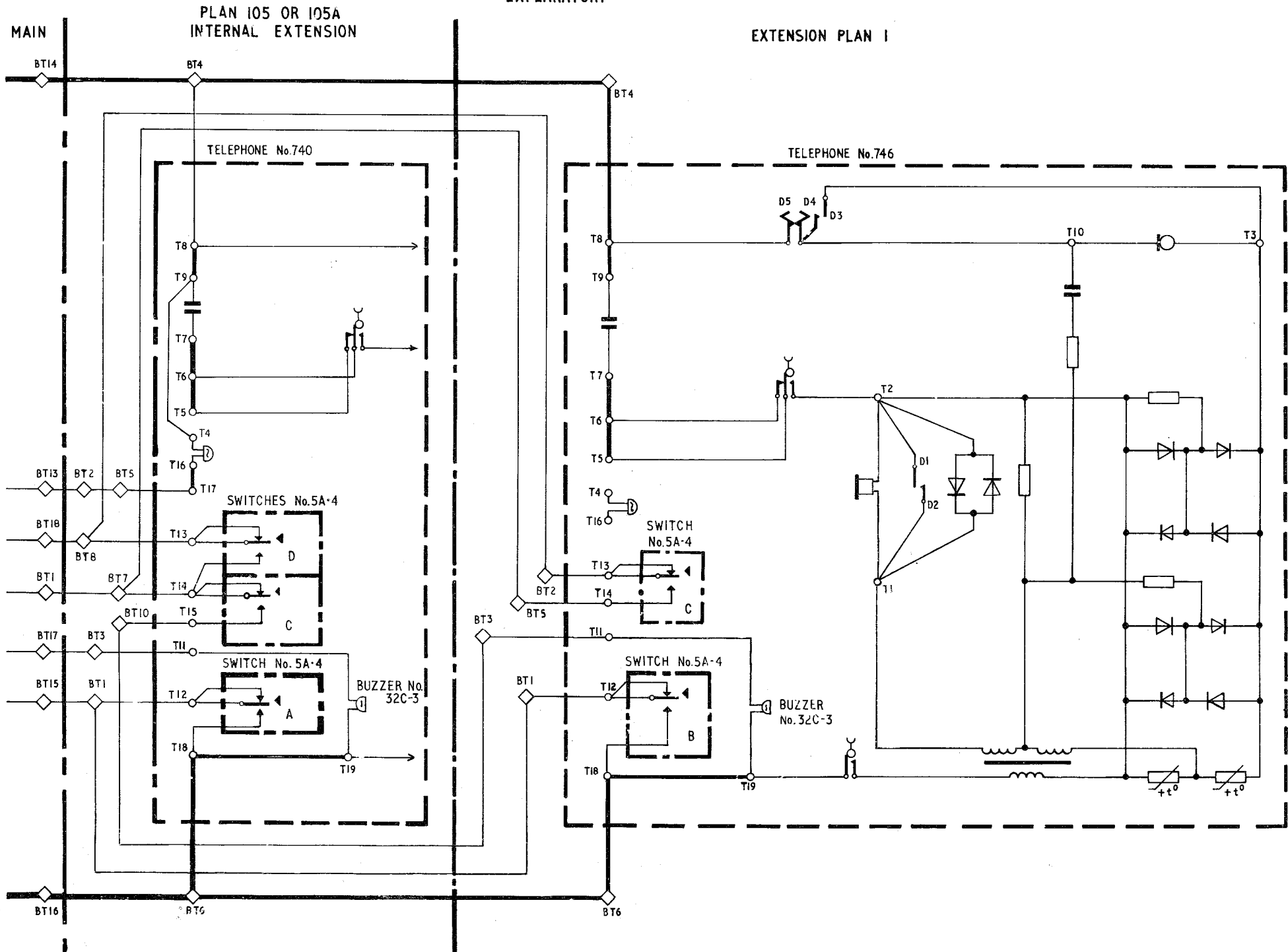


FIG 3 EXTENSION PLAN I (INTERNAL ONLY)
ON INTERNAL EXTENSION OF PLAN 105 OR 105A
EXPLANATORY



WIRING

MAIN PLAN

INTERNAL PLAN 105 OR 105A

EXTENSION PLAN I

