

# AUTOMATIC SYSTEMS

## EXTENSION PLAN 1A ON EXCHANGE LINE OF EXTENSION PLAN 105 (INTERNAL ONLY) AND EXTENSION PLAN 107 (INTERNAL & EXTERNAL)

**N4516**  
**PAGE 1-4**  
**ISSUE C**

**NOTES:-**

1. This diagram should be used in conjunction with Dgm. N4507 or N4509.
2. APPARATUS REQUIRED:-  
Telephone No. 746  
Switch No. 19B-1  
Switch No. 23A-1  
2 Parts 1/DBU/203  
Part 2/DBU/362  
Block Terminal No. 35A  
**Thermistor No. 1A-1 (Plan 107 with external extension)**
3. The total number of telephones on any combination or installation should not exceed six.
4. The exchange line may be connected at a Plan 1A Extension if more convenient.
5. When one Plan 1A Extension only is required, provide as for Last Extension.

**PLAN 105 OR 107 WITH INTERNAL EXTENSIONS (FIGS. 1 & 3)**

6. Recover Block Terminal No. 52A from Telephone No. 746 and provide Block Terminal No. 35A. Fit Switch No. 19B-1, Switch No. 23A-1 with Part 2/DBU/362. Rearrange straps and connect as shown. At Plan 105 or 107 Main, remove strap between terminals 6 and 7 in Planphone A, provide strap between terminals BT7 and BT19 in Block Terminal No. 37B.

**PLAN 107 WITH EXTERNAL EXTENSIONS (FIGS. 2 & 4)**

7. Recover Block Terminal No. 52A from Telephone No. 746 and provide Block Terminal No. 35A. Fit Switch No. 19B-1, Switch No. 23A-1 with Part 2/DBU/362. Rearrange straps and connect as shown. At Plan 107 Main, remove strap between terminals 7 and 8 in Planphone A and provide a strap between terminals 4 and 5. In Block Terminal No. 37B, shift earth from terminal BT7 to BT5, strap

terminals BT7 and BT19. At Plan 107 External Extension, remove strap between telephone terminals T4 and T5 and connect Thermistor No. 1A-1.

8. Incoming exchange calls will ring the bell in the Main telephone for all switching conditions of the Plan 107. If the buzzer is not required to operate as well then disconnect the diode connected between terminals 4 and 5 in the Converter Ringing No. 9A by transferring the diode spade tag to the same terminal as the ring tag.

**EXTENSION BELLS**

9. If an extension bell is required at an Extension of the Plan 1A, remove strap between terminals BT2 and BT3 in Block Terminal No. 35A and connect bell. If an extension bell is required at the Main of the Plan 105 or 107, remove the strap between terminals BT7 and BT19 in Block Terminal No. 37B and connect bell.
10. See Dgm. N4700 for add-on items when alternative telephones are used.

PD TELECOMMS HCRS PAPER:- W DISTR:- CB & AUTO	ISSUE		
	C	TELES CHANGED. NOTES REWRITTEN. PAGE 4 SHOWING WIRING ADDED. D.S.F. 197.1.1	11-7-75
	B	NEW FORMAT. RECTIFIER ELEMENT NO. 205 ADDED. NOTE 7 REWRITTEN AS NOTES 8 & 9 D.A.L.	15.3.66

FIG. 1  
PLAN IA ON EXCHANGE LINE OF PLANS 105 OR 107 WITH INTERNAL EXTENSIONS

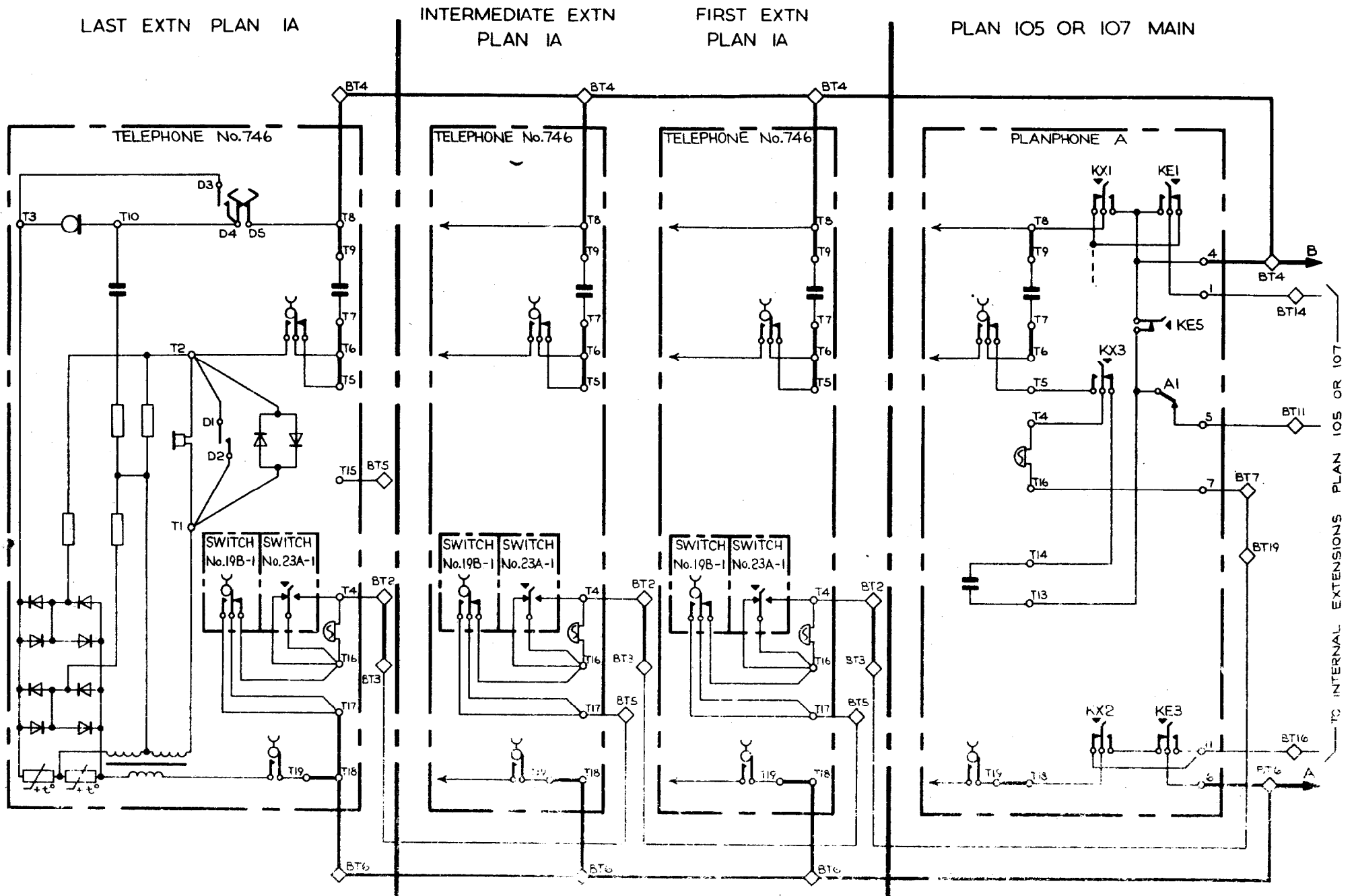


FIG. 2  
 PLAN IA ON EXCHANGE LINE OF PLAN 107 WITH EXTERNAL EXTENSION

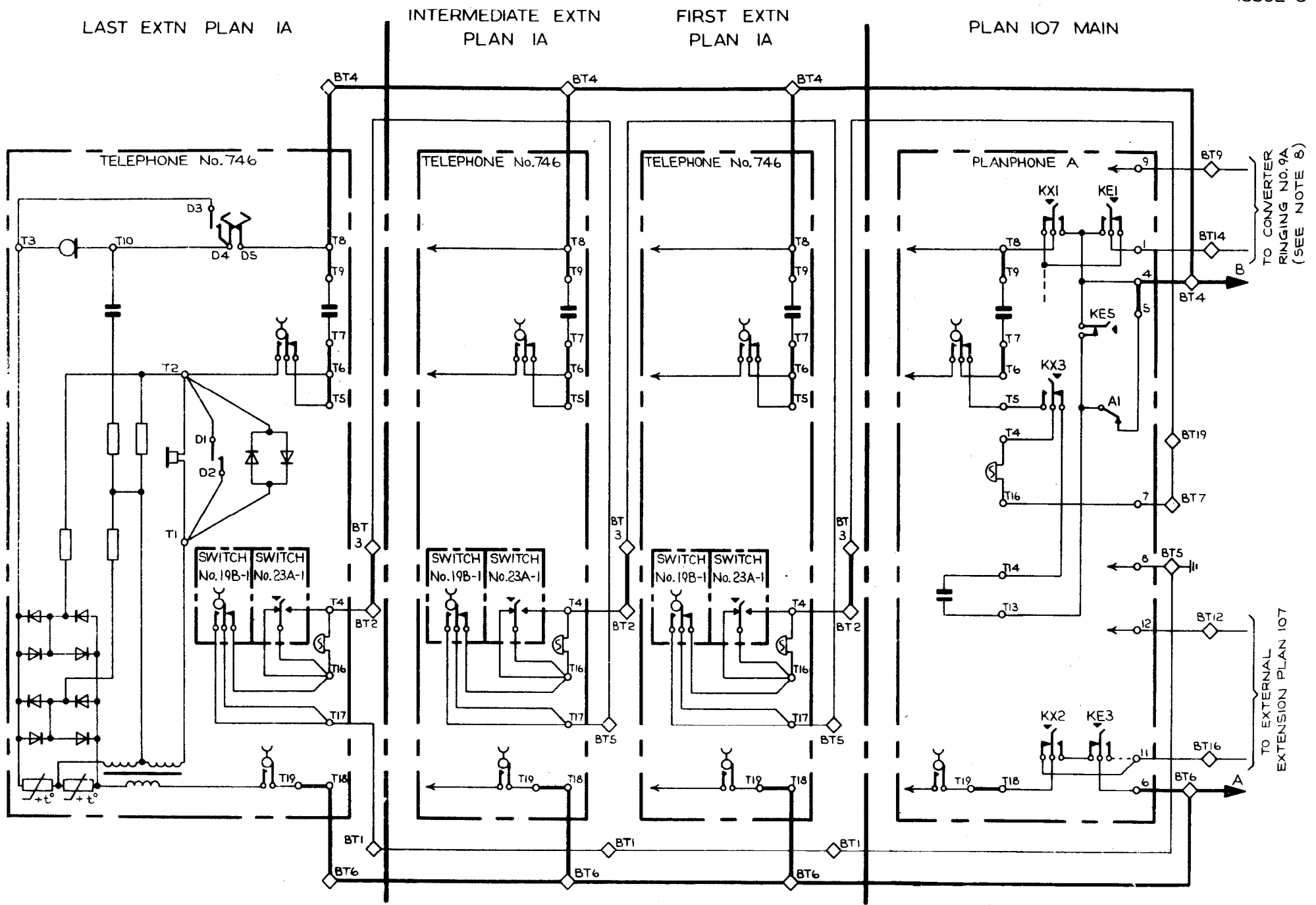


FIG. 3

PLAN IA ON EXCHANGE LINE OF PLANS 105 OR 107 WITH INTERNAL EXTENSIONS

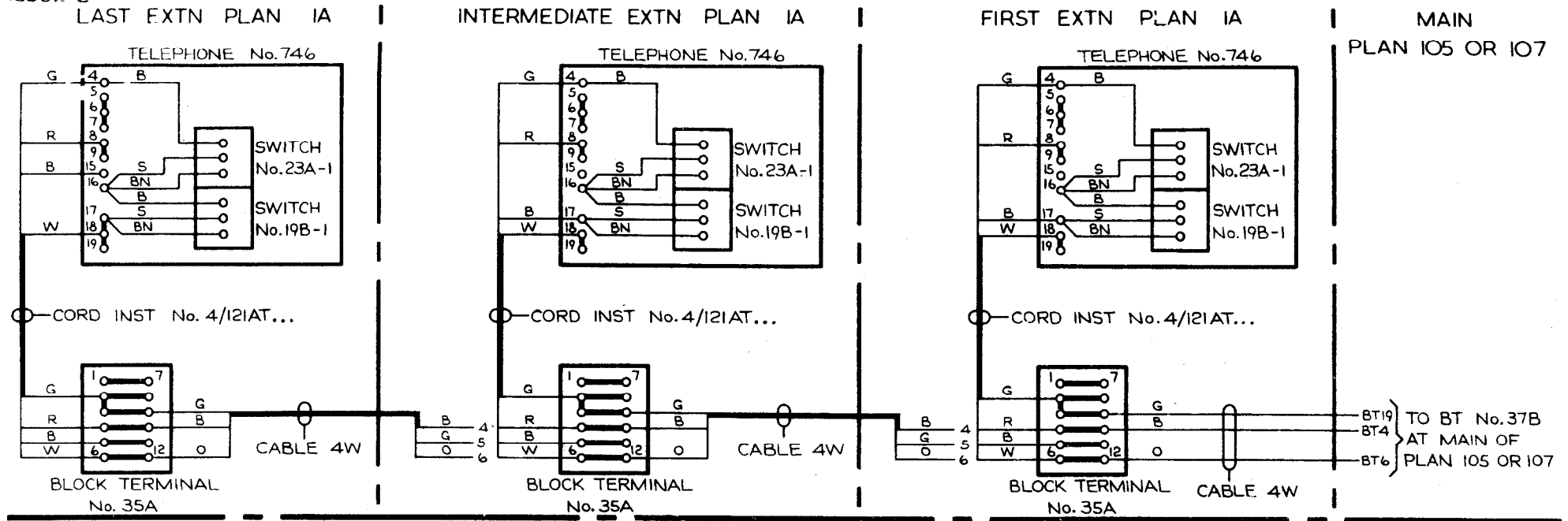


FIG. 4

PLAN IA ON EXCHANGE LINE OF PLAN 107 WITH EXTERNAL EXTENSION

